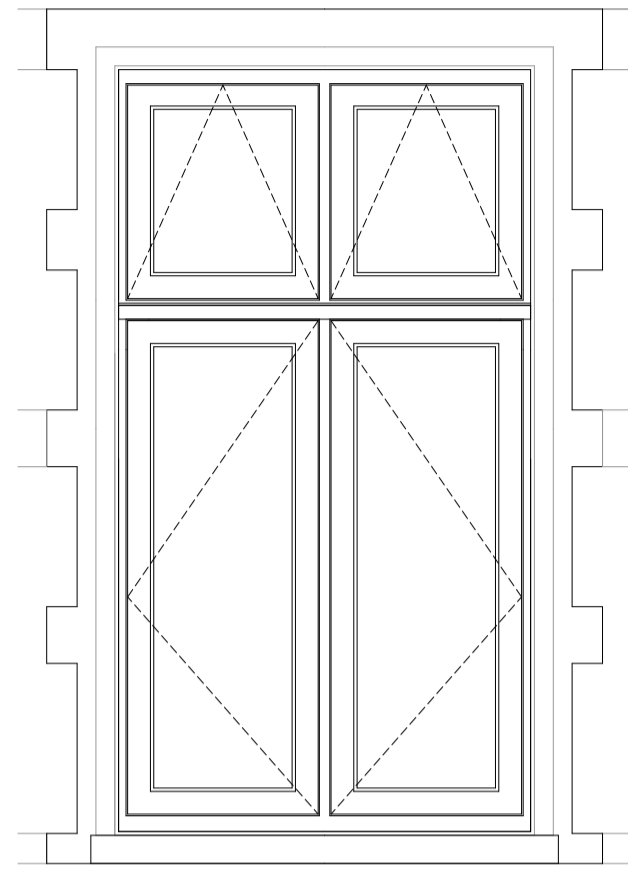
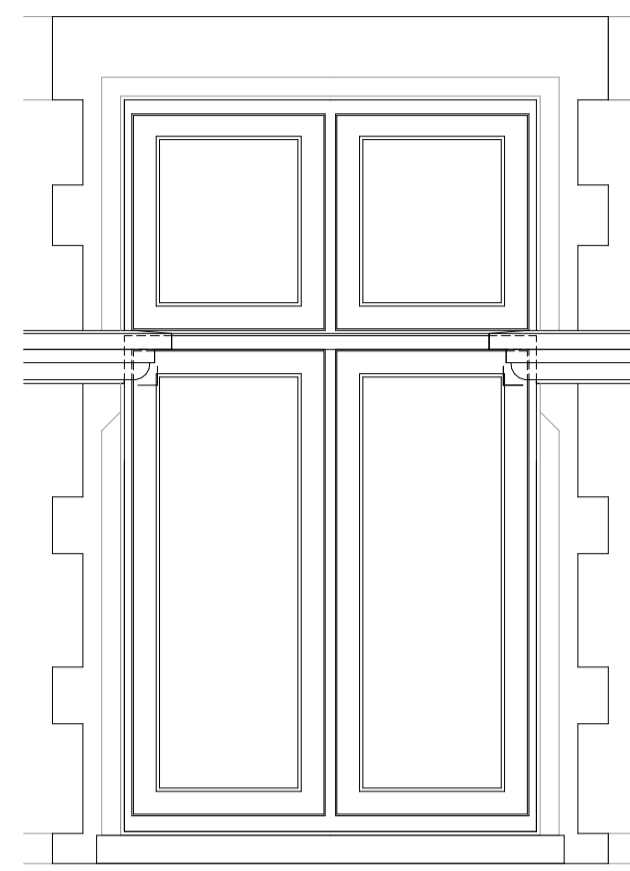


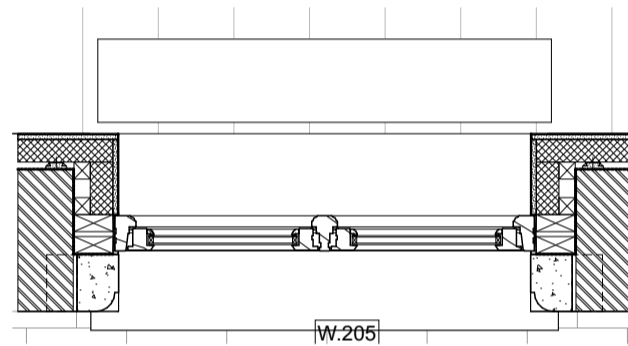
01 - Traditional casement window - section
Scale 1:20 @A1



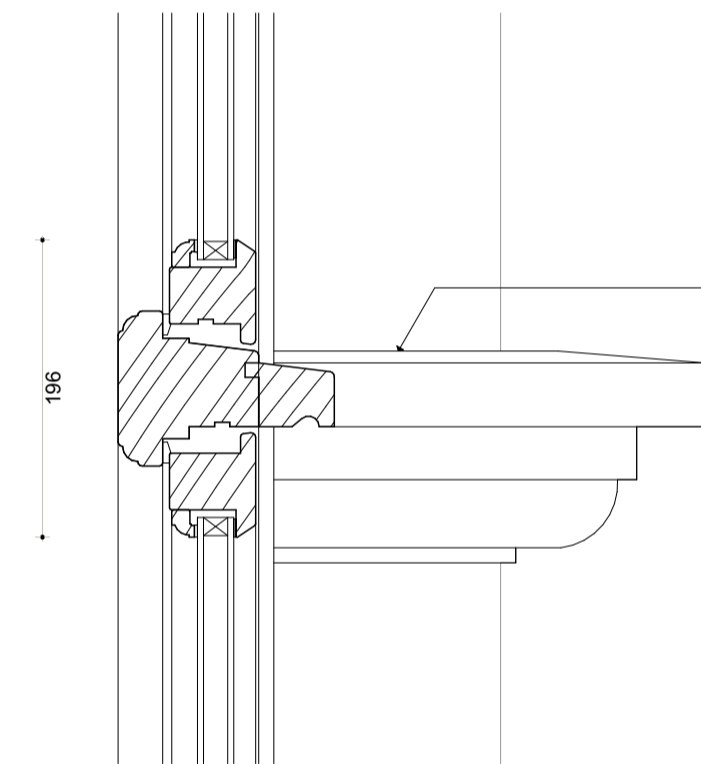
02 - Traditional casement window - elevation
Scale 1:20 @A1



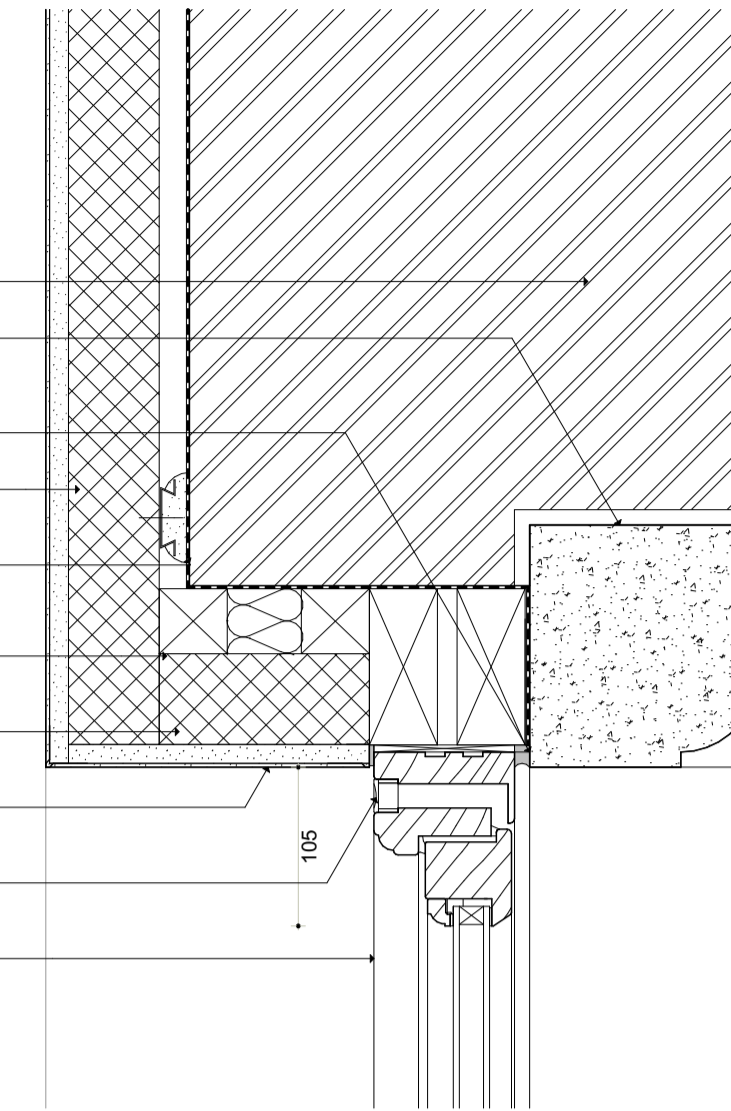
06 - Traditional casement window 02 - elevation
Scale 1:20 @A1



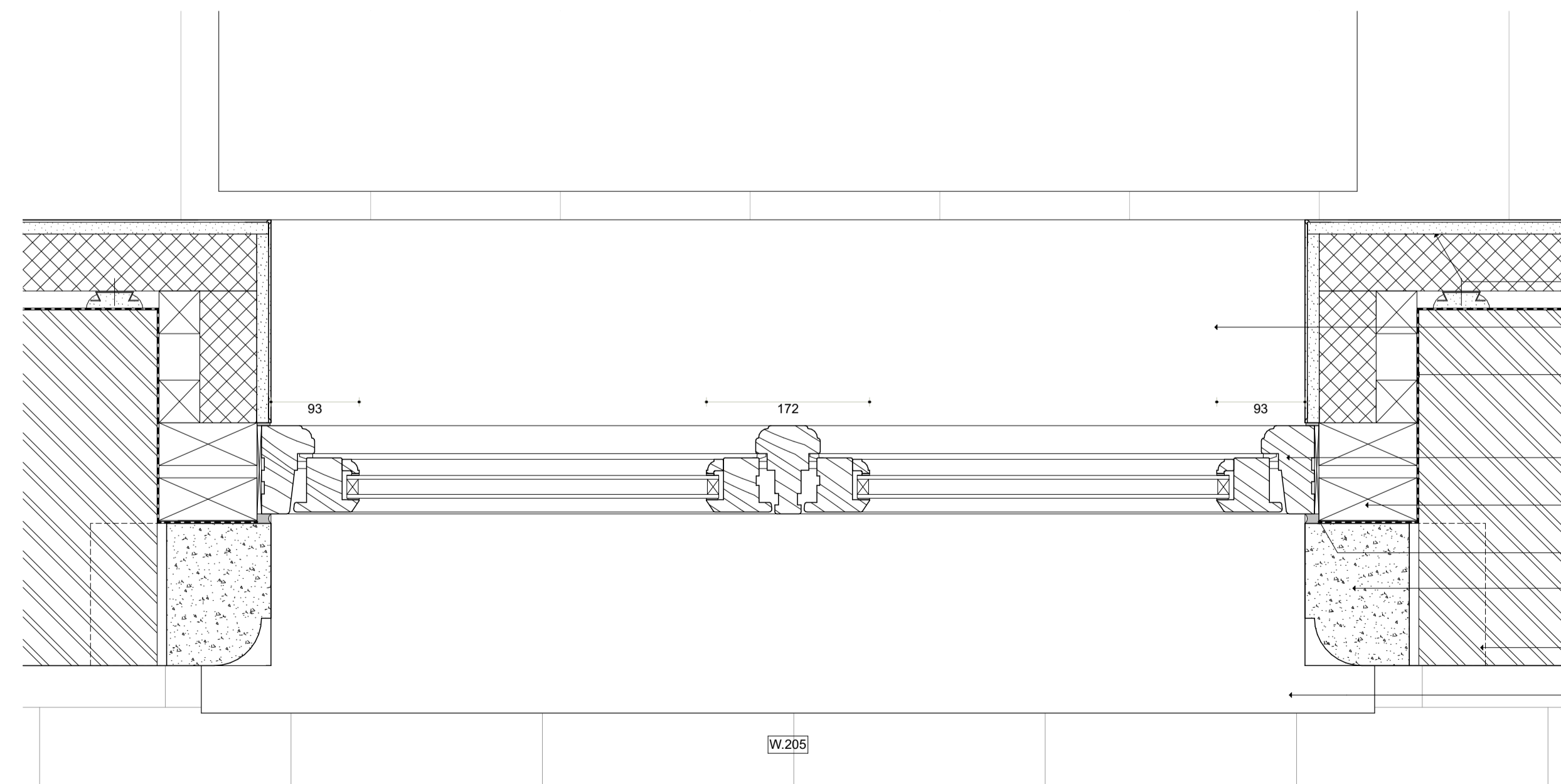
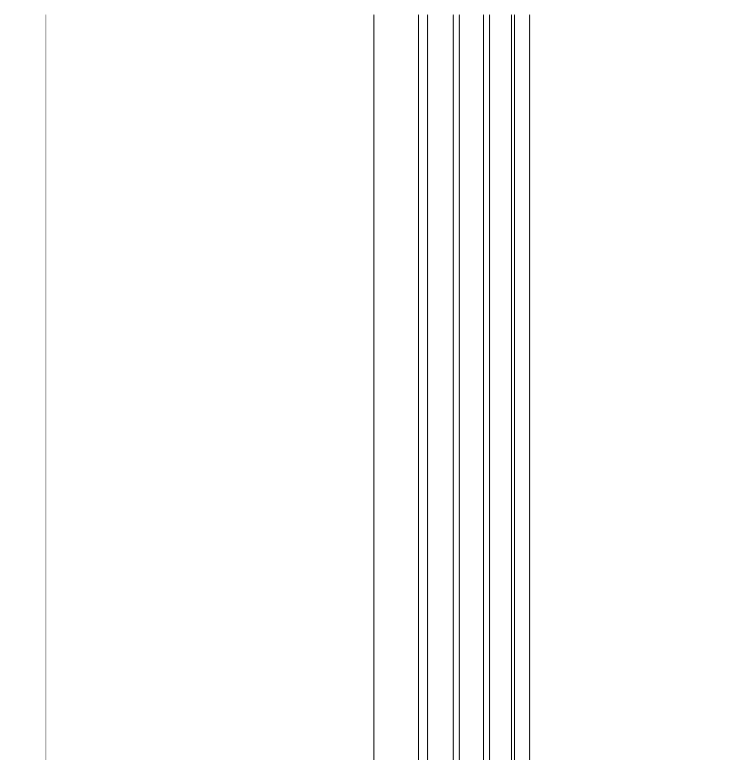
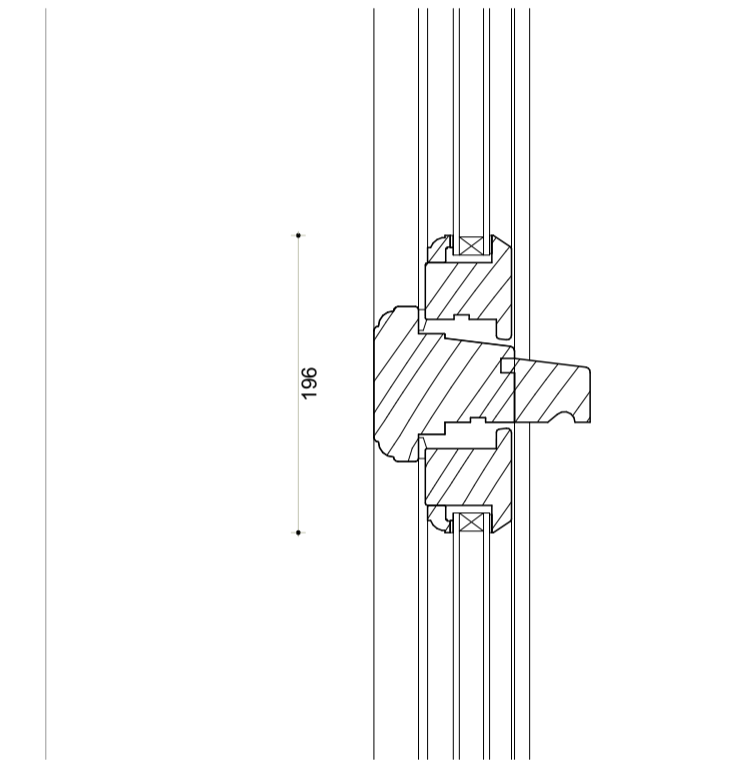
03 - Traditional casement window - plan
Scale 1:20 @A1



07 - Traditional casement window 02 - section detail
Scale 1:50 @A1



- Existing masonry wall
- Existing pre-cast concrete window lintel. Refurbished and white painted finish.
- Compressible seal
- 78mm PIR on metal furring system (K10-175A)
- DPM forming continuous waterproof layer to internal face of masonry wall
- Treated SW subframe and packers (G20-720)
- Rigid insulation
- Plaster skim with painted finish
- Concealed trickle vent to manufacturer's details.
- Timber framed casement window. Refer to schedule.



04 - Traditional casement window - plan detail
Scale 1:5 @A1

- 78mm PIR on metal furring system (K10-175A)
- Painted MDF window cill
- DPM forming continuous waterproof layer to internal face of masonry wall
- Timber framed casement window. Refer to schedule.
- Treated SW subframe and packers (G20-720)
- Compressible seal
- Existing pre-cast concrete window reveal. Refurbished and white painted finish.
- Existing masonry wall
- Existing concrete window cill. Refurbished and white painted finish.

- Existing pre-cast concrete window reveal. Refurbished and white painted finish.
- Timber framed casement window. Refer to schedule.
- Existing concrete window cill. Refurbished and white painted finish.
- Painted MDF window cill
- DPM forming continuous waterproof layer.
- Treated SW subframe and packers (G20-720)
- Mineral wool insulation
- 78mm PIR on metal furring system (K10-175A)
- DPM forming continuous waterproof layer to internal face of masonry wall
- Existing masonry wall

05 - Traditional casement window - foot / head / transom detail
Scale 1:5 @A1

Revision	Date	Description	Drawn	Check

PINZAUER

44 GREAT RUSSELL STREET
LONDON WC1B 3PA
WWW.PINZAUER.COM

Project
21 Maresfield Gardens

Project number
002

Client
Eli and Aliza Pine

Drawing name
External details - traditional double casement window

Drawing number
514

Date 27/08/2020
Scale / Format 1:20, 1:5 at A1 /
Drawn / Checked RC / ANW
Approved GB
CAD Reference 002_84_500.pln

Issue 00
Stage 4 for costing
DRAFT

