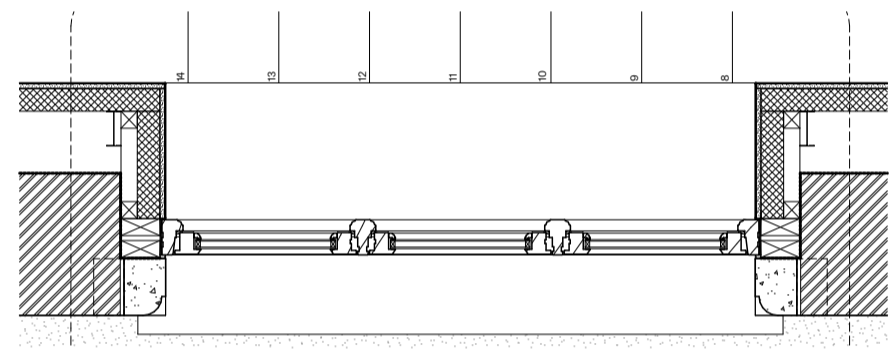
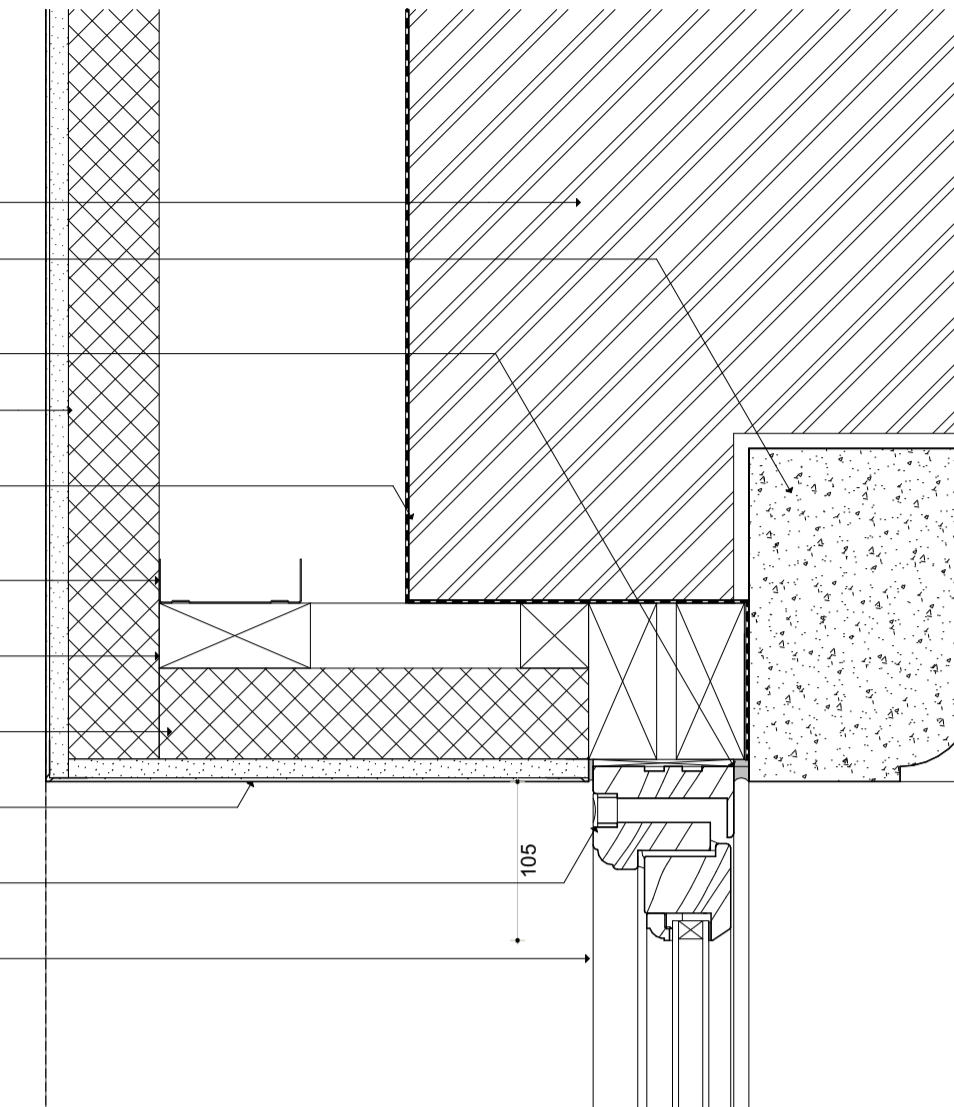


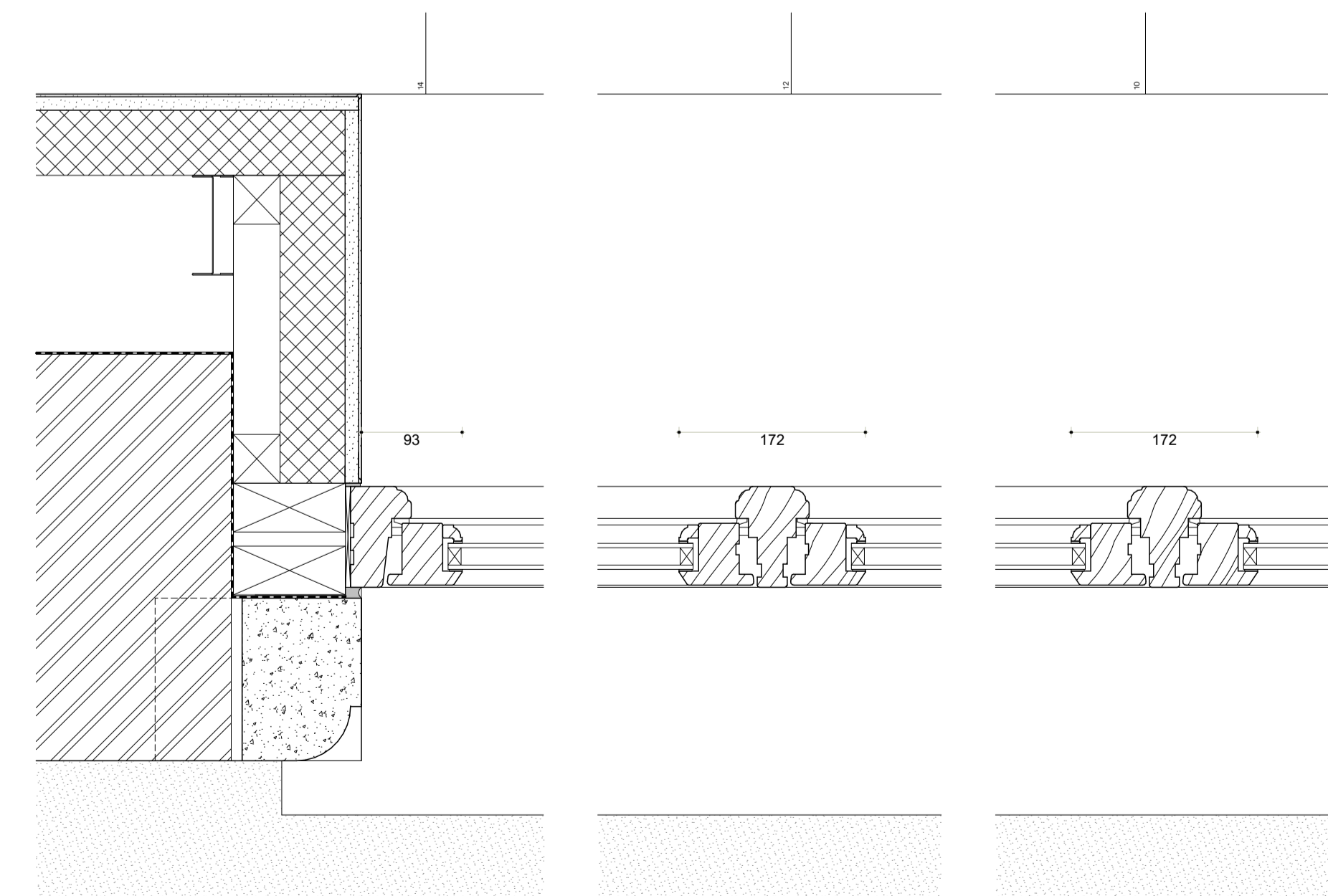
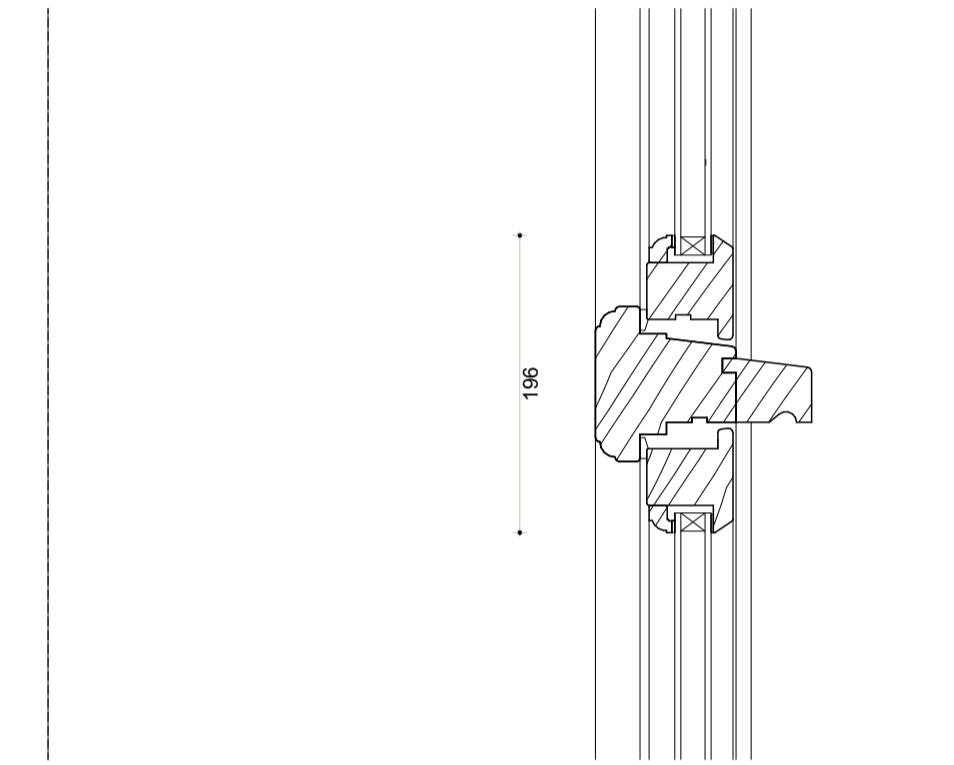
01 - Traditional casement window - section
Scale 1:20 @A1

02 - Traditional casement window - elevation
Scale 1:20 @A1

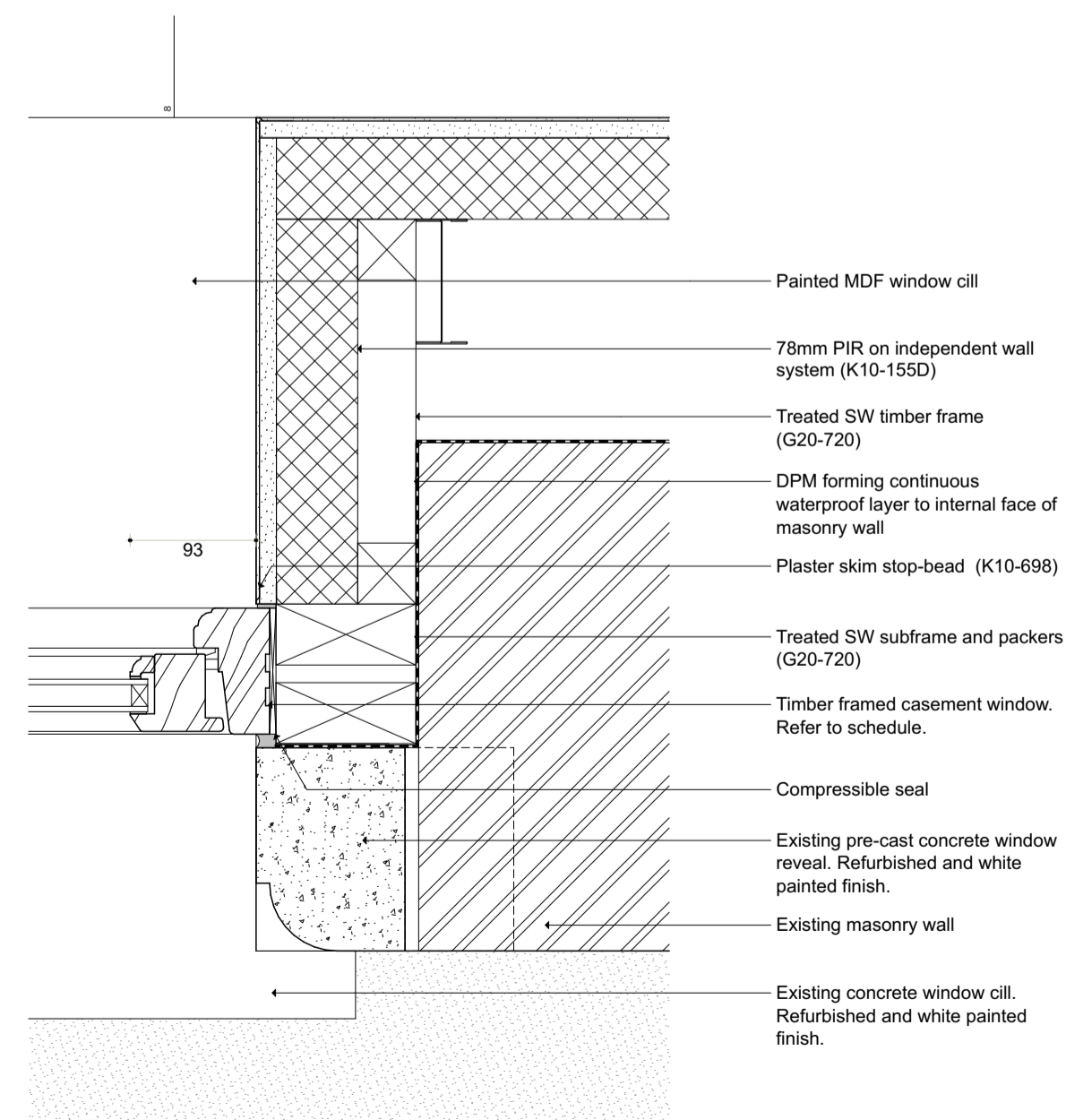
- Existing masonry wall
- Existing pre-cast concrete window lintel. Refurbished and white painted finish.
- Compressible seal
- 78mm PIR on independent wall system (K10-155D)
- DPM forming continuous waterproof layer to internal face of masonry wall
- IWL base channel (K10-155D)
- Treated SW subframe and packers (G20-720)
- Rigid insulation
- Plaster skim with painted finish
- Concealed trickle vent to manufacturer's details.
- Timber framed casement window. Refer to schedule.



03 - Traditional casement window - plan
Scale 1:20 @A1

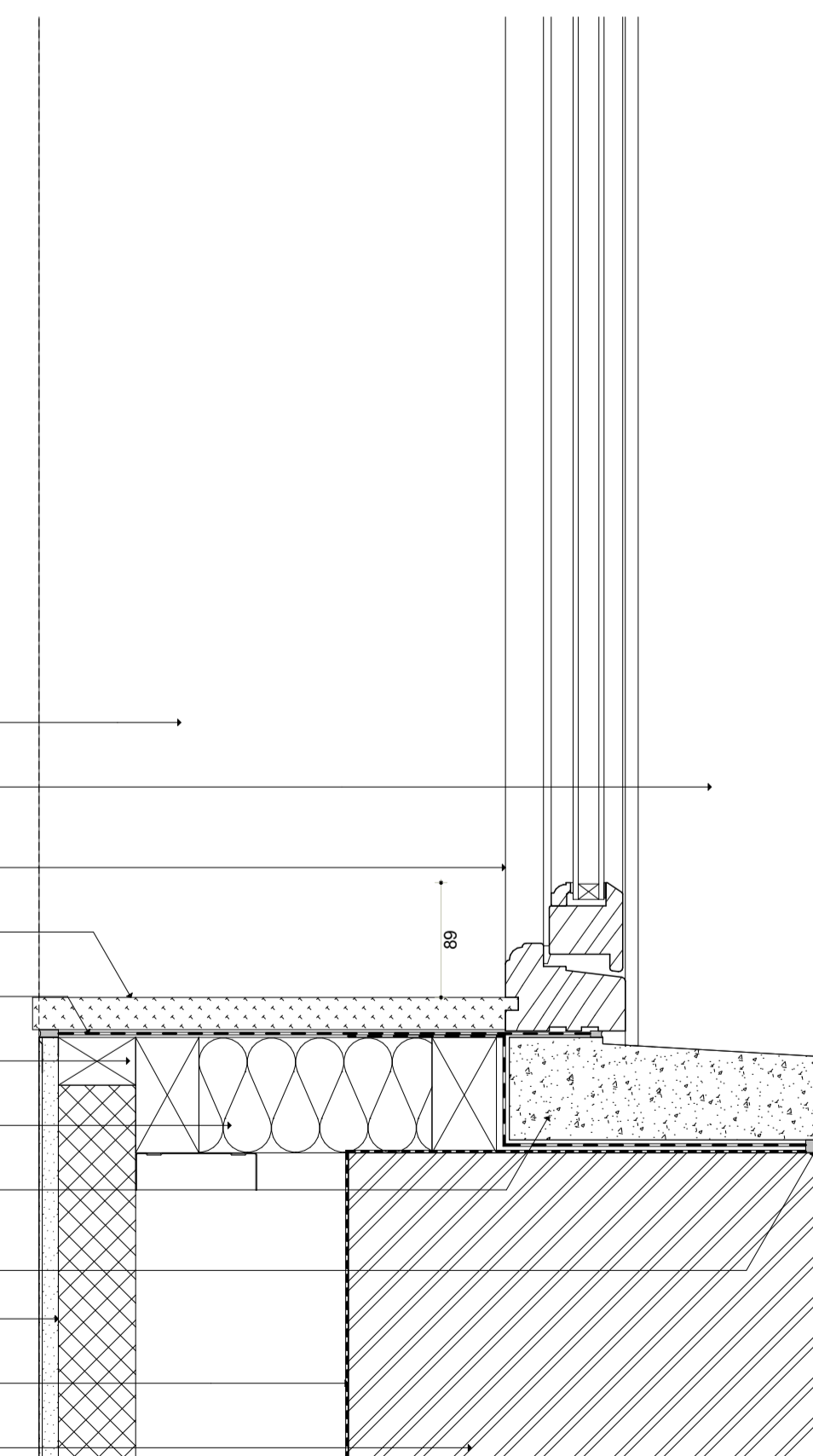


04 - Traditional casement window - plan detail
Scale 1:5 @A1



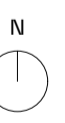
- Painted MDF window cill
- 78mm PIR on independent wall system (K10-155D)
- Treated SW timber frame (G20-720)
- DPM forming continuous waterproof layer to internal face of masonry wall
- Plaster skim stop-bead (K10-698)
- Treated SW subframe and packers (G20-720)
- Timber framed casement window. Refer to schedule.
- Compressible seal
- Existing pre-cast concrete window reveal. Refurbished and white painted finish.
- Existing masonry wall
- Existing concrete window cill. Refurbished and white painted finish.

- Plaster skim painted finish
- Existing pre-cast concrete window reveal. Refurbished and white painted finish.
- Timber framed casement window. Refer to schedule.
- Painted MDF window cill
- DPM forming continuous waterproof layer.
- Treated SW subframe and packers (G20-720)
- Mineral wool insulation
- Existing concrete window cill. Refurbished and white painted finish.
- Compressible seal
- 78mm PIR on independent wall system (K10-155D)
- DPM forming continuous waterproof layer to internal face of masonry wall
- Existing masonry wall



05 - Traditional casement window - foot / head / transom detail
Scale 1:5 @A1

Revision	Date	Description	Drawn	Check



PINZAUER

44 GREAT RUSSELL STREET
LONDON WC1B 3PA
WWW.PINZAUER.COM

Project: 21 Maresfield Gardens
Client: Eli and Aliza Pine
Project number: 002

Drawing name: External details - traditional casement window
Drawing number: 513

Date	27/08/2020	Issue	00
Scale / Format	1:5, 1:20 at A1 /	Stage 4 for costing	DRAFT
Drawn / Checked	RC / ANW		
Approved	GB		
CAD Reference	002_84_500.pln		