

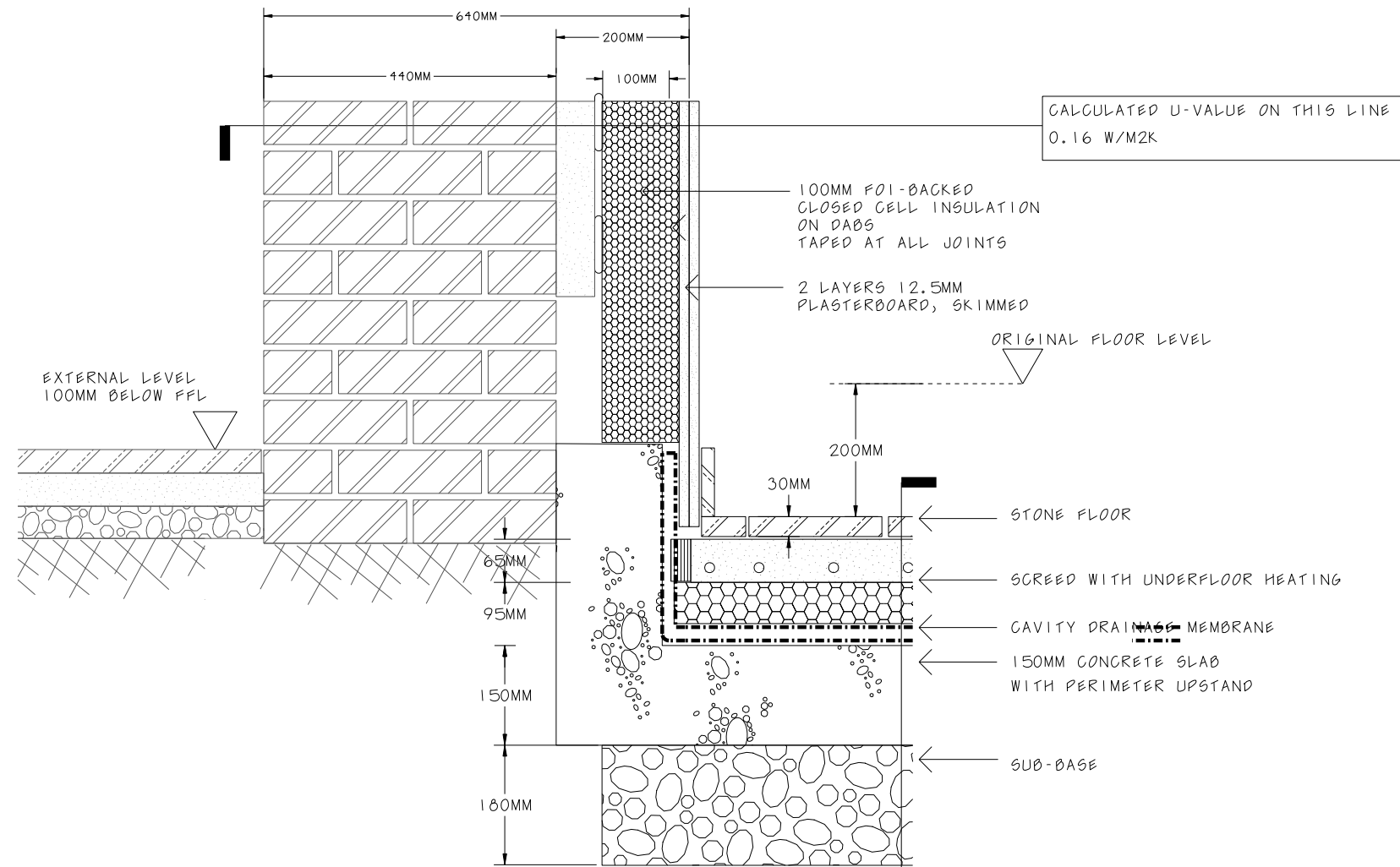
CALCULATED U-VALUE ON THIS LINE
0.98 W/M2K
TARGET U-VALUE RENOVATION
0.3 W/M2K
TARGET U-VALUE NEW FLOOR
0.15 W/M2K

EXTERNAL LEVEL
100MM BELOW FFL

TILED FLOOR
CONCRETE SLAB 80MM
NO SUB-BASE

Existing section

CALCULATED U-VALUE ON THIS LINE
2.06 W/M2K
TARGET U-VALUE RENOVATION
0.22 W/M2K
TARGET U-VALUE NEW FLOOR
0.13 W/M2K



CALCULATED U-VALUE ON THIS LINE
0.16 W/M2K

100MM FOI-BACKED
CLOSED CELL INSULATION
ON DABS
TAPED AT ALL JOINTS
2 LAYERS 12.5MM
PLASTERBOARD, SKIMMED

ORIGINAL FLOOR LEVEL

EXTERNAL LEVEL
100MM BELOW FFL

STONE FLOOR
SCREED WITH UNDERFLOOR HEATING
CAVITY DRAINAGE MEMBRANE
150MM CONCRETE SLAB
WITH PERIMETER UPSTAND
SUB-BASE

Proposed section

CALCULATED U-VALUE ON THIS LINE
0.31 W/M2K

REVISIONS

A 29/11/21 FLOOR BUILD UP AMENDED TO ACCOMMODATE
FOUNDATION DEPTH FOLLOWING TRIAL PIT

**Duncan Woodburn RIBA
Architect**

Second floor studio, 28 Poland Street,
London W1F 8QP
Tel. 0207 637 3819
Mob. 07956 661 426

**5 Elm row
200a Detailed section 1
Basement**

September 2021
1:20 @A1 1:10 @A3