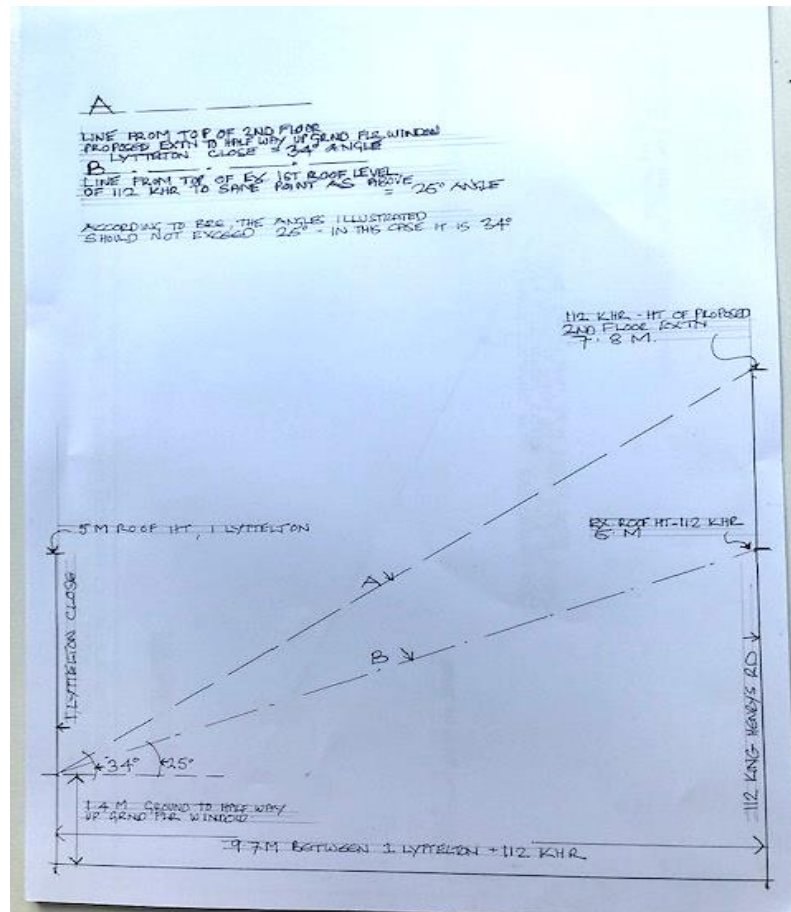


Some time ago ,proposals were drawn up for roof extensions to 1,2,3 Lyttelton Close - these are still in the planning stage ( No 1 is not proceeding at this time ) A daylight sunlight report was prepared. Using the BRE guidelines where a line from the top of the roof extn to half way the ground floor window on the opposite side of the close ( Houses 4 and 5 ) must not exceed 25 Degrees - due to the width of the close at this point 14.5 metres , this angle has been maintained and not exceeded. The drawing below which relates to the proposed roof extension by 112 shows this angle is 34 degrees because the width of the close at this position ( between 112 and 1 LC ) is 9.7 metres ( see page 3 )



This is the drawing showing that the BRE 25% rule is not maintained and increases to 34%



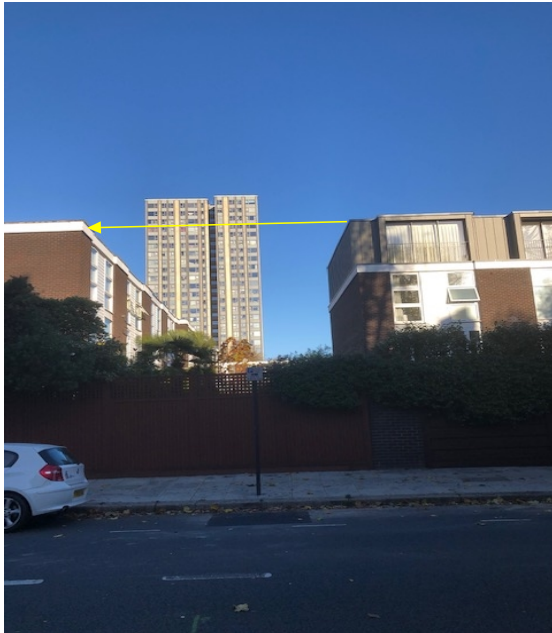
**views of the 9 x 4th floor extensions in KHR between Lower Merton Rise and Elsworthy Rise**

These illustrate the consistency of roof line along the development and also by changing the design of the extensions, minimise the impression of mass and overbearing were the brown brickwork have been continued up. The proposed 2nd floor extn on 112 would break the consistent height line on all the houses between Mariott Hotel and Lower Merton Rise and stand out on its own



4

These photographs show the the height digfference between the 4th floor extensions and the existing 3 floor houses each end of the 9 houses is apparently minimal whereas the difference between the proposed 2nd floor extension of 112 and 1,LC is over 3 metres and given that it is proposed to carry up the white painted brickwork as opposed to lightening the design of the 2nd floor extension, this will be overpowering. The architecture of the houses on Hawtrey Rd Estate already leaves a lot to be desired , having a ' bunker' appearance so the last thing we need is a larger bunker.



Here again the difference in height between the 3 storey houses and the 4 storey ones appears to be minimal , even though it clearly has to be of a habitable height for use Compare height difference to that between 112 KHR and 1 LC ( see red arrow on other sheet)