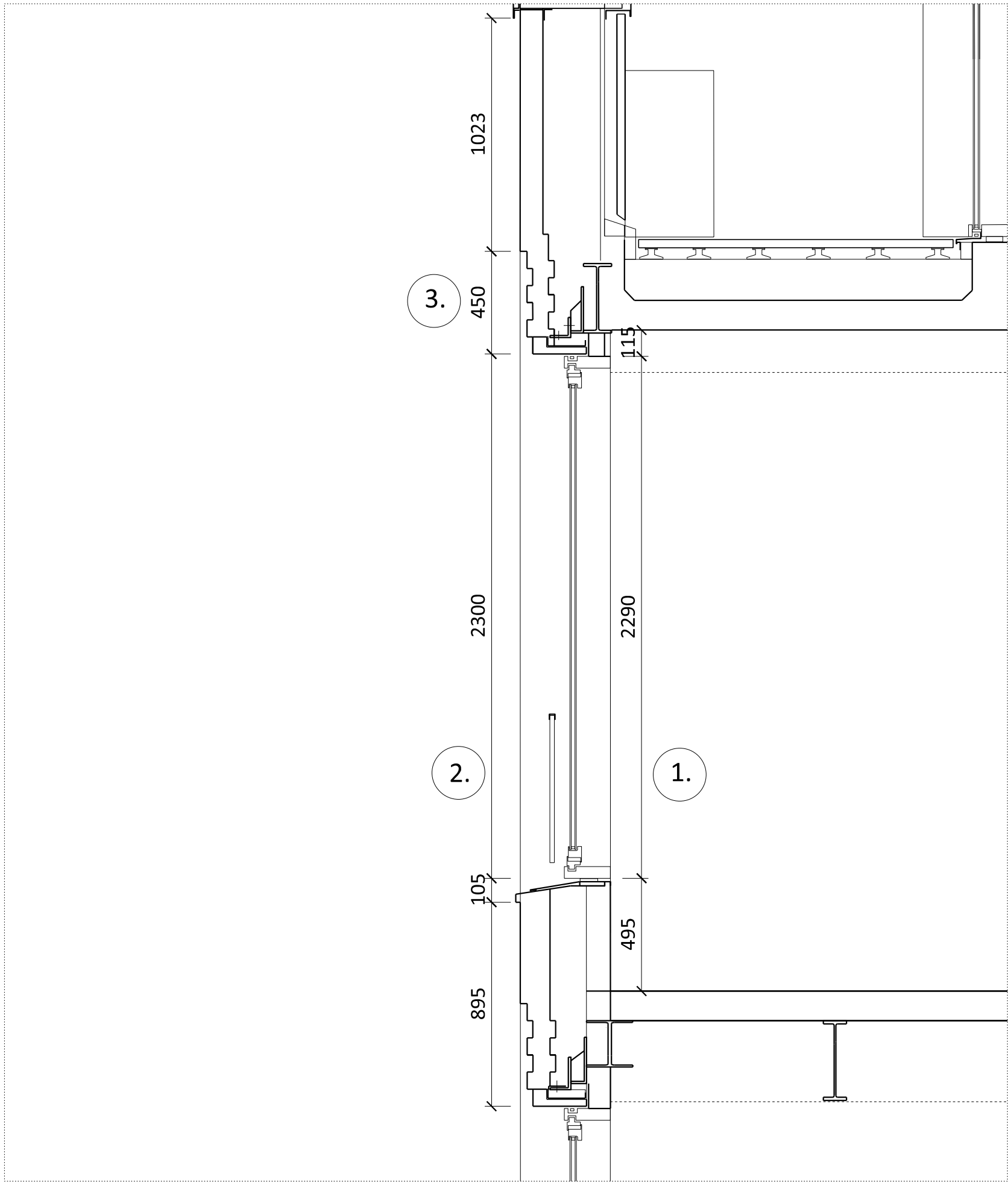
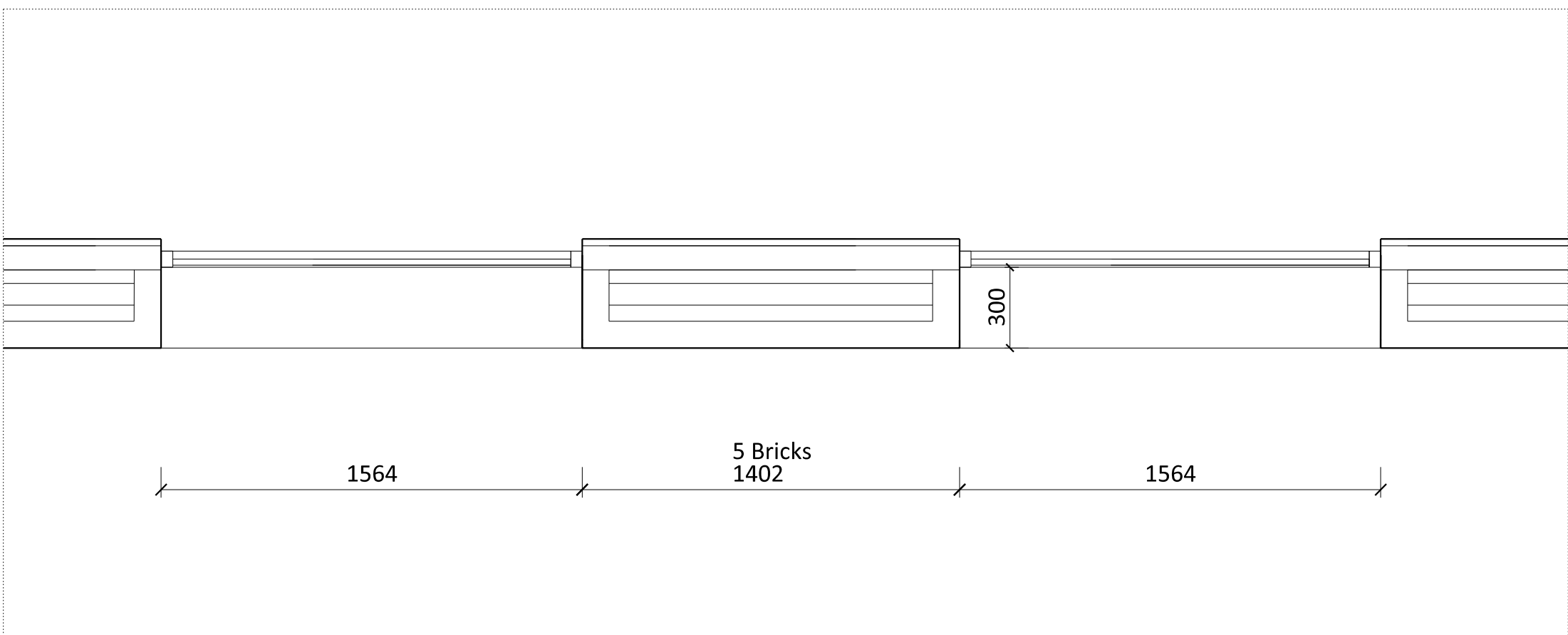


01 ELEVATION BAY STUDY DETAIL



02 SECTION DETAIL



03 PLAN DETAIL

1. Regular Large windows have a 365mm upstand above the floor to hide internal clutter.
2. A transom at 900 mm above FFL provides a comfortable feeling of security when the window is open.
3. Textured stepped brickwork spandrel with flush vertical and recessed horizontal mortar joints.
4. Vertical Brickwork Detail

NOTES
DO NOT SCALE FROM THIS DRAWING.
ALL DIMENSIONS TO BE CHECKED ON SITE.
ALL OMISSIONS AND DISCREPANCIES TO BE REPORTED TO THE ARCHITECT IMMEDIATELY.
DRAWINGS TO BE READ IN CONJUNCTION WITH ENGINEER'S DRAWINGS AND SPECIFICATION.

Planning Issue	08.09.21	PS	B
Planning Issue	19.04.21	PS	A
Pre-App Response	03.03.21	PS	-

Revision description	Date	Check	Rev
----------------------	------	-------	-----

G L U C K M A N S M I T H

Project
Royal College Street

Drawing
Facade Detail
Regents Canal Typical Window:
Type 3

Drawn	Date	Scale
PS	03.03.21	1:20 @ A1 1:40 @ A3

Job number	Drawing number	Revision
1929	_21_202_004	B