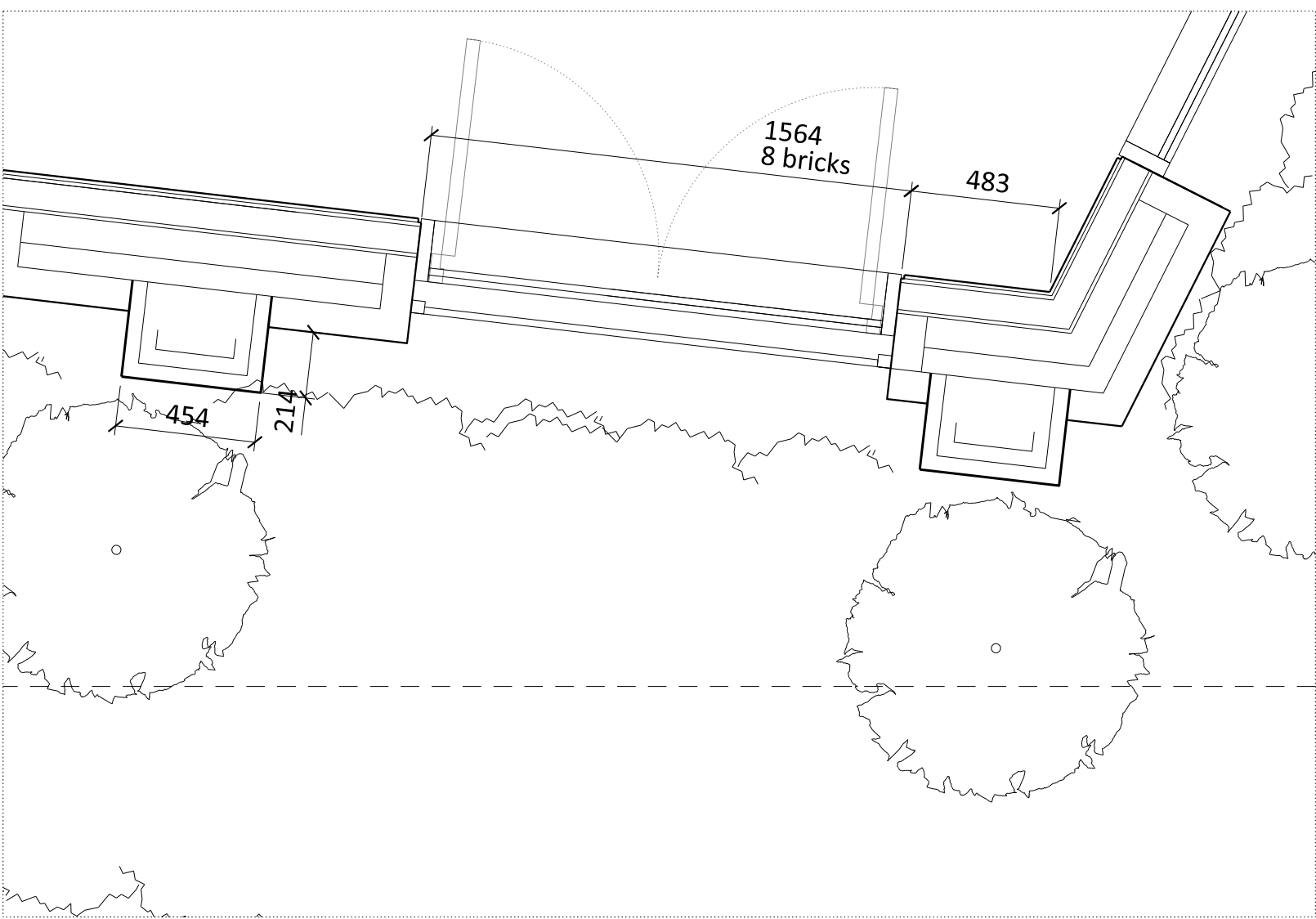
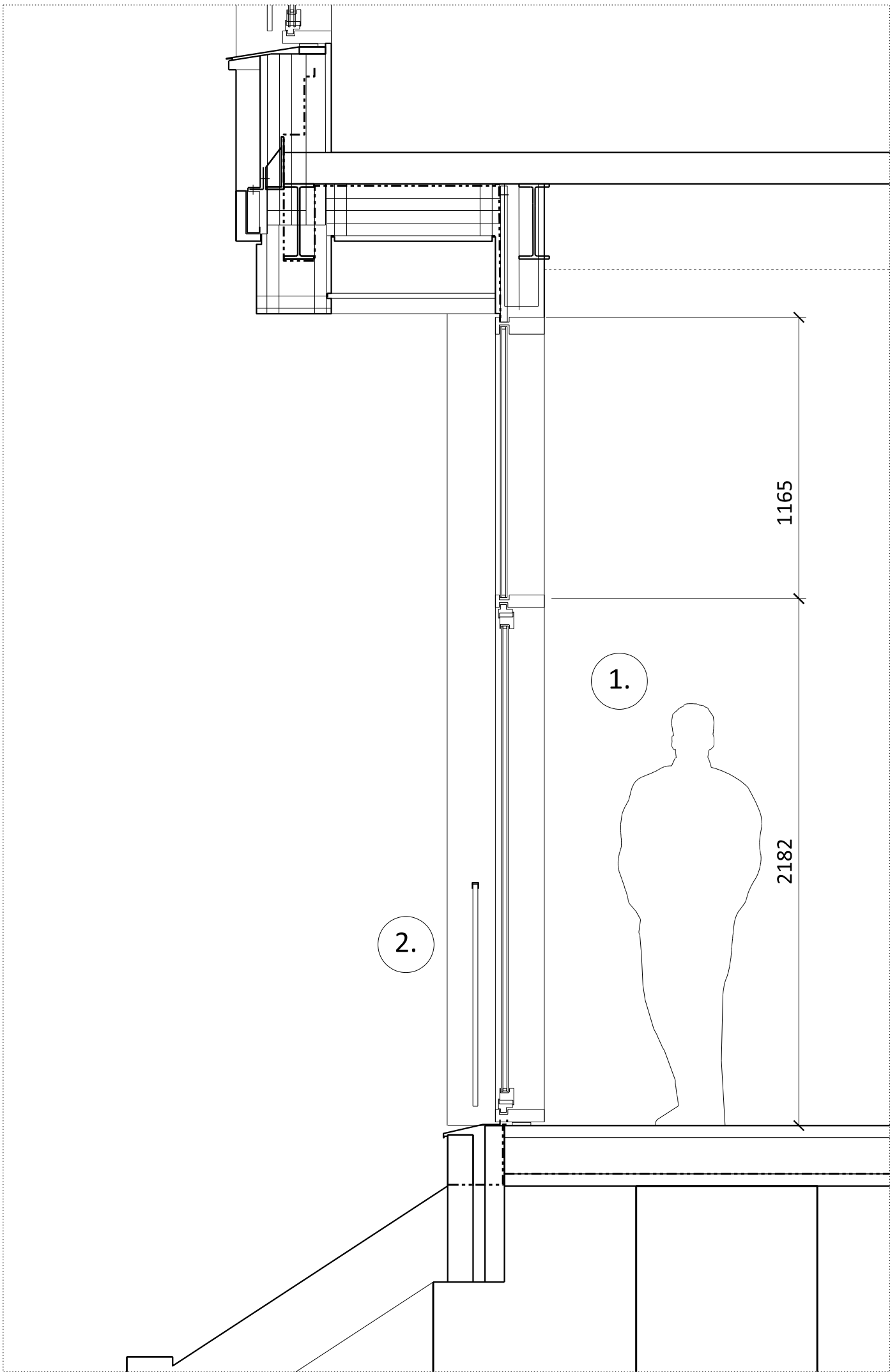


01 ELEVATION BAY STUDY DETAIL



03 PLAN DETAIL



02 SECTION DETAIL

1. Regular Large windows have an upstand above the floor to hide internal clutter. The windows provide a good quality of north light into the ground floor office space.
2. Glass Ballustrade Across Window Openings to provide juliet balcony feature
3. Textured stepped brickwork with flush vertical and recessed horizontal mortar joints.
4. The opening panes provide full height windows to the canal side and articulation interest to the elevation.
5. Vertical Brickwork Detail

NOTES
DO NOT SCALE FROM THIS DRAWING.
ALL DIMENSIONS TO BE CHECKED ON SITE.
ALL OMISSIONS AND DISCREPANCIES TO BE REPORTED TO THE ARCHITECT IMMEDIATELY.
DRAWINGS TO BE READ IN CONJUNCTION WITH ENGINEER'S DRAWINGS AND SPECIFICATION.

Planning Issue	28.10.21	PS	D
Planning Issue	08.09.21	PS	C
Planning Issue	19.04.21	PS	B
Issued for Stage 3	29.01.21	PS	A
Pre-App Response	07.01.20	PS	-

Revision description	Date	Check	Rev
----------------------	------	-------	-----

G L U C K M A N S M I T H

Project

Royal College Street

Drawing

Facade Detail
Canal Side Typical Ground Floor
Windows: Type 2

Drawn	Date	Scale
PS	07.01.20	1:20 @ A1 1:40 @ A3

Job number	Drawing number	Revision
1929	21_202_002	D