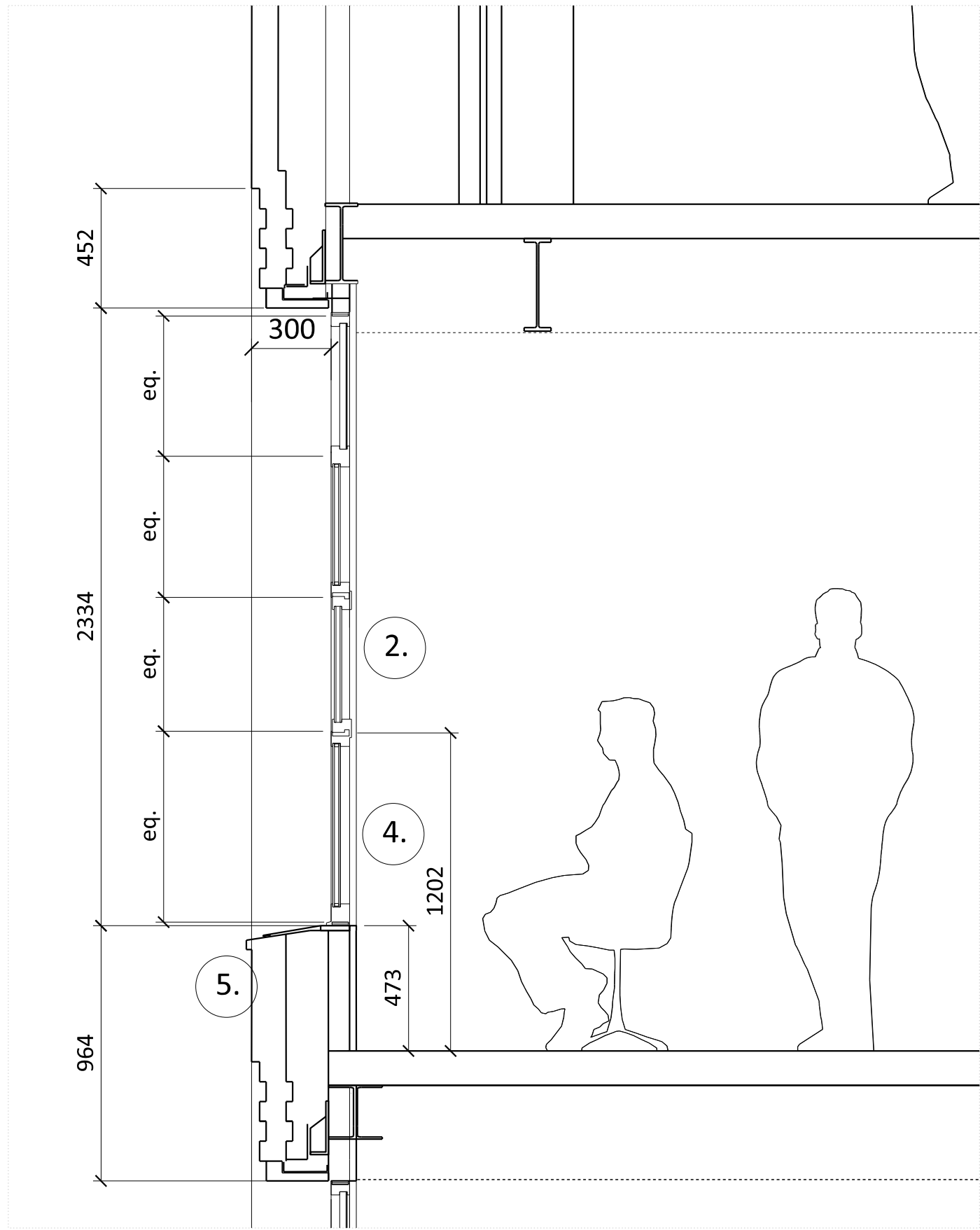
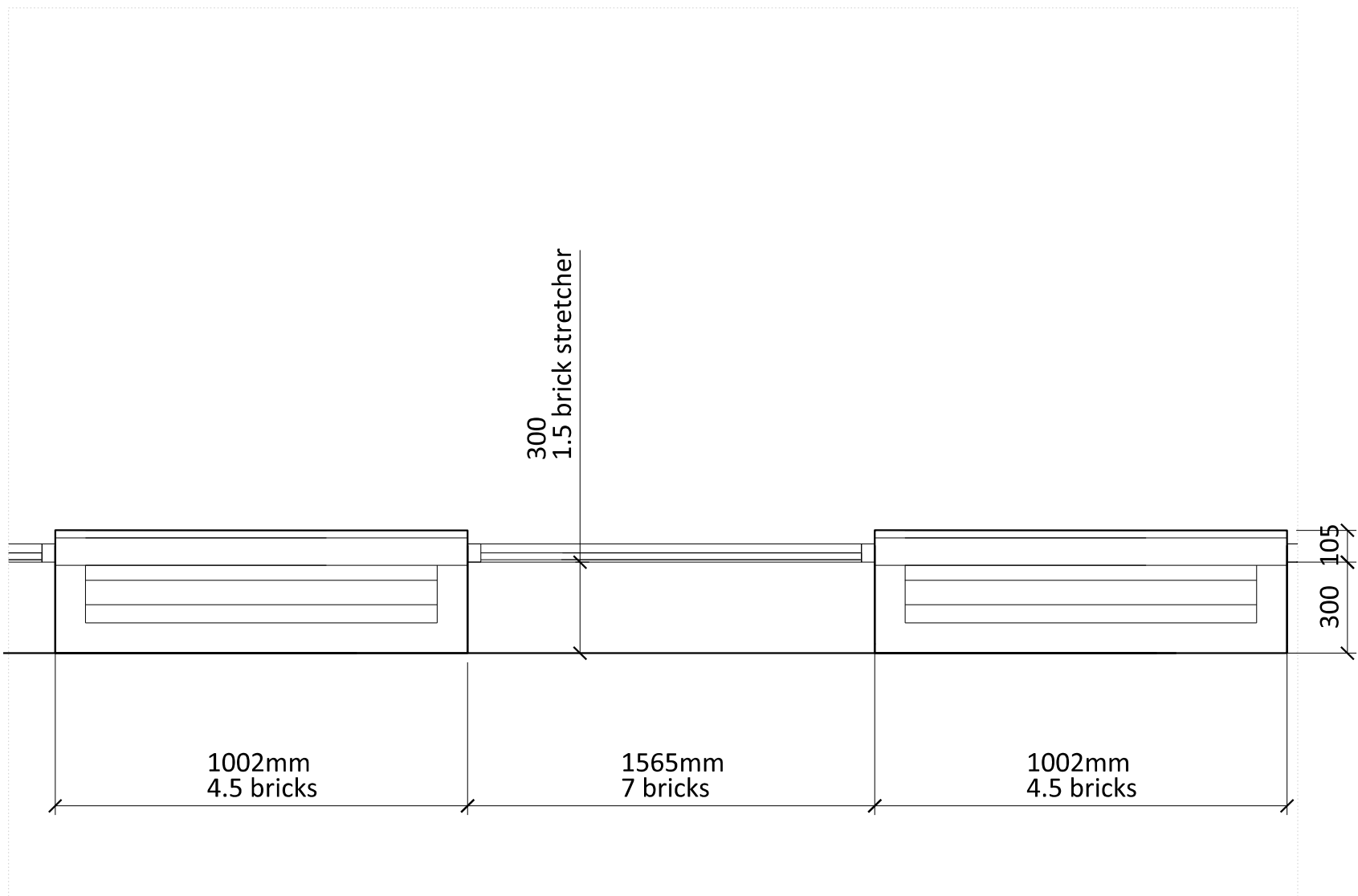


01 ELEVATION BAY STUDY DETAIL



02 SECTION DETAIL



03 PLAN DETAIL

1. Regular Large windows have a 365mm upstand above the floor to hide internal clutter.
2. Regular framed window panes, 1.5 m by 2.4 m high, are inset the length of a brick from the face of the brick wall.
3. The opening pane is set centrally, giving an articulation of interest to the elevation.
4. A transom at 900 mm above FFL provides a comfortable feeling of security when the window is open.
5. Textured stepped brickwork spandrel with flush vertical and recessed horizontal mortar joints.

NOTES
DO NOT SCALE FROM THIS DRAWING.
ALL DIMENSIONS TO BE CHECKED ON SITE.
ALL OMISSIONS AND DISCREPANCIES TO BE REPORTED TO THE ARCHITECT IMMEDIATELY.
DRAWINGS TO BE READ IN CONJUNCTION WITH ENGINEER'S DRAWINGS AND SPECIFICATION.

Issued for Planning	08.09.21	PS	B
Issued for Stage 3	29.01.21	PS	A
Pre-App Response	03.03.21	PS	-

Revision description	Date	Check	Rev
----------------------	------	-------	-----

G L U C K M A N S M I T H

Project

Royal College Street

Drawing

Facade Detail
Royal College Street Typical
Window Type 4

Drawn	Date	Scale
PS	03.03.21	1:20 @ A1 1:40 @ A3

Job number	Drawing number	Revision
1929	_21_201_004	B