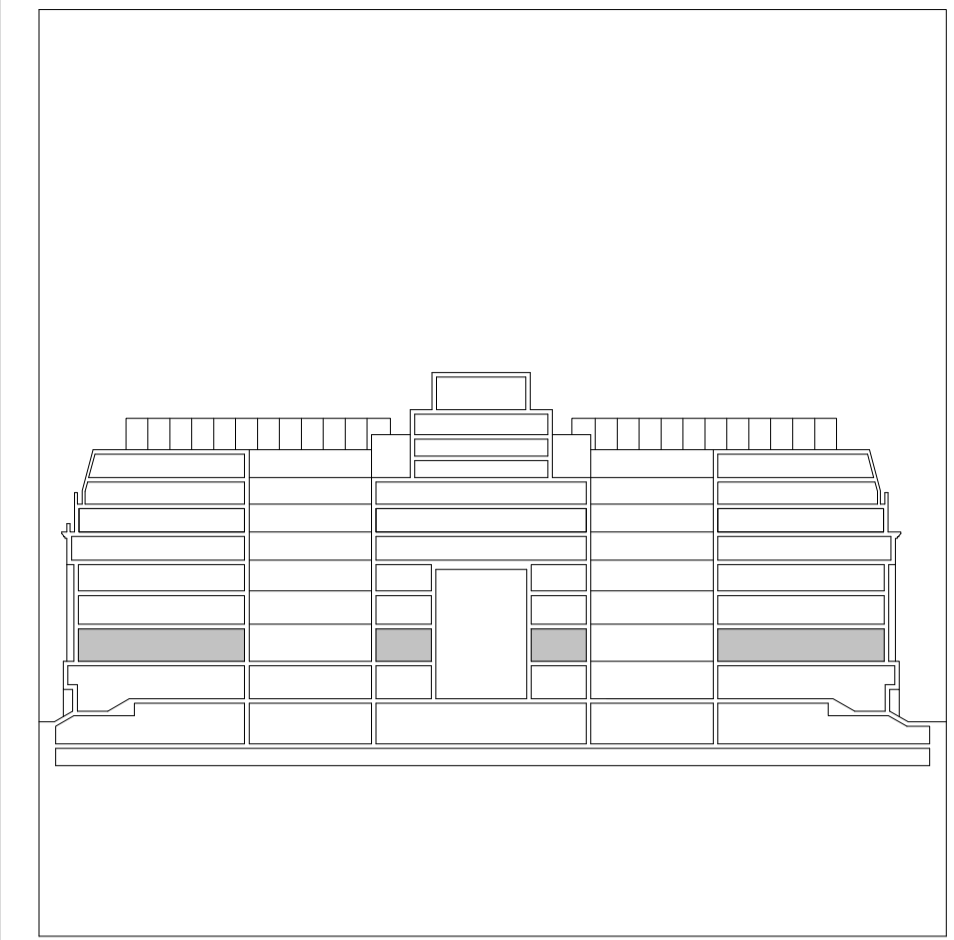






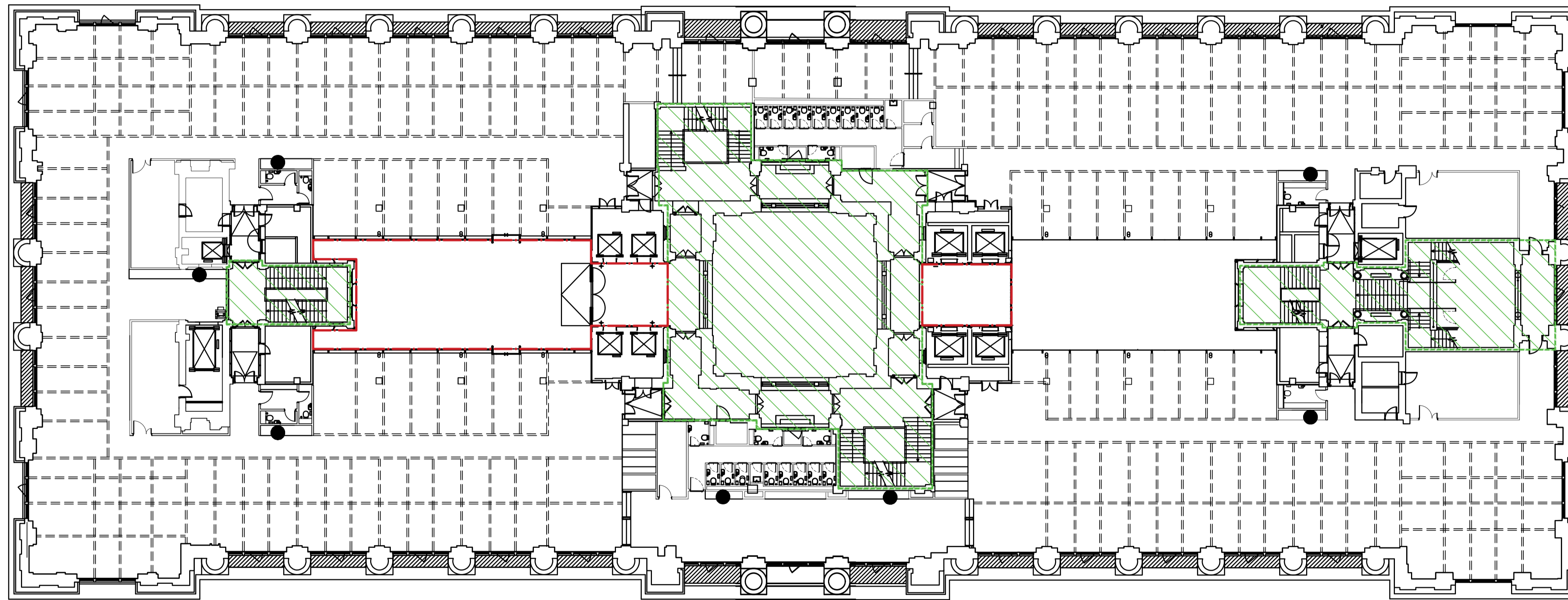
All dimensions are in mm unless otherwise stated
 All dimensions to be verified on site before proceeding with the work
 Any discrepancies to be notified in writing to Architect immediately
 All boundaries indicative only and to be confirmed by others



SOUTHAMPTON ROW

KEY:

-  INDICATES AREAS EXCLUDED FROM SCOPE
-  INDICATES POTENTIAL PARTITION LOCATIONS APPROVED BY 2019/6203/L
-  SERVICE POINT WITH CUPBOARD FOR POTENTIAL TEA POINT INSTALLATION APPROVED BY 2019/6203/L
-  INDICATES INTERVENTION AREA WITH CHANGE OF FLOORING TO TERRAZZO TILES: 1200x900MM WITH 2MM GROUT JOINT (MAPEI 120 JASMINE), INOPERA GROUP PIETRA LIOZ, REF. MSMRM31, HONED FINISH



BLOOMSBURY SQUARE

| 02 | 24.11.21 | Issued for Planning | YR |
|-----|----------|---------------------|-----|
| 01 | 15.01.20 | Issued for Planning | JW |
| 00 | 09.12.19 | Issued for Planning | MR |
| REV | DATE | NOTES | INT |

PLANNING

HUTCHINSON & PARTNERS

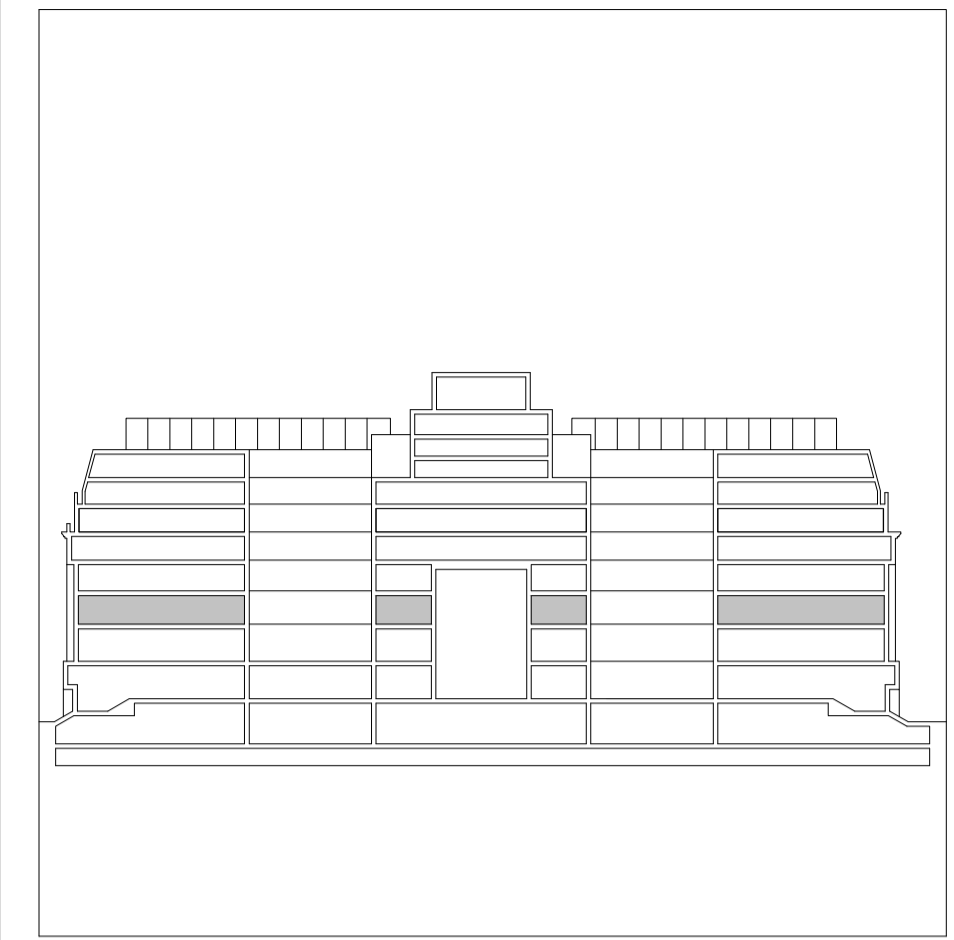
3-14 The Record Hall, 16-16A Baldwin's Garden, London, EC1N 7RJ
 t. 020 3176 8196 e. info@hutchinsonandpartners.com w. www.hutchinsonandpartners.com

JOB TITLE
 LABS, Victoria House, Camden

DRAWING TITLE / LOCATION
 Proposed Level 01 Indicative Partition Layout




| | | | |
|----------|----------------|------------|----------|
| DRAWN BY | CHECKED | SCALE @ A1 | STATUS |
| MR | JB | 1:200 | PLANNING |
| PROJECT | DRAWING NO | REVISION | |
| 19023 | 01 AP 0010 201 | 02 | |
| CLIENT | | | |

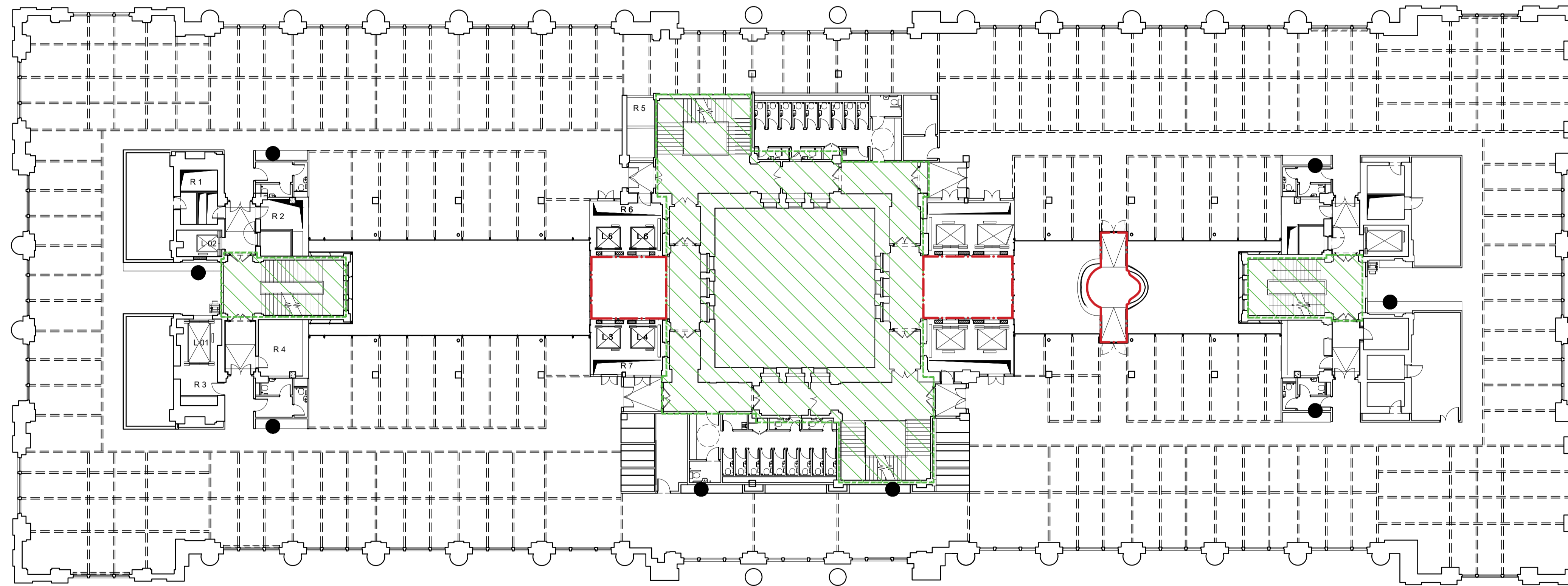
All dimensions are in mm unless otherwise stated
 All dimensions to be verified on site before proceeding with the work
 Any discrepancies to be notified in writing to Architect immediately
 All boundaries indicative only and to be confirmed by others



SOUTHAMPTON ROW

KEY:

-  INDICATES AREAS EXCLUDED FROM SCOPE
-  INDICATES POTENTIAL PARTITION LOCATIONS APPROVED BY 2019/6203/L
-  SERVICE POINT WITH CUPBOARD FOR POTENTIAL TEA POINT INSTALLATION APPROVED BY 2019/6203/L
-  INDICATES INTERVENTION AREA WITH CHANGE OF FLOORING TO TERRAZZO TILES: 1200x900MM WITH 2MM GROUT JOINT (MAPEI 120 JASMINE), INOPERA GROUP PIETRA LIOZ, REF. MSMRM31, HONED FINISH



BLOOMSBURY SQUARE

| | | | |
|-----|----------|---------------------|-----|
| 02 | 24.11.21 | Issued for Planning | YR |
| 01 | 15.01.20 | Issued for Planning | JW |
| - | 09.12.19 | Issued for Planning | MR |
| REV | DATE | NOTES | INT |

PLANNING

HUTCHINSON & PARTNERS

3-14 The Record Hall, 16-16A Baldwin's Garden, London, EC1N 7RJ
 t. 020 3176 8196 e. info@hutchinsonandpartners.com w. www.hutchinsonandpartners.com

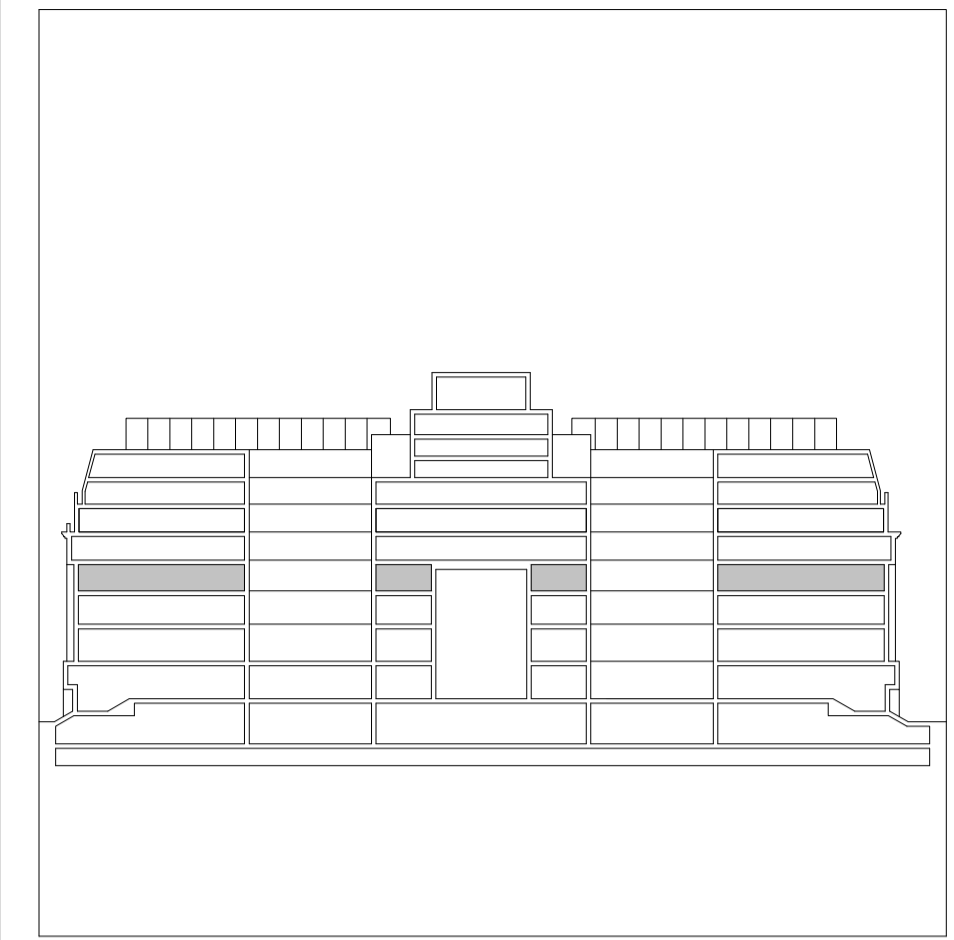
JOB TITLE
 LABS, Victoria House, Camden

DRAWING TITLE / LOCATION
 Proposed Level 02 Indicative Partition Layout

| | | | |
|----------|----------------|------------|----------|
| DRAWN BY | CHECKED | SCALE @ A1 | STATUS |
| MR | JB | 1:200 | PLANNING |
| PROJECT | DRAWING NO | REVISION | |
| 19023 | 01 AP 0010 202 | 02 | |





CLIENT

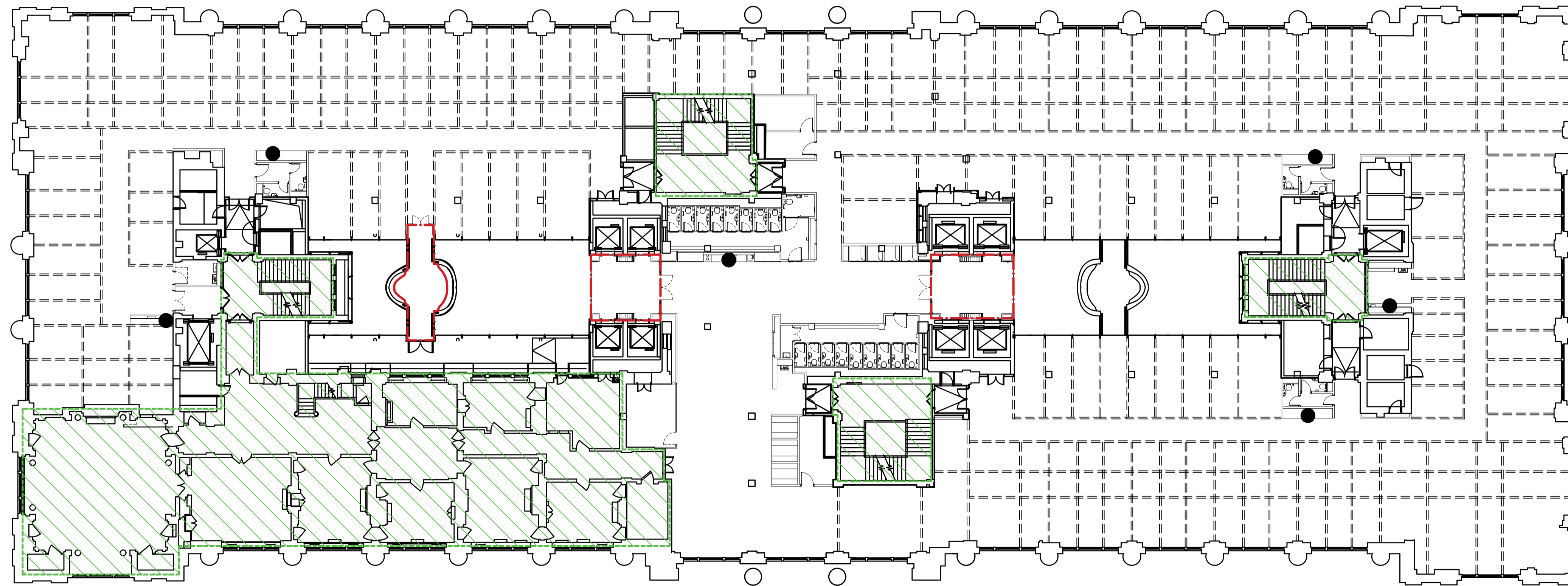
All dimensions are in mm unless otherwise stated
 All dimensions to be verified on site before proceeding with the work
 Any discrepancies to be notified in writing to Architect immediately
 All boundaries indicative only and to be confirmed by others



SOUTHAMPTON ROW

KEY:

-  INDICATES AREAS EXCLUDED FROM SCOPE
-  INDICATES POTENTIAL PARTITION LOCATIONS APPROVED BY 2019/6203/L
-  SERVICE POINT WITH CUPBOARD FOR POTENTIAL TEA POINT INSTALLATION APPROVED BY 2019/6203/L
-  INDICATES INTERVENTION AREA WITH CHANGE OF FLOORING TO TERRAZZO TILES: 1200x900MM WITH 2MM GROUT JOINT (MAPEI 120 JASMINE), INOPERA GROUP PIETRA LIOZ, REF. MSMRM31, HONED FINISH



BLOOMSBURY SQUARE

| | | | |
|-----|----------|---------------------|-----|
| 02 | 24.11.21 | Issued for Planning | YR |
| 01 | 15.01.20 | Issued for Planning | JW |
| 00 | 09.12.19 | Issued for Planning | MR |
| REV | DATE | NOTES | INT |

PLANNING

HUTCHINSON & PARTNERS

3-14 The Record Hall, 16-16A Baldwin's Garden, London, EC1N 7RJ
 t. 020 3176 8196 e. info@hutchinsonandpartners.com w. www.hutchinsonandpartners.com

JOB TITLE
 LABS, Victoria House, Camden

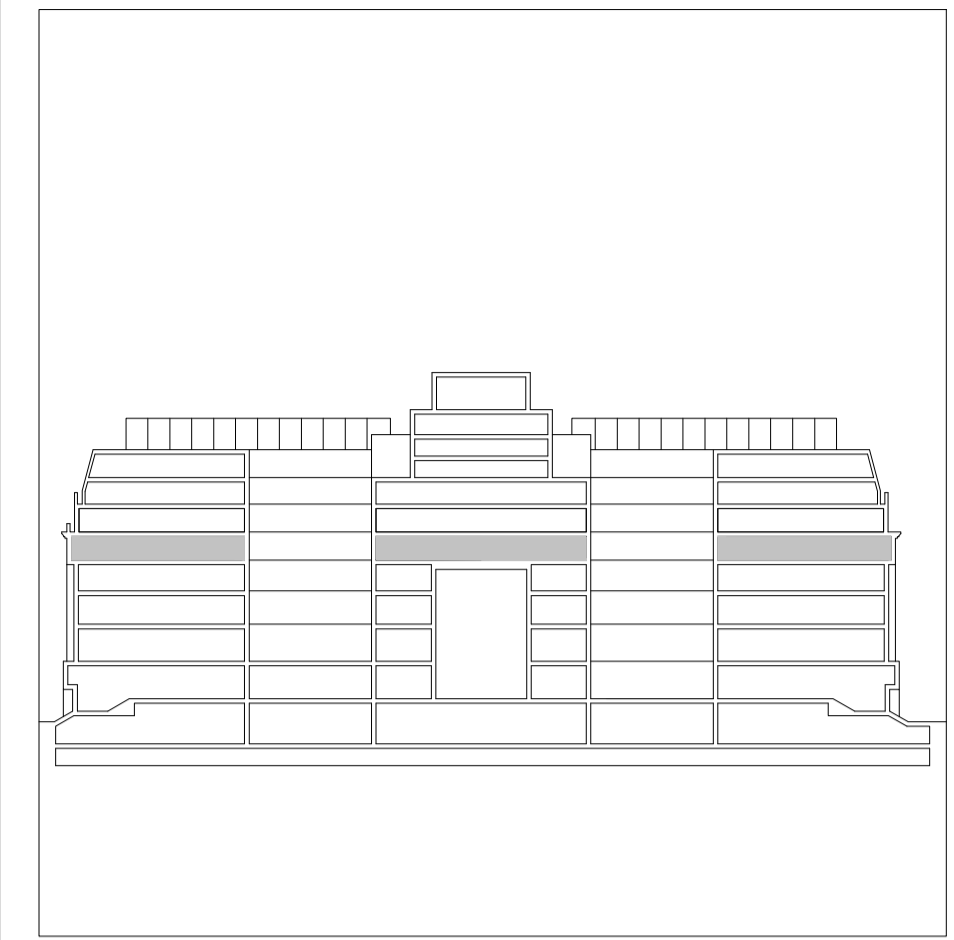
DRAWING TITLE / LOCATION
 Proposed Level 03 Indicative Partition Option 01
 Layout

| | | | |
|----------|---------|------------|----------|
| DRAWN BY | CHECKED | SCALE @ A1 | STATUS |
| MR | JB | 1:200 | PLANNING |

| | | |
|---------|----------------|----------|
| PROJECT | DRAWING NO | REVISION |
| 19023 | 01 AP 0010 204 | 02 |




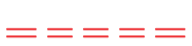



CLIENT

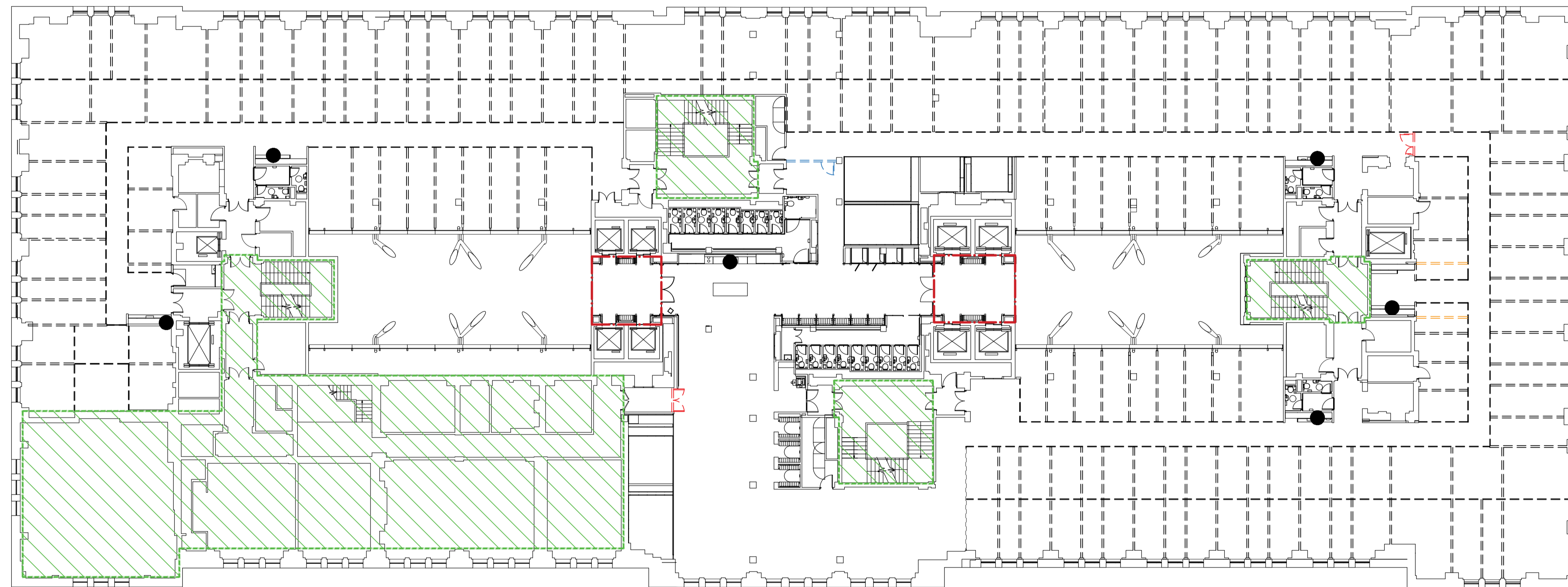
All dimensions are in mm unless otherwise stated
 All dimensions to be verified on site before proceeding with the work
 Any discrepancies to be notified in writing to Architect immediately
 All boundaries indicative only and to be confirmed by others



SOUTHAMPTON ROW

KEY:

-  INDICATES AREAS EXCLUDED FROM SCOPE
-  INDICATES POTENTIAL PARTITION LOCATIONS APPROVED BY 2019/6203/L
-  SERVICE POINT WITH CUPBOARD FOR POTENTIAL TEA POINT INSTALLATION APPROVED BY 2019/6203/L
-  INDICATES NEW STUD PARTITION & DOOR
-  INDICATES NEW GLAZED PARTITION & DOOR
-  INDICATES NEW STUD PARTITION
-  INDICATES INTERVENTION AREA WITH CHANGE OF FLOORING TO TERRAZZO TILES: 1200x900MM WITH 2MM GROUT JOINT (MAPEI 120 JASMINE), INOPERA GROUP PIETRA LIOZ, REF. MSMRM31, HONED FINISH



BLOOMSBURY SQUARE

| | | | |
|-----|----------|---------------------|-----|
| 03 | 24.11.21 | Issued for Planning | YR |
| 02 | 06.03.20 | Issued for Planning | OM |
| 01 | 10.01.20 | Issued for Planning | JW |
| - | 09.12.19 | Issued for Planning | MR |
| REV | DATE | NOTES | INT |

PLANNING

HUTCHINSON & PARTNERS

3-14 The Record Hall, 16-16A Baldwin's Garden, London, EC1N 7RJ
 t. 020 3176 8196 e. info@hutchinsonandpartners.com w. www.hutchinsonandpartners.com

JOB TITLE
 LABS, Victoria House, Camden

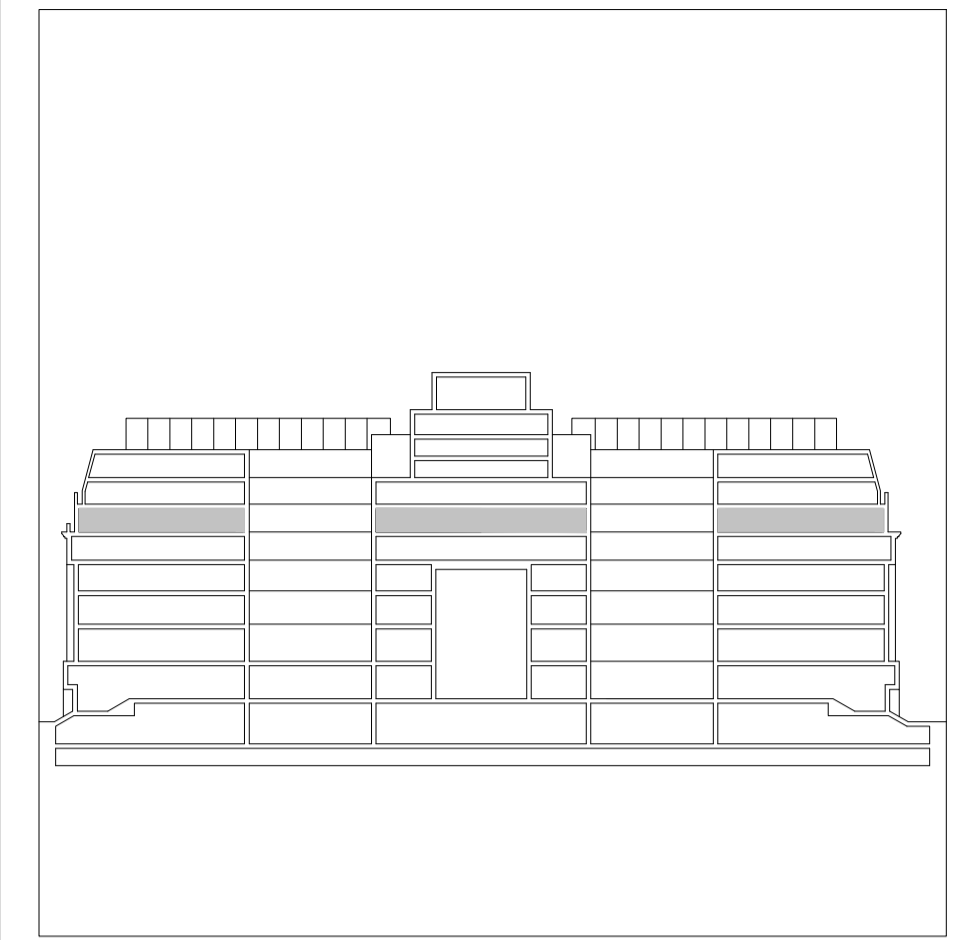
DRAWING TITLE / LOCATION
 Proposed Level 04 Indicative Partition

| | | | |
|----------|---------|------------|----------|
| DRAWN BY | CHECKED | SCALE @ A1 | STATUS |
| MR | JB | 1:200 | PLANNING |

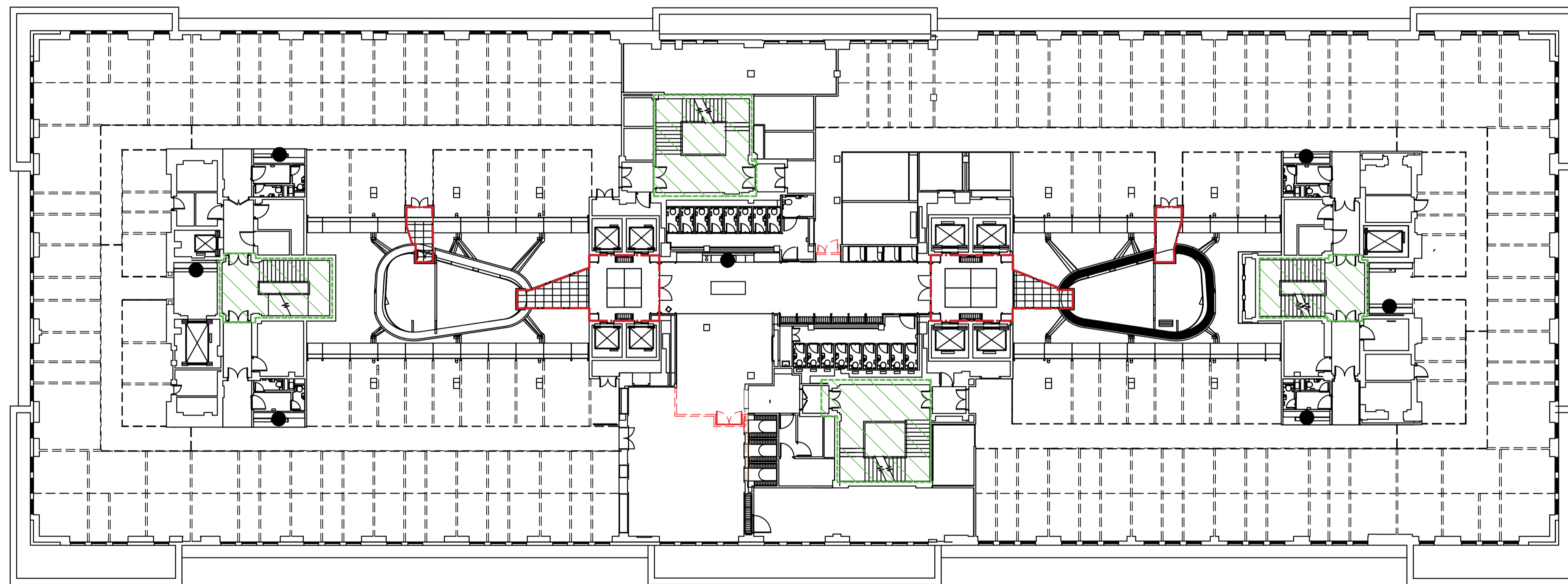
| | | |
|---------|----------------|----------|
| PROJECT | DRAWING NO | REVISION |
| 19023 | 01 AP 0010 206 | 03 |

CLIENT

All dimensions are in mm unless otherwise stated
 All dimensions to be verified on site before proceeding with the work
 Any discrepancies to be notified in writing to Architect immediately
 All boundaries indicative only and to be confirmed by others



SOUTHAMPTON ROW



KEY:

- INDICATES AREAS EXCLUDED FROM SCOPE
- INDICATES POTENTIAL PARTITION LOCATIONS APPROVED BY 2019/6203/L
- SERVICE POINT WITH CUPBOARD FOR POTENTIAL TEA POINT INSTALLATION APPROVED BY 2019/6203/L
- INDICATES NEW STUD PARTITION & DOOR
- INDICATES NEW STUD PARTITION
- INDICATES INTERVENTION AREA WITH CHANGE OF FLOORING TO TERRAZZO TILES: 1200x900MM WITH 2MM GROUT JOINT (MAPEI 120 JASMINE), INOPERA GROUP PIETRA LIOZ. REF. MSMRM31, HONED FINISH

BLOOMSBURY SQUARE

| | | | |
|-----|----------|---------------------|-----|
| 03 | 24.11.21 | Issued for Planning | YR |
| 02 | 06.03.20 | Issued for Planning | OM |
| 01 | 10.01.20 | Issued for Planning | JW |
| - | 09.12.19 | Issued for Planning | MR |
| REV | DATE | NOTES | INT |

PLANNING

HUTCHINSON & PARTNERS

3-14 The Record Hall, 16-16A Baldwin's Garden, London, EC1N 7RJ
 t. 020 3176 8196 e. info@hutchinsonandpartners.com w. www.hutchinsonandpartners.com

JOB TITLE
 LABS, Victoria House, Camden

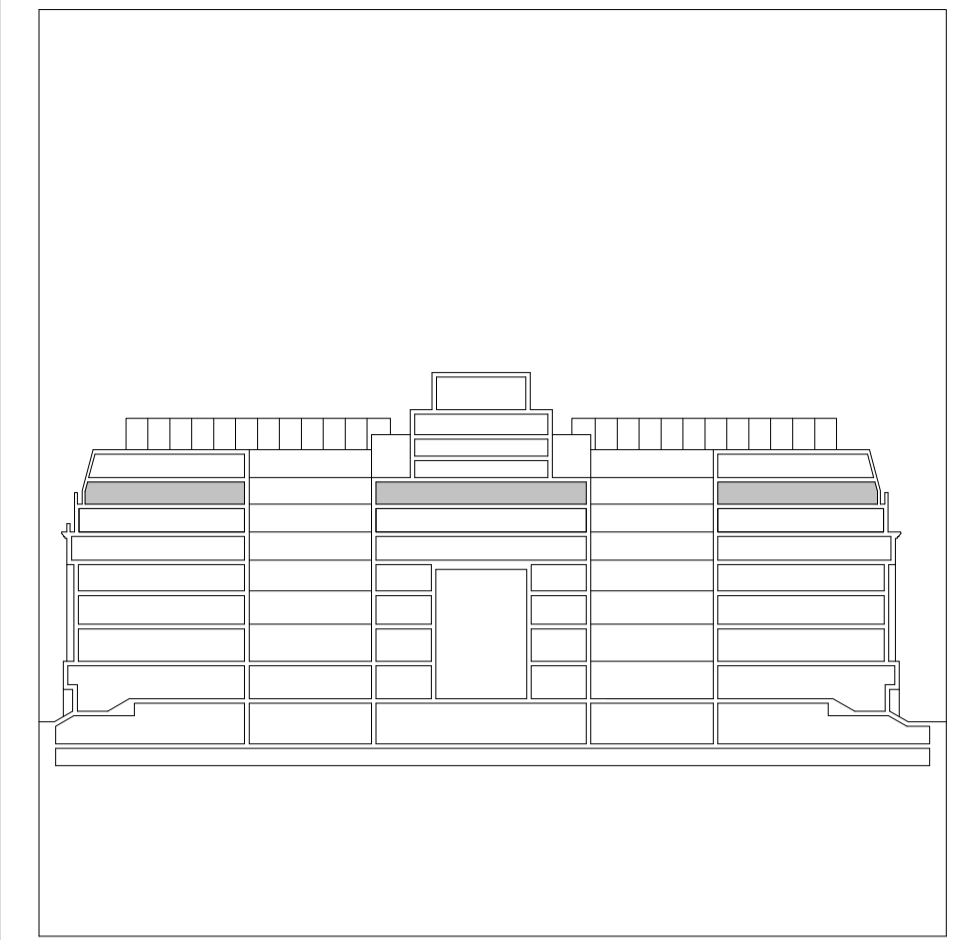
DRAWING TITLE / LOCATION
 Proposed Level 05 Indicative Partition
 Option 01 Layout

| | | | |
|----------|---------|------------|----------|
| DRAWN BY | CHECKED | SCALE @ A1 | STATUS |
| MR | JB | 1:200 | PLANNING |

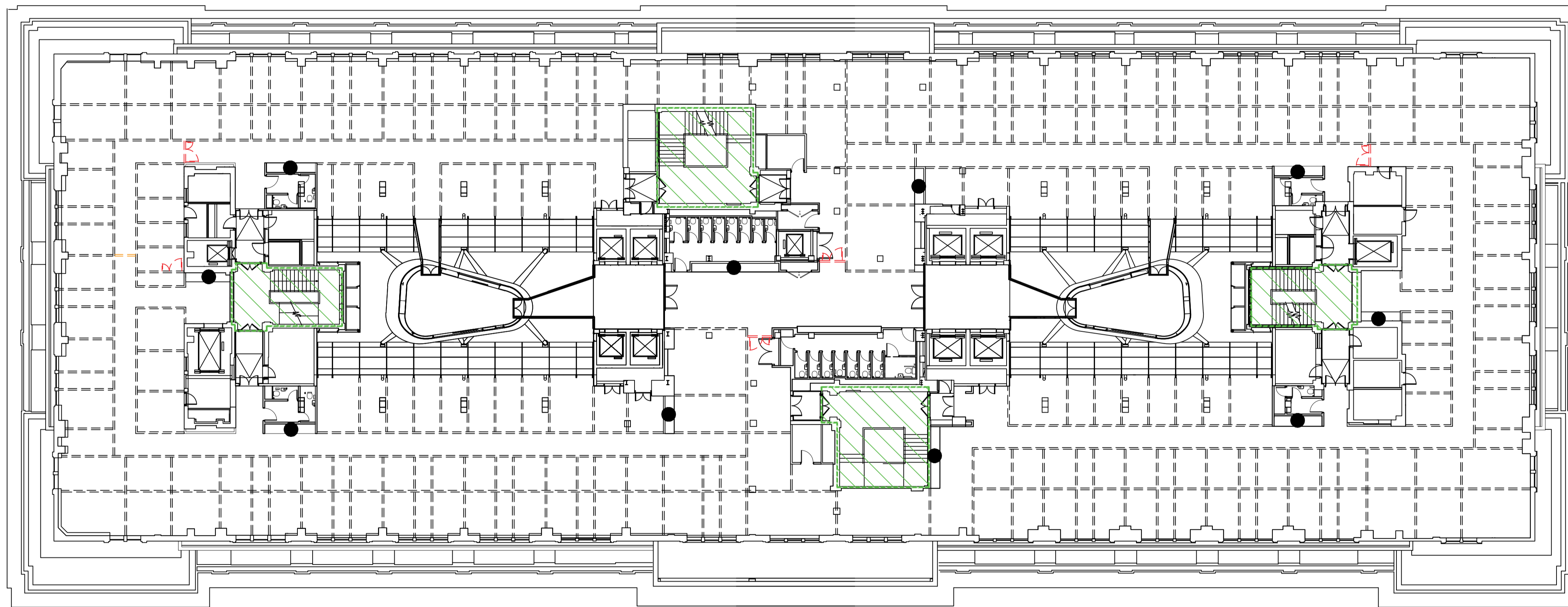
| | | |
|---------|----------------|----------|
| PROJECT | DRAWING NO | REVISION |
| 19023 | 01 AP 0010 208 | 03 |

CLIENT

All dimensions are in mm unless otherwise stated
 All dimensions to be verified on site before proceeding with the work
 Any discrepancies to be notified in writing to Architect immediately
 All boundaries indicative only and to be confirmed by others

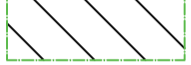
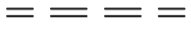

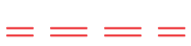



SOUTHAMPTON ROW



BLOOMSBURY SQUARE

KEY:

-  INDICATES AREAS EXCLUDED FROM SCOPE
-  INDICATES POTENTIAL PARTITION LOCATIONS APPROVED BY 2019/6203/L
-  SERVICE POINT WITH CUPBOARD FOR POTENTIAL TEA POINT INSTALLATION APPROVED BY 2019/6203/L
-  INDICATES NEW STUD PARTITION & DOOR
-  INDICATES NEW STUD PARTITION

| | | | |
|-----|----------|---------------------|-----|
| 02 | 24.11.21 | Issued for Planning | YR |
| 01 | 15.01.20 | Issued for Planning | JW |
| - | 09.12.19 | Issued for Planning | MR |
| REV | DATE | NOTES | INT |

PLANNING

HUTCHINSON & PARTNERS

3-14 The Record Hall, 16-16A Baldwin's Garden, London, EC1N 7RJ
 t. 020 3176 8196 e. info@hutchinsonandpartners.com w. www.hutchinsonandpartners.com

JOB TITLE
 LABS, Victoria House, Camden

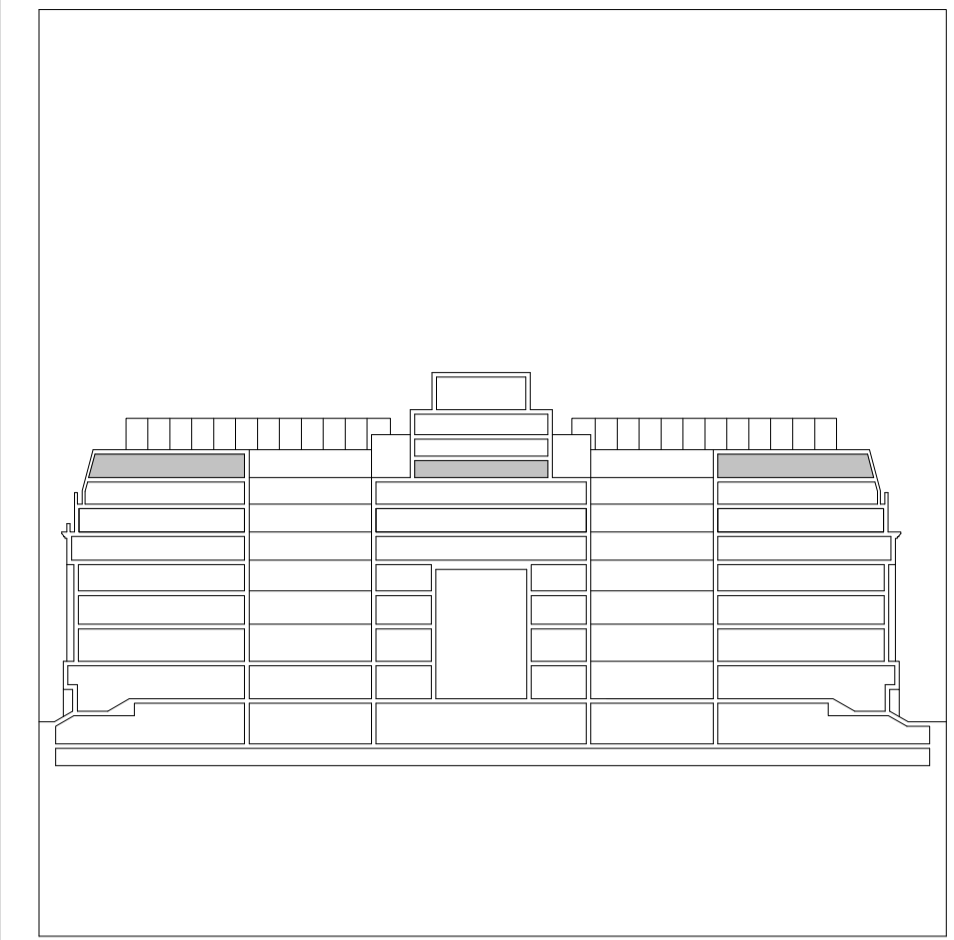
DRAWING TITLE / LOCATION
 Proposed Level 06 Indicative Partition Option 01
 Layout

| | | | |
|----------|---------|------------|----------|
| DRAWN BY | CHECKED | SCALE @ A1 | STATUS |
| MR | JB | 1:200 | PLANNING |

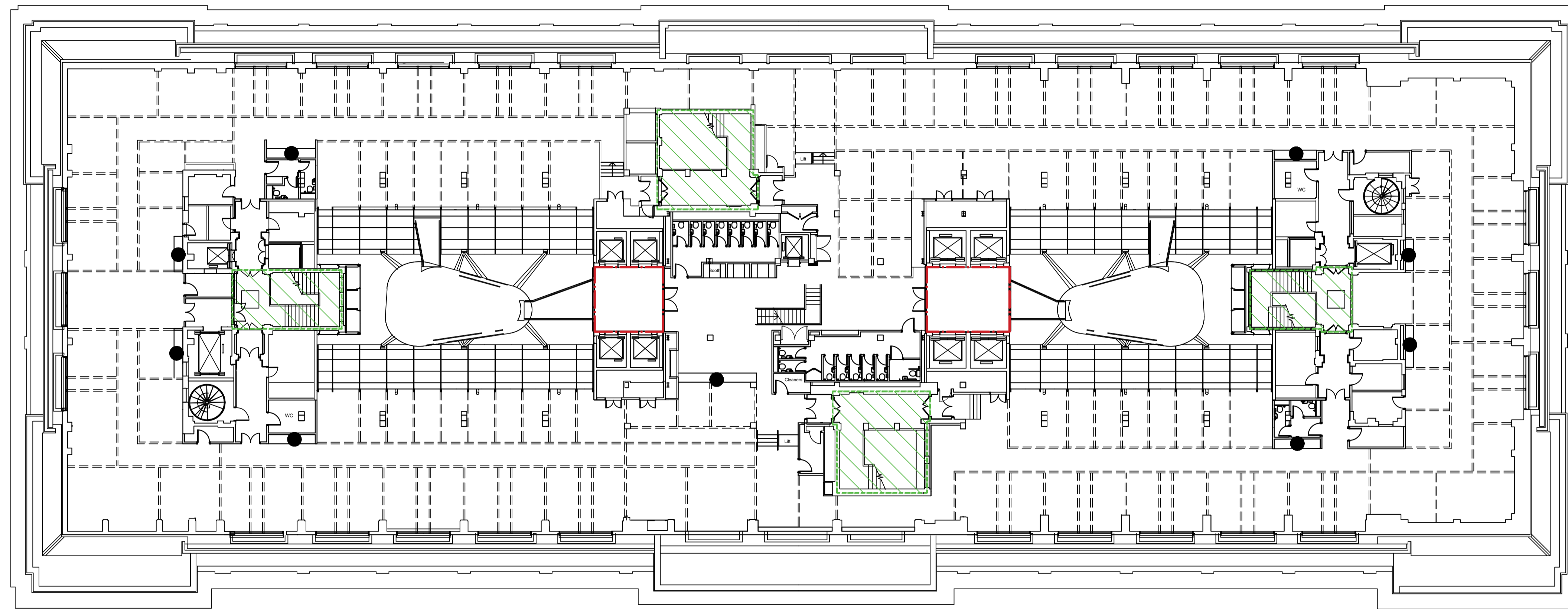
| | | |
|---------|----------------|----------|
| PROJECT | DRAWING NO | REVISION |
| 19023 | 01 AP 0010 212 | 02 |

CLIENT

All dimensions are in mm unless otherwise stated
 All dimensions to be verified on site before proceeding with the work
 Any discrepancies to be notified in writing to Architect immediately
 All boundaries indicative only and to be confirmed by others



SOUTHAMPTON ROW



KEY:

- INDICATES AREAS EXCLUDED FROM SCOPE
- INDICATES POTENTIAL PARTITION LOCATIONS APPROVED BY 2019/6203/L
- SERVICE POINT WITH CUPBOARD FOR POTENTIAL TEA POINT INSTALLATION APPROVED BY 2019/6203/L
- INDICATES INTERVENTION AREA WITH CHANGE OF FLOORING TO TERRAZZO TILES: 1200x900MM WITH 2MM GROUT JOINT (MAPEI 120 JASMINE), INOPERA GROUP PIETRA LIOZ, REF. MSMRM31, HONED FINISH

BLOOMSBURY SQUARE

| | | | |
|-----|----------|---------------------|-----|
| 02 | 24.11.21 | Issued for Planning | YR |
| 01 | 15.01.20 | Issued for Planning | JW |
| 00 | 09.12.19 | Issued for Planning | MR |
| REV | DATE | NOTES | INT |

PLANNING

HUTCHINSON & PARTNERS

3-14 The Record Hall, 16-16A Baldwin's Garden, London, EC1N 7RJ
 t. 020 3176 8196 e. info@hutchinsonandpartners.com w. www.hutchinsonandpartners.com

JOB TITLE
LABS, Victoria House, Camden

DRAWING TITLE / LOCATION
**Proposed Level 07 Indicative Partition Option 01
 Layout**

| | | | |
|----------|---------|------------|----------|
| DRAWN BY | CHECKED | SCALE @ A1 | STATUS |
| MR | JB | 1:200 | PLANNING |

| | | |
|---------|----------------|----------|
| PROJECT | DRAWING NO | REVISION |
| 19023 | 01 AP 0010 214 | 02 |

CLIENT