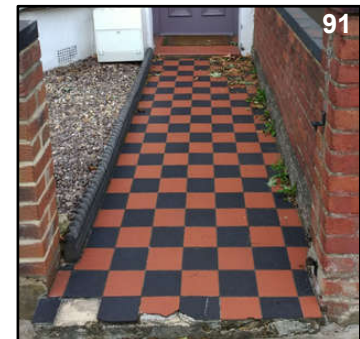
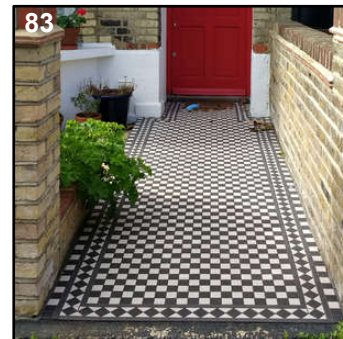
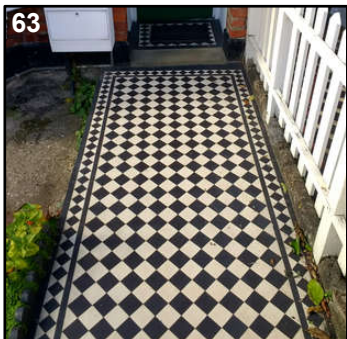
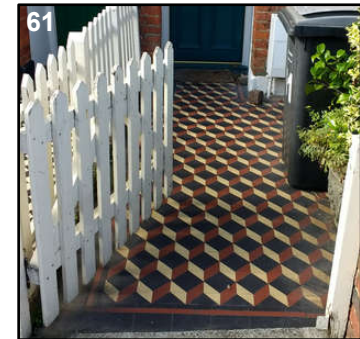
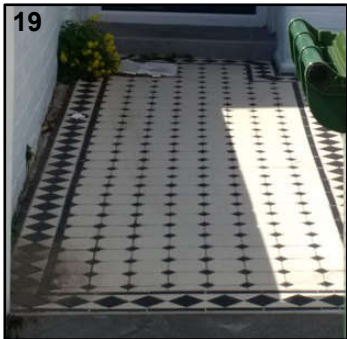
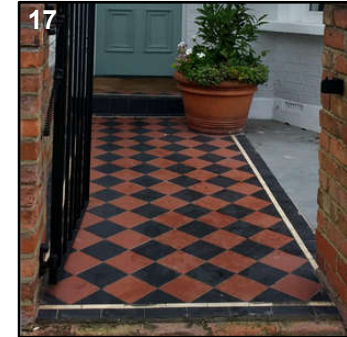
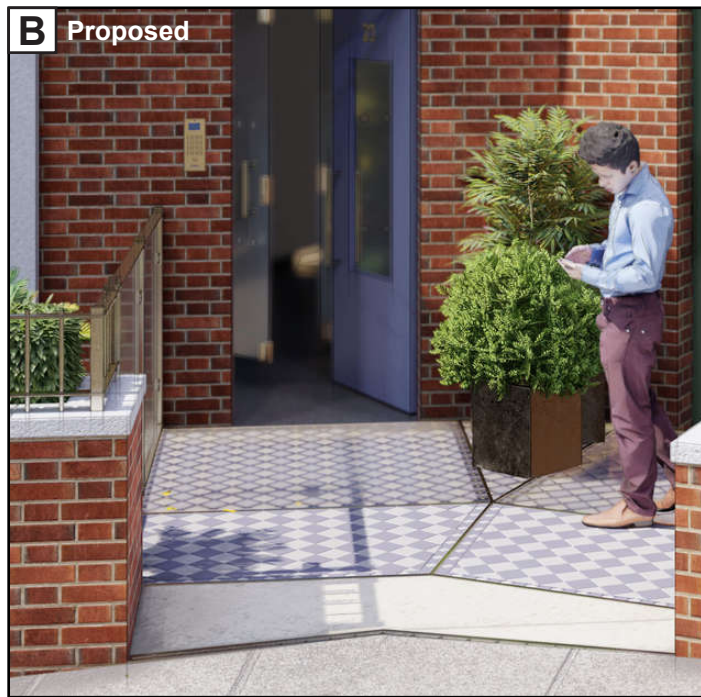


Victorian tile front paths in Ravenshaw Street.

See the **Design and Access Statement Page's 25 and 26** for a full explanation of the reasoning behind the entrance a light well design.

Although many of the Victorian tile paths in Ravenshaw Street have been concreted over or replaced with flags or quarry tiles, many remain as an iconic feature of this typical Victorian terrace.



Previously approved full glass entrance walkway; 2013

The LPA previously approved this larger (6m2) and completely clear glass entrance walkway at 33 Holmdale Road, just 400m distant; See 2013/0680/P. The glass can't have been of much concern to officers as the report doesn't even mention this feature at all. Our entrance path proposal is orders of magnitude more considered than this. It will be much more keeping with the street, far less obtrusive, provide greater privacy and meet slip resistance tests - something that doesn't even seem to have been thought about here. Officers can be assured that we will **not** be emulating this developer's illumination scheme.

