

DRAWING LIST

205-00-000	Location Plan
205-00-001	Site Plan
205-00-010	Existing Lower Ground Floor Plan
205-00-011	Existing Ground Floor Plan
205-00-012	Existing First Floor Plan
205-00-013	Existing Second Floor Plan
205-00-014	Existing Roof Plan
205-00-020	Existing Street and Rear Elevations
205-00-030	Existing Section A
205-00-031	Existing Section B
205-00-100	Proposed Lower Ground Floor Plan
205-00-101	Proposed Ground Floor Plan
205-00-102	Proposed First Floor Plan
205-00-103	Proposed Second Floor Plan
205-00-104	Proposed Roof Plan
205-00-200	Proposed Street and Rear Elevations
205-00-300	Proposed Section A
205-00-301	Proposed Section B

[illegible]

Garloch House
91 011

17

15

19

23

25

28

31

34

37

40

43

46

49

52

55

58

61

64

67

70

73

76

79

82

85

88

91

94

97

100

103

106

109

112

115

118

121

124

127

130

133

136

139

142

145

148

151

154

157

160

163

166

169

172

175

178

181

184

187

190

193

196

199

202

205

208

211

214

217

220

223

226

229

232

235

238

241

244

247

250

253

256

259

262

265

268

271

274

277

280

283

286

289

292

295

298

301

304

307

310

313

316

319

322

325

328

331

334

337

340

343

346

349

352

355

358

361

364

367

370

373

376

379

382

385

388

391

394

397

400

403

406

409

412

415

418

421

424

427

430

433

436

439

442

445

448

451

454

457

460

463

466

469

472

475

478

481

484

487

490

493

496

499

502

505

508

511

514

517

520

523

526

529

532

535

538

541

544

547

550

553

556

559

562

565

568

571

574

577

580

583

586

589

592

595

598

601

604

607

610

613

616

619

622

625

628

631

634

637

640

643

646

649

652

655

658

661

664

667

670

673

676

679

682

685

688

691

694

697

700

703

706

709

712

715

718

721

724

727

730

733

736

739

742

745

748

751

754

757

760

763

766

769

772

775

778

781

784

787

790

793

796

799

802

805

808

811

814

817

820

823

826

829

832

835

838

841

844

847

850

853

856

859

862

865

868

871

874

877

880

883

886

889

892

895

898

901

904

907

910

913

916

919

922

925

928

931

934

937

940

943

946

949

952

955

958

961

964

967

970

973

976

979

982

985

988

991

994

997

1000

1003

1006

1009

1012

1015

1018

1021

1024

1027

1030

1033

1036

1039

1042

1045

1048

1051

1054

1057

1060

1063

1066

1069

1072

1075

1078

1081

1084

1087

1090

1093

1096

1099

1102

1105

1108

1111

1114

1117

1120

1123

1126

1129

1132

1135

1138

1141

1144

1147

1150

1153

1156

1159

1162

1165

1168

1171

1174

1177

1180

1183

1186

1189

1192

1195

1198

1201

1204

1207

1210

1213

1216

1219

1222

1225

1228

1231

1234

1237

1240

1243

1246

1249

1252

1255

1258

1261

1264

1267

1270

1273

1276

1279

1282

1285

1288

1291




1294

1297

1300

1303

Ordnance Survey and the OS Symbol are registered trademarks of Ordnance Survey, the national mapping agency of Great Britain. Buy A Plan logo, pdf design and the www.buyaplan.co.uk website are Copyright © Pass Inc Ltd 2021

Rev.	Date	Description	Notes
			<div> <div>  <p>Boundary Line</p> </div> <div>  </div> <div>  </div> </div>
			<div> <div> <p>PROJECT:</p> <p>CLIENT:</p> <p>DATE:</p> <p>SCALE:</p> <p>DRAWING:</p> <p>REFERENCE:</p> </div> <div> <p>Stratford Villas</p> <p>Nicola K. & Chris T.</p> <p>24.11.2021</p> <p>1:1250 @ A3</p> <p>Location Plan</p> <p>205-00-000</p> </div> <div> <p>PROJECT No:</p> <p>205</p> <p>ISSUE:</p> <p>-</p> </div> </div>
			<div> <div> <p>STATUS:</p> </div> <div> <p>PLANNING</p> </div> <div> <p>T +44 (0)7927755317 www.eb-ba.co</p> </div> </div>
			<div> <p>• ALL CO-ORDINATES, LEVELS, DIMENSIONS AND DISCREPANCIES ARE TO BE REPORTED TO THE ARCHITECT IMMEDIATELY</p> <p>• ALL STRUCTURAL ELEMENTS ARE TO BE DESIGNED BY THE STRUCTURAL ENGINEER</p> <p>• ALL DRAWINGS TO BE READ IN CONJUNCTION WITH ARCHITECTURAL SPECIFICATION</p> <p>• DO NOT SCALE FROM THESE DRAWINGS, USE FIGURED DIMENSIONS ONLY</p> </div>



Rev.	Date	Description	Notes			
			<div>• ALL CO-ORDINATES, LEVELS, DIMENSIONS AND DISCREPANCIES ARE TO BE REPORTED TO THE ARCHITECT IMMEDIATELY</div> <div>• ALL STRUCTURAL ELEMENTS ARE TO BE DESIGNED BY THE STRUCTURAL ENGINEER</div> <div>• ALL DRAWINGS TO BE READ IN CONJUNCTION WITH ARCHITECTURAL SPECIFICATION</div> <div>• DO NOT SCALE FROM THESE DRAWINGS, USE FIGURED DIMENSIONS ONLY</div>	<div><div><div><div></div><div>Boundary Line</div></div><div><div>0</div><div>25</div><div>50m</div></div><div><div></div></div></div></div>		
			<div><div><div>PROJECT:</div><div>CLIENT:</div><div>DATE:</div><div>SCALE:</div><div>DRAWING:</div><div>REFERENCE:</div><div>STATUS:</div></div><div><div>Stratford Villas</div><div>Nicola K. & Chris T.</div><div>24.11.2021</div><div>1:500 @ A3</div><div>Site Plan</div><div>205-00-001</div><div>PLANNING</div></div><div><div>PROJECT No:</div><div>205</div><div>ISSUE:</div><div>-</div><div>T +44 (0)7927755317 www.eb-ba.co</div></div><div>EBBA</div></div>			

Entry and steps into the Lower Ground Floor are to be demolished and redesigned to allow for a bigger entrance door

Hallway

Sitting Room

Living

Bathroom

Balcony

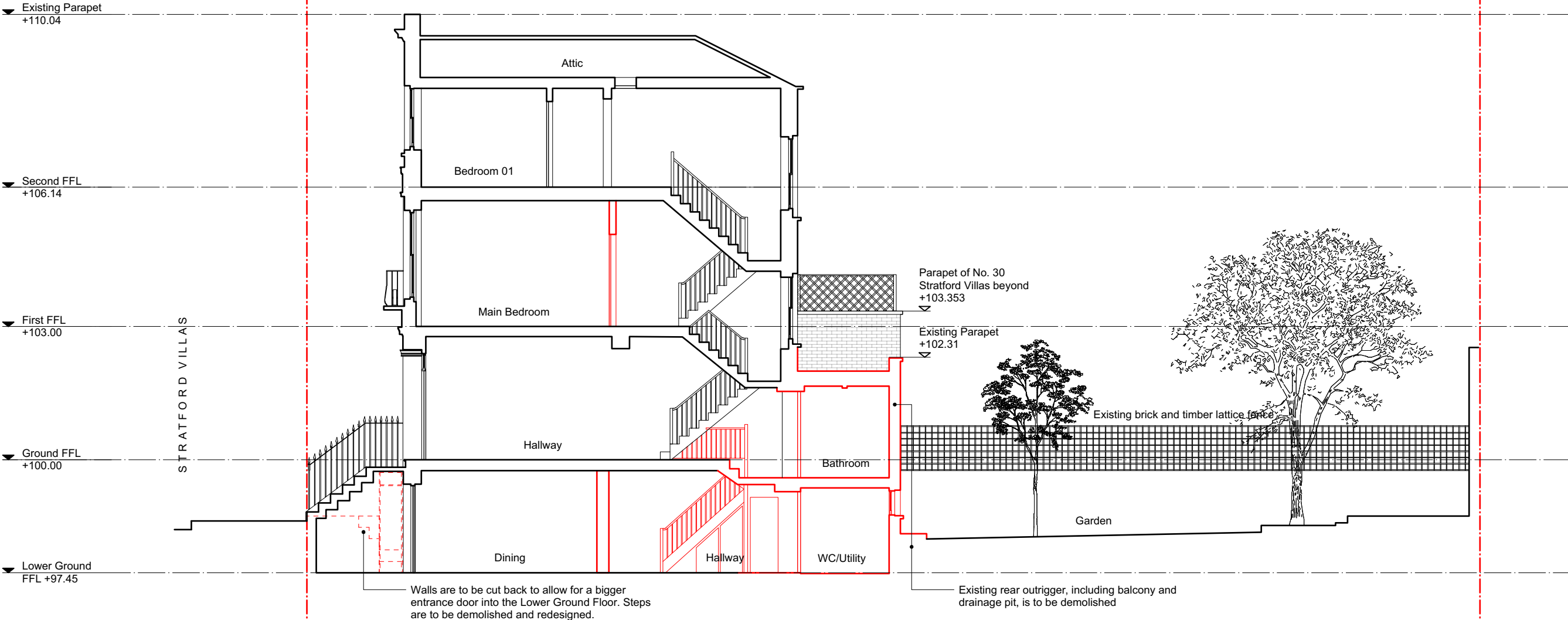
Rear outrigger and balcony are to be demolished

Existing door and extent of rear walls are to be demolished

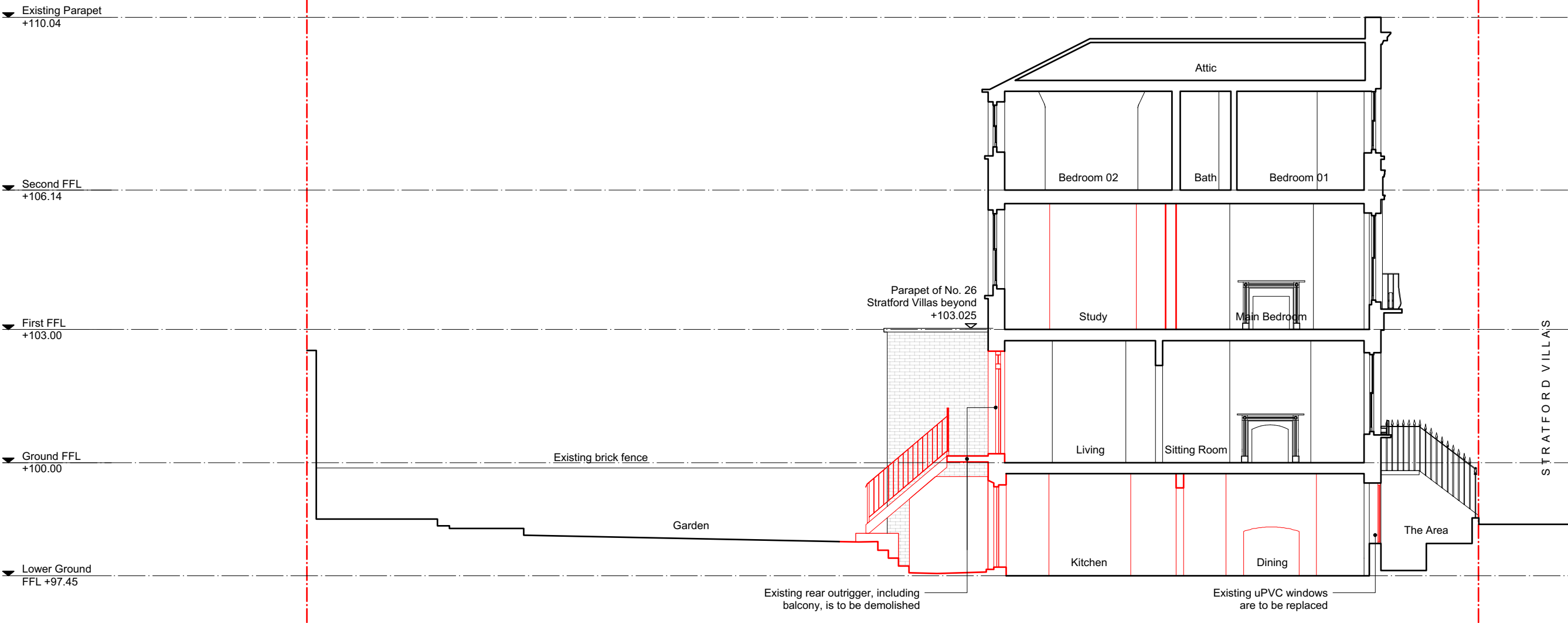
A

B

Rev.	Date	Description	Notes
			<div>• ALL CO-ORDINATES, LEVELS, DIMENSIONS AND DISCREPANCIES ARE TO BE REPORTED TO THE ARCHITECT IMMEDIATELY</div> <div>• ALL STRUCTURAL ELEMENTS ARE TO BE DESIGNED BY THE STRUCTURAL ENGINEER</div> <div>• ALL DRAWINGS TO BE READ IN CONJUNCTION WITH ARCHITECTURAL SPECIFICATION</div> <div>• DO NOT SCALE FROM THESE DRAWINGS. USE FIGURED DIMENSIONS ONLY</div>
			<div><div><div><div><div></div></div><div>Boundary Line</div></div><div><div><div><div></div></div><div>0</div></div><div><div><div></div></div><div>1</div></div><div><div><div></div></div><div>2m</div></div></div></div><div><div><div></div></div><div><div></div></div></div></div>
			<div><div><div><div><div></div></div><div>PROJECT: CLIENT:</div></div><div><div>Stratford Villas Nicola K. & Chris T.</div></div></div><div><div><div><div></div></div><div>DATE: SCALE:</div></div><div><div>24.11.2021 1:50 @ A3</div></div></div><div><div><div><div></div></div><div>DRAWING: REFERENCE:</div></div><div><div>Existing Ground Floor Plan 205-00-011</div></div></div></div> <div><div><div><div></div></div><div>STATUS:</div></div><div><div>PLANNING</div></div></div> <div><div><div><div></div></div><div>PROJECT No: 205</div></div><div><div>EBBA</div></div></div> <div><div><div><div></div></div><div>ISSUE: ■</div></div><div><div>T +44 (0)7927755317 www.eb-ba.co</div></div></div>



Rev.	Date	Description	Notes			
			<div>• ALL CO-ORDINATES, LEVELS, DIMENSIONS AND DISCREPANCIES ARE TO BE REPORTED TO THE ARCHITECT IMMEDIATELY</div> <div>• ALL STRUCTURAL ELEMENTS ARE TO BE DESIGNED BY THE STRUCTURAL ENGINEER</div> <div>• ALL DRAWINGS TO BE READ IN CONJUNCTION WITH ARCHITECTURAL SPECIFICATION</div> <div>• DO NOT SCALE FROM THESE DRAWINGS, USE FIGURED DIMENSIONS ONLY</div>	<div>--- Boundary Line</div> <div><div></div><div>0</div><div>2</div><div>4m</div></div>		
				<div>PROJECT: Stratford Villas</div> <div>CLIENT: Nicola K. & Chris T.</div> <div>DATE: 24.11.2021</div> <div>SCALE: 1:100 @ A3</div> <div>DRAWING: Existing Section A</div> <div>REFERENCE: 205-00-030</div> <div>STATUS: PLANNING</div>		
				<div>PROJECT No: 205</div> <div>EBBA</div> <div>ISSUE: -</div> <div>T +44 (0)7927755317 www.eb-ba.co</div>		



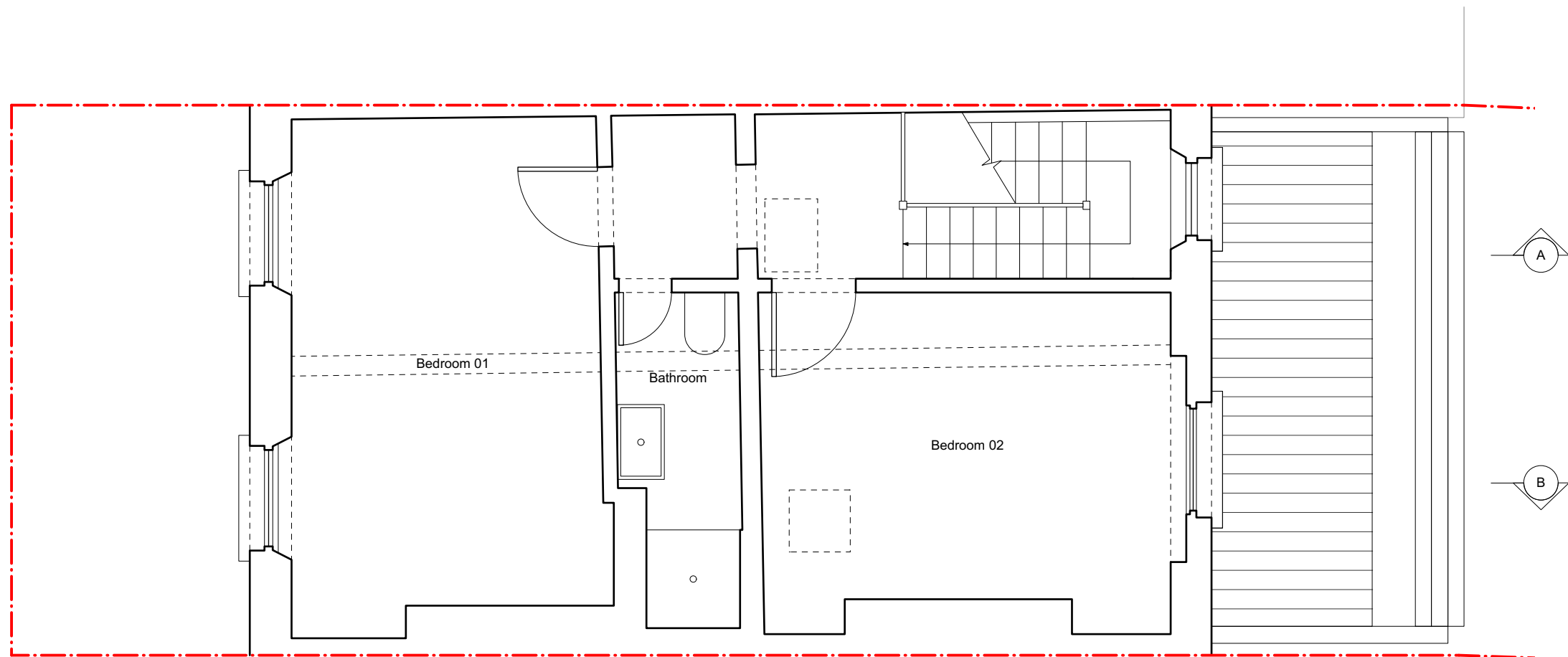
Rev.	Date	Description	Notes			
			<div>• ALL CO-ORDINATES, LEVELS, DIMENSIONS AND DISCREPANCIES ARE TO BE REPORTED TO THE ARCHITECT IMMEDIATELY</div> <div>• ALL STRUCTURAL ELEMENTS ARE TO BE DESIGNED BY THE STRUCTURAL ENGINEER</div> <div>• ALL DRAWINGS TO BE READ IN CONJUNCTION WITH ARCHITECTURAL SPECIFICATION</div> <div>• DO NOT SCALE FROM THESE DRAWINGS, USE FIGURED DIMENSIONS ONLY</div>	<div><div>--- Boundary Line</div><div><div>0</div><div>2</div><div>4m</div></div></div>		
				<div>PROJECT: CLIENT: DATE: SCALE: DRAWING: REFERENCE: STATUS:</div>	<div>Stratford Villas Nicola K. & Chris T. 24.11.2021 1:100 @ A3 Existing Section B 205-00-031 PLANNING</div>	<div>PROJECT No: 205 ISSUE: - T +44 (0)7927755317 www.eb-ba.co</div>

Architectural floor plan of the first floor of Stratford Villas. The plan shows a central hallway connecting a sitting room, living room, study, and a void. A proposed entry and steps lead into the lower ground floor. A red dashed line indicates the boundary of the proposed rear addition, which includes an operable metal window insert. Section lines A-A and B-B are marked.

Labels on the plan include:

- STRATFORD VILLAS
- Proposed entry and steps into the Lower Ground Floor
- Hallway
- Sitting Room
- Living
- Study
- Void
- Operable metal window insert to the glazed proposed rear addition
- A
- B

Rev.	Date	Description	Notes
			<div> Boundary Line </div> <div> </div> <div> <ul style="list-style-type: none"> • ALL CO-ORDINATES, LEVELS, DIMENSIONS AND DISCREPANCIES ARE TO BE REPORTED TO THE ARCHITECT IMMEDIATELY • ALL STRUCTURAL ELEMENTS ARE TO BE DESIGNED BY THE STRUCTURAL ENGINEER • ALL DRAWINGS TO BE READ IN CONJUNCTION WITH ARCHITECTURAL SPECIFICATION • DO NOT SCALE FROM THESE DRAWINGS. USE FIGURED DIMENSIONS ONLY </div>
			<div> PROJECT: Stratford Villas CLIENT: Nicola K. & Chris T. DATE: 24.11.2021 SCALE: 1:50 @ A3 DRAWING: Proposed Ground Floor Plan REFERENCE: 205-00-101 </div> <div> STATUS: PLANNING </div> <div> PROJECT No: EBBA 205 ISSUE: - T +44 (0)7927755317 www.eb-ba.co </div>



Rev.	Date	Description	Notes
			<div style="text-align: center;"> Boundary Line </div> <div style="text-align: center;"> </div> <div style="text-align: right;"> </div>
			<ul style="list-style-type: none"> - ALL CO-ORDINATES, LEVELS, DIMENSIONS AND DISCREPANCIES ARE TO BE REPORTED TO THE ARCHITECT IMMEDIATELY - ALL STRUCTURAL ELEMENTS ARE TO BE DESIGNED BY THE STRUCTURAL ENGINEER - ALL DRAWINGS TO BE READ IN CONJUNCTION WITH ARCHITECTURAL SPECIFICATION - DO NOT SCALE FROM THESE DRAWINGS, USE FIGURED DIMENSIONS ONLY

PROJECT:

CLIENT:

DATE:

SCALE:

DRAWING:

REFERENCE:

STATUS:

Stratford Villas
Nicola K. & Chris T.

24.11.2021
1:50 @ A3

Proposed Second Floor Plan
205-00-103

PLANNING

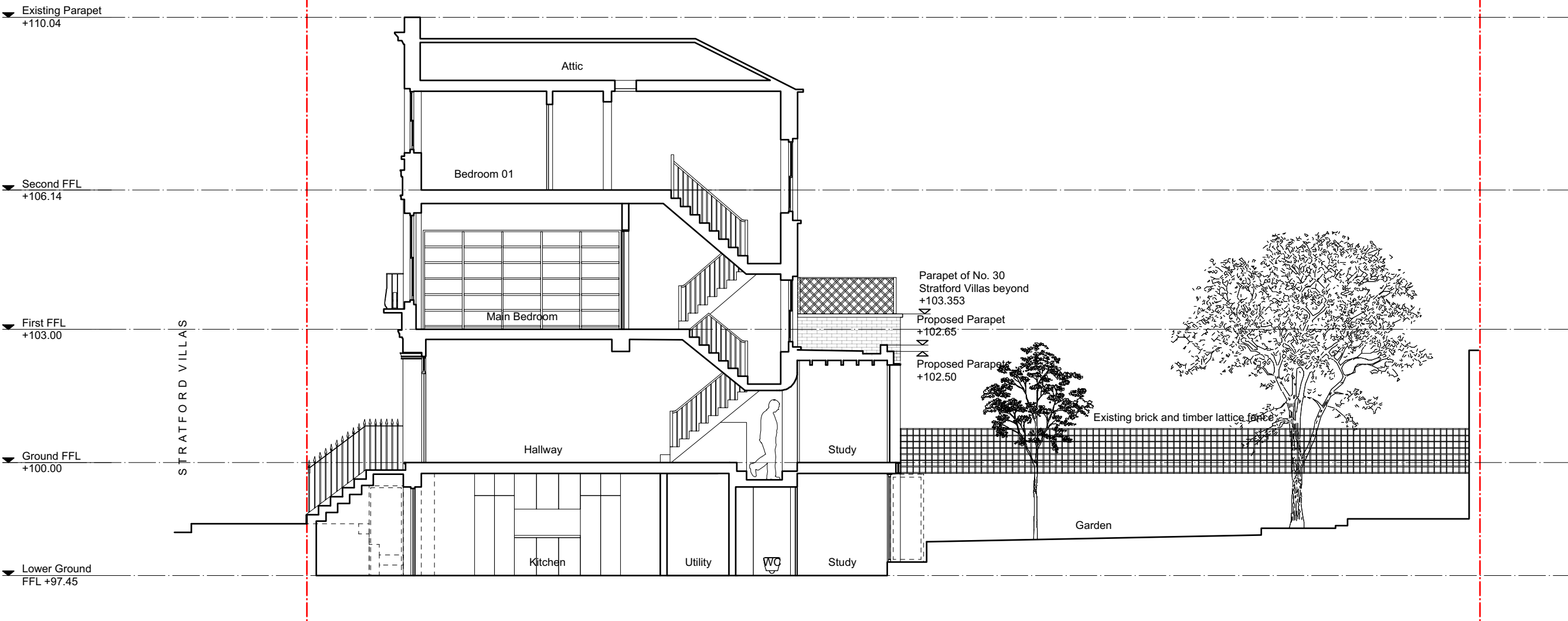
PROJECT No:

205

ISSUE:

I

T +44 (0)7927755317 | www.eb-ba.co



Rev.	Date	Description	Notes										
			<div>• ALL CO-ORDINATES, LEVELS, DIMENSIONS AND DISCREPANCIES ARE TO BE REPORTED TO THE ARCHITECT IMMEDIATELY</div> <div>• ALL STRUCTURAL ELEMENTS ARE TO BE DESIGNED BY THE STRUCTURAL ENGINEER</div> <div>• ALL DRAWINGS TO BE READ IN CONJUNCTION WITH ARCHITECTURAL SPECIFICATION</div> <div>• DO NOT SCALE FROM THESE DRAWINGS, USE FIGURED DIMENSIONS ONLY</div>	<div><div><div></div><div></div><div></div><div></div><div></div></div><div>Boundary Line</div></div>		<div>PROJECT: CLIENT: DATE: SCALE: DRAWING: REFERENCE:</div>		<div>Stratford Villas Nicola K. & Chris T. 24.11.2021 1:100 @ A3 Proposed Section A 205-00-301</div>		<div>PROJECT No: 205 ISSUE: -</div>		<div>EBBA</div>	
				<div><div><div></div><div></div><div></div><div></div><div></div></div><div>024m</div></div>		<div>STATUS:</div>		<div>PLANNING</div>		<div>T +44 (0)7927755317 www.eb-ba.co</div>			

