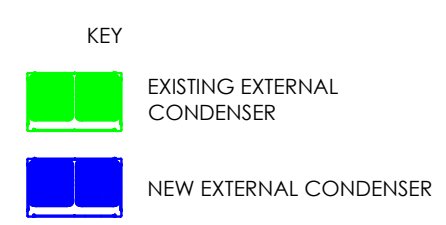
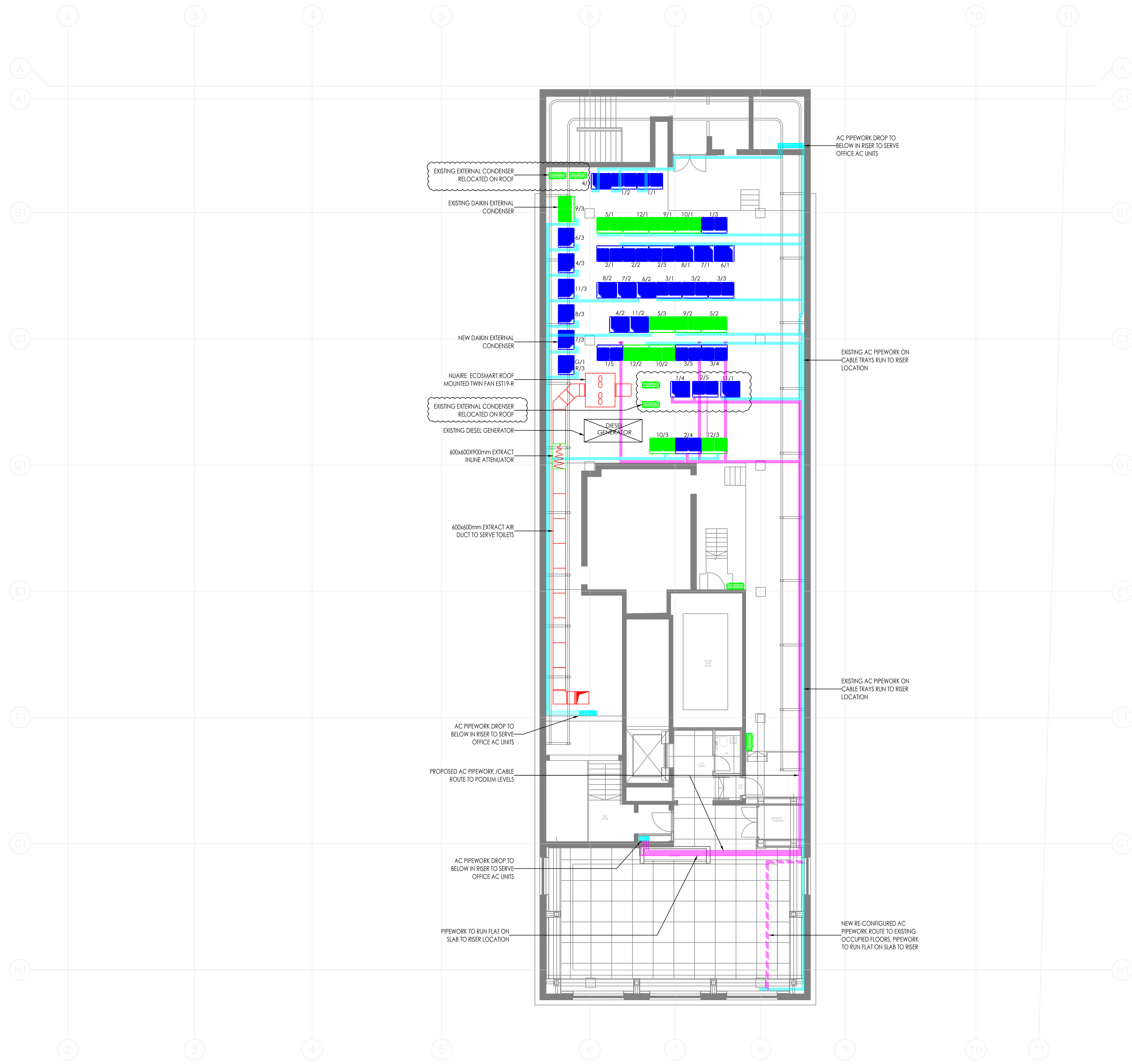


NOTES

1. HVAC EQUIPMENT AND DUCTWORK CAREFULLY CO-ORDINATED WITH HOT & COLD WATER AND SOIL & WASTE PIPEWORK, THE SVP HAS BEEN ALLOCATED A CLEAR CENTRAL ZONE
2. THE KITCHEN SERVICES ARE TO BE CO-ORDINATED WITH THE CATERING CONTRACTORS REQUIREMENTS
3. THE KITCHEN EXTRACT AIR VENTILATION DUCTWORK SHALL BE FIRE RATED THROUGHOUT TO THE SPECIFICATION REQUIREMENTS AND ACCESS HATCHES SHALL BE PROVIDED AT THE SPECIFIED DISTANCES ALONG THE LENGTH OF THE DUCTWORK SYSTEM. THE KITCHEN SUPPLY AIR SYSTEM WILL BE COMPLETE WITH SMOKE DAMPERS AT ANY FIRE RATED BARRIER WITH INTERFACE TO THE FIRE ALARM SYSTEM.
4. THE PLANT ROOM AND TANK ROOM DOORS ARE TO BE LOUVRE TYPE WITH INSECT SCREEN



T2	TENDER ISSUE - EXTERNAL CONDENSER RELOCATED TO CLEAR PROPOSED WALK WAY ROUTE	TT	STEP 2021
T1	TENDER ISSUE	WHG	MAR 2021

Revisions	Description	Ref	Eng	Date
-----------	-------------	-----	-----	------

mechanical and electrical consulting engineers

UNIT 5 HOWARTH COURT, GATEWAY CRESCENT, OLDHAM BROADWAY BUSINESS PARK, CHADDERTON, OL9 9XB
Tel: 0161 681 7070 Email: mail@gipartnership.co.uk

Client LAZARI INVESTMENTS LIMITED

Project Title THE MET BUILDING LONDON

Drawing Title TOWER ROOF LEVEL MECHANICAL SERVICES LAYOUT

In Association with

Drawn by WHG **Scales** 1:100@A1
Checked by PTK **Date** FEBRUARY 2021 **(work to figured dimensions)**

DRG No. 1462-400-10 **Rev.** T2