



Photo of Air Cooling units to rear of 98 Hatton Gardens



Photo of Air Cooling units in internal courtyard to back of 98 Hatton Garden.

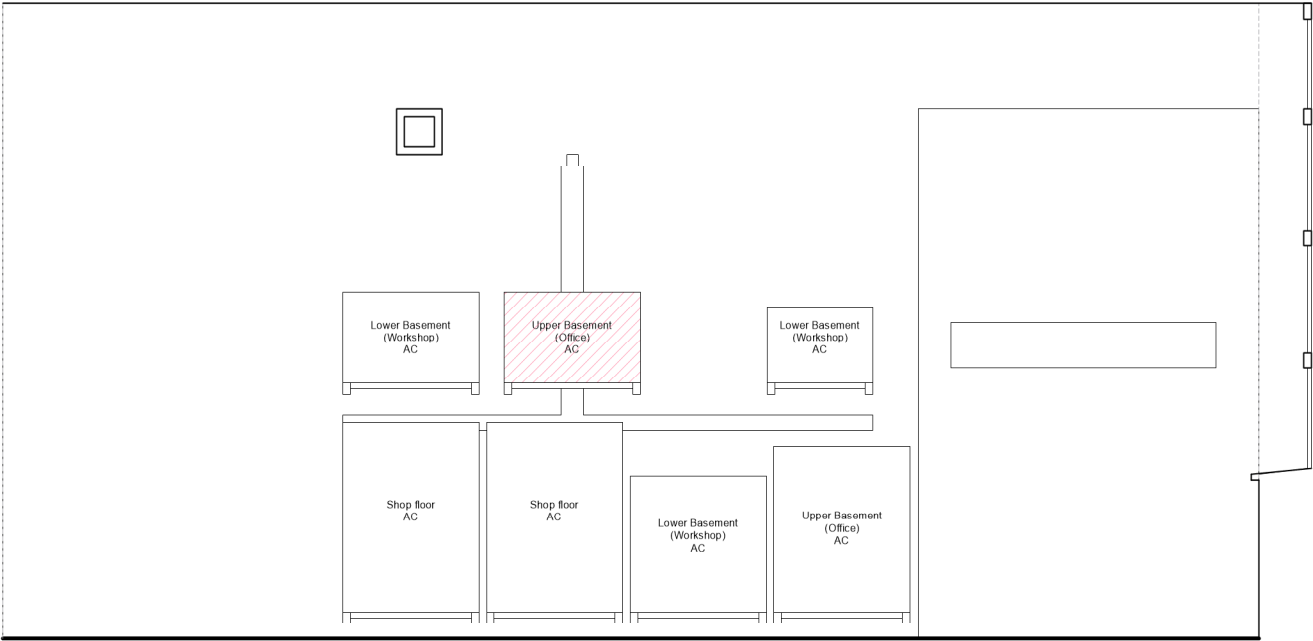
Icon	Descriptor	Location Description
	Noise Measurement Position	The microphone was installed on an office window on the 1st floor of the 98 Hatton Garden rear façade. A correction of 3dB has been applied to account for non-free field conditions
	Closest Noise Sensitive Receiver	The closest noise sensitive receiver has been identified as a south-facing 1 st floor residential window to the north of the proposed plant installation
	Proposed Plant Installation Location	The proposed plant installation is outlined in Section 5.1

Table 2.1 Measurement position and description



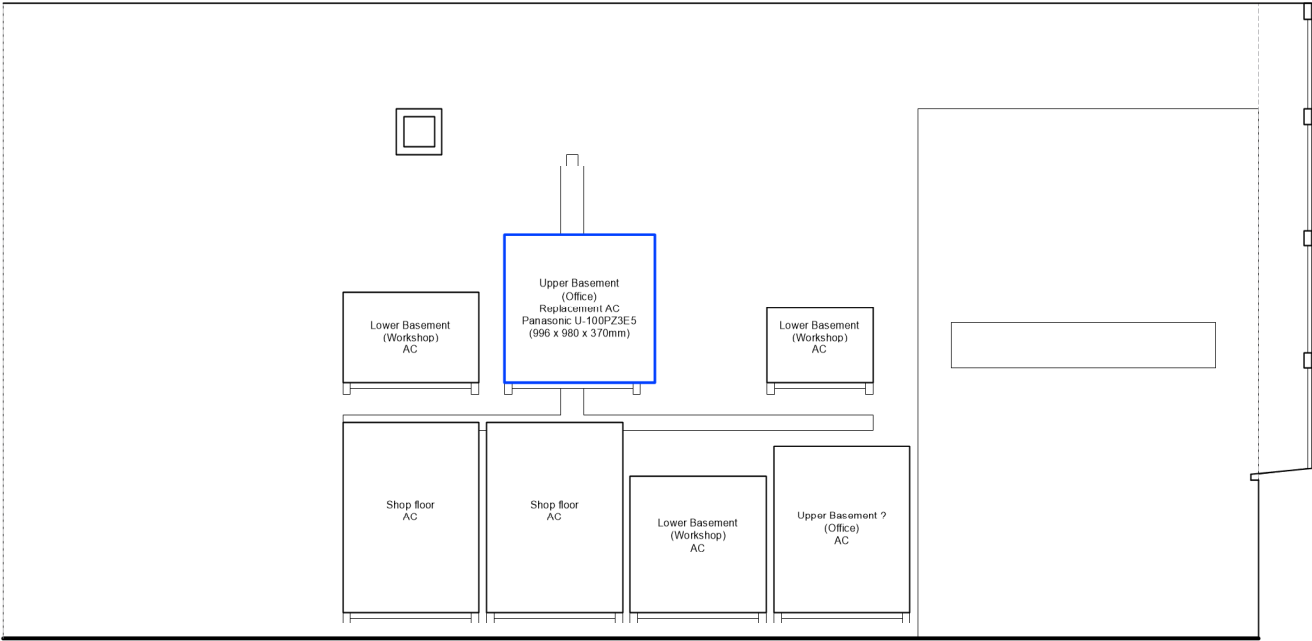
Figure 2.2 Site measurement position, identified receiver and proposed plant unit installation (Image Source: Google Maps)

Extract from Planning Compliance Report (23582.PCR.01) from KP Acoustics showing location of testing equipment and AC unit location to be replaced.



Existing rear elevation of AC units in internal courtyard to back of 98 Hatton Garden.

1:50 Scale



Proposed rear elevation location of AC unit in internal courtyard to back of 98 Hatton Garden.

1:50 Scale