



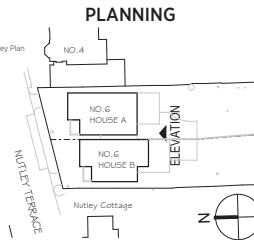
General notes:
This drawing is copyright of KSR architects. This drawing must be read in conjunction with the Designer's Risk Assessment, specification and all other relevant documentation and drawings. KSR architects accept no liability for any expense, loss or damage of whatsoever nature and however arising from any variation made to this drawing or in the execution of the work to which it relates which has not been referred to them and their approval obtained.
Do not scale from this drawing or the digital data, only figured dimensions are to be used. For Planning refer to linear scale.
Check all dimensions on site prior to carrying out any work to avoid any discrepancy

KEYNOTE (MATERIAL REFERENCE)

- A FACE MASONRY
- B GUAGED BRICKWORK
- C FAIR FACE BRICKWORK
- D BRICK WALLING
- E CAST STONE COPING
- F CAST STONE DETAILS
- G LEAD LINED DORMER
- H SLATE TILE ROOFING
- J HARDWOOD TIMBER DOOR
- K POWDER COATED METAL RAILING
- L TIMBER GATE/FENCE
- M DOUBLE GLAZED TIMBER SASH WINDOW
- N DOUBLE GLAZED TIMBER DOOR
- P PRIVACY SCREEN

Rev	Description	Date	Child
P4	Minor Material Amendment Application	20.06.18	DC
P3	Minor Material Amendment Application	09.02.18	DC
P2	Entrance canopy design change (House A)	20.07.12	RS
P1	Planning Application Submission	08.05.12	RS

© KSR Architects
Stamp



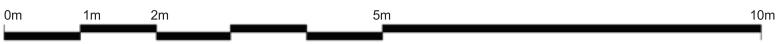
KSRARCHITECTS
KSR Architects LLP
14 Gower Street
London WC1E 6BT
t +44 (0)20 7882 5500
e mail@ksrarchitects.com
www.ksrarchitects.com

Project:
6 NUTLEY TERRACE

Title:
PROPOSED REAR (SOUTH) ELEVATION

Date: FEB 2018	Drawn By: RL	Checked: DC
Scale:	Status:	

Project Ref: NUT	Drawing No: 013	Revision: P4
----------------------------	---------------------------	------------------------



GRAPHIC SCALE

PROPOSED REAR (SOUTH) ELEVATION