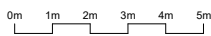
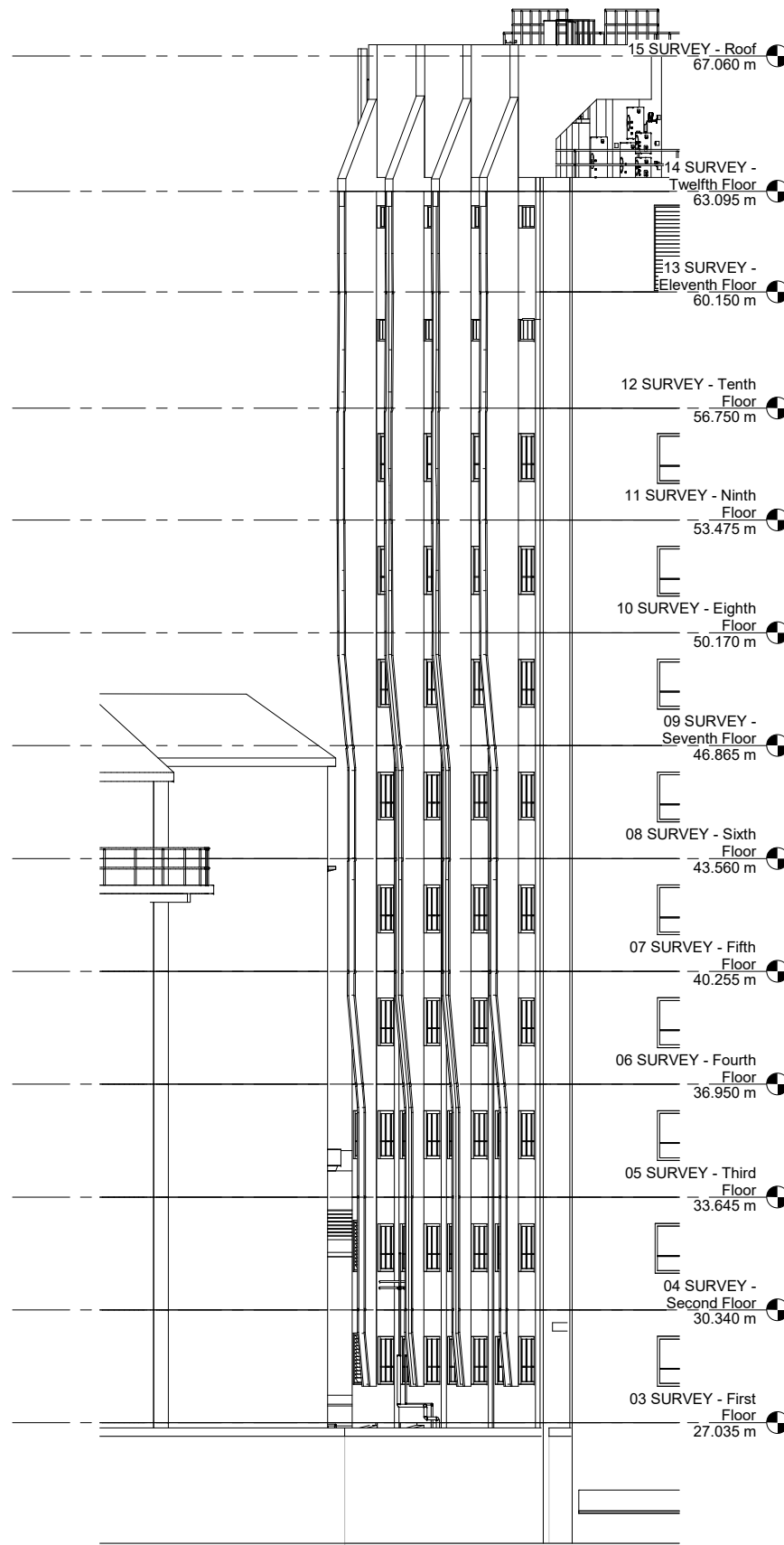




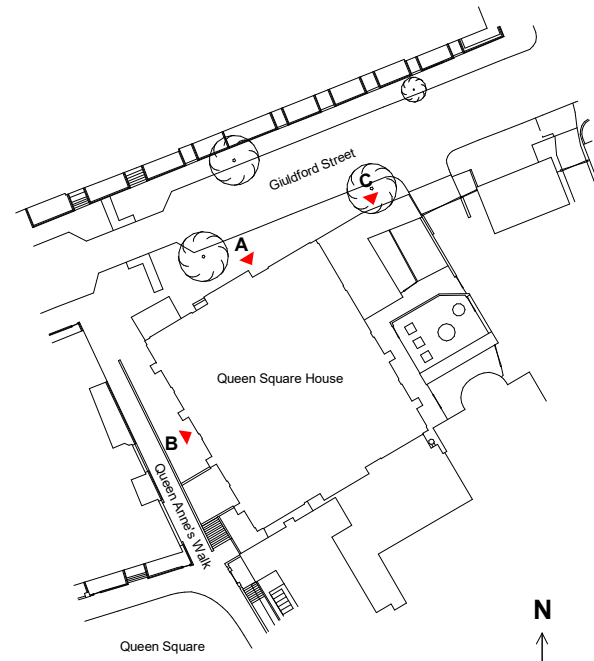
A Elevation A - Proposed
1 : 100



B Elevation B - Proposed
1 : 100



C Elevation C - Proposed
1 : 100
(tree omitted from view for clarity)



X Key Plan
1 : 500

WILSON MASON

Wilson Mason LLP - Chartered Architects
8, New Concordia Wharf, Mill Street, London SE1 2BB
T 020 7637 1501 - www.wilsonmason.co.uk

client UCL	project Ground Floor Refurbishments
drawing As indicated at a0	North and West Elevations - Proposed
rev Tender Issue	6773- L(2)-15 P01