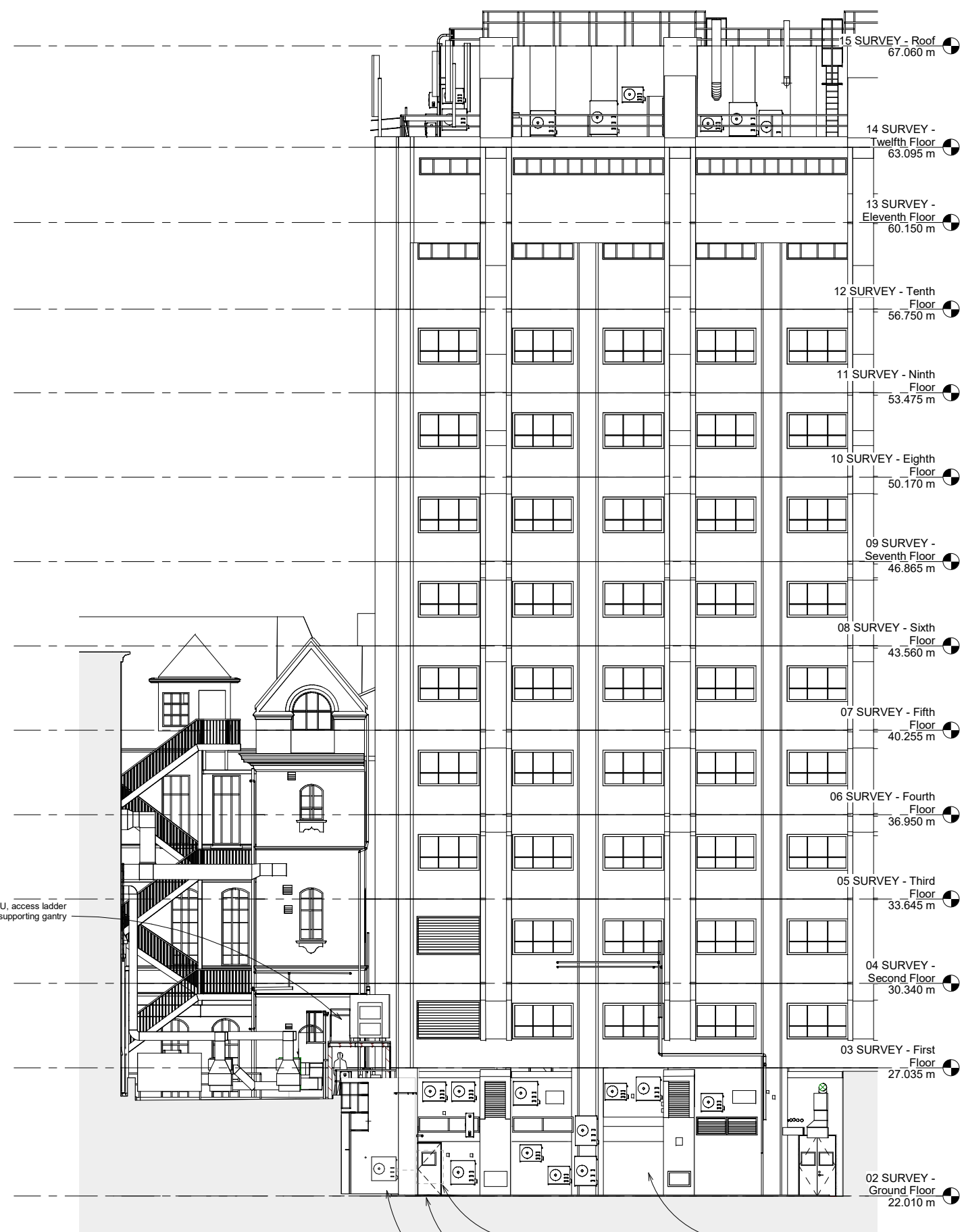
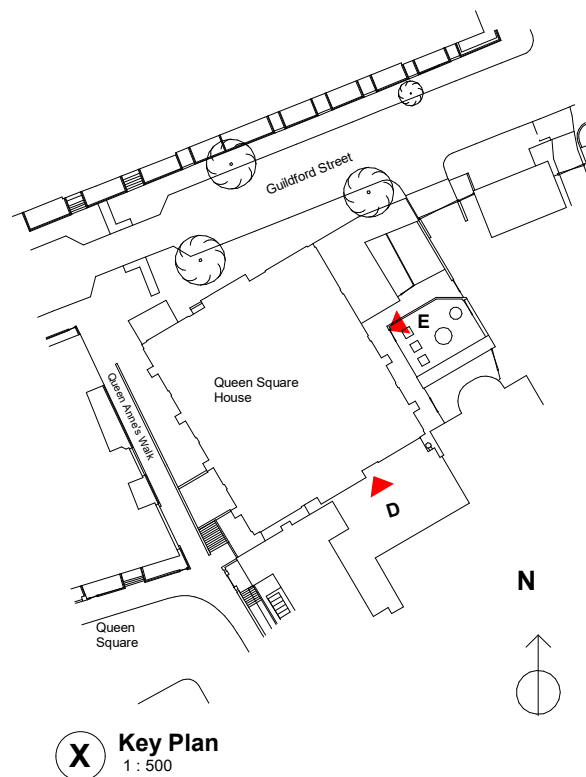


D South Section / Elevation D - Existing_
1 : 100

0m 1m 2m 3m 4m 5m



E East Section / Elevation E - Proposed
1 : 100



X Key Plan
1 : 500

WILSON MASON

Wilson Mason LLP - Chartered Architects
8, New Concordia Wharf, Mill Street, London SE1 2BB
T 020 7637 1501 - www.wilsonmason.co.uk

client UCL	project Ground Floor Refurbishments
drawing As indicated at a0	South and East Elevations - Proposed
rev Tender Issue	rev P01

6773- L(2)-16