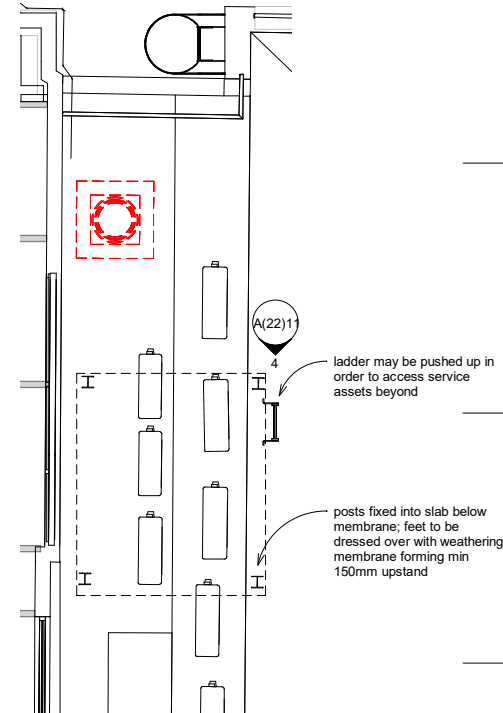
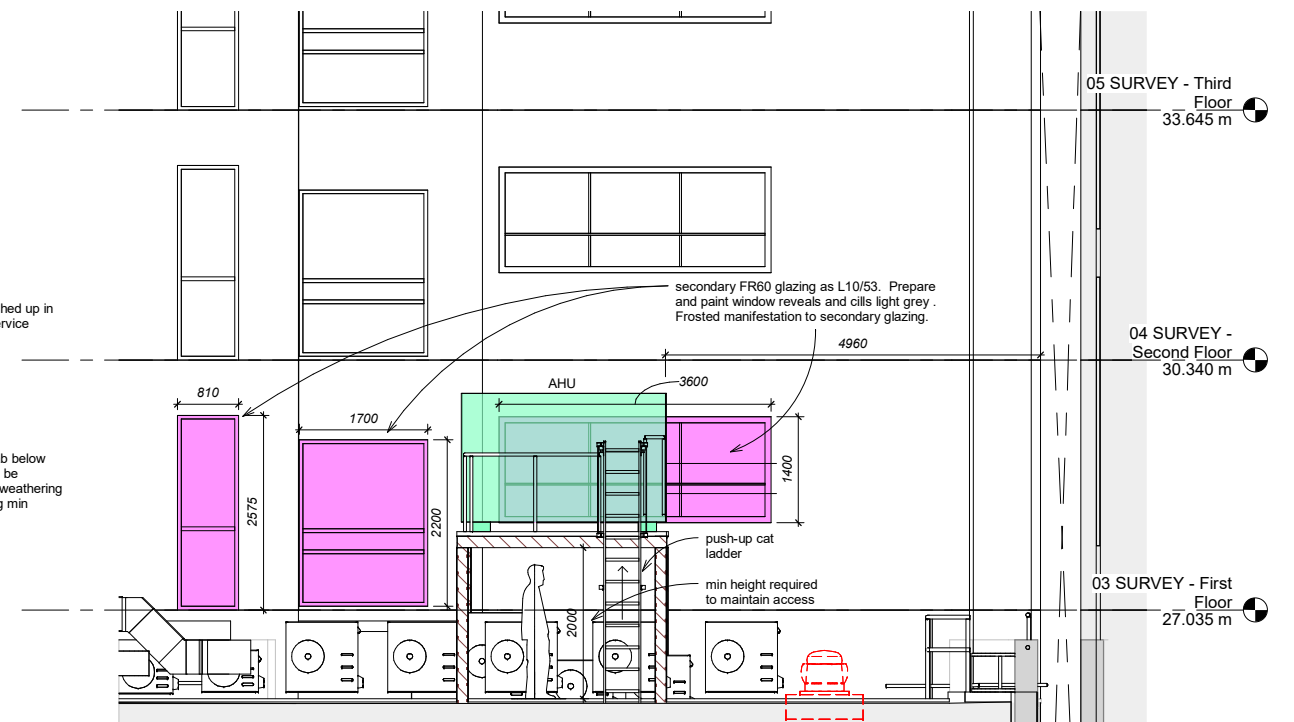


1 First Floor - Proposed AHU Location
1 : 50



2 Extract - Footing Locations
1 : 50

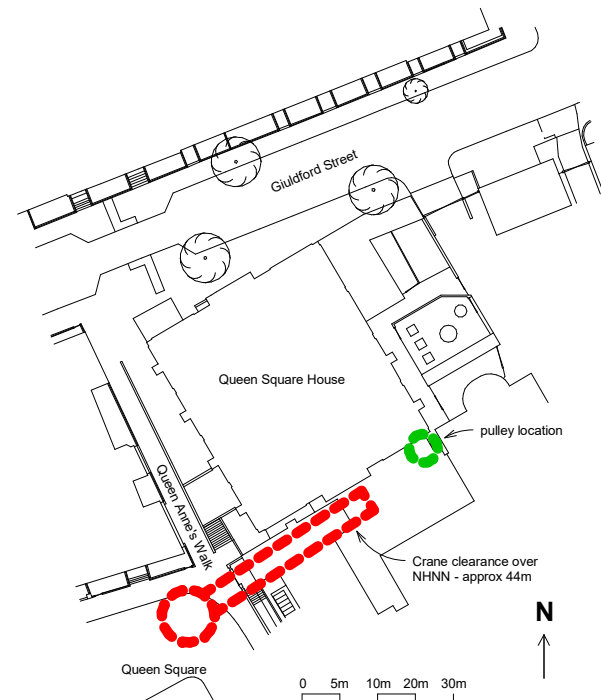
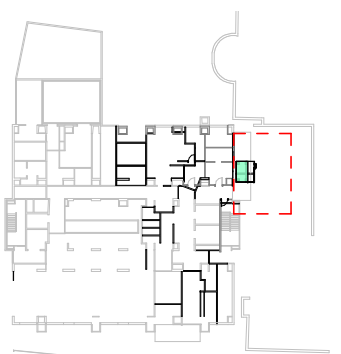


3 Elevation - Looking towards Queen Square House
1 : 50

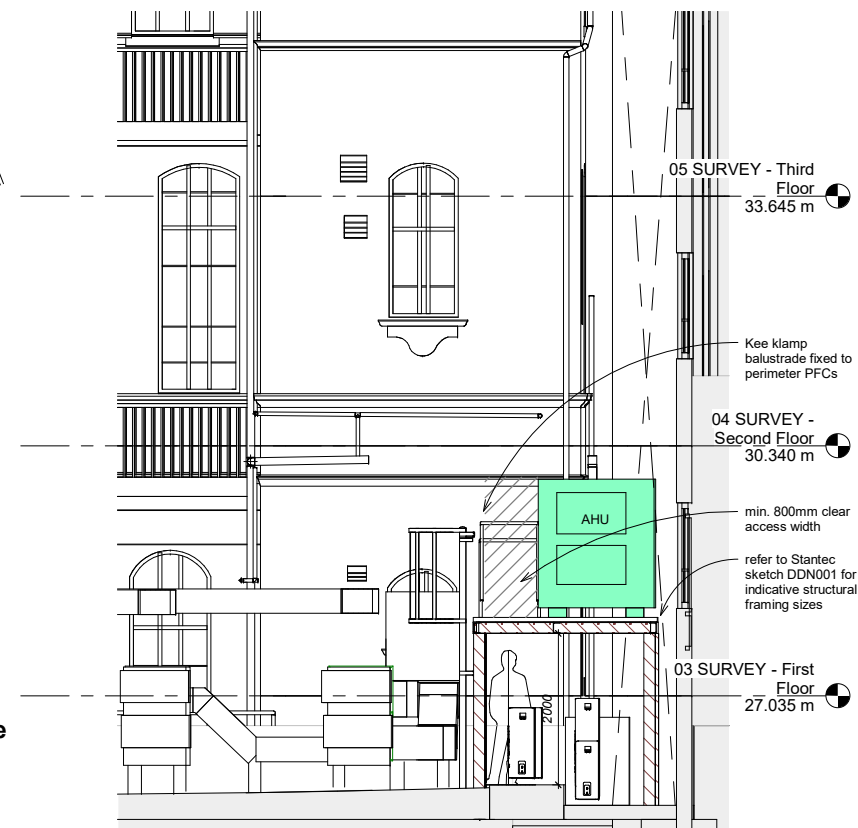
REFER TO DRAWING 1907-FM-242-01-DR-M-5700 FOR AHU CONFIGURATION AND DUCTWORK ROUTES

- Key**
- AHU
 - Min. 800mm wide access
 - FR60 secondary glazing as L10/53
 - Repairs to existing membrane
 - Items to be removed/alttered
 - accessway (diagrammatic)

Key Plan



5 Crane and Hoist Locations for Maintenance
1 : 500



4 Elevation - Looking towards Queen Square
1 : 50

WILSON MASON

Wilson Mason LLP - Chartered Architects
8, New Concordia Wharf, Mill Street, London SE1 2BB
T 020 7637 1501 - www.wilsonmason.co.uk

client	UCL	project	Ground Floor Refurbishments
drawing	As indicated at a1	First Floor Proposed AHU Location	
Tender Issue	6773- A(22)11	P01	