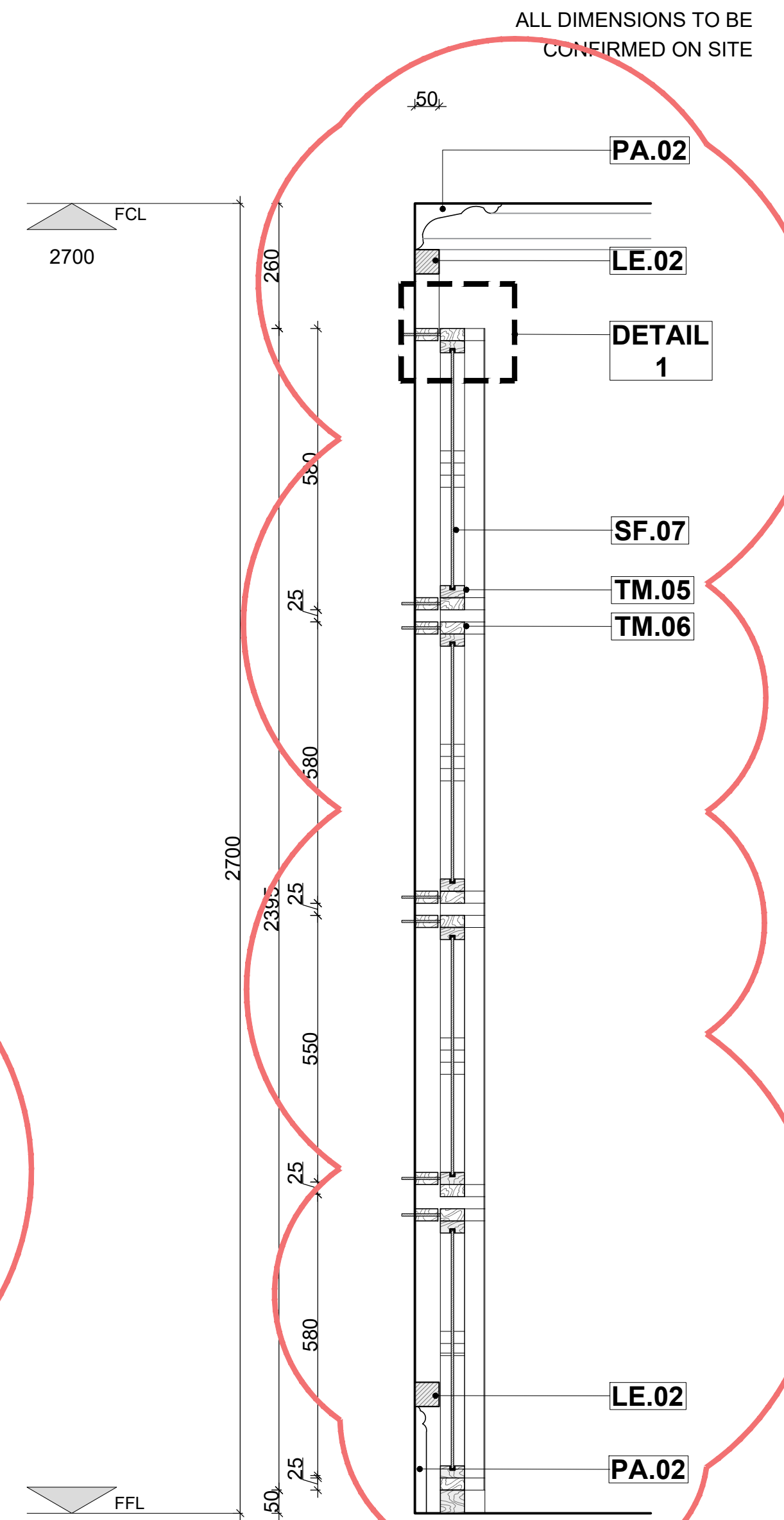
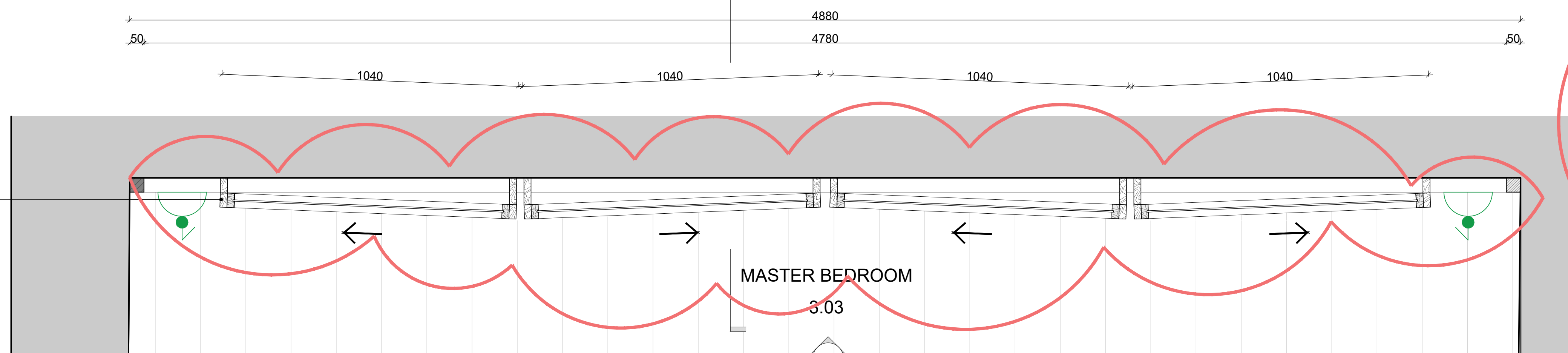


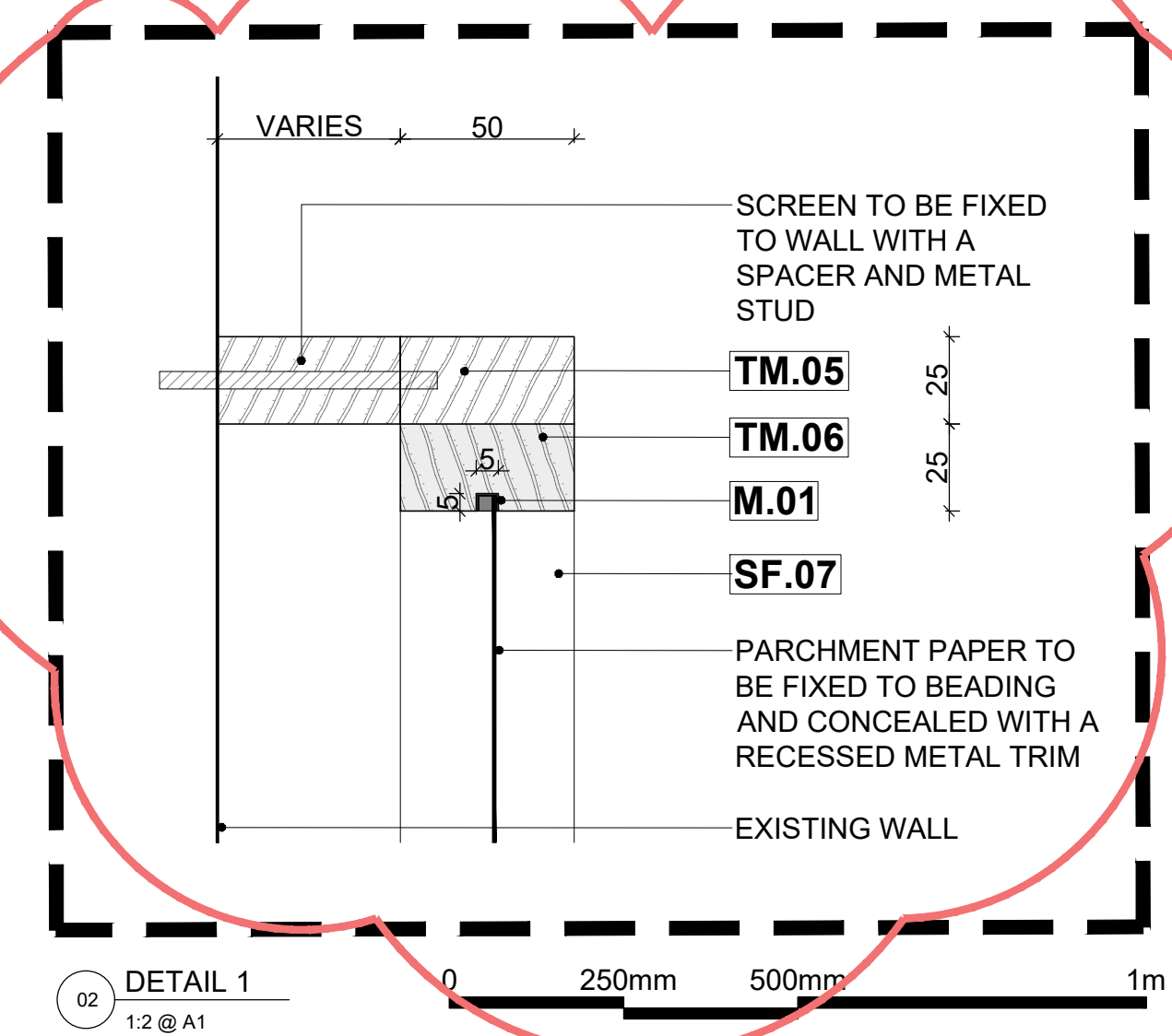
02 ELEVATION A
1:10 @ A1



02 SECTION A
1:10 @ A1



02 PLAN
1:10 @ A1



02 DETAIL 1
1:2 @ A1

PROJECT TITLE:
6 PRINCE ALBERT ROAD
REGENTS PARK
NW1

DRAWING TITLE:
MASTER BEDROOM
JO.13 - SCREEN
AS PROPOSED

PROJECT CODE:
761

DRAWN BY:
MA

CHECKED BY:
KH

ISSUED FOR:
ISSUED FOR TENDER

SCALE:
1:10 @ A1

DATE:
13.09.2021

DRAWING NO:
761_400_303_002

REVISION:
B

REV	BY	DATE	DESCRIPTION
A	MA	01.10.21	ISSUED FOR TENDER
B	MA	29.10.21	ISSUED FOR TENDER

DISCLAIMER:

In accordance with our duties under the Misrepresentation Act 1967 and the Mis-description Act 1991, these details have been prepared in good faith but are not intended to constitute part of an offer of contract or create any contractual relationship. No description or information of any kind provided by Elicyon or its Agents, whether written or verbal, contained in these Particulars or elsewhere ("Information") may be relied upon as a statement of representation, warranty or fact. Neither Elicyon nor its Agents have any authority to make any representation or warranty and accordingly any information is given entirely without responsibility on the part of Elicyon, its Agents or the seller. Any plans, photos, and computer generated images shown are indicative and cannot be guaranteed to represent the complete interiors/exteriors of a scheme. Any Areas, measurements or distances given are approximate only. It is not possible to scale from these drawings. Any reference to alterations to or use of any part of the property is not a statement that any necessary planning, building regulations or other consent has been obtained. These matters must be verified by any buyer/lessee. Any buyer/lessee must satisfy himself by inspection or otherwise as to the correctness of any information given. © All rights reserved to Elicyon London.

Elicyon Limited
First Floor, Avon House,
Avonmore Road, Kensington Village
London W14 8TS

Tel: +44 (0)203 772 0011

Web: www.elicyon.com
E-mail: studio@elicyon.com

ELICYON