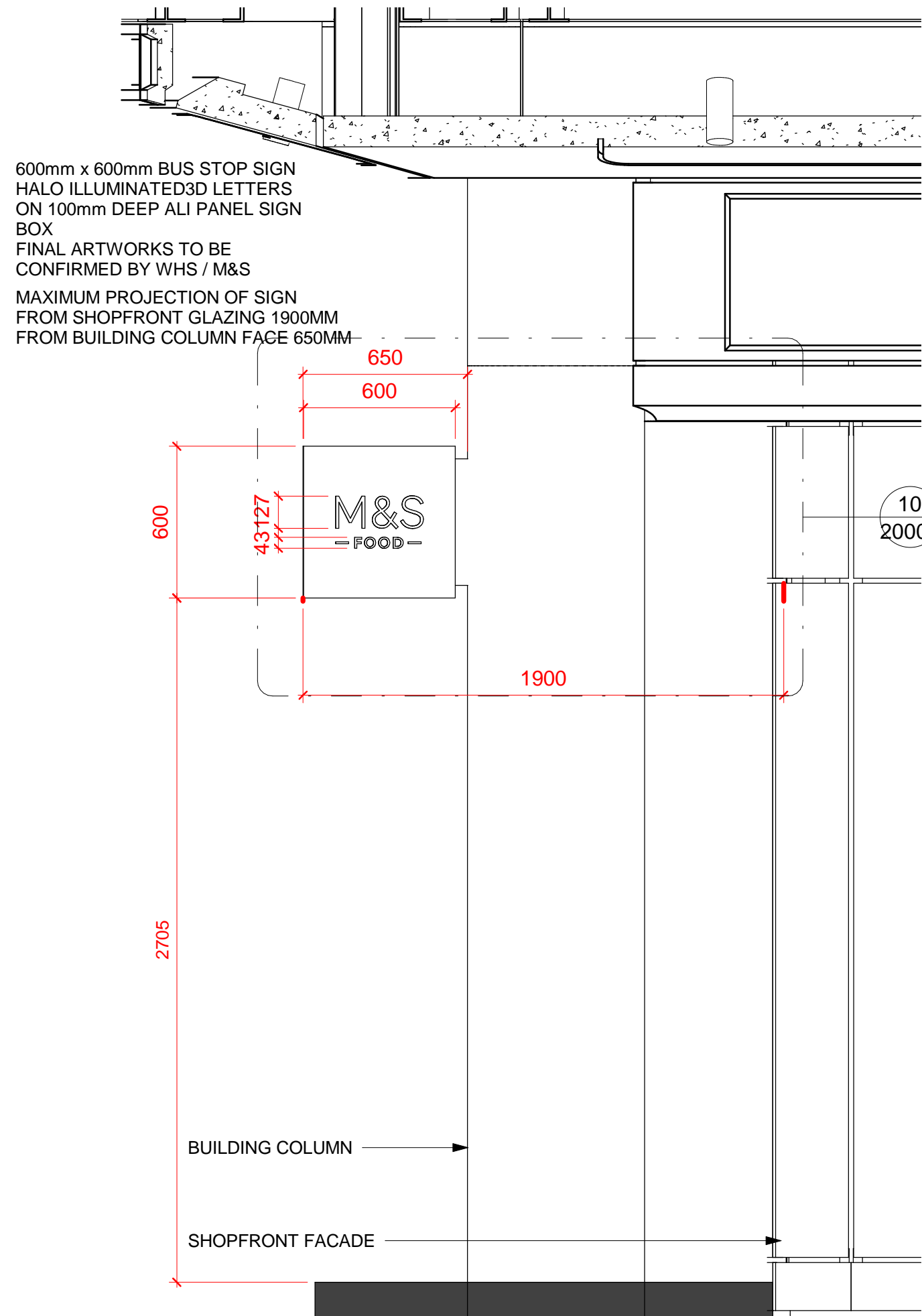
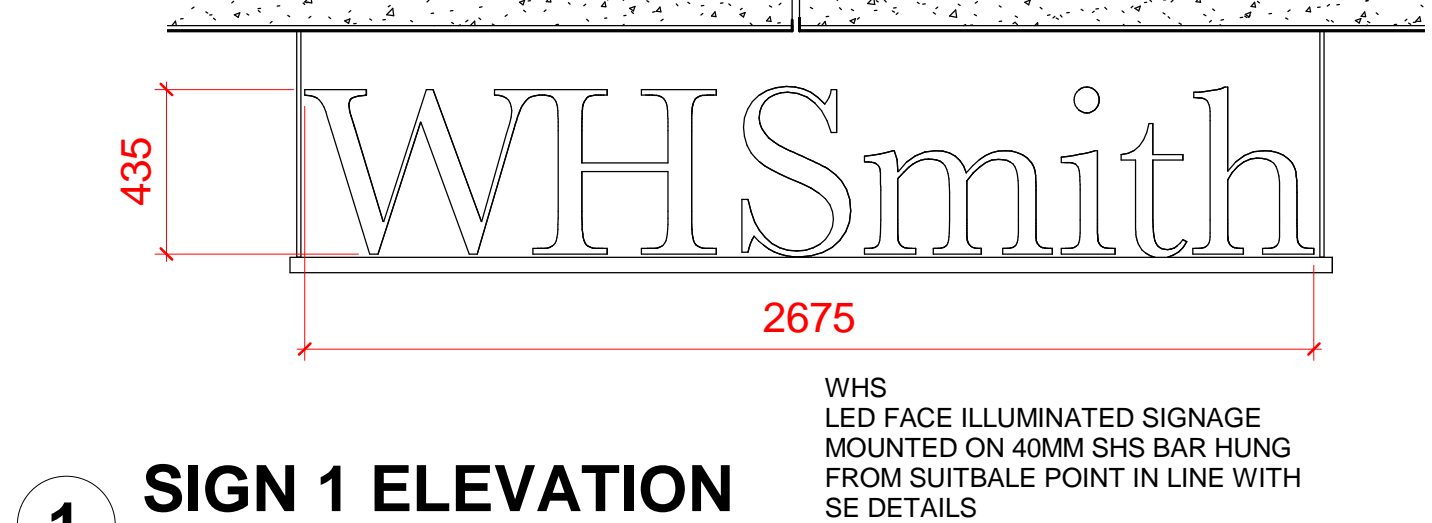


6 SIGN 6 Details  
1 : 20



7 SIGN 7 Details  
1 : 20



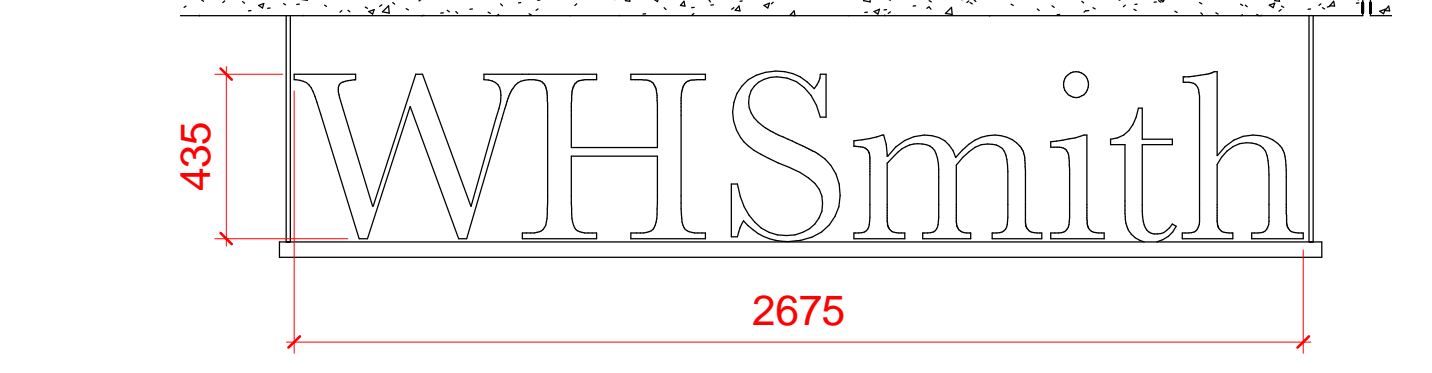
1 SIGN 1 ELEVATION  
1 : 20



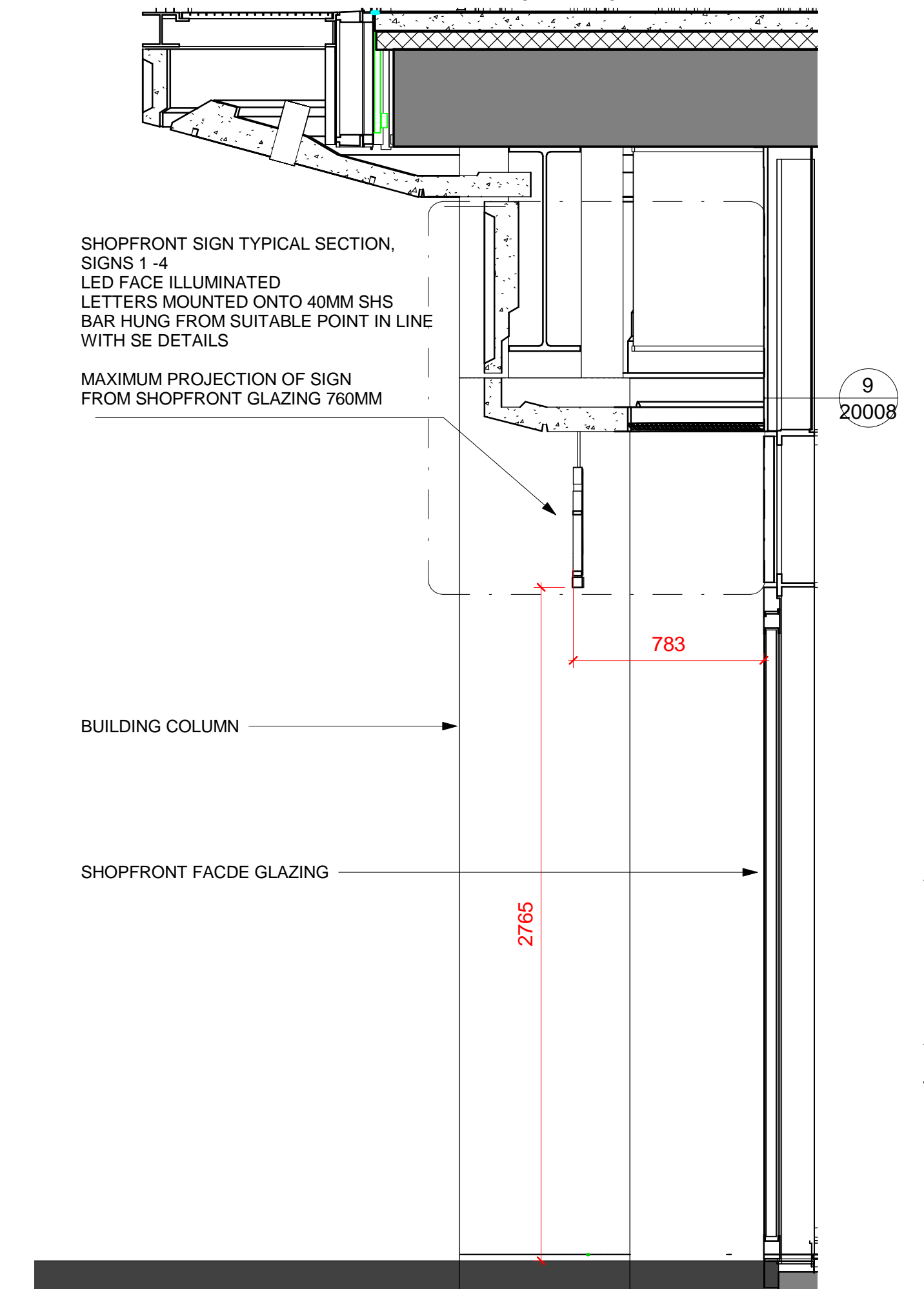
2 SIGN 2 ELEVATION  
1 : 20



3 SIGN 3 ELEVATION  
1 : 20



4 SIGN 4 ELEVATION  
1 : 20



8 SHOPFRONT SIGN SECTION  
1 : 20

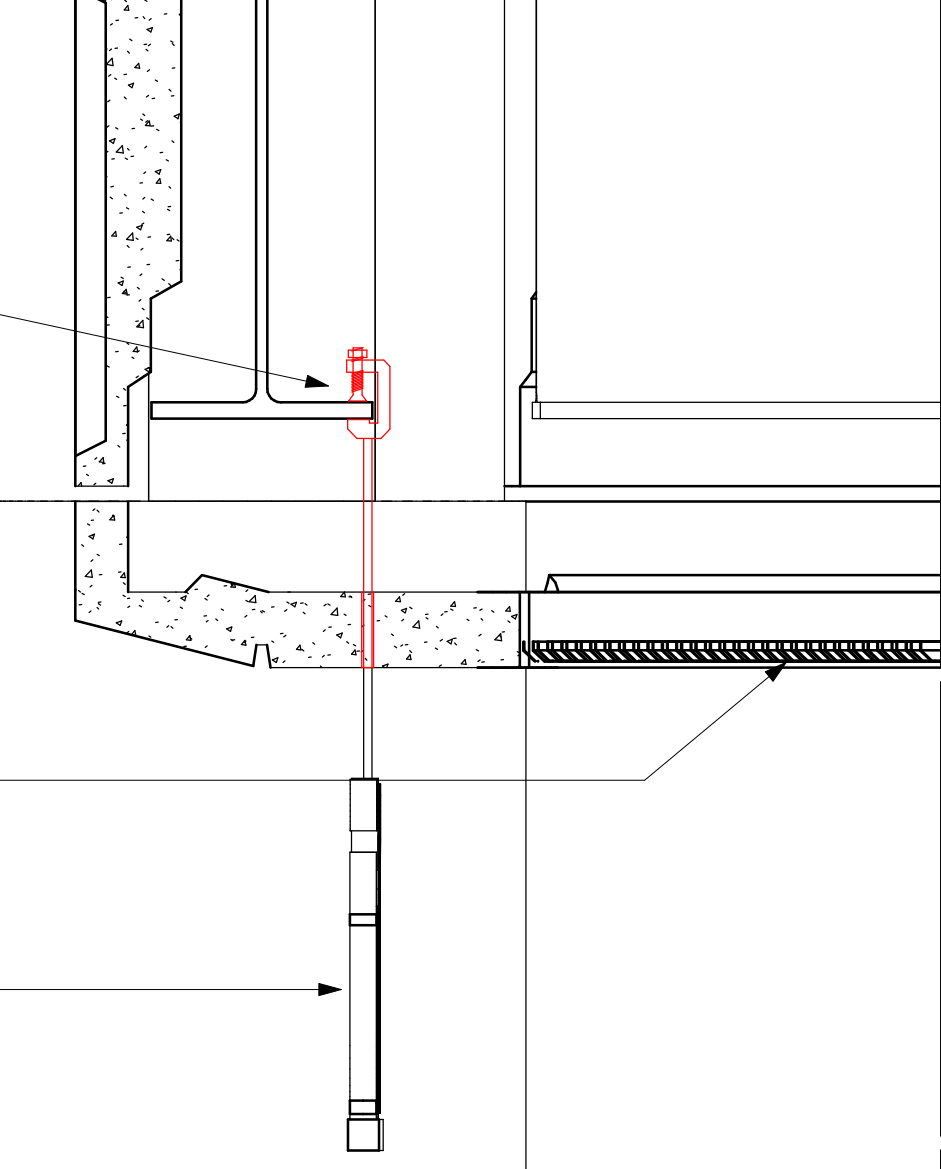
SHOPFRONT SIGN TYPICAL SECTION,  
SIGNS 1 - 4  
SIGNAGE SYSTEM TO BE FIXED TO EXISTING  
STEELWORK STRUCTURE VIA M12 THREADED ROD WITH  
PPC ALU (RAL 9005) SHEATH. HOLES TO BE FORMED IN  
GRC CLADDING PANELS TO ALLOW FIXING ABOVE,  
ACCESS THROUGH ADJACENT  
REMOVABLE HVAC GRILLES. ALL DETAILS IN LINE WITH  
SE DETAILS.

BUILDING COLUMN

HVAC GRILL

HANGING SIGN 1-4

9 SHOPFRONT SIGN 1-4 SECTION FIXING DETAIL  
1 : 10



14 GAUGE ALI HOUSING  
BRACKET FINISHED  
WHITE RAL 9003  
35-40% GLOSS FINISH

BRACKET TO BE BOLTED  
TO EXISTING COLUMN  
WITH RESIN FIXING IN LINE  
WITH SE DETAILS

10 SIGN 6&7 FIXING DETAILS  
1 : 15

APPROX DIMENSION OF  
PROJECTION EDGE OF SIGN  
TO FOOTPATH  
BOUNDARY EDGE

APPROX DIMENSION  
OF FACE OF SIGN TO  
FOOTPATH  
BOUNDARY EDGE

GRAFTON WAY

BOUNDARY LINE  
OF FOOTPATH

TOTTENHM COURT ROAD

BUILDING  
COLUMN

APPROX WIDTH OF  
FOOTPATH FROM  
SHOPFRONT GLAZING  
LINE

BUILDING  
COLUMN

APPROX DIMENSION OF  
FACE OF SIGN TO FOOTPATH  
BOUNDARY EDGE

APPROX DIMENSION OF  
PROJECTION EDGE OF SIGN  
TO FOOTPATH  
BOUNDARY EDGE

PROPOSED GROUND FLOOR GA PLAN

## NOTES

ORIGINAL A1

THIS DRAWING IS COPYRIGHT OF BROOKER FLYNN ARCHITECTS LTD AND MAY NOT BE  
REPRODUCED IN ANY FORM NOR TRANSFERRED TO OTHER PARTIES BY ELECTRONIC  
MEANS WITHOUT PRIOR WRITTEN CONSENT. NO DIMENSIONS TO BE SCALED FROM  
THIS DRAWING.

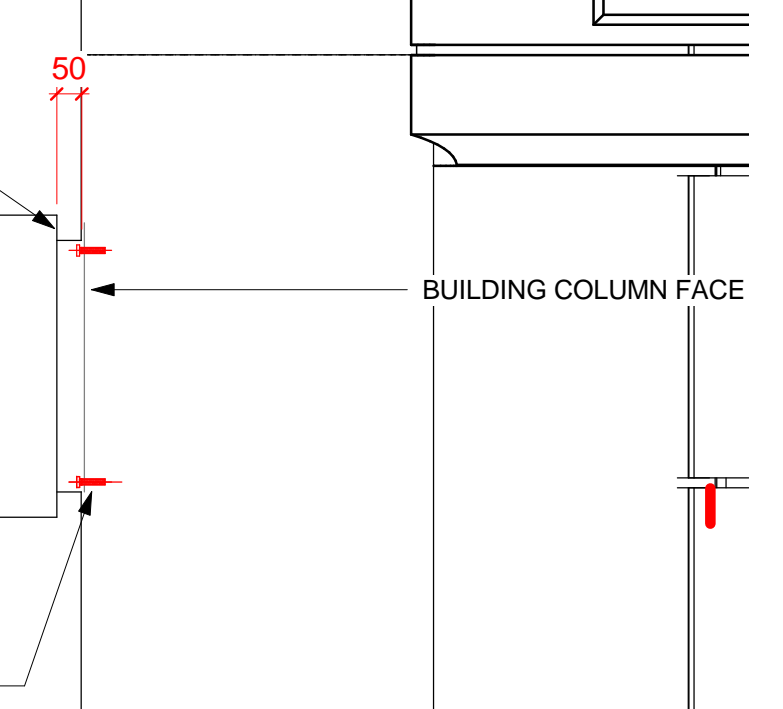
### SHOPFRONT SINAGE DETAILS

30mm HOGGED OUT PERSPEX 1177 OPAL LETTERS,  
5mm ALI BACK TRAYS.  
BLOCK OUT VINYL TO THE RETURNS REF TBC.  
LED FOR FACE ILLUMINATION  
LETTERS TO HAVE A 3m FOLDED ALI SUPPORT  
WITH 90 DEGREE FOLD TO MOUNT TO EXISTING PLYNTH.  
3mm BACKERS COATED TO RAL 9005 MATT BLACK.  
ALL ON 40MM SHS BAR PPC COATED TO RAL 9005,  
HUNG FROM SUITABLE POINT IN LINE WITH SE DETAILS,  
ON M10 THREADED ROD WITH RAL 9005 SHEATHING

LETTERS TO BE SUPPLIED WITH 3M OF CABLE  
ALL CABLE TO BE LOW SMOKE AND FUME

BUS STOP SIGN.  
SIGN TO BE WHITE FACE AND EDGES, DEPTH 100MM,  
HALO ILLUMINATED BLACK LETTERS-10M BLACK ACRYLIC-  
POLISHED EDGES, 3MM OPAL 030 PERSPEX ON 3MM  
030 PERSPEX BACKING  
DEPTH 100MM, LETTERS LAZER CUT PUSHED THROUGH,  
14 GAUGE ALI PANELS FINISHED WHITE RAL 9003  
40% GLOSS MATT WHITE INTERNAL FINISH  
INTERNAL MILD STEEL BOX SECTION FRAME

(ILLUMINATION STATIC INTERNAL NOT MORE THAN 450Cd/M2)



REV DATE DESCRIPTION DRAWN CHECKED



STORE NAME  
WHS-M&S-UCLH

COUNTRY  
UK

PROJECT  
UCLH-WHS-M&S-SHOP-IN-SHOP

DRAWING  
PROPOSED SHOPFRONT  
SIGNAGE

CONSULTANT  
BROOKER FLYNN ARCHITECTS

DISCIPLINE DESCRIPTION  
ARCHITECTURE  
CONSULTANT LOGO

BROOKERFLYNN  
architects

SCALE PAPER SIZE DATE DRAWN CHECKED

As indicated A1 11/12/21 RJTGB

STORE NUMBER PROJECT No DISCIPLINE CODE DRAWING No  
21.1085 20008

CONSULTANT PROJECT No STATUS REV  
21.1085 DD