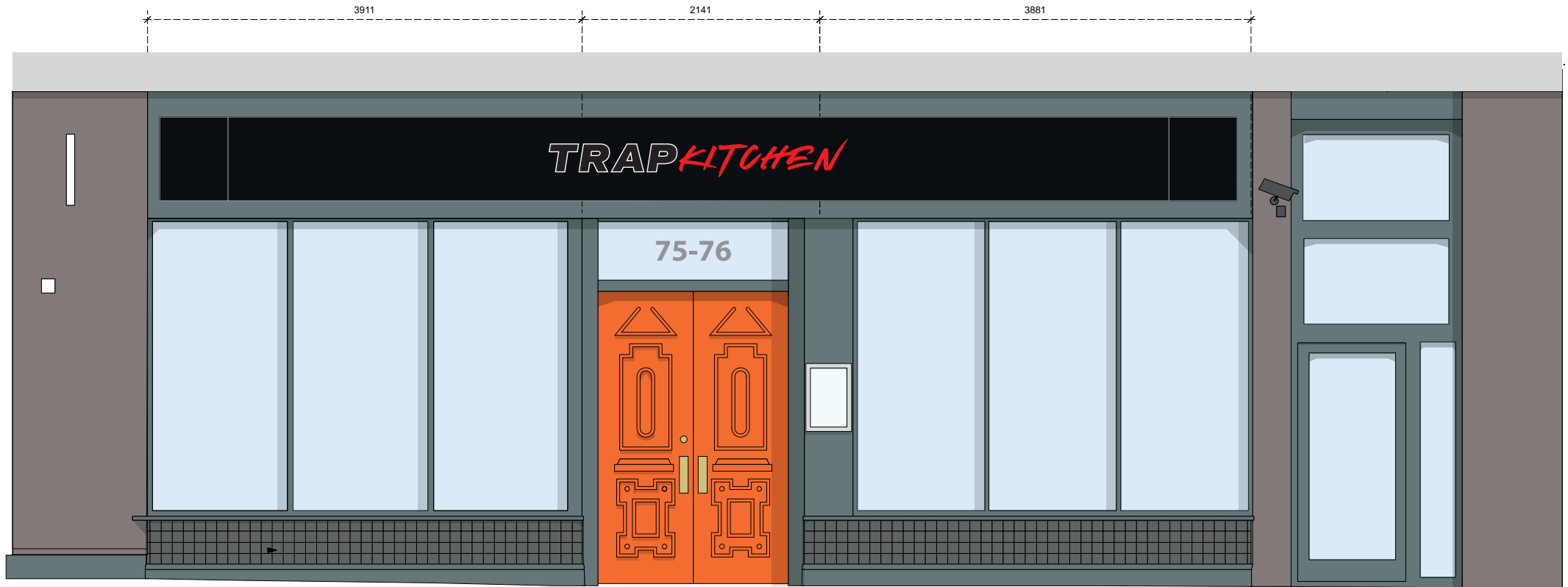


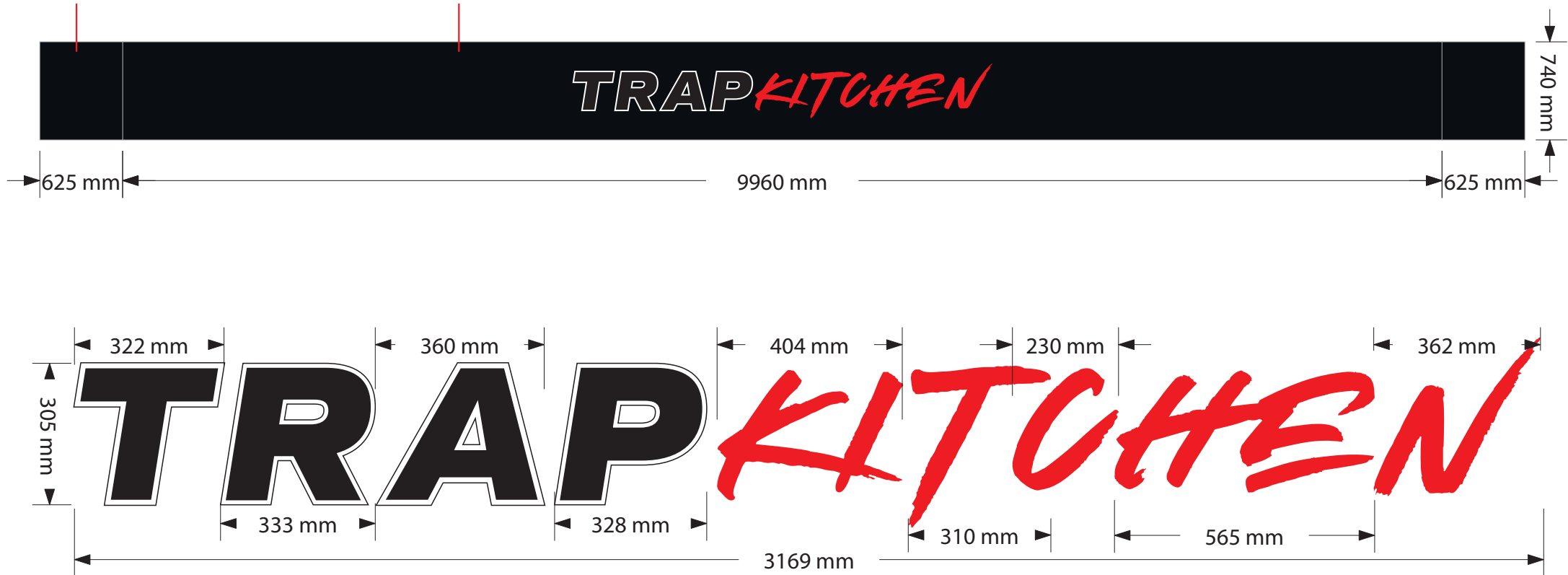
Proposed Sign



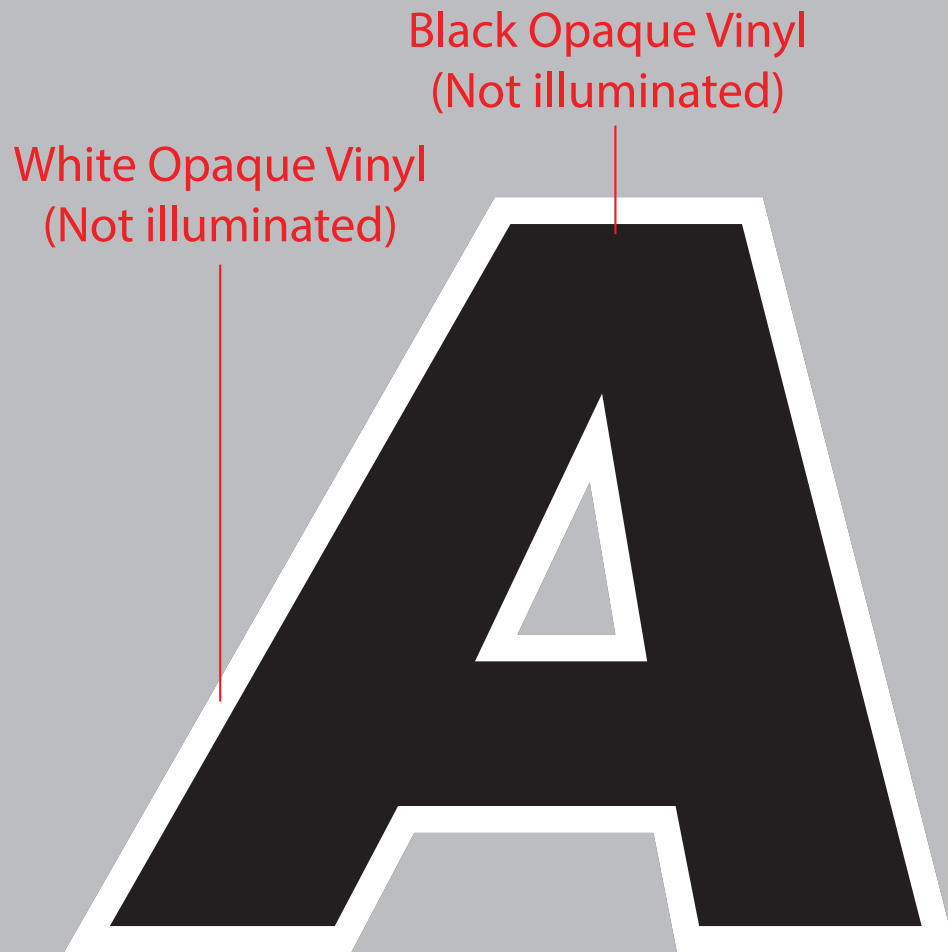
Item 1:
x1 30mm Xperse letters with embedded LED's for a partial return and halo illumination only.
Fitted to a backing panel as per drawing specification.

Backing panel
to cover vents

Backing panel



Letter Example



15mm of the return
will be opaque black
(Not illuminated)

15mm of the return
will be illuminated white acrylic
for partial illumination
(Approx 600 cd/m²).

Rear of letter will also be illuminated
for halo illumination
(Approx 600 cd/m²).



Letter Example

Red Opaque Vinyl
(Non Illuminated)



15mm of the return
will be opaque black
(Not illuminated)

15mm of the return
will be illuminated white acrylic
for partial illumination
(Approx 600 cd/m²).

Rear of letter will also be illuminated
for halo illumination
(Approx 600 cd/m²).

