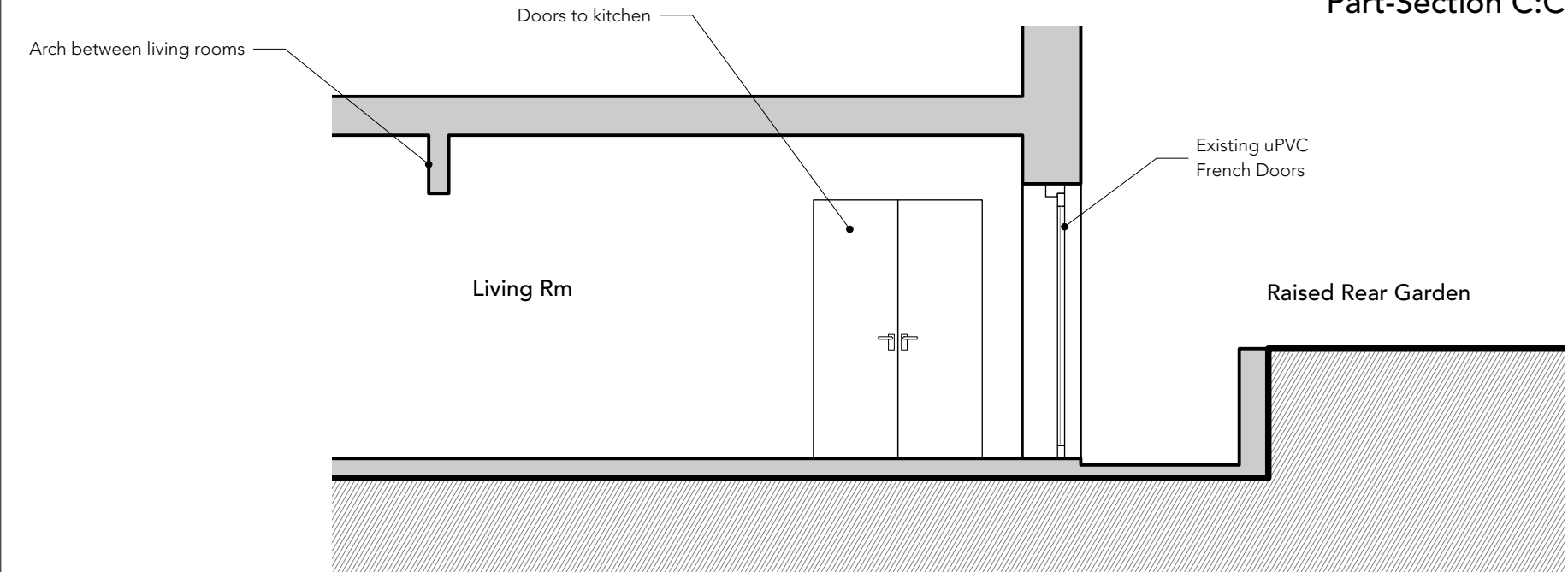
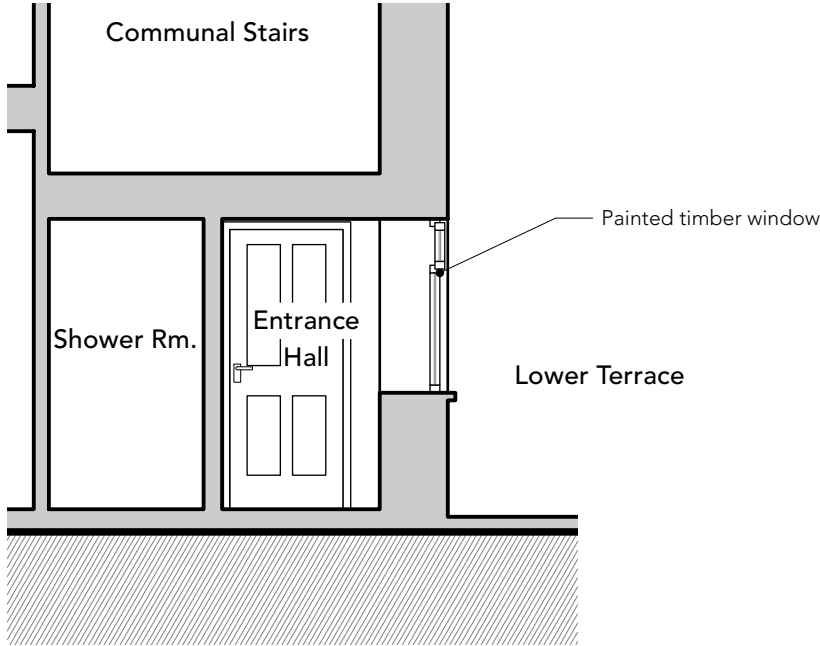


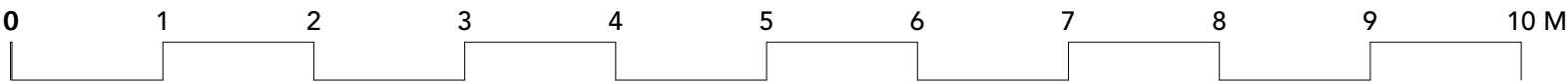
Existing
Part-Section C:C



Existing
Part-Section D:D



Existing
Part-Section E:E



<div><div><div>tierney architects</div><div>14 Bevington Road, London, W10 5TN</div><div>e: paul@tierneyarchitects.comw: www.tierneyarchitects.com</div></div><div><div>Drawing to be read in conjunction with all architect and consultants information.</div><div>Do not scale from drawing - ALL dimensions in mm & allow 50mm tolerance.</div><div>All dimensions to be checked on site. Drawing only to be used for purposes indicated.</div></div></div> <div><div>GENERAL NOTES</div></div>		<table><tr><th>Rev.</th><th>Date</th><th>Note</th></tr><tr><td colspan="3"></td></tr><tr><td colspan="3"></td></tr><tr><td colspan="3"></td></tr></table>		Rev.	Date	Note										<div><div>Project: 169-PrR</div><div>Client: Kate Levy</div><div>Site: 66a Priory Road London, NW6 3RE</div><div>Title: Existing Sections</div><div><div>Scale: 1:100</div><div>Sheet Size: ISO A3</div><div>Date:10/11/2021</div></div><div><div>Drawn by:PT</div><div>Checked by:</div><div>Approved by:</div></div><div><div>Job No. Status</div><div>Drawing No. & Revision</div><div>Prefix</div></div><div><div>169 Stage 1</div><div>169-IN-250</div><div>P</div></div></div>		
Rev.	Date	Note																