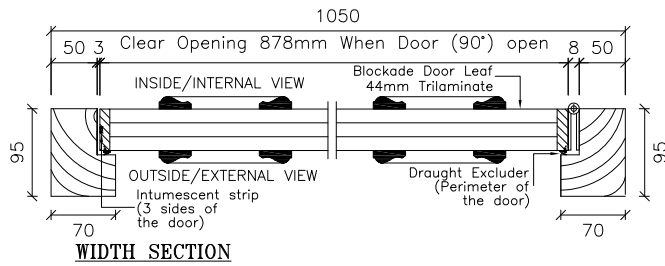


All / Any electrical equipment to be disconnected and connected by others.

Q-MARK

PASS 24

PD No..... APPROVED



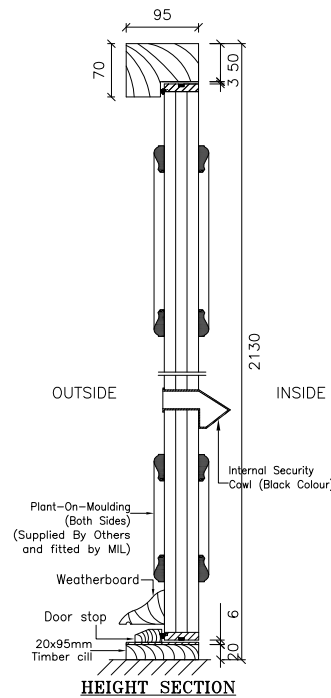
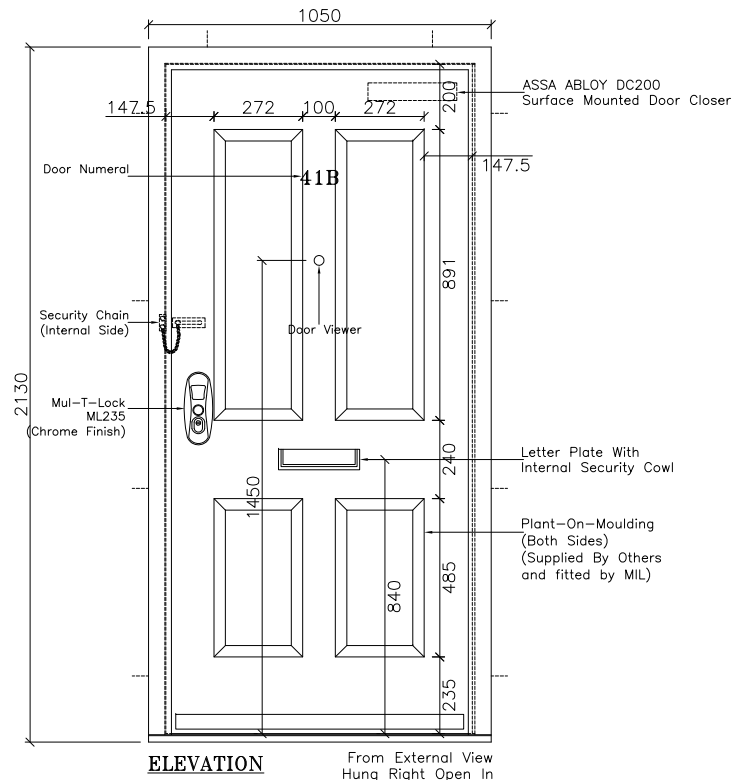
### 41B, Plot 9 Entrance Door

- FD30S Doorset.
- Door clear opening 878mm when open at 90°.

<b>ITEM 1</b>	
Test Report Number : WYC412017 / 03	
Testing Standard BS EN 1634-3:2004	
Positive	
25Pa - 0.429 m <sup>3</sup> /hr/m (86% under allowable capacity)	
Negative	
25Pa - 0.405 m <sup>3</sup> /hr/m (87% under allowable capacity)	
Percentage of seal for Intumescent Fire Seal	61% (Interruption at hinge, shoot bolts and Lock postlions)
Percentage of seal for Draught Seal	100% (no Interruption)
<b>ITEM 2</b>	
Primary Burn Test Report No.	WF 420594 CHL/RF13251
<b>ITEM 3</b>	
Field Application Report No.	CHL/A12038 RevC / WF 407952
<b>ITEM 4</b>	
Enhanced Security Doorset to PAS24 Report No.	P11034
<b>ITEM 5</b>	
Q-Mark Fire Door Manufacturing 006 Scheme Certificate No.	1244
<b>ITEM 6</b>	
FSC Certificate No.	TT-COC-002470
<b>ITEM 7</b>	
Q-Mark Enhanced Security Door Scheme to PAS 24:2016 and BS644:2012	269
<b>ITEM 8</b>	
SBD License Valid Date	16th October 2020
<b>ITEM 9</b>	
Thermal Report No.	WL428978
<b>ITEM 10</b>	
Acoustic Report No.	WYC429011/P005

#### NOTES:

DESCRIPTION	MATERIAL / PROFILE	SIZES	NO OF UNITS / METER
<b>DOOR ASSEMBLY</b>			
Door Leaf	Flamebreak - Solid Core - 44mm	938mmX2051mm	1 Qty.
Door Lipping	Meranti	12mmX48mm	6.0m Approx.
Plant on Moulding Strip	-	-	-
Intumescent Strip - Around Door	LP15TS	15mm	6.0m Approx.
Draft Excluder	Aquamac-21	9mm	6.0m Approx.
<b>FRAME ASSEMBLY</b>			
Frame	Meranti Rebatbed Hardwood Density : 640kg/m <sup>3</sup> ±20%	70x95x50mm	5.155m Approx.
Draft Excluder	Aquamac-21	-	-
Frame Assembly Screw	5mm	100mm long	10 qty.
Loose Packing	Hardwood	-	-
<b>IRONMOGENERY</b>			
Hinge	8mm Continuous Mild Steel	-	2.026m Approx.
Lever Handle	As Part Of Lockset	Internal Side	1 Qty.
Fixed Pull Handle	As Part Of Lockset	External Side	1 Qty.
Door closer	ASSA ABL0Y DC200	-	1 Qty.
Letter Plate	Multi-Secure & Internal Black colour Cowl	65x265mm	1 Qty.
Cill	Stainless Steel Strap	3mm strap	1 Qty.
Threshold	Hardwood	20x95mm cill	1 Qty.
Door Viewer	AA76	14mm Dia	1 Qty.
Door Numerals	As Required	Number 41B	1 Qty.
Door Security Chain	As Required	-	1 Qty.
Locking System	Multi-Lock ML235	-	1 Qty.
<b>GLASS</b>			
Glazing	6.8mm Laminated Glass+6mm cavity + 7.2mm pyrogard obscure	-	-
Glazing Bead	Sapele Timber	-	-
Glazing Tape	FireStrip30	-	-
SIDE / OVER PANEL			
Panel 1	Flamebreak Solid Core	44mm Door Blank	-
<b>COLOUR</b>			
Door	Black		
Frame	Black		



#### FIXING DETAIL

- = Fixing Positions
- = 10x92 S/Sleeve Anchor Fixing on Masonary
- = M10 Machine Screw (for Steel)
- = M10 Screw (for Wood)

THIS DRAWING IS THE PROPERTY OF MULTHINSTALLATIONS LIMITED AND MUST NOT BE COPIED OR DISCLOSED TO A THIRD PARTY WITHOUT THE WRITTEN PERMISSION OF MULTHINSTALLATIONS LIMITED.

REV	DETAIL	DATE
B	As per client's comments	20/07/2020
A	As per comments / survey	15/07/2020

#### PROJECT : 41 Fortress Road

London NW5 1AD  
41B, Plot 9 Entrance Door  
Motacus Constructions Ltd.

DRAWN BY : Ravi DATE : 21/07/2020

CHECKED BY : SCALE : NTS



Fire Door Manufacturer  
Fire Door Maintenance  
Fire Door Installation

