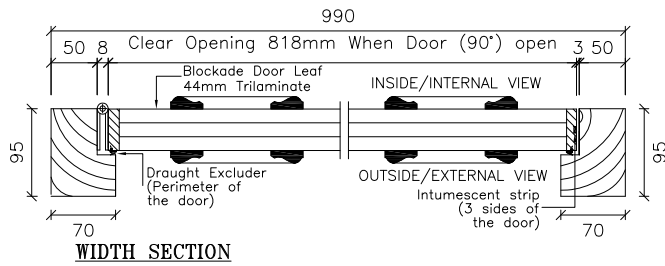


All / Any electrical equipment to be disconnected and connected by others.

Q-MARK

PASS 24

PD No..... APPROVED



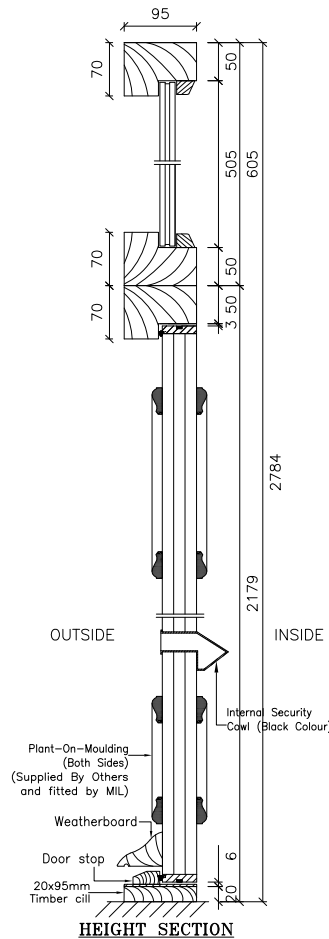
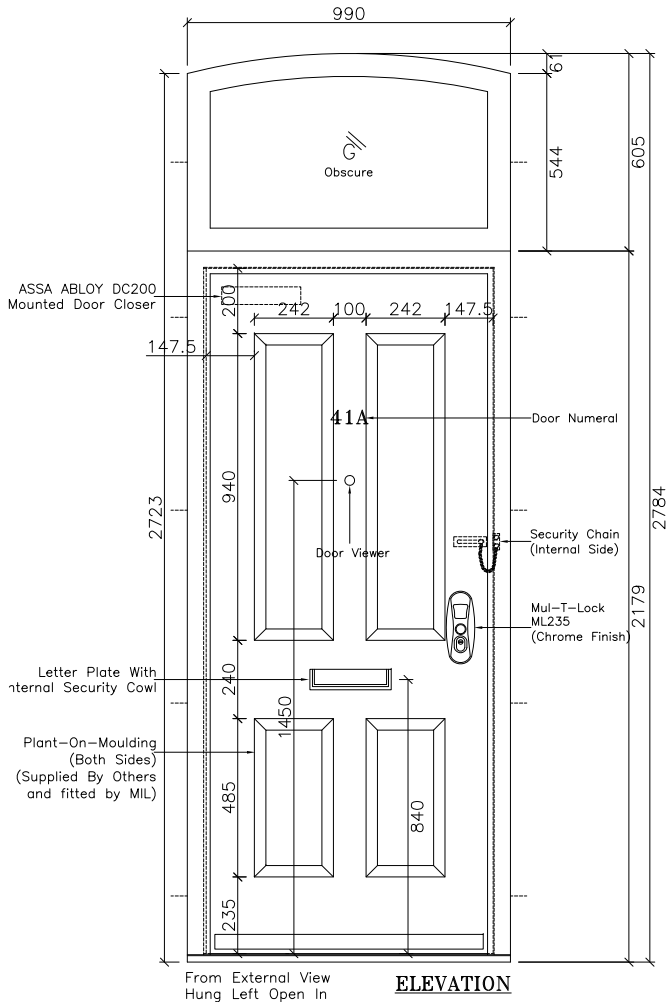
41A, Plot 8 Entrance Door

- FD30S Doorset.
- Door clear opening 818mm when open at 90°.

ITEM 1	
Test Report Number : WYC412017 / 03	
Testing Standard BS EN 1634-3:2004	
Positive	25Pa - 0.429 m³/hr/m (86% under allowable capacity)
Negative	25Pa - 0.405 m³/hr/m (87% under allowable capacity)
Percentage of seal for Intumescent Fire Seal	61% (interruption at hinge, shoot bolts and Lock positions)
Percentage of seal for Draft Seal	100% (no Interruption)
ITEM 2	
Primary Burn Test Report No.	WF 420594 Chill/RF13251
ITEM 3	
Field Application Report No.	CHIT/A12038 RevC / WF 407952
ITEM 4	
Enhanced Security Doorset to PAS24 Report No.	P11034
ITEM 5	
Q-Mark Fire Door Manufacturing 006 Scheme Certificate No.	1244
ITEM 6	
FSC Certificate No.	TT-COC-002470
ITEM 7	
Q-Mark Enhanced Security Door Scheme to PAS 24:2016 and BS644:2012	269
ITEM 8	
SBD License Valid Date	16th October 2020
ITEM 9	
Thermal Report No.	WL426878
ITEM 10	
Acoustic Report No.	WYC429011/P005

NOTES:

DESCRIPTION	MATERIAL / PROFILE	SIZES	NO OF UNITS / METER
DOOR ASSEMBLY			
Door Leaf	Flamebreak - Solid Core - 44mm	878mmX2100mm	1 Qty.
Door Lipping	Meranti	12mmX48mm	6.0m Approx.
Plant on Moulding Strip	-	-	-
Intumescent Strip - Around Door	LP15TS	15mm	6.0m Approx.
Draft Excluder	Aquamac-21	9mm	6.0m Approx.
FRAME ASSEMBLY			
Frame	Meranti Rebated Hardwood Density : 640kg/m³, ±20%	70x95x50mm	7.54m Approx.
Draft Excluder	Aquamac-21	-	-
Frame Assembly Screw	5mm	100mm long	10 qty.
Loose Packing	Hardwood	-	-
IRONMOGENERY			
Hinge	8mm Continuous Mild Steel	-	2.1m Approx.
Lever Handle	As Part Of Lockset	Internal Side	1 Qty.
Fixed Pull Handle	As Part Of Lockset	External Side	1 Qty.
Door closer	ASSA ABLOY DC200	-	1 Qty.
Letter Plate	Multi-Secure & Internal Black colour Cowl	65x265mm	1 Qty.
Cill	Stainless Steel Strap	3mm strap	1 Qty.
Threshold	Hardwood	20x95mm cill	1 Qty.
Door Viewer	AA76	14mm Dia	1 Qty.
Door Numerals	As Required	Number 41A	1 Qty.
Door Security Chain	As Required	-	1 Qty.
Locking System	Multi-Lock ML235	-	1 Qty.
GLASS			
Glazing	6.8mm Laminated Glass+6mm cavity + 7.2mm pyroguard obscure	TBC	1 Qty.
Glazing Bead	Sapele Timber	-	-
Glazing Tape	FireStrip30	-	Around Glass
SIDE / OVER PANEL			
Panel 1	Flamebreak Solid Core	44mm Door Blank	-
COLOUR			
Door	Black		
Frame	Black		



FIXING DETAIL

- = Fixing Positions
- = 10x92 S/Sleeve Anchor Fixing on Masonary
- = M10 Machine Screw (for Steel)
- = M10 Screw (for Wood)

THIS DRAWING IS THE PROPERTY OF MULTHSTALLATIONS LIMITED AND NOT BE COPIED OR DISCLOSED TO A THIRD PARTY WITHOUT THE WRITTEN PERMISSION OF MULTHSTALLATIONS LIMITED.

B	As per client's comments	20/07/2020
A	As per comments & survey	15/07/2020
REV	DETAIL	DATE

PROJECT : 41 Fortress Road

London NW5 1AD
41A, Plot 8 Entrance Door
Motacus Constructions Ltd.

DRAWN BY : Ravi DATE : 21/07/2020

CHECKED BY : SCALE : NTS



Fire Door Manufacturer
Fire Door Maintenance
Fire Door Installation

