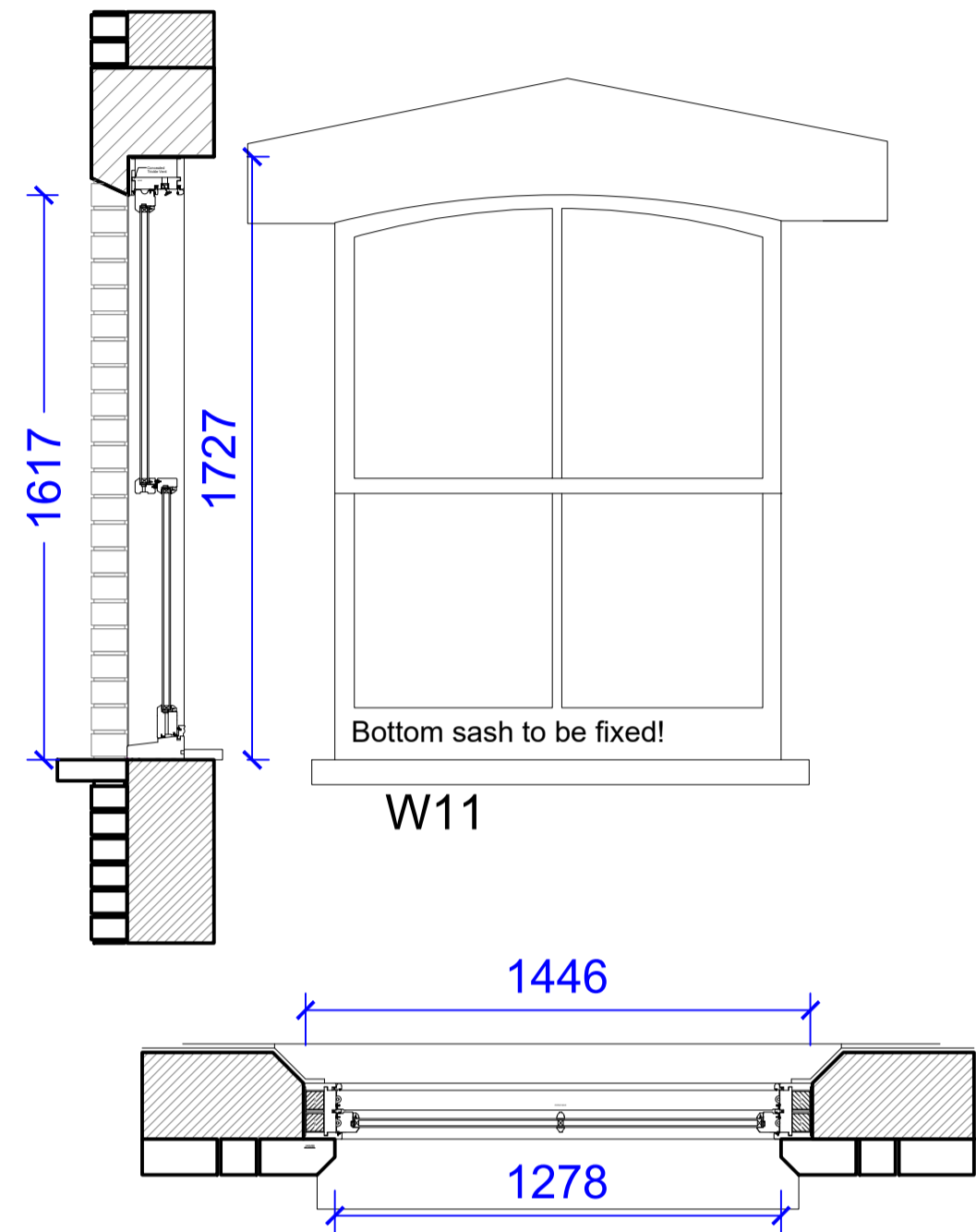


# Windows Schedule/

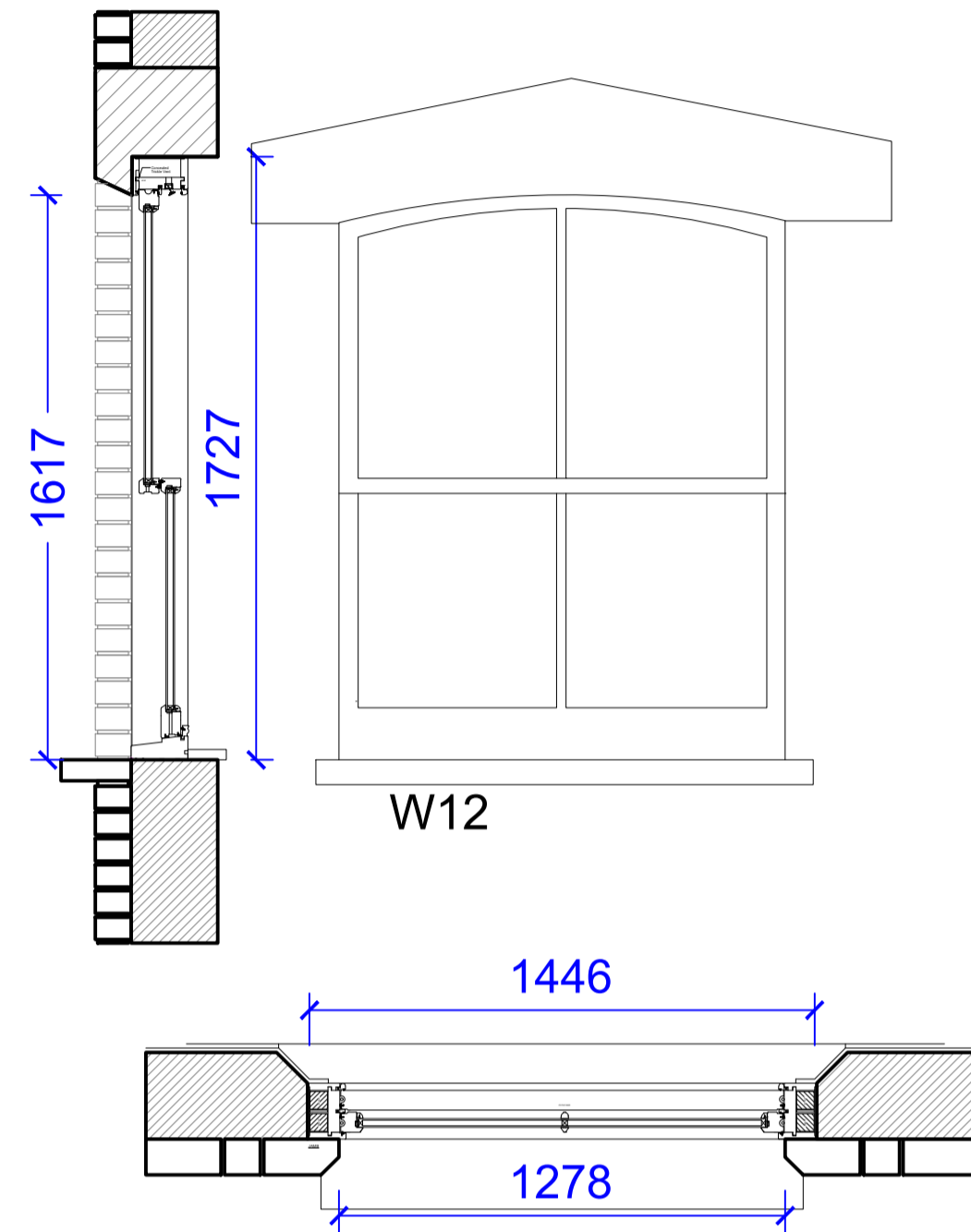
## Timber Box Sash Windows

### Front Facade

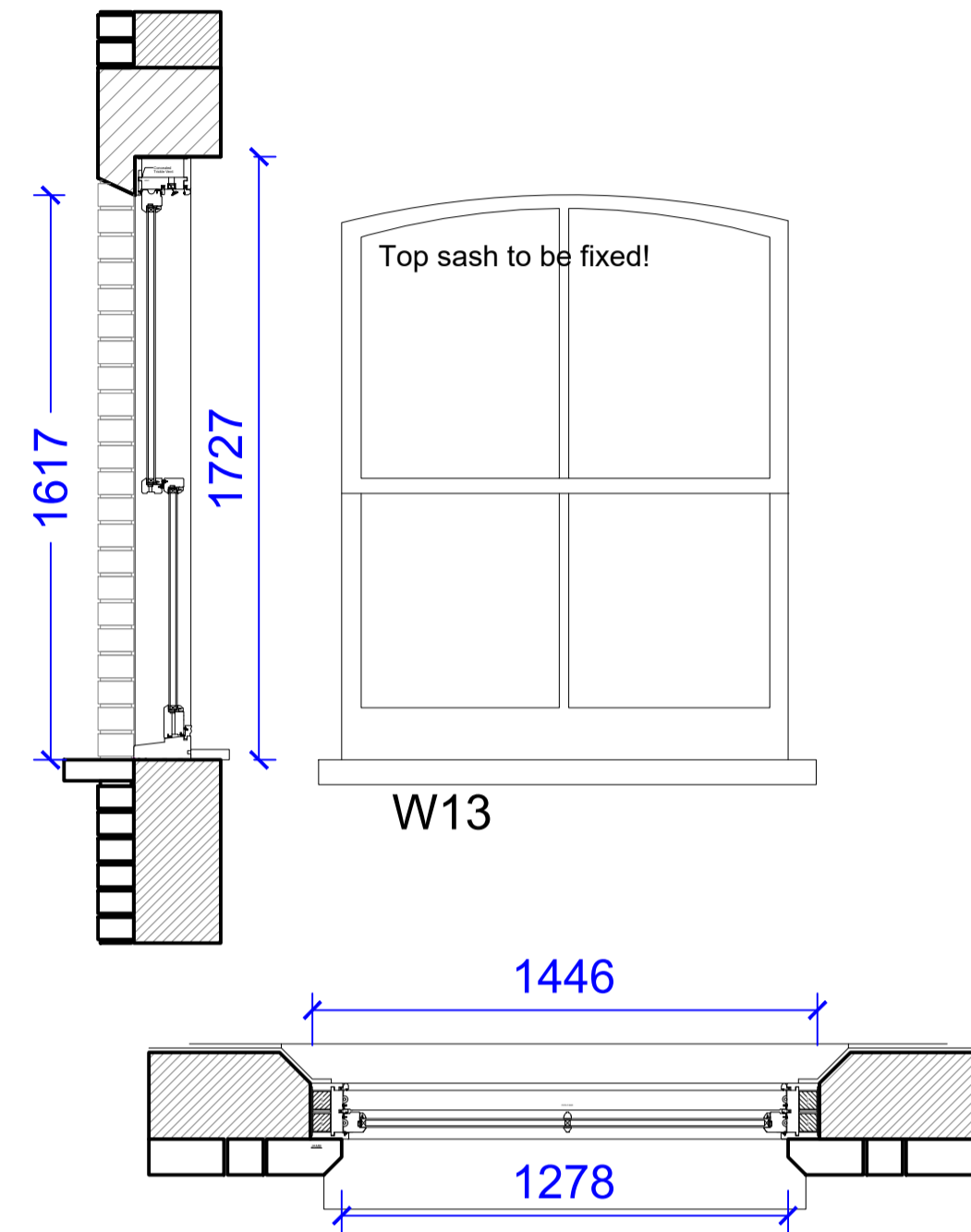
Existing Opening to be enlarged;  
Supply and install new box sash window W11 with  
fire rated double-glazing; bottom sash to be fixed!  
New Lintel to be Installed, Refer to SE Drawings!



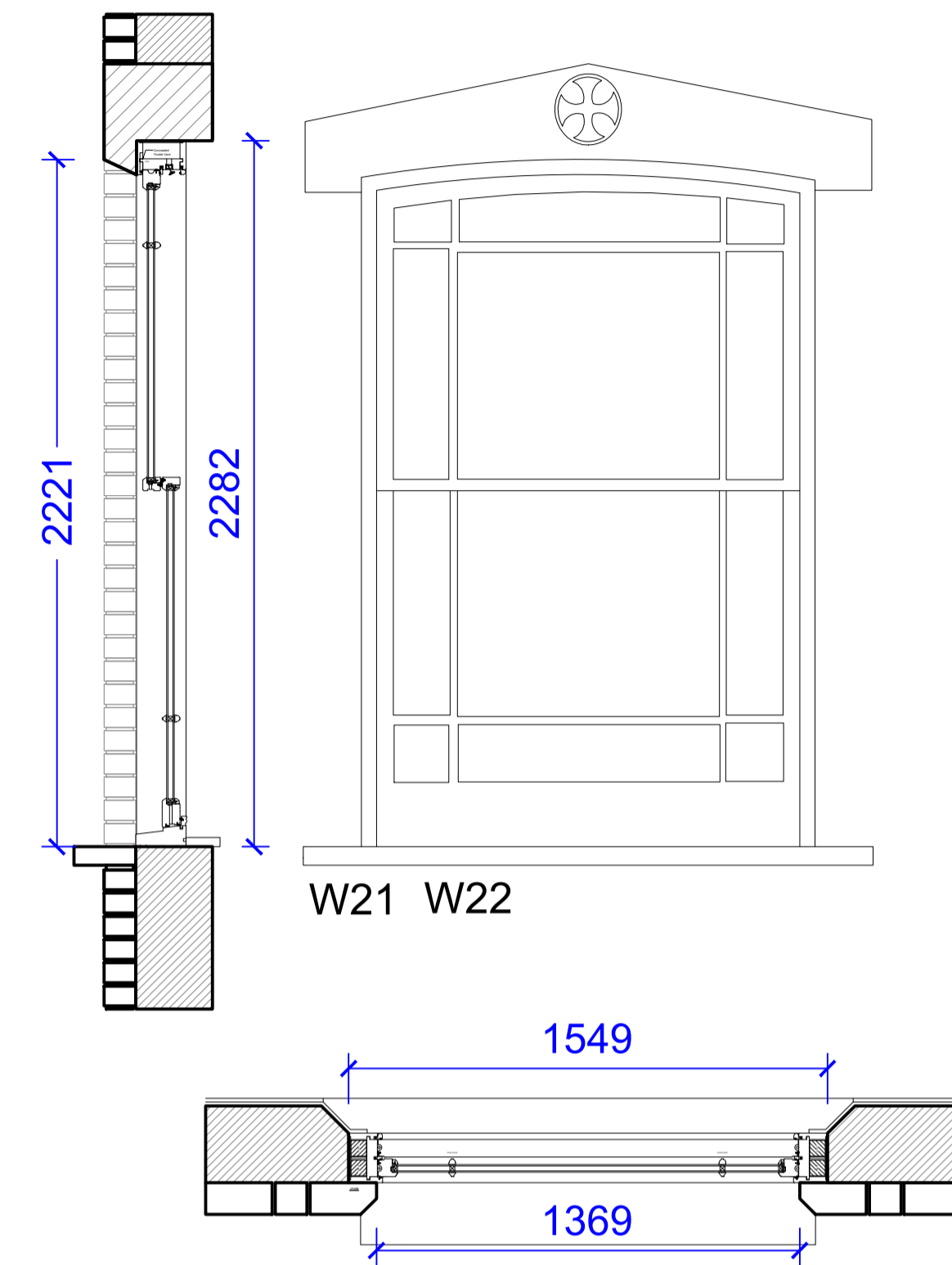
Existing Opening to be enlarged;  
Supply and install new box sash window W12 with  
fire rated double-glazing;  
New Lintel to be Installed, Refer to SE Drawings!



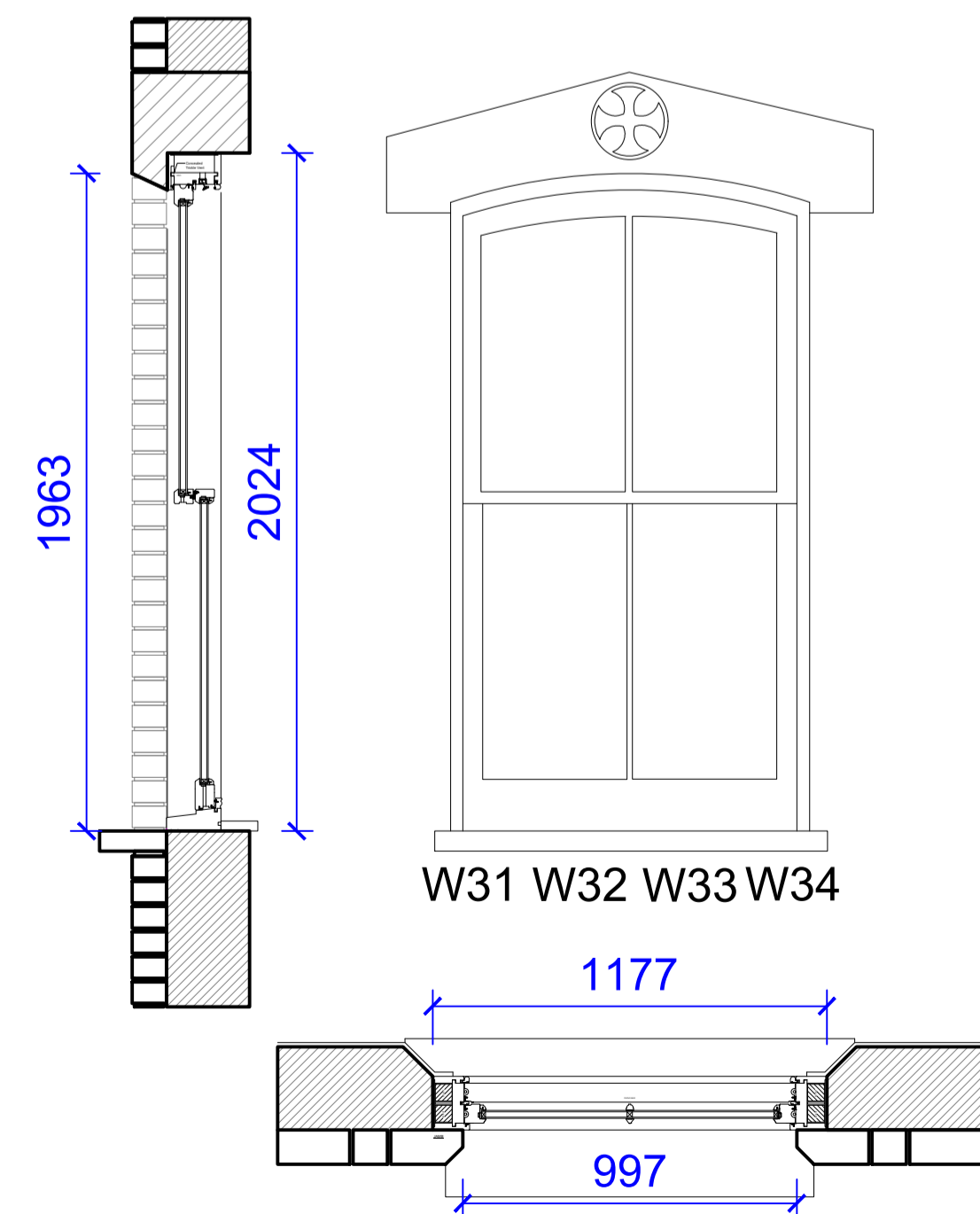
Existing Opening to be enlarged;  
Supply and install new box sash window W12 with  
fire rated double-glazing; top sash to be fixed!  
New Catnic Lintel to be Installed, Refer to SE Drawings!



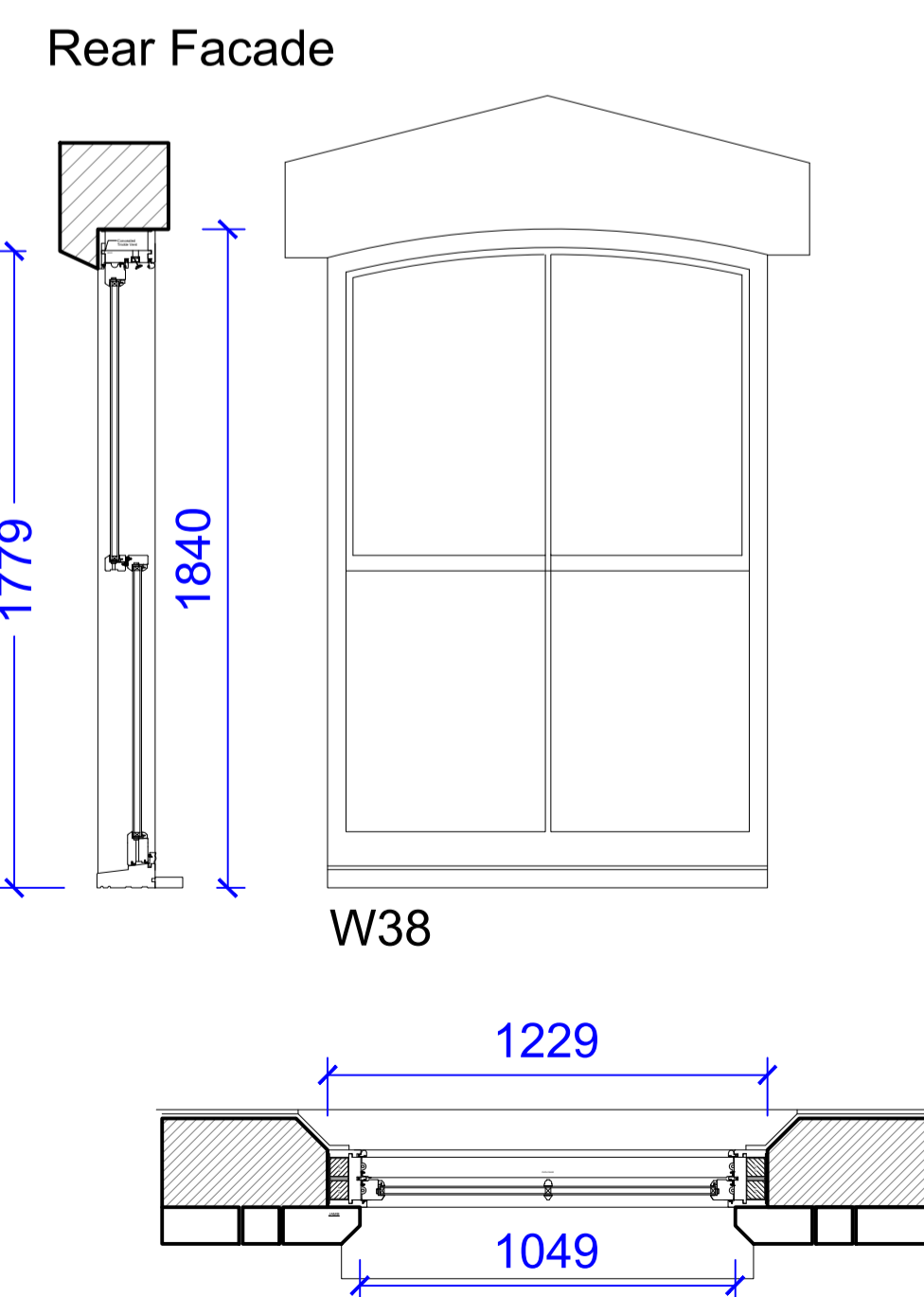
Existing Opening to be retained;  
Supply and install new box sash window  
W21 & W22 with  
Non fire rated with 4/16/4 Argon Gas double-glazing;  
Lintel, Refer to SE Drawings!



Existing Opening to be retained;  
Supply and install new box sash window  
W31,W32,W33,W34 with  
Non fire rated with 4/16/4 Argon Gas double-glazing;  
Lintel, Refer to SE Drawings!



Existing Opening to be retained;  
Supply and install new box sash window  
W38 with  
Non fire rated with 4/16/4 Argon Gas double-glazing;  
Lintel, Refer to SE Drawings!



Revisions

**Ko Architects**  
72 Disraeli Road, London SW15 2DX  
020 8780 3397  
postbox@koandpartners.co.uk

Client: **Leycam LTD**  
Project: **41 Fortress Road, London NW5 1AD**  
Dwg: **Window Schedule- Front Facade**  
Dwg No: **394-B-18** Revision:  
Date:  
Scale: **1:20@A1**