

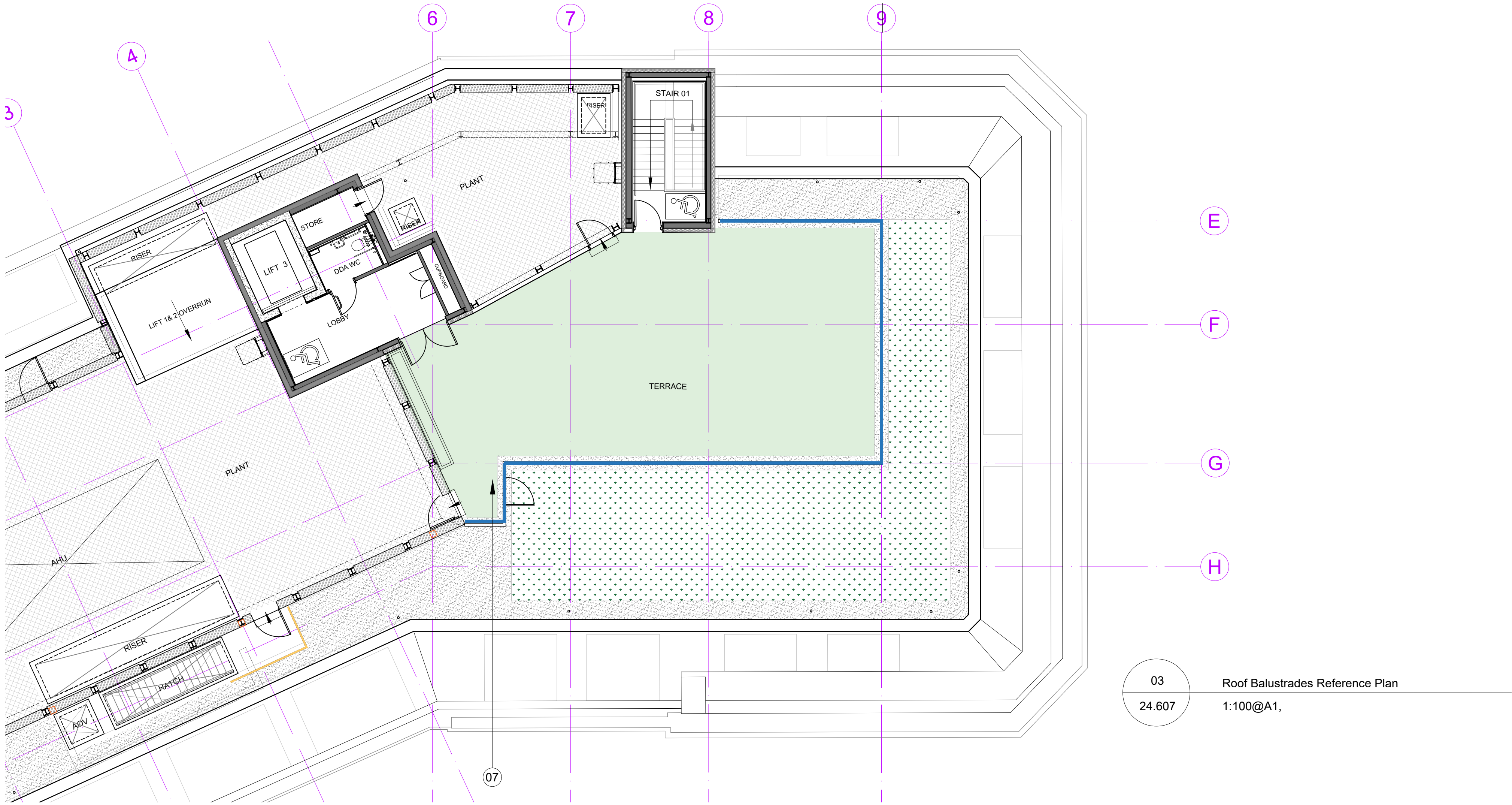
BARR GAZETAS

Note:

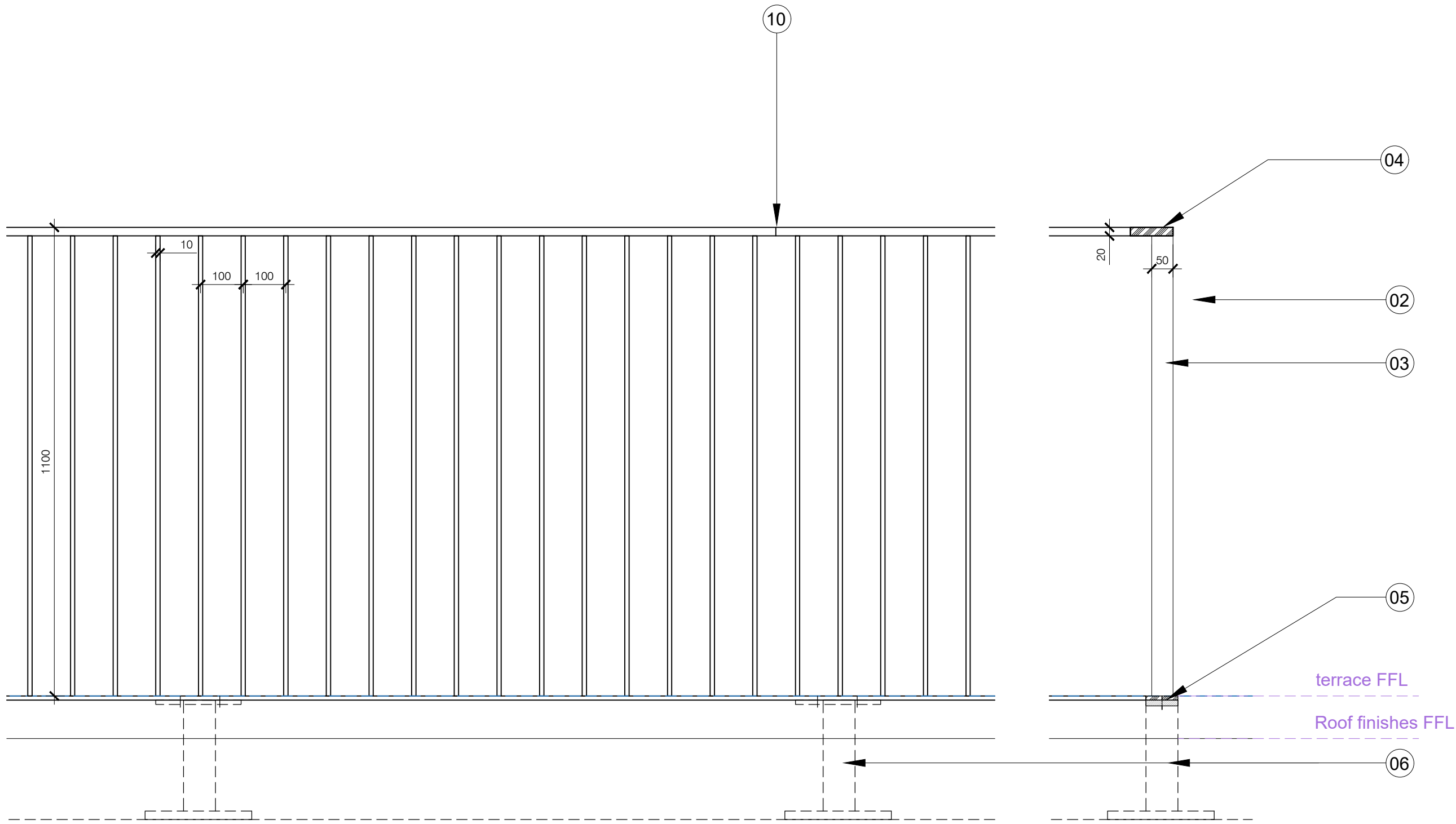
-
- Balustrade: 50x10 steel uprights @ 100mmcc's welded to steel plates top and bottom.
- Uprights: PPC Black steel flat bars (10x50) @ 100mmcc's
- Handrail: PPC Black steel flat plate welded to top of vertical flat bars
- 50x20 PPC Black steel plate welded to bottom of uprights with countersunk fixings to balustrade support below.
- Balustrade supports at 1.5m cc's. to be fixed back to primary steel.
- Maintenance access gate. Framing to match adjacent balustrade
- Square plate and pin hinge. PPC black finish
- Lever handle and cylinder lock. PPC black finish.
- Joint to be welded on site

- Balustrade Type 1.
1.1m high PPC Black balustrade with maintenance access gate as shown
- Galvanised edge protection system to be painted the same colour as the plant screen. Samples and fabrication drawings to be provided for approval.

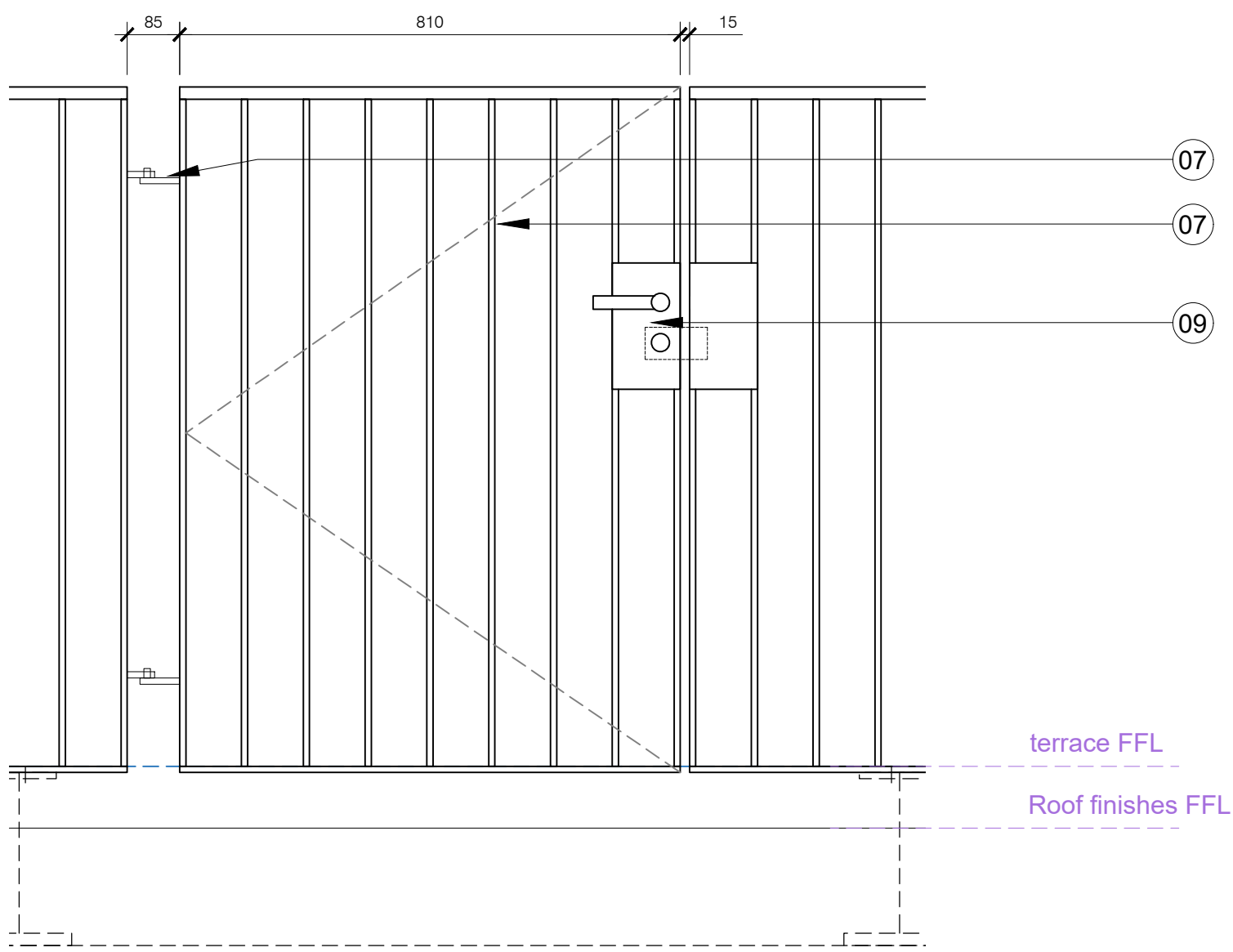
- Terrace
- Green Roof
- Ballast



03
24.607
Roof Balustrades Reference Plan
1:100@A1,



01
24.607
Balustrade Type 1 Typical Elevation and Section
1:10@A1, 1:20@A3



02
24.607
Balustrade Type 1 - Gate Elevation
1:10@A1, 1:20@A3

P1	planning	AC	08.11.21
Rev.	Description.	By	Date

Client
Kings Keeley Limited C/o Clearbell Capital LLP

Project
65 Kingsway - Base Scheme

Title
Roof Balustrade Details

Status	Purpose of issue	RIBA stage
A1	planning	5

Project No.	Drawn	Checked	Scale	Rev.
1914	AC	TJ	1:100 @ A1 1:200 @ A3	----P1

Drawing No.
1914-BG-01-R1-DR-A-24.607

Do not scale from this drawing. The Contractor is to take and check all dimensions on site before work commences. Discrepancies must be reported to the Architect. Subcontractors must verify all dimensions on site before making a shop drawing or commencing manufacturing. This drawing is copyright. ©

© Copyright Barr Gazetas Ltd.
A 10 Heddon Street, London, W1B 4BG
T 0207 636 5561
W www.barrgazetas.com