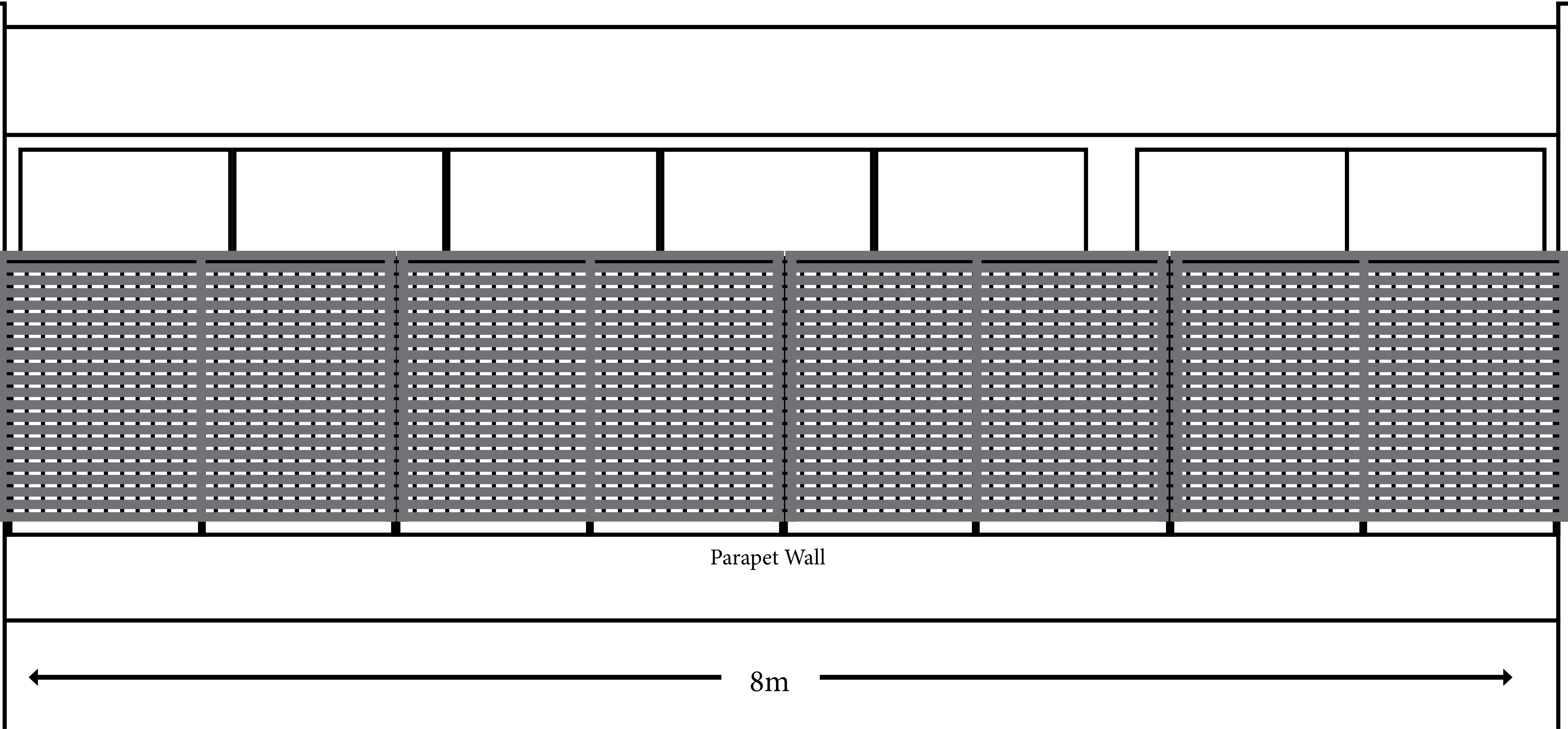


Rail framework and Screening

Front View

Panels fixed on front of
the steel rail framework

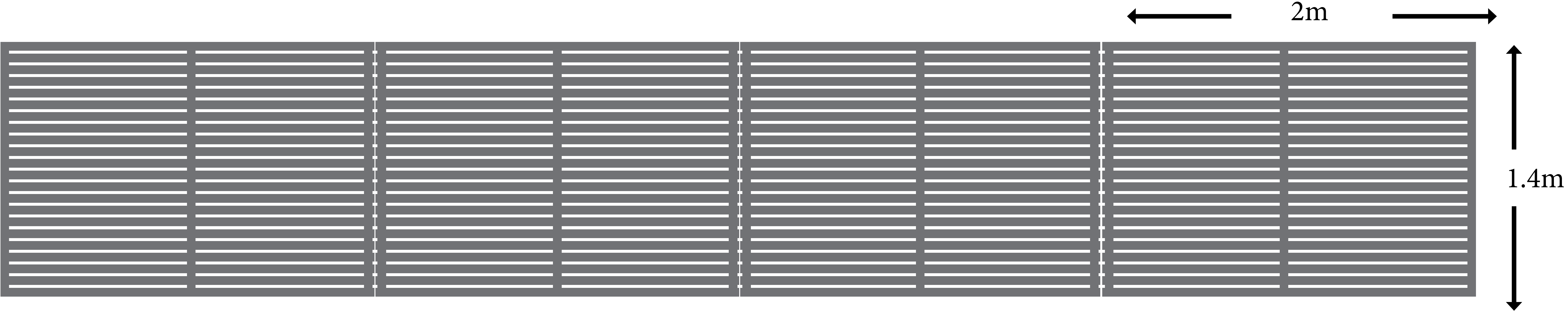


Parapet Wall

8m

1.4m

4 x Pre-made Panels
across front

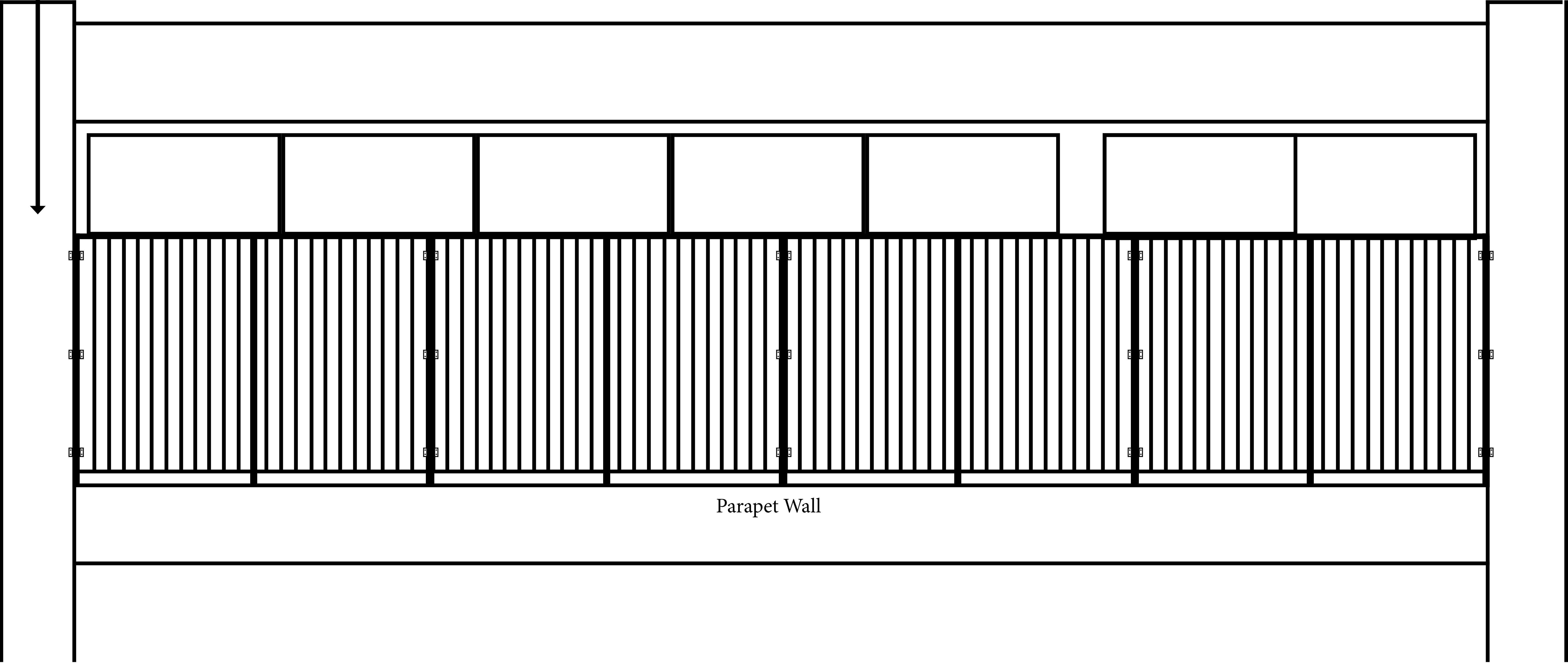


RAIL FRAMEWORK

MAIN SUPPORTS:
40mm box steel
Fixed into top of wall coping at
1m centers, bolted on steel plate

BARS:
12mm flat steel welded

TOP AND BOTTOM RAILS:
40 x 8mm



PADS:

Welded pads pre
dilled for fixing to
wood panels

WOODEN
PANELS:

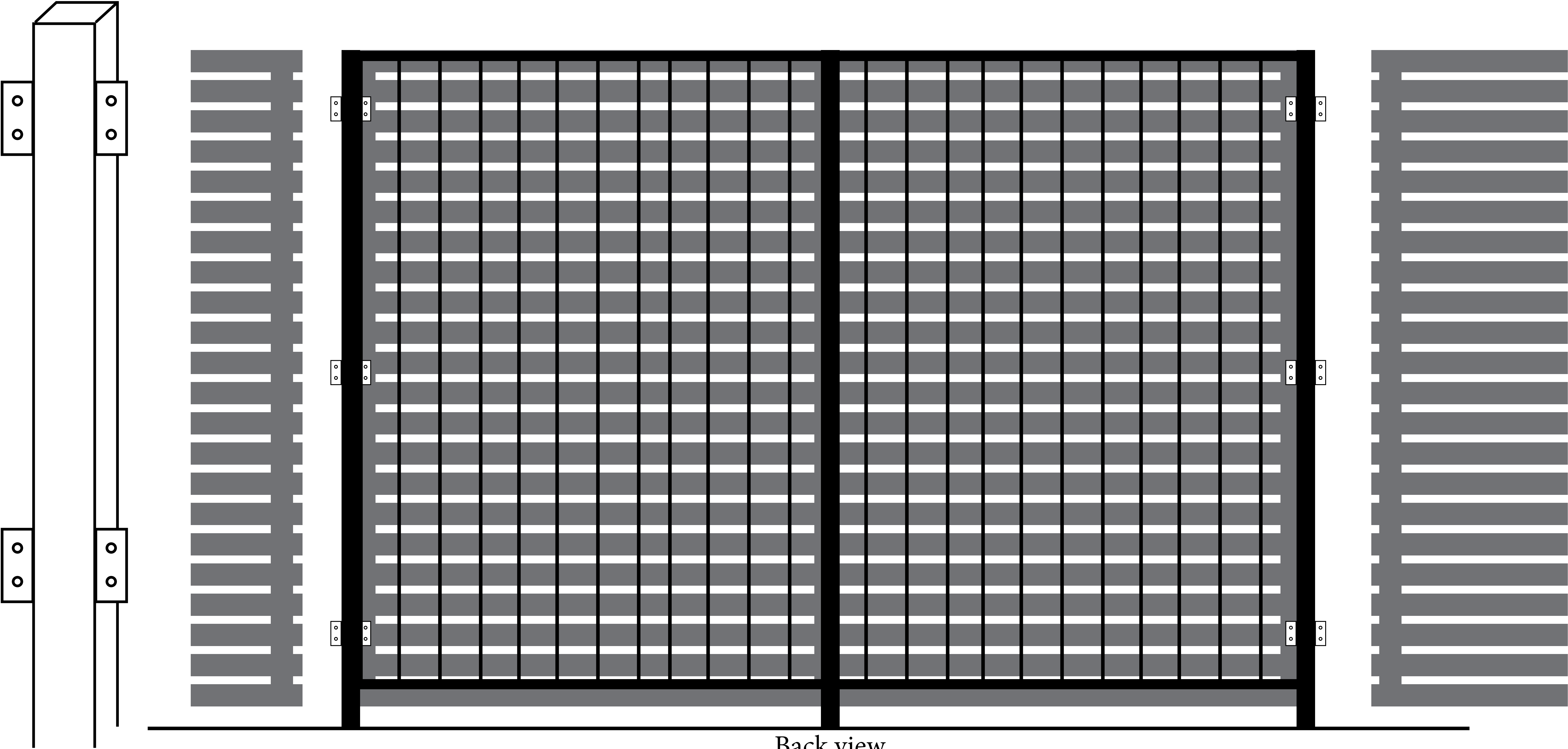
4 x Pre-made painted
panels across front

22 Batons Deep

15mm gap to allow for
plant growth through
spaces

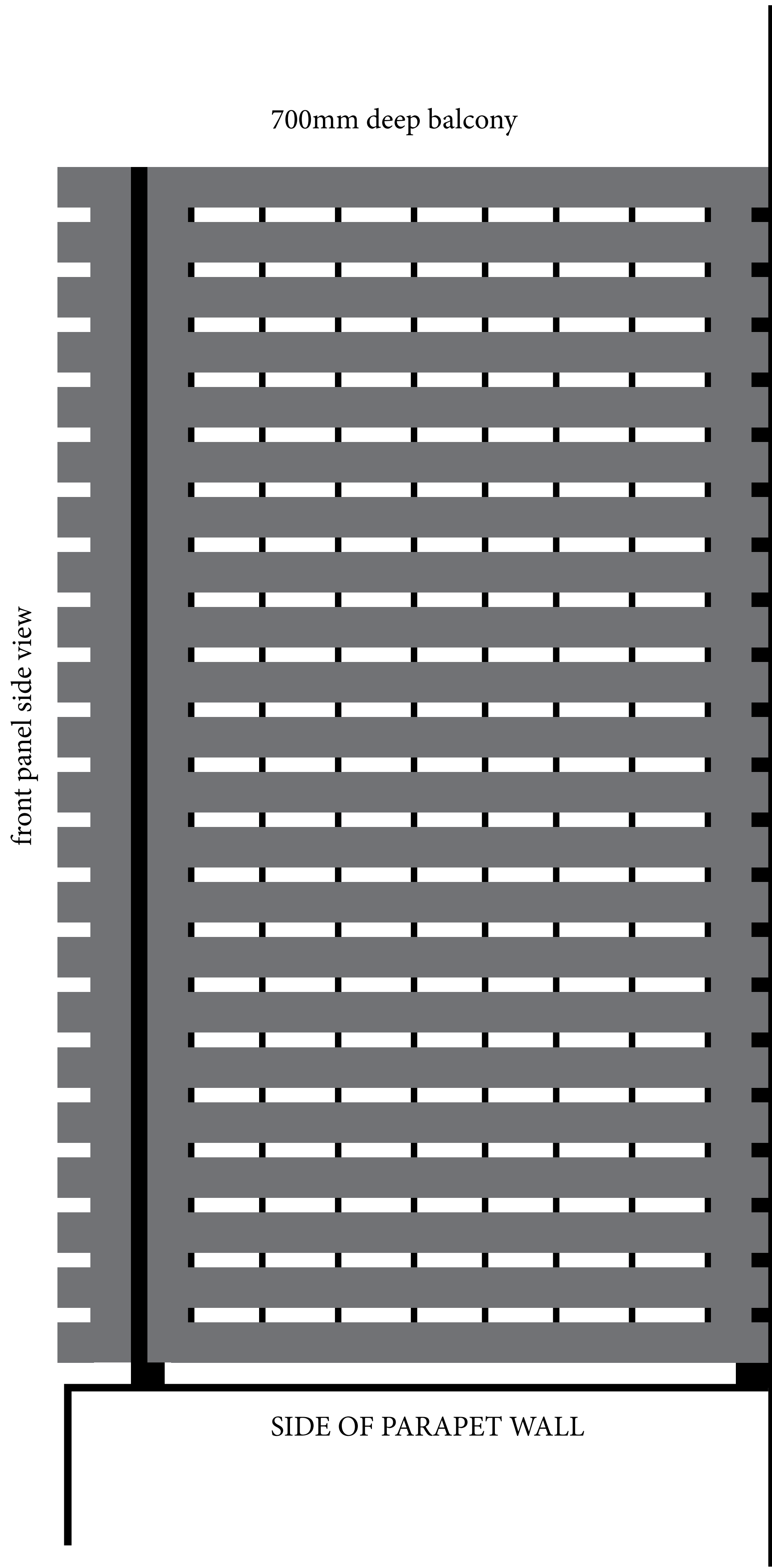
@ 2m Widths

Secured via bolts onto
welded pads on rail
main supports

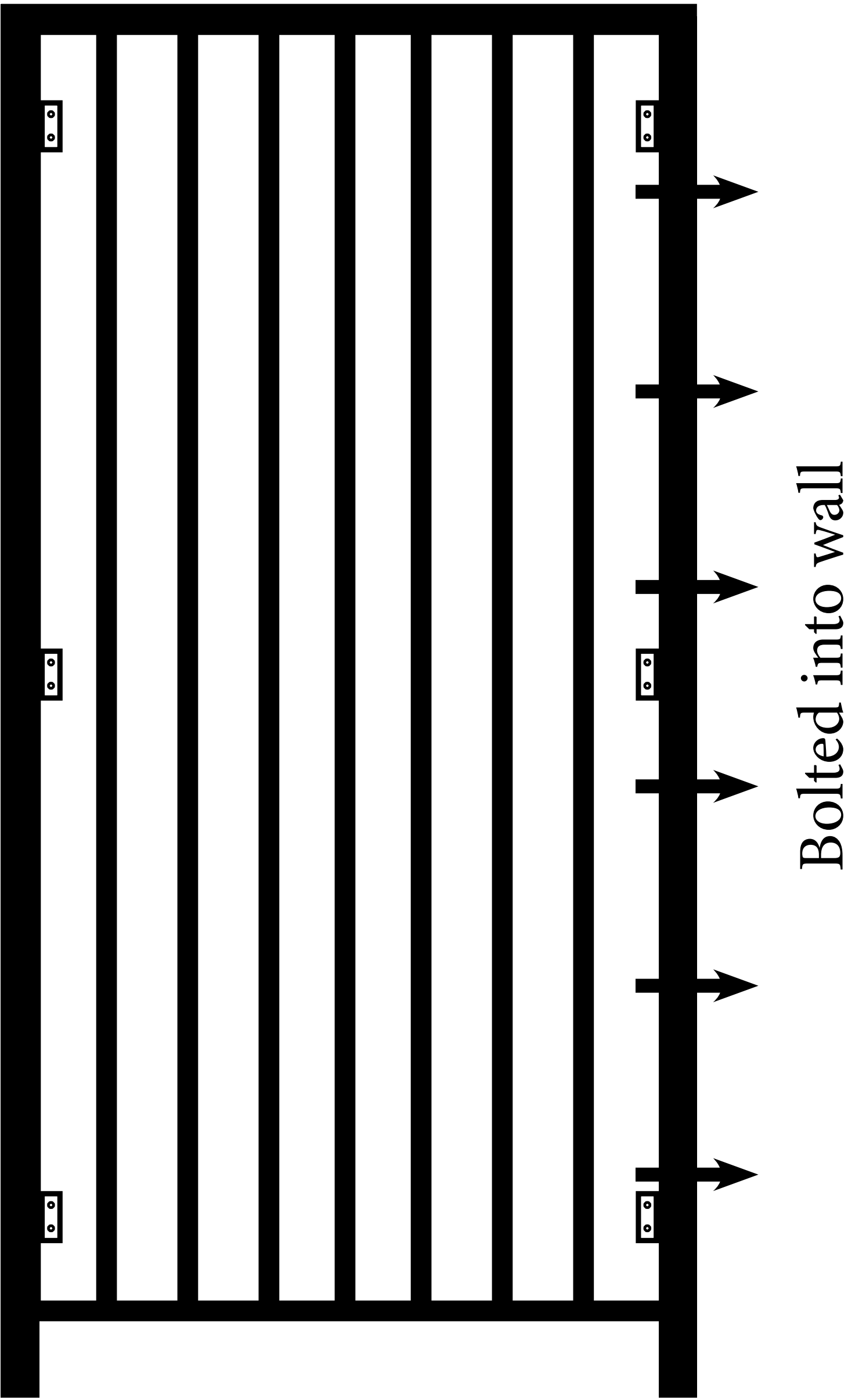


Back view

SIDE RETURN:
Side Panel



Side of Rail



Wood Panel

