

Kitchen extract fan unit to be used as a 90 degrees to be connected to the Attenuators

Kitchen fresh air inlet grill to terminate on the flat roof

450mm kitchen extract ductwork system rise from below to be connected to the odour control system and to the kitchen extract fan unit and rise to the top of the building

450mm kitchen extract ductwork system terminate 1 meters above eaves level via vertical high velocity discharge nozzle

All external raw metal forming ductwork system will be painted black

Acoustica Attenuator installed after the kitchen extract fan to achieve the insertion loss as per noise impact assesment prepared by Veta Acoustics

Kitchen extract fan unit 450GBW EC Helios , installed using flexible ductwork connections and anti vibration rubber mounts and isolators to eliminate vibration levels

Odour filtration unit as per odour assessment report OD76596, the filtration system consist of , 2 No disposable pre-filter G4 ,highly efficiently in removing filtering oil and grease particles , followed by Air clean extra duty carbon filter unit & Casing, carbon filters use panels of activated carbon to remove the malodorous gases within the commercial kitchen extract duct through the process of chemical adsorption, to give dwell time of 0.4sec

150mm kitchen fresh air ductwork system rise to the flat roof above

450mm kitchen extract ductwork system rise to the ground floor

150mm kitchen fresh air ductwork system rise to the ground floor above

450mm kitchen extract ductwork rise from below

450mm Kitchen extract ductwork system rise to the flat roof above

Kitchen extract ductwork system from below

Kitchen air Supply ductwork system from below

Kitchen fresh air supply fan unit Flakt woods 150 Espada inline fan , installed using flexible ductwork connections and anti vibration rubber mounts and isolators to eliminate vibration levels

Acoustica Attenuator installed after the kitchen air supply fan to achieve the insertion loss as per noise impact assesment prepared by Veta Acoustics

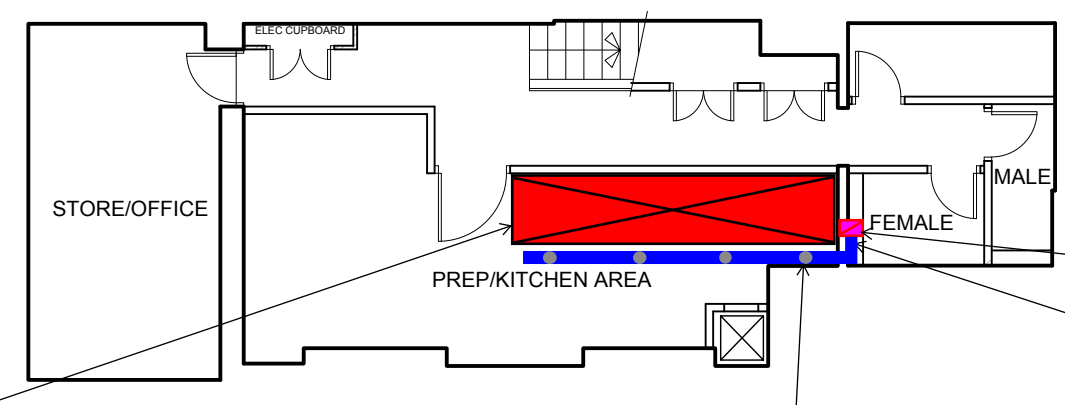
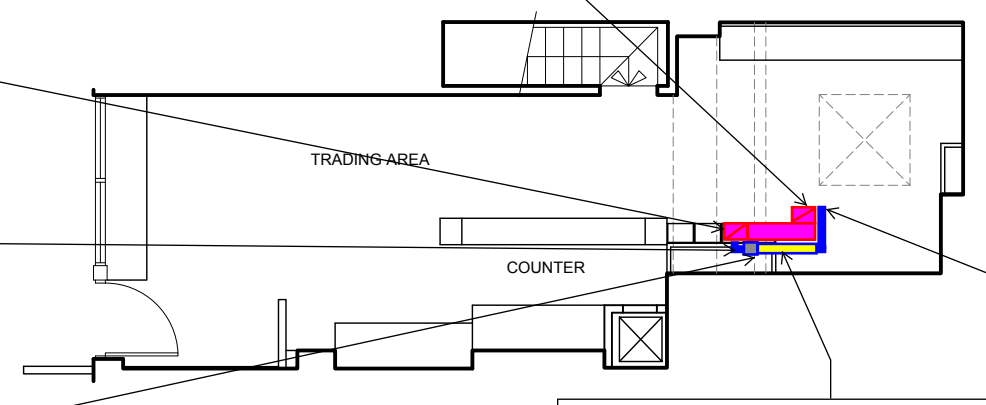
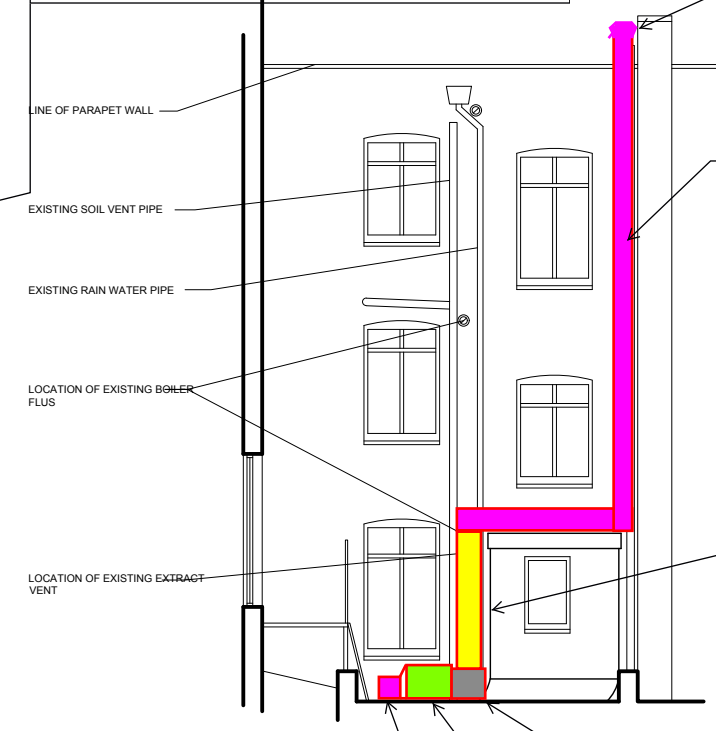
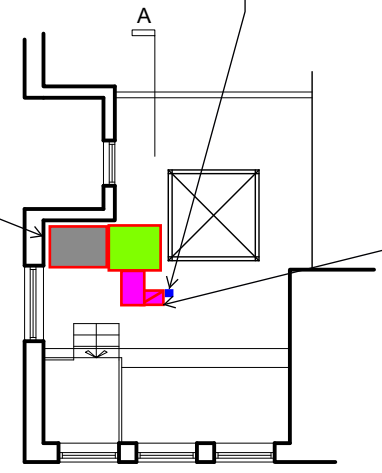
Air diffuser grills to provide fresh air supply back into the kitchen area

ROOF LAYOUT

GROUND FLOOR LAYOUT

BASEMENT LAYOUT

SECTION A



Kitchen extract wall mounted canopy hood

revision	date	details	init	revision	date	details	init

FAN RESCUE
 Fan rescue Ltd Ability House, Unit 129, 121 Brooker Road, Waltham Abbey EN9 1JH
 Tel: 0203 308 2936 • E-mail: enquiries@fanrescue.co.uk • www.fanrescue.co.uk

client KRIMAS LTD			job IN PARMA 10 CHARLOTTE PLACE LONDON W1T 1SH		
job no. A21.027	drawing no. 200	revision -	drawing title Proposed kitchen extraction and ventilation system		
date 9/7/2021	scale @ A1 1.50	drawn Imp	checked Imp	status	