

3.5 Twist Pavilion—

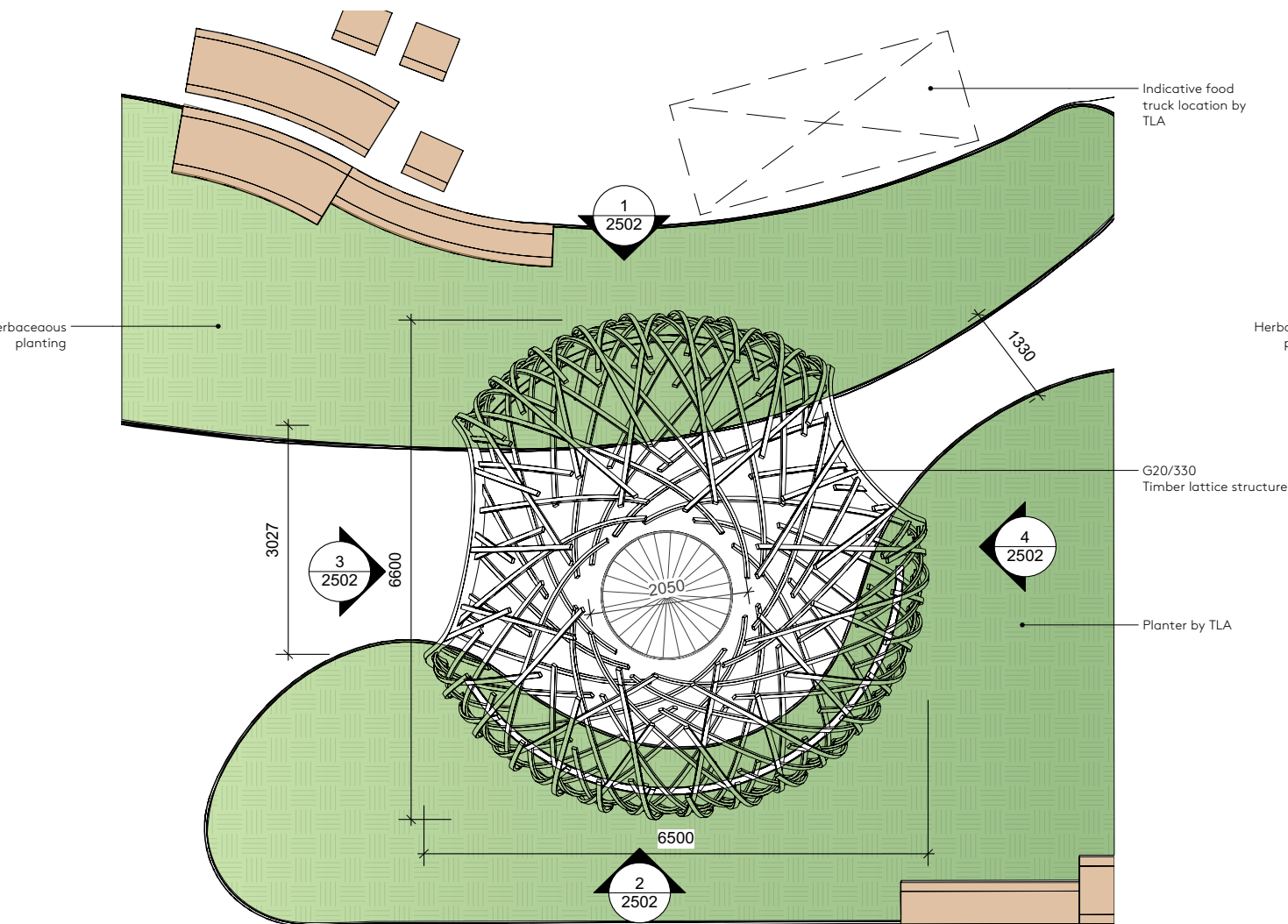


3.5 Twist Pavilion—

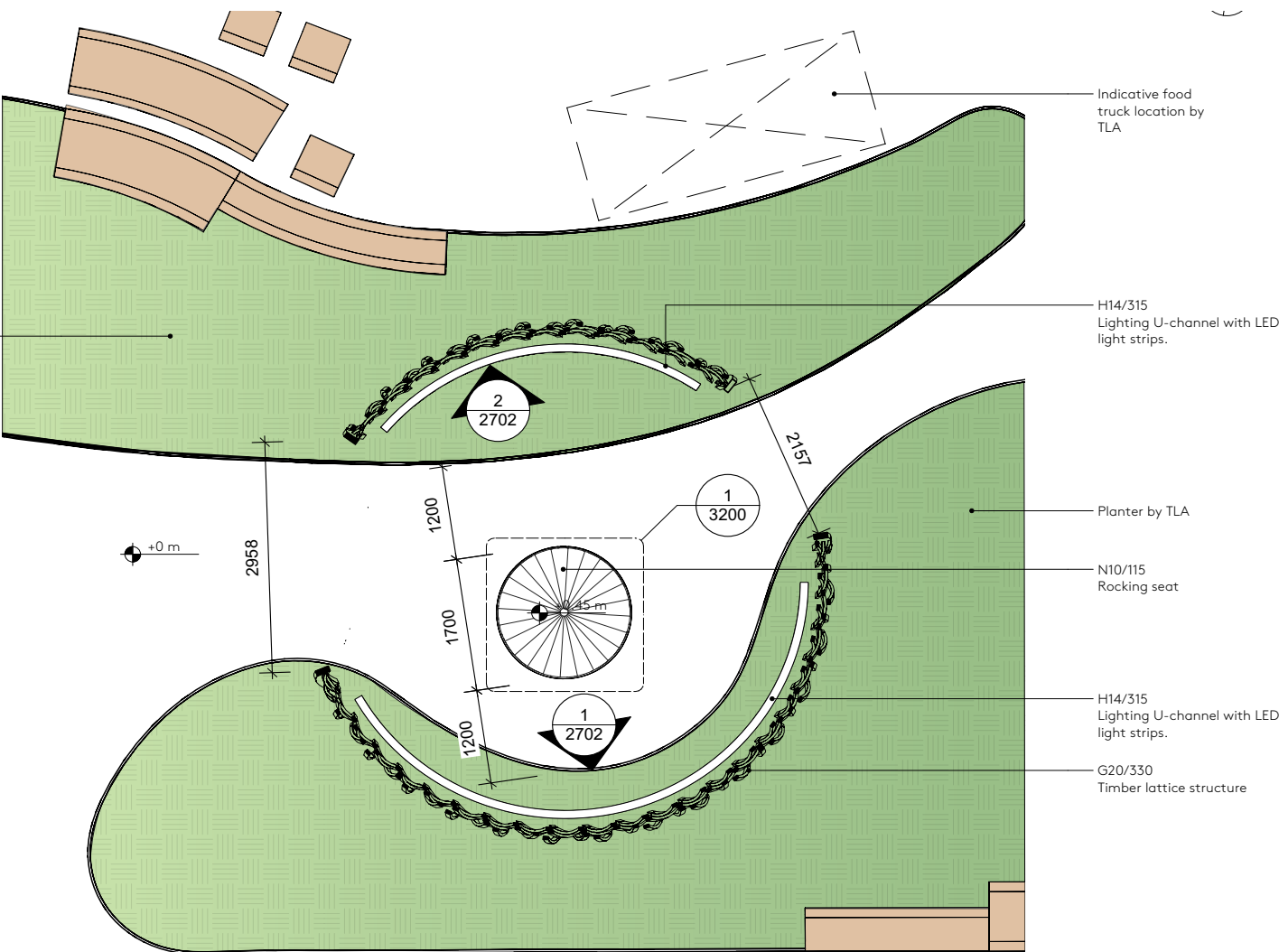
Twist Pavilion

The pavilion sits in the middle of the herb garden in close proximity to the union bar and Performance Pavilion. The space focuses on social exchange around a single seating object.

The circular seat is fixed to the ground and capable of gently rotating whilst people are seated. The seat is located slightly off-centre to the thoroughfare with a generous diameter and an oak boarded seat-top. Users can gaze up through the pavilion's oculus which is aligned directly above the seat.



01. Twist Pavilion Roof Plan



02. Twist Pavilion GA Plan

3.6 Performance Pavilion—

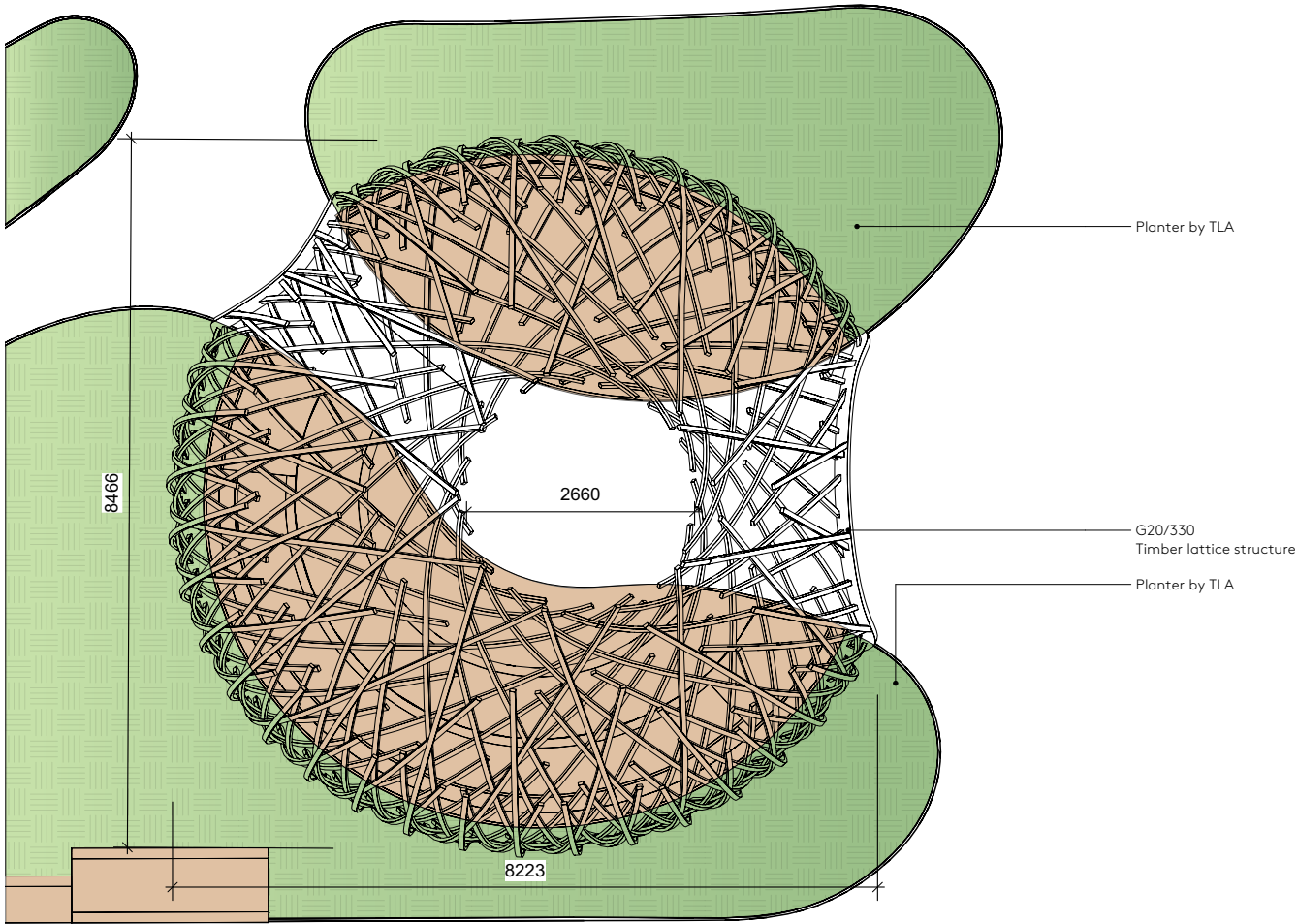


3.6 Performance Pavilion—

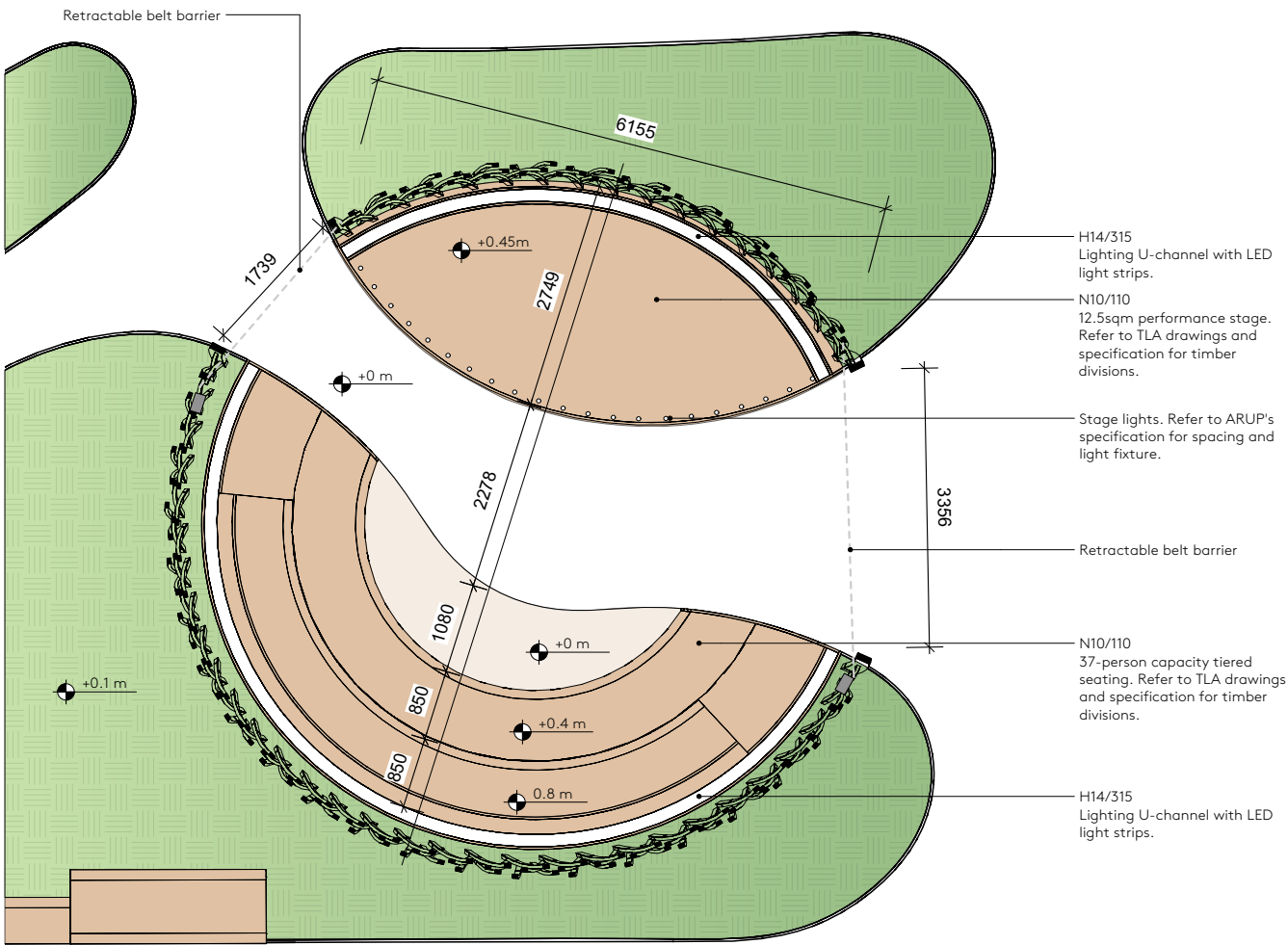
Performance Pavilion

This pavilion is located to the east of Osnaburgh Place adjacent to the Union Bar and 350 Euston Road. It is the largest pavilion, offering a space for group assembly and performances. It offers a generous stage platform on the north side and two-level seating inside the lattice on the south side. The benches are generous in depth to allow people to be seated above each other, recline, or arrange themselves in small groups.

The concentric seating arrangement allows for users to face the stage during a performance, as well as face one another when there is not a performer active in the space.



01. Performance Pavilion Roof Plan



02. Performance Pavilion GA Plan