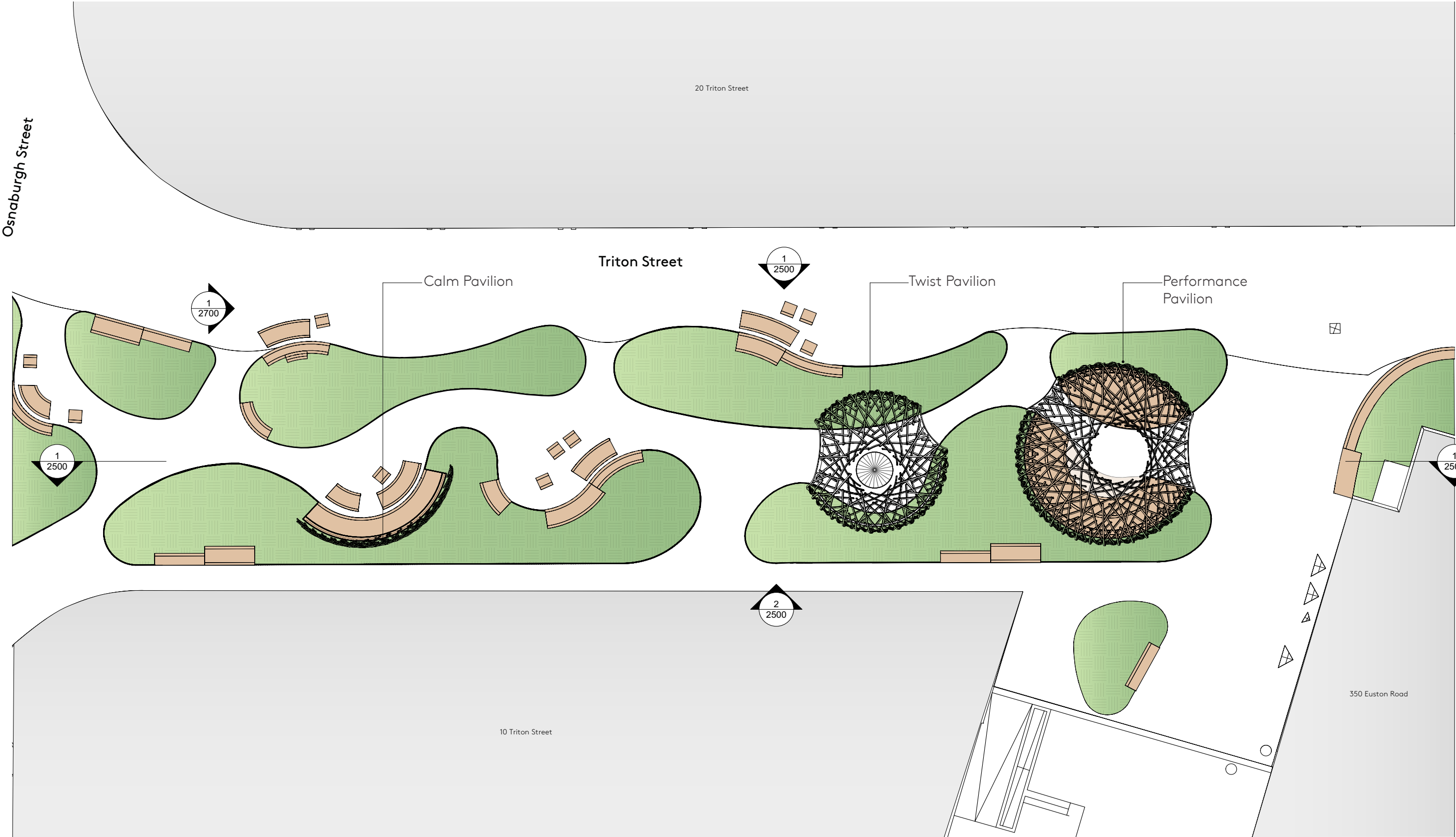
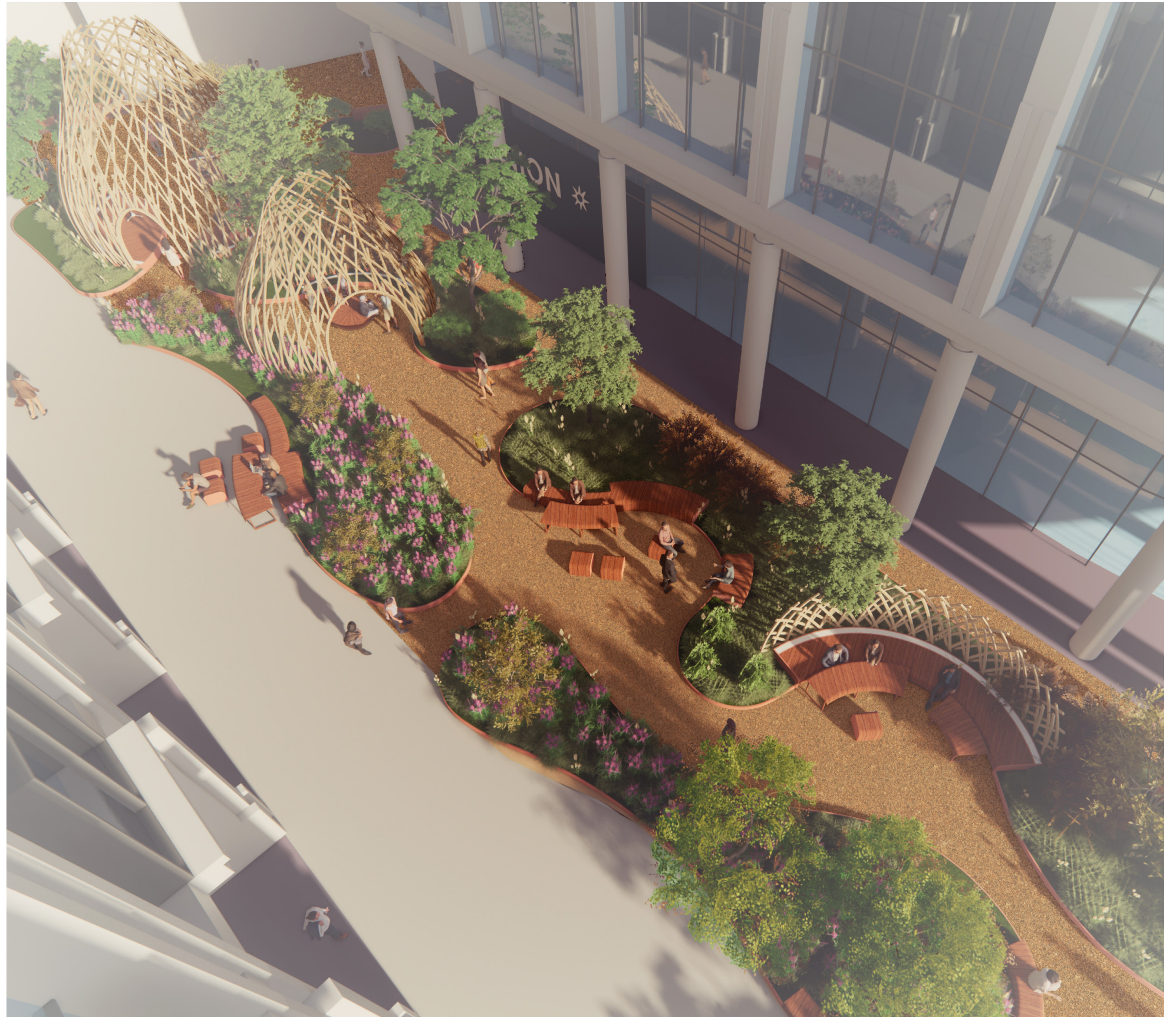


3.2 Functional Layouts—



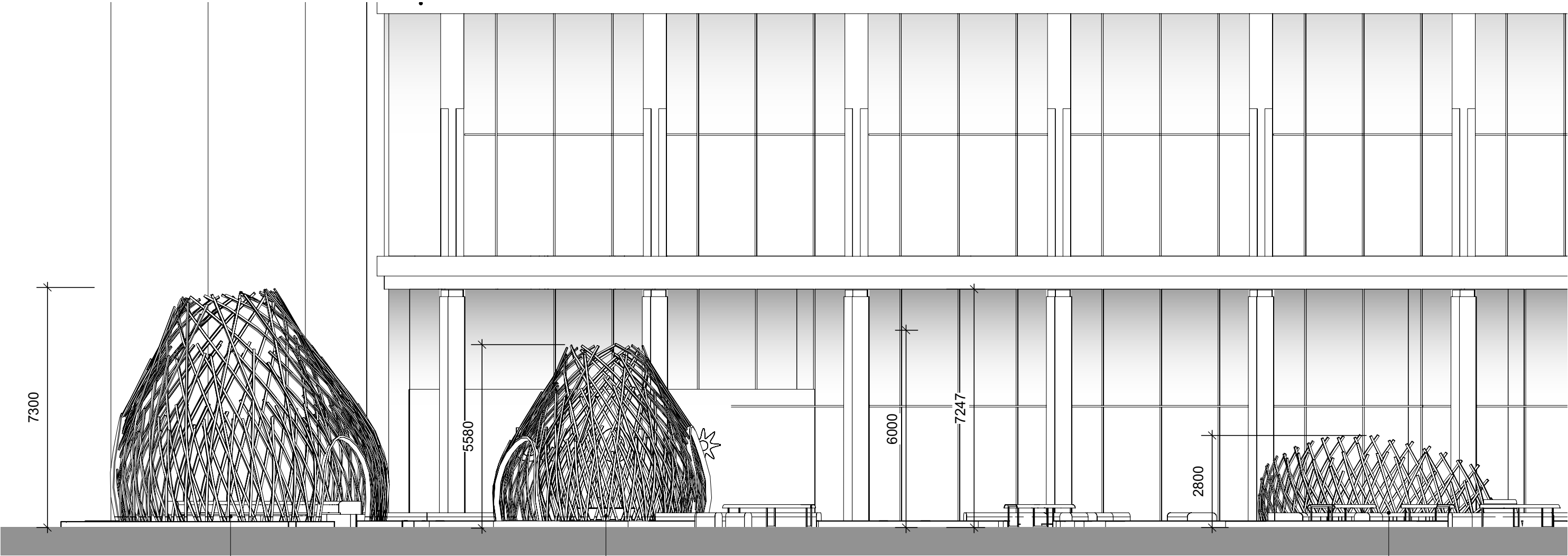
01. Site plan

3.2 Functional Layouts—

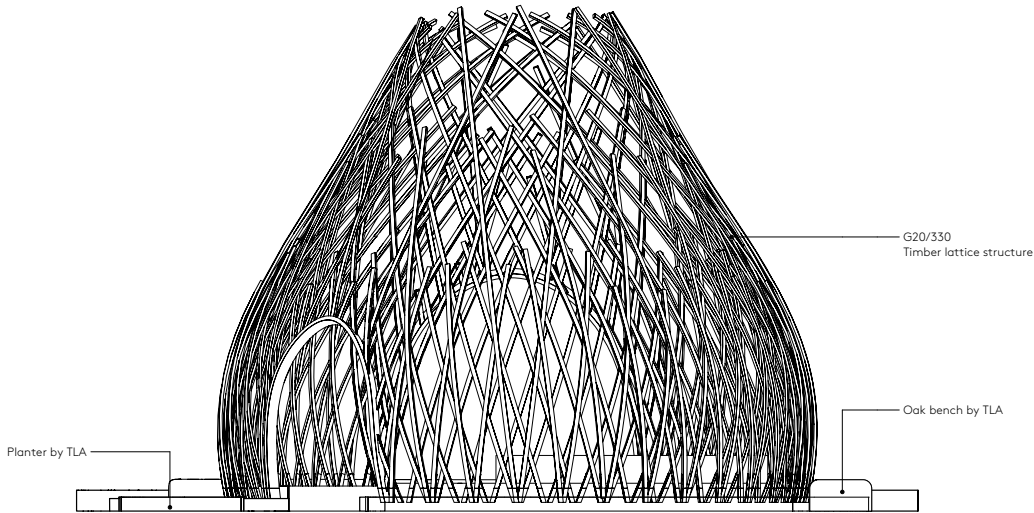


01. View from 20 Triton Street office floors

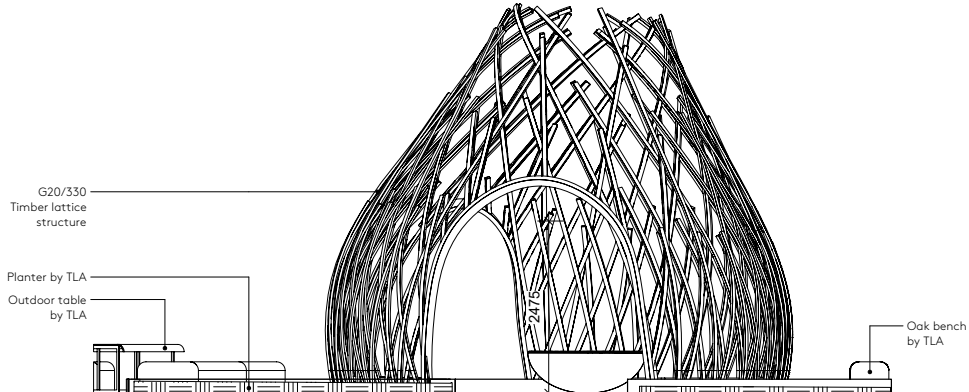
3.3 Elevations—



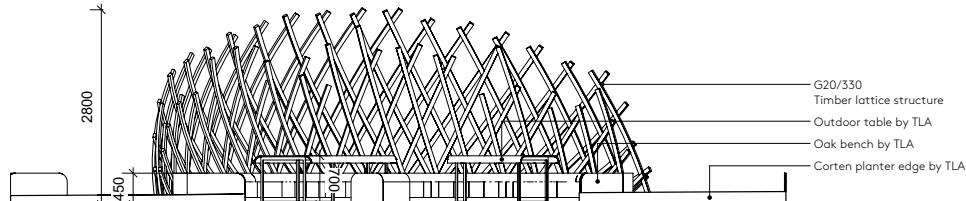
Ø1. Triton Street southern elevation



Ø2. Performance Pavilion west elevation



Ø3. Twist Pavilion west elevation



Ø4. Calm Pavilion south elevation

3.4 Calm Pavilion—



01. View of 'calm' seating area

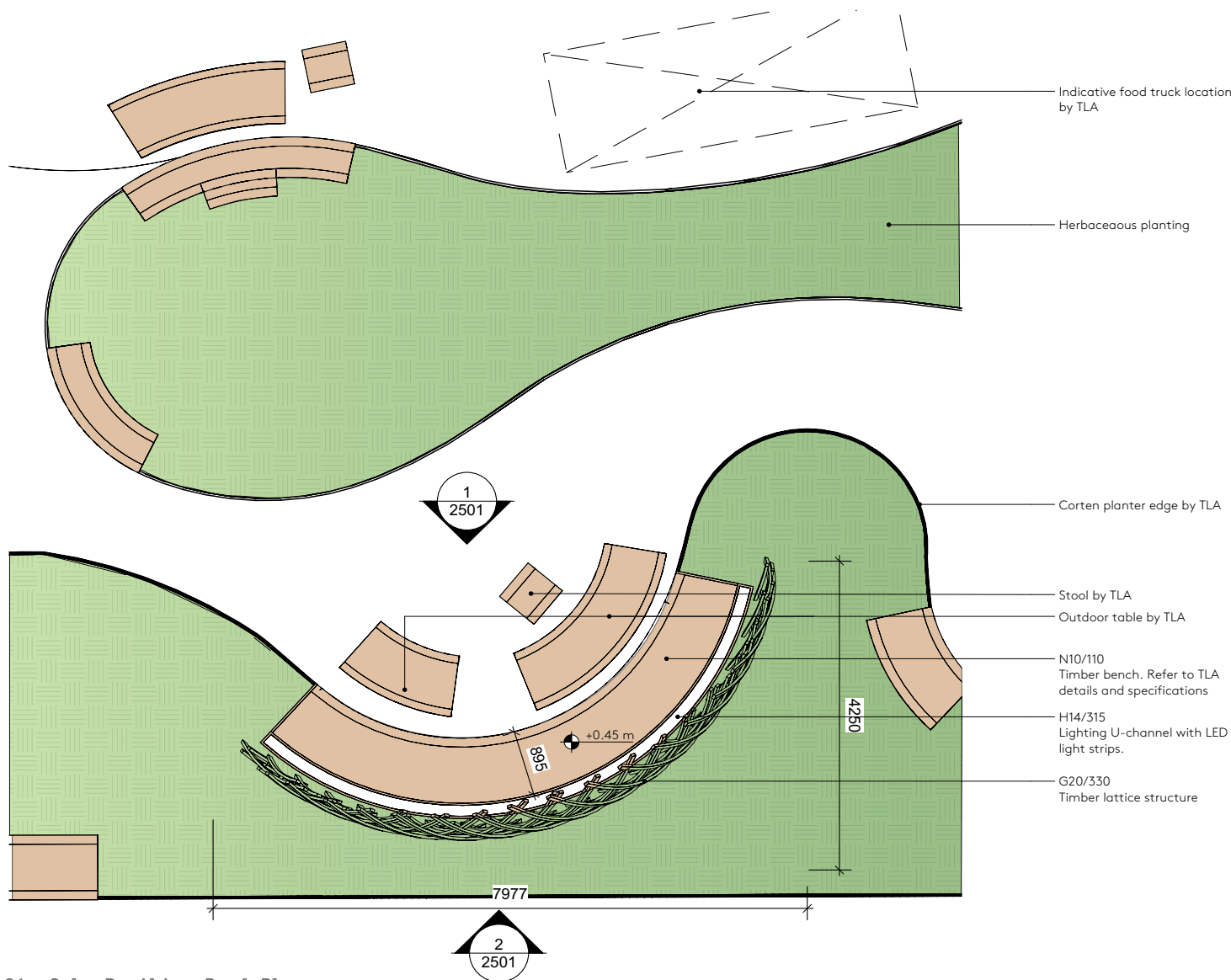
3.4 Calm Pavilion—

Calm Pavilion

The first pavilion is located to the west of Osnaburgh Place. We have designed it for smaller groups to congregate and to give users the space for quiet reflection. Loose furniture complements the fixed benches to allow people to change the environment.

This pavilion is semi-circular with a continuous bench that runs around the concave perimeter. This allows people to engage with the herb garden whilst maintaining sight lines on to other pavilions.

The low height of this pavilion increases the sight lines into Triton Street. It also helps keep sightlines looking out of Triton Street clear of any structures. This keeps views on to Marlybone Road clear.



01. Calm Pavilion Roof Plan