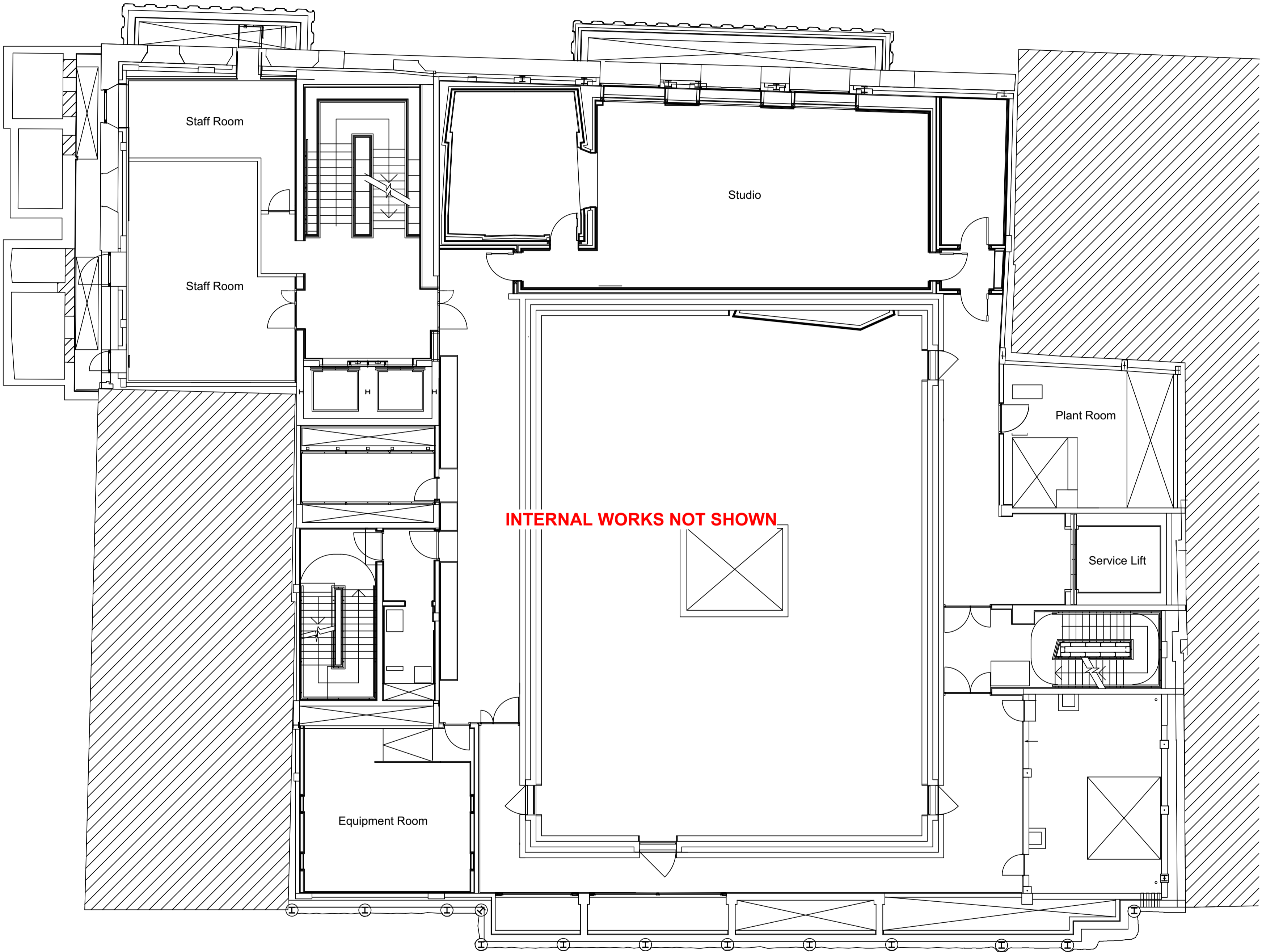


Endell Street



Short's Gardens

Betterton Street

Upper Basement Plan - Demolition
Scale: 1:100



GENERAL NOTES.

© Buckley Gray Yeoman Limited

All dimensions to be checked on site prior to commencement of any works, and/or preparation of any shop drawings.

Sizes of and dimensions to any structural elements are indicative only. See structural engineers drawings for actual sizes / dimensions.

Sizes of and dimensions to any service elements are indicative only. See service engineers drawings for actual sizes and dimensions.

This drawing to be read in conjunction with all other Architect's drawings, specifications and other Consultants' information.

All proprietary systems shown on this drawing are to be installed strictly in accordance with the Manufacturers/Suppliers recommended details.

Any discrepancies between information shown on this drawing and any other contract information or manufacturers/suppliers recommendations is to be brought to the attention of the Architect

DO NOT SCALE FROM THIS DRAWING.

NOTES.

PL01	20/10/21	Planning Submission	WQ
REV.	DATE	NOTE	DRAWN

<div><div>BGY</div><div>BUCKLEY GRAY YEOMAN</div><div>+ 44 20 7033 9913</div><div>BGY.CO.UK</div></div>			
CLIENT PATRIZIA			
PROJECT 24 Endell Street			
DRAWING Upper Basment Plan Demolition			
SCALE 1:100 @ A1 (1:200 @ A3)		DATE Oct. 2021	
STATUS PLANNING		APPROVED RP	
DWG No. 1183_PL-DM-B1			REVISION PL01