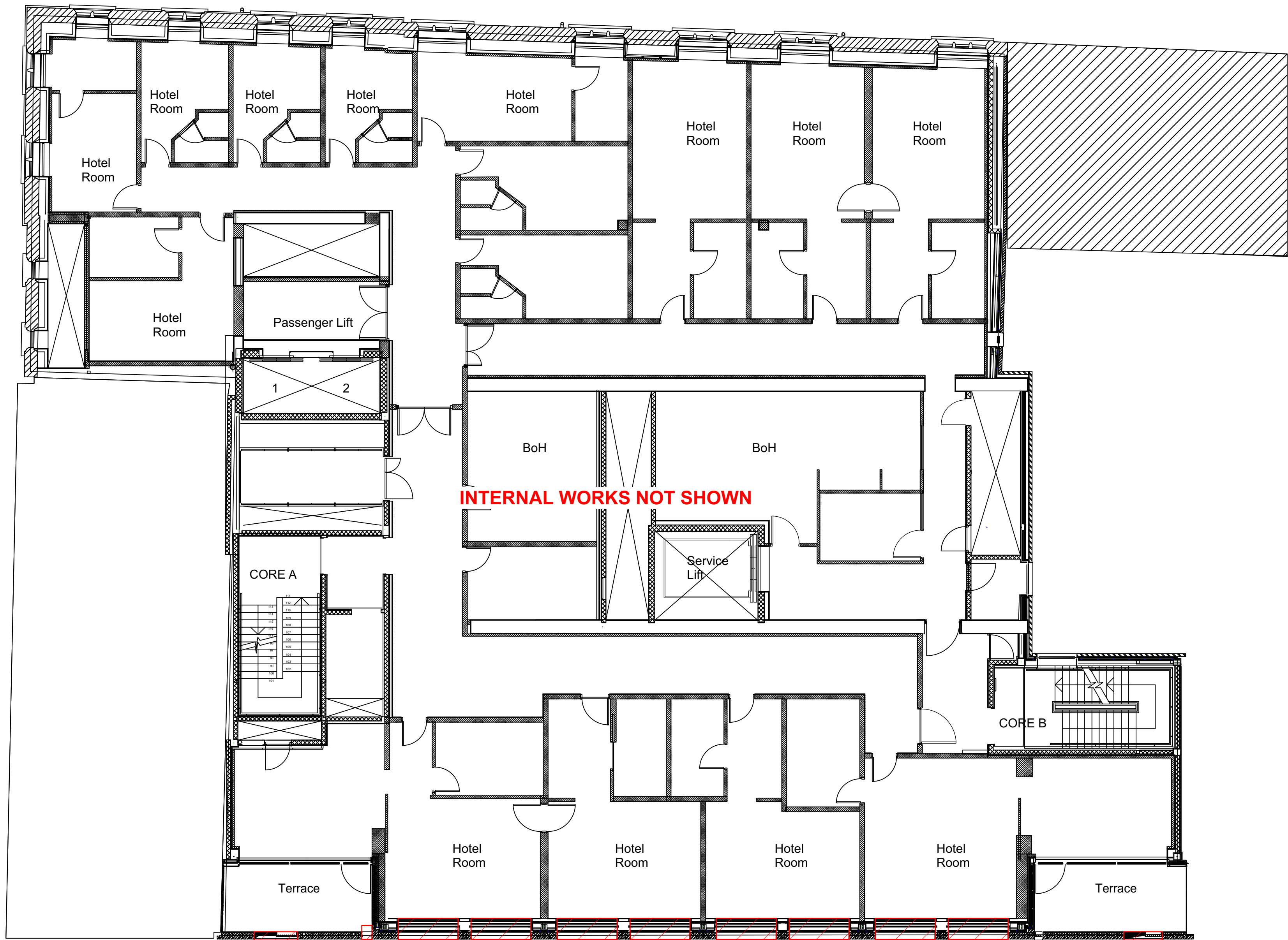


Short's Gardens

Endell Street



INTERNAL WORKS NOT SHOWN

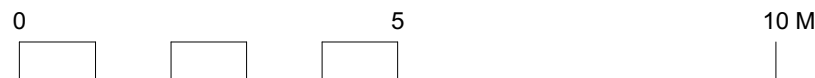
Existing metalwork & stone removed

Existing glazing & metalwork removed

Existing metalwork & stone removed

Betterton Street

Third Floor Plan - Demolition
Scale: 1:100



GENERAL NOTES.

© Buckley Gray Yeoman Limited

All dimensions to be checked on site prior to commencement of any works, and/or preparation of any shop drawings.

Sizes of and dimensions to any structural elements are indicative only. See structural engineers drawings for actual sizes / dimensions.

Sizes of and dimensions to any service elements are indicative only. See service engineers drawings for actual sizes and dimensions.

This drawing to be read in conjunction with all other Architect's drawings, specifications and other Consultants' information.

All proprietary systems shown on this drawing are to be installed strictly in accordance with the Manufacturers/Suppliers recommended details.

Any discrepancies between information shown on this drawing and any other contract information or manufacturers/suppliers recommendations is to be brought to the attention of the Architect

DO NOT SCALE FROM THIS DRAWING.

NOTES.

PL01 20/10/21 Planning Submission WQ

REV. DATE NOTE DRAWN

BGY
BUCKLEY GRAY YEOMAN
+ 44 20 7033 9913
BGY.CO.UK

CLIENT
PATRIZIA

PROJECT
24 Endell Street

DRAWING
**Third Floor Plan
Demolition**

SCALE DATE
**1:100 @ A1 Oct. 2021
(1:200 @ A3)**

STATUS APPROVED
PLANNING RP

DWG No. REVISION
1183_PL-DM-03 PL01