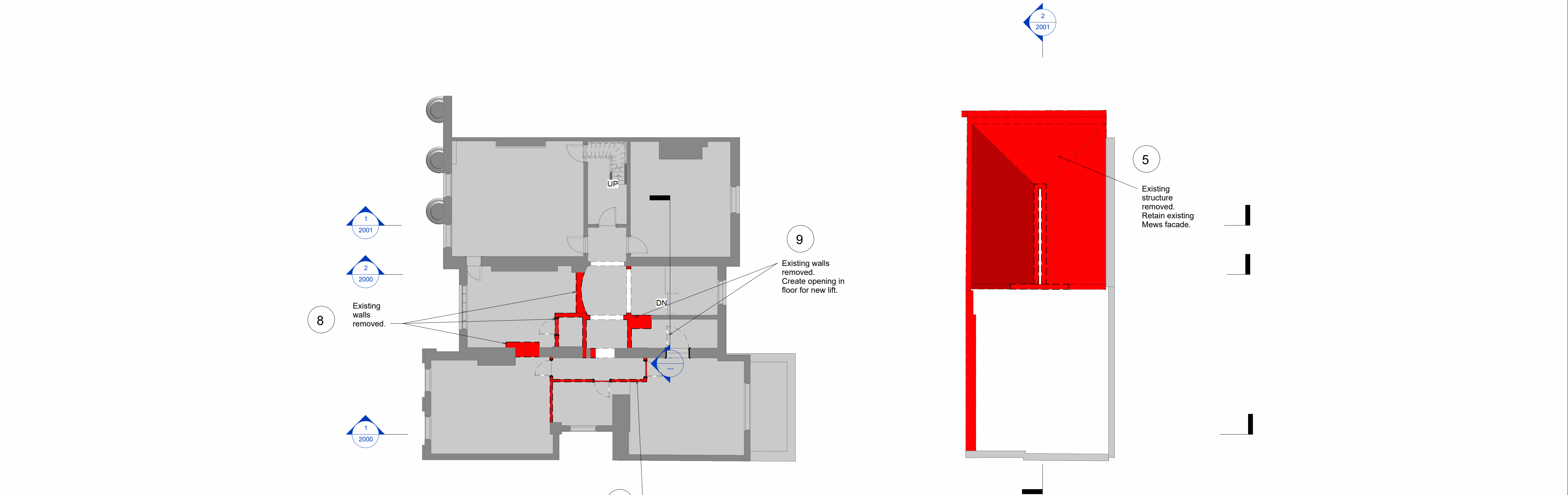


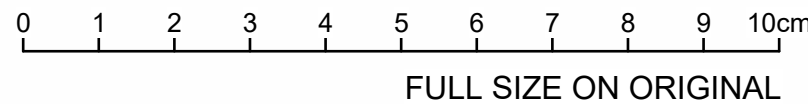
Item	Description
5	Install new steel columns, beams and temporary bracing. Remove existing internal structure of Mews Building.
8	Remove existing walls.
9	Remove existing walls. Trim around new floor opening with new beams.
10	Prop existing roof. Insert new trimming beams and create opening in roof. Remove propping.

2 Second Floor Demolitions
1 : 100



1 First Floor Demolitions
1 : 100

COPYRIGHT
The concepts and the information contained in this document are the copyright of Techniker Consulting Engineers Ltd. Use or copying of the document in whole or in part without written permission of Techniker Consulting Engineers Ltd. constitutes an infringement of copyright.



NOTES

P1	08/10/2021	MJ	MW	ISSUED FOR PLANNING
No	DATE	DRAWN	REV'D ENG.	AMENDMENT

TCH
NKR

CONSULTING
ENGINEERS

Techniker Consulting Engineers
1st Floor Ropewalks
Bond Street
Macclesfield
Cheshire
SK11 6QJ
01625 704600
mailbox@tchnkr.com

CLIENT
Iconic Properties

PROJECT
Gloucester Lodge

DRAFTER
MJ

ENGINEER

CHECKED BY
MW

TITLE
Demolition Outline Sheet 2/2

SCALE
As indicated at A1

PROJECT No
2104287

DATE
05/10/2021

AMDT
P1

DRAWING NUMBER
GA-S-1001

08/10/2021 16:51:09
A1