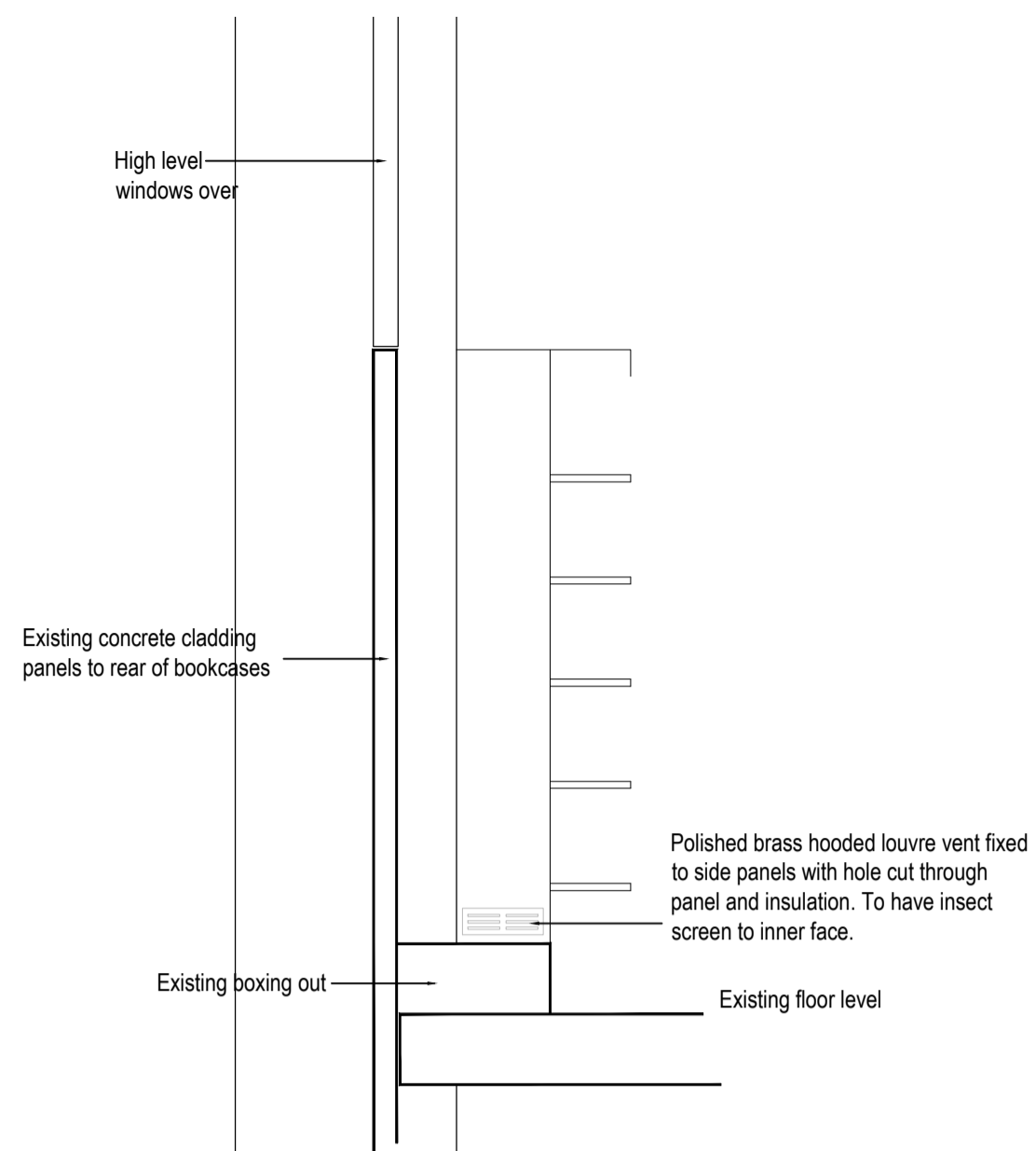
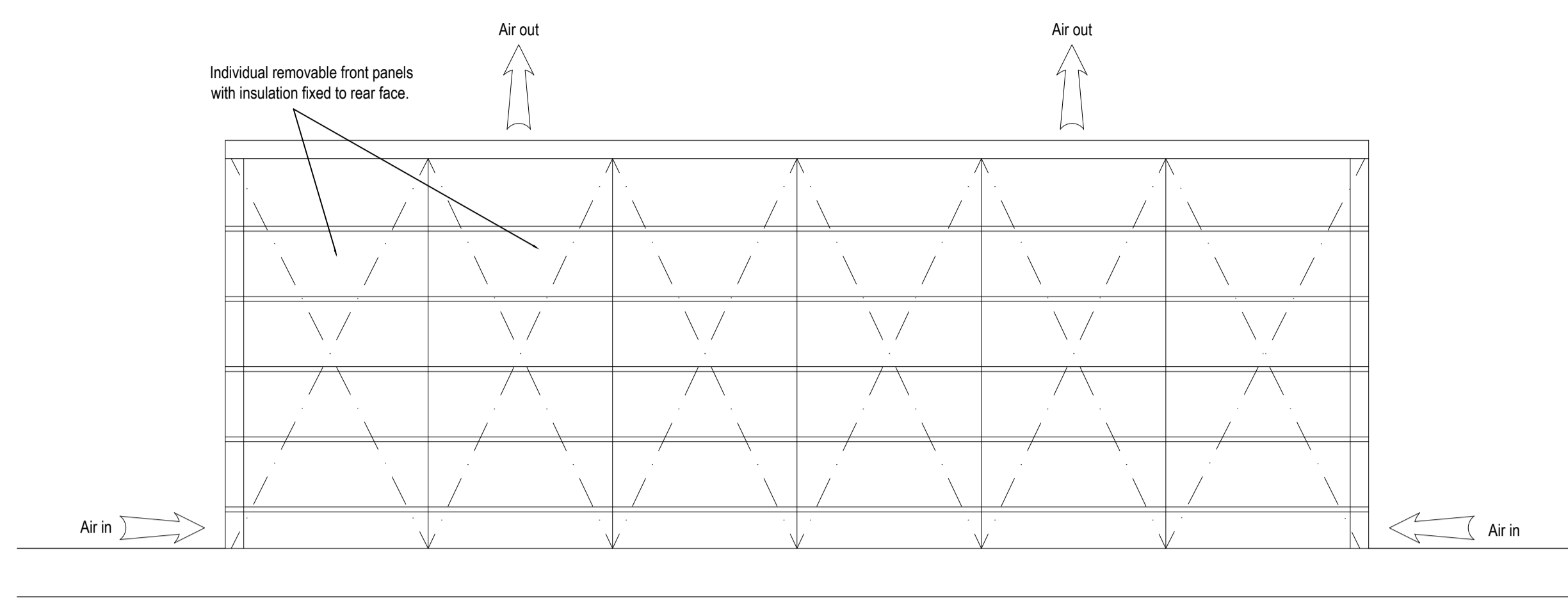
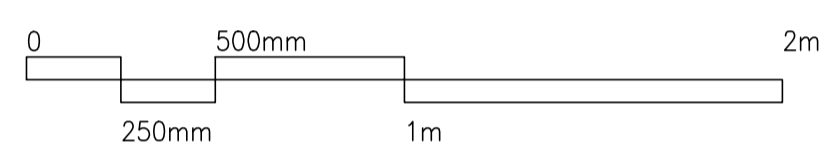


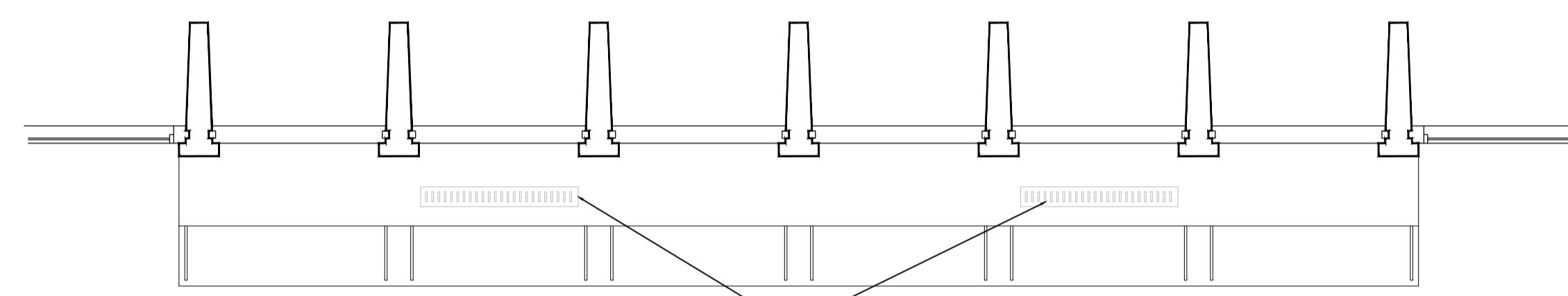
100
0 10
Millimetres



END ELEVATION TO BOOKCASE
Scale 1:20

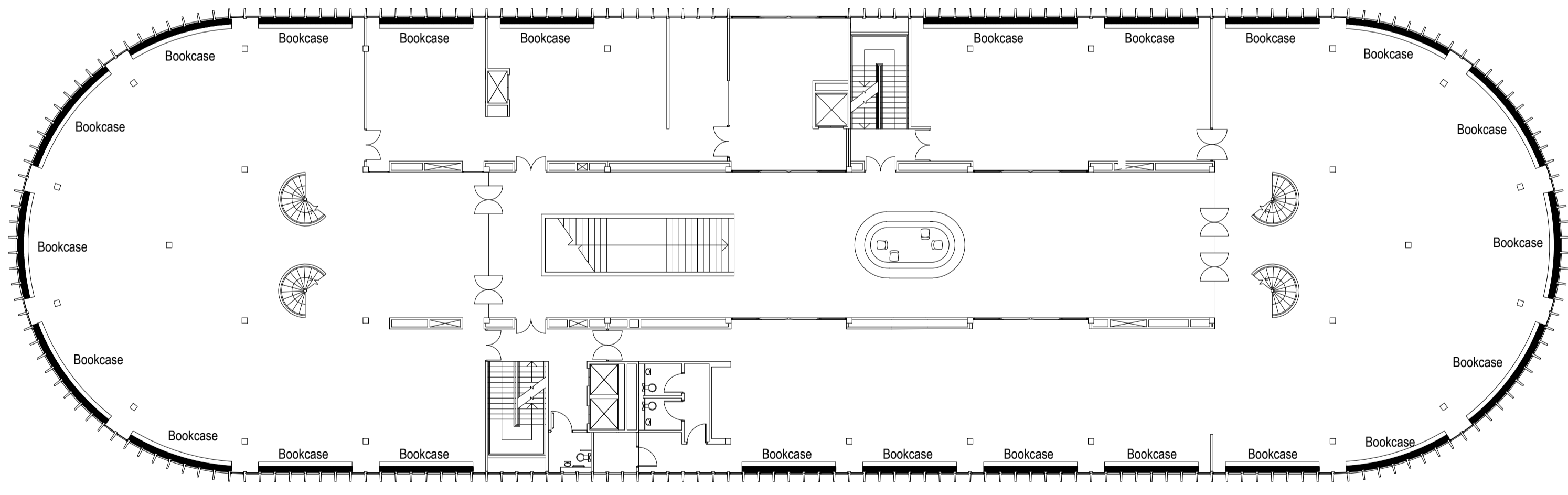


FRONT ELEVATION TO BOOKCASE

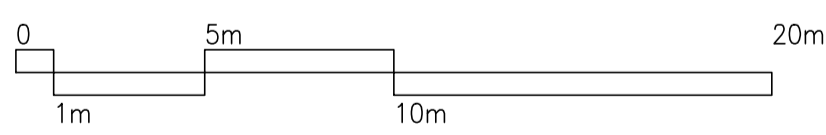


TOP VIEW TO BOOKCASE

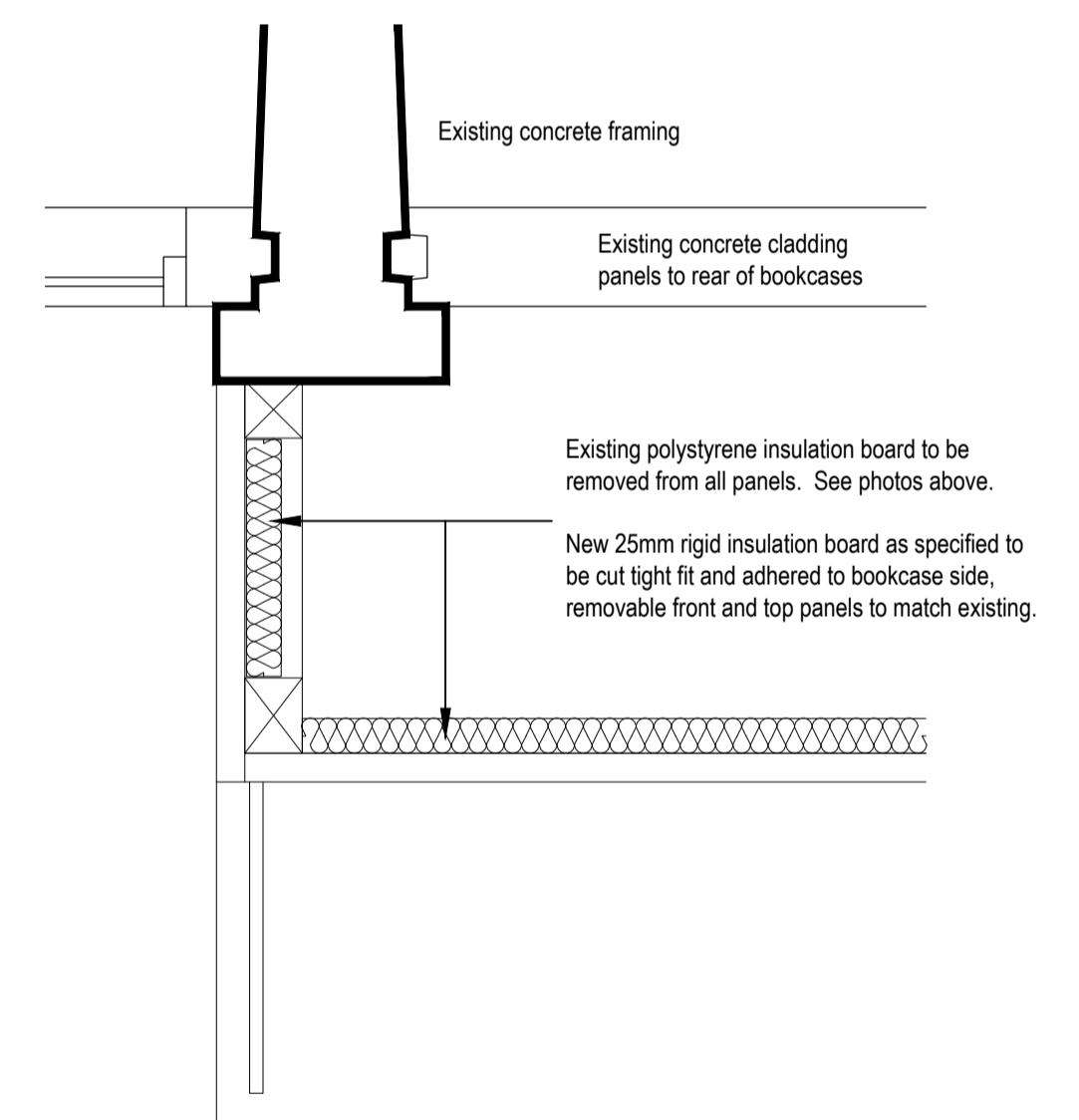
Polished brass plain slotted vent fixed to top panel with hole cut through panel and insulation. To have insect screen to internal face. One vent to every three units.



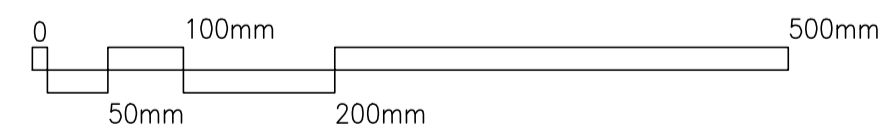
FIRST FLOOR PLAN - Showing positions of bookcases
Scale 1:200



PHOTOS SHOWING EXISTING BOOKCASE UNITS AND CONSTRUCTION



TYPICAL PLAN DETAIL TO BOOKCASE
Scale 1:5



<p>SAFETY, HEALTH AND ENVIRONMENTAL INFORMATION</p> <p>In addition to the hazards/risks normally associated with the types of work detailed on this drawing, note the following:</p>					<p>Drawing Status: PLANNING ISSUE</p> <p>Suitability: SO</p>		<p>Project Title: SWISS COTTAGE LIBRARY SALIX CARBON NET ZERO WORKS</p>				
<p>CONSTRUCTION</p>					<p>ATKINS</p> <p>London, Nova North 11 Bressenden Place Westminster, London England SW1E 5BY Tel: +44 (0)20 7121 2000 Fax: +44 (0) www.atkinsglobal.com</p>		<p>Drawing Title: EXISTING BOOKCASES TO LIBRARY PROPOSED REMEDIAL WORKS</p>				
<p>MAINTENANCE/CLEANING</p>					<p>Copyright © Atkins Limited (2013)</p>		<p>Scale: VAR, Designed: JH, Drawn: JEL, Checked: CH, Authorised: CH</p>				
<p>DECOMMISSIONING/DEMOLITION</p>					<p>Client: LONDON BOROUGH OF CAMDEN</p>		<p>Original Size: A1, Date: 17-09-21, Date: 23-09-21, Date: 28-09-21, Date: 28-09-21</p>				
<p>It is assumed that all works will be carried out by a competent contractor working, where appropriate, to an approved method statement</p>					<p>Rev. Date Description By Chk'd App'd</p>		<p>Drawing Number: 50206133-ATK-SCL-S-DE-A-4203</p> <p>Revision: P 1</p>				