

# Constraints and solutions for rooftop deployment.

The installation of effective  
rooftop mobile infrastructure

# Scenario 1.

X

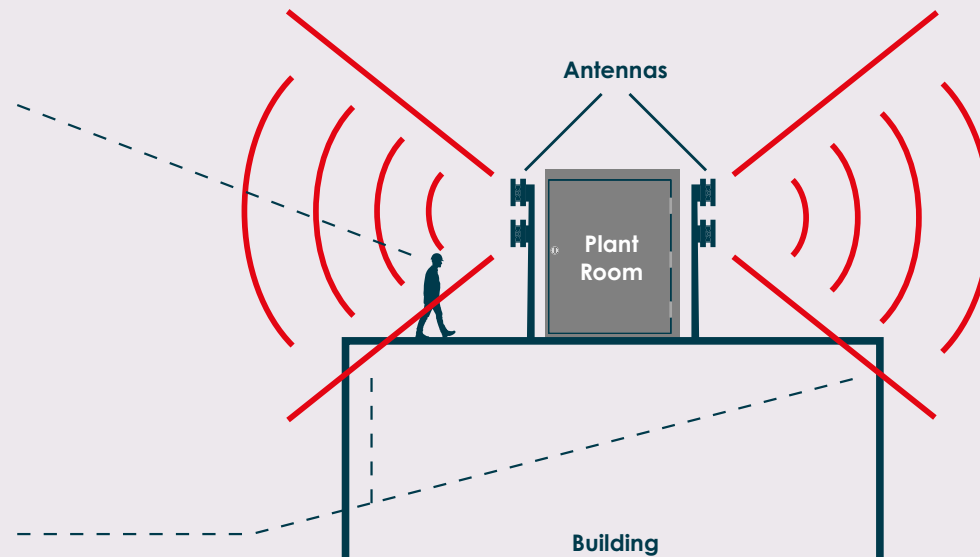
## Antennas are of low elevation and set back from the rooftop edge.

The International Commission on Non-Ionizing Radiation Protection (ICNIRP) has developed exposure limits adopted by the UK Government. All mobile network operator installations are designed to comply with the ICNIRP exposure limits as adopted in European Union directives and UK legislation.

This scenario might be considered the most visually sympathetic solution as antennas are both set back from the rooftop edge and are of lower elevation. **However, the below example is not an ICNIRP compliant design, and therefore would not be proposed.**

The person shown is within the exclusion zone – this is not ICNIRP compliant, as the antennas are too low.

With the antennas positioned here “clipping” occurs. This is when the radio frequency signal propagation from an antenna ‘clips’ the building edge and would result in exclusion zones over sections of the rooftop. This will impact radio performance and service provision to the point that the solution is not viable.



*Each Scenario is indicative and a simplified version to demonstrate the technical constraints and solutions. Although 2D was used for simplicity, antennas must be carefully sited at locations on a building to provide 360 degree coverage, and must always be ICNIRP compliant.*

# Scenario 2.

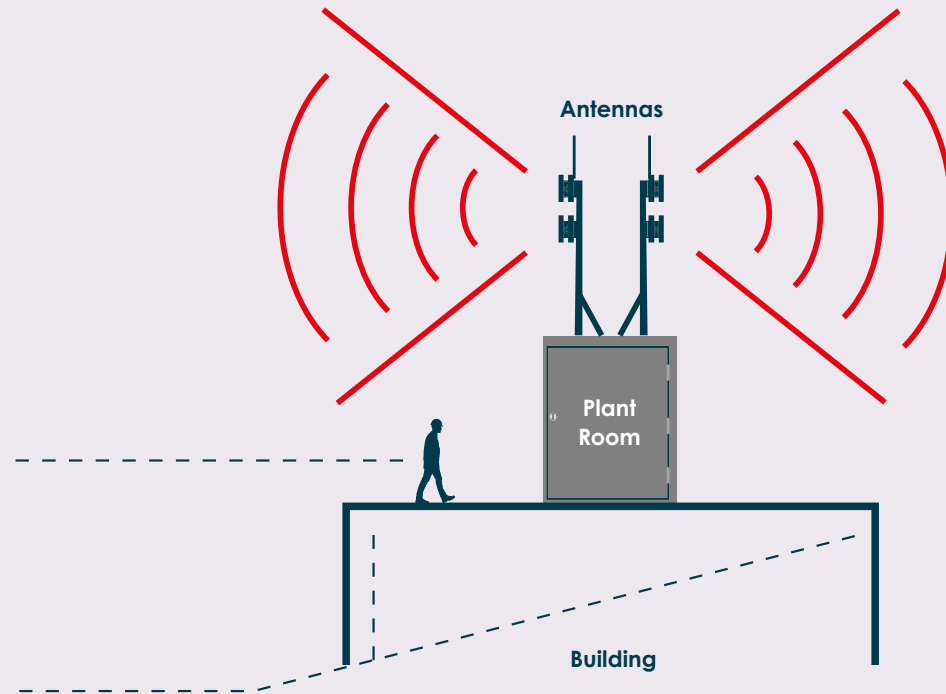


## Antennas are set back from the rooftop edge and must be elevated.

This scenario is sometimes considered a more visually sympathetic solution, as the antennas are sited away from the rooftop edge. This solution means the antennas must be placed higher, which typically requires more robust support structures, and the essential additional height and bulk can be less desirable in some situations.

The person is accessing the rooftop and is not in the exclusion zone. As the antennas are of sufficient height, there is no RF 'clipping' and the rooftop remains accessible, which may be necessary for access to plant, maintenance or fire escape. The rooftop is safe to access and this ensures that the design remains ICNIRP compliant.

No rooftop edge clipping occurs – ICNIRP compliance is achieved, and there will be no impact upon radio performance or service provision – the design solution remains viable.



# Scenario 3.



## Antennas are near edge of rooftop, but less elevation may be required.

This scenario is sometimes considered a less visually sympathetic solution as the antennas are sited on the rooftop edge. However, with this solution there is a reduced necessity for additional antenna elevation, which typically means less structural bracing is needed. The reduced necessity for additional elevation and bracing can, in practice, be the most visually sympathetic solution in some situations, albeit closer to the rooftop edge. This is especially true on medium height to tall buildings, where the natural elevation of the building takes it away from the public realm and provides sufficient antenna elevation for viability.

The person is accessing the rooftop and is not in the exclusion zone. Antennas propagate outward – siting at the edge with outward orientation means that the rooftop remains accessible and there is no rooftop 'clipping'.

ICNIRP compliance is achieved and there will be no impact upon radio performance or service provision – the design solution remains viable.

