
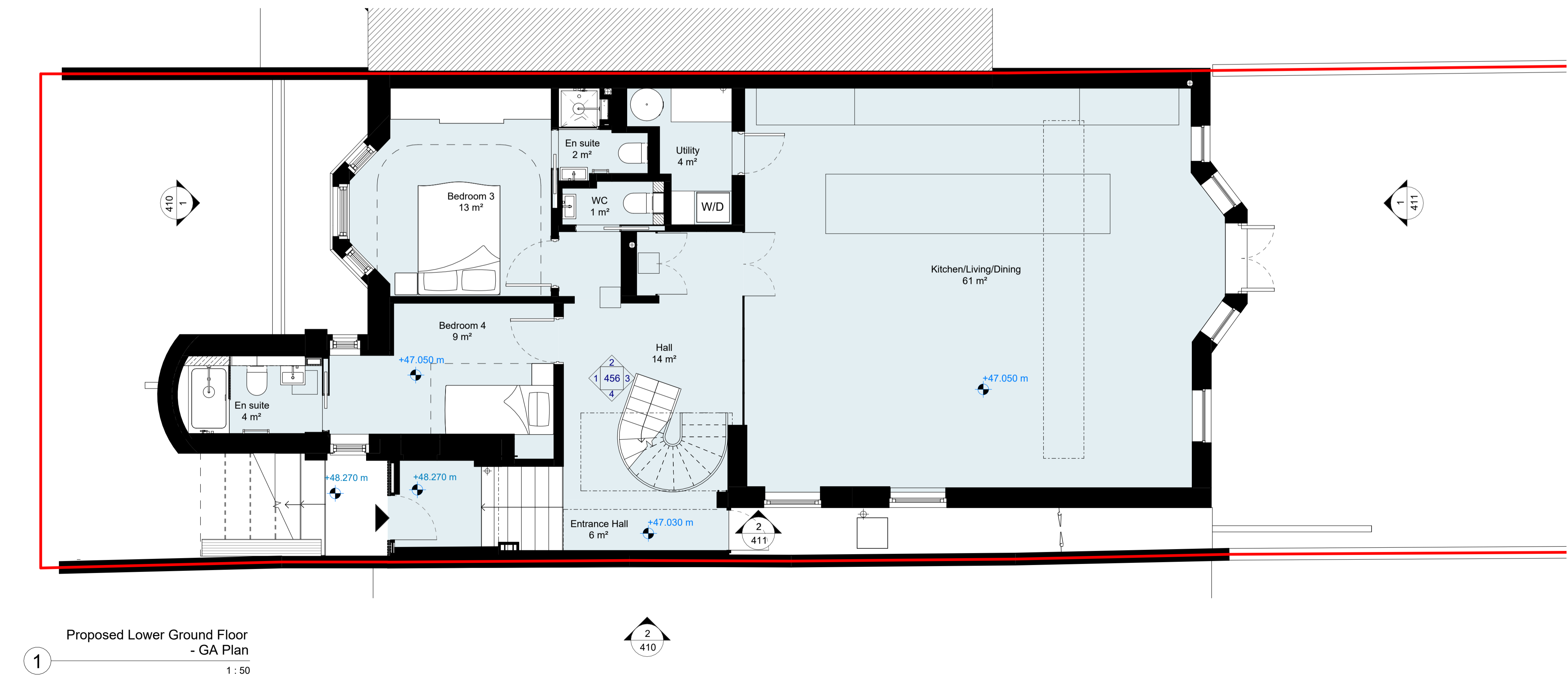
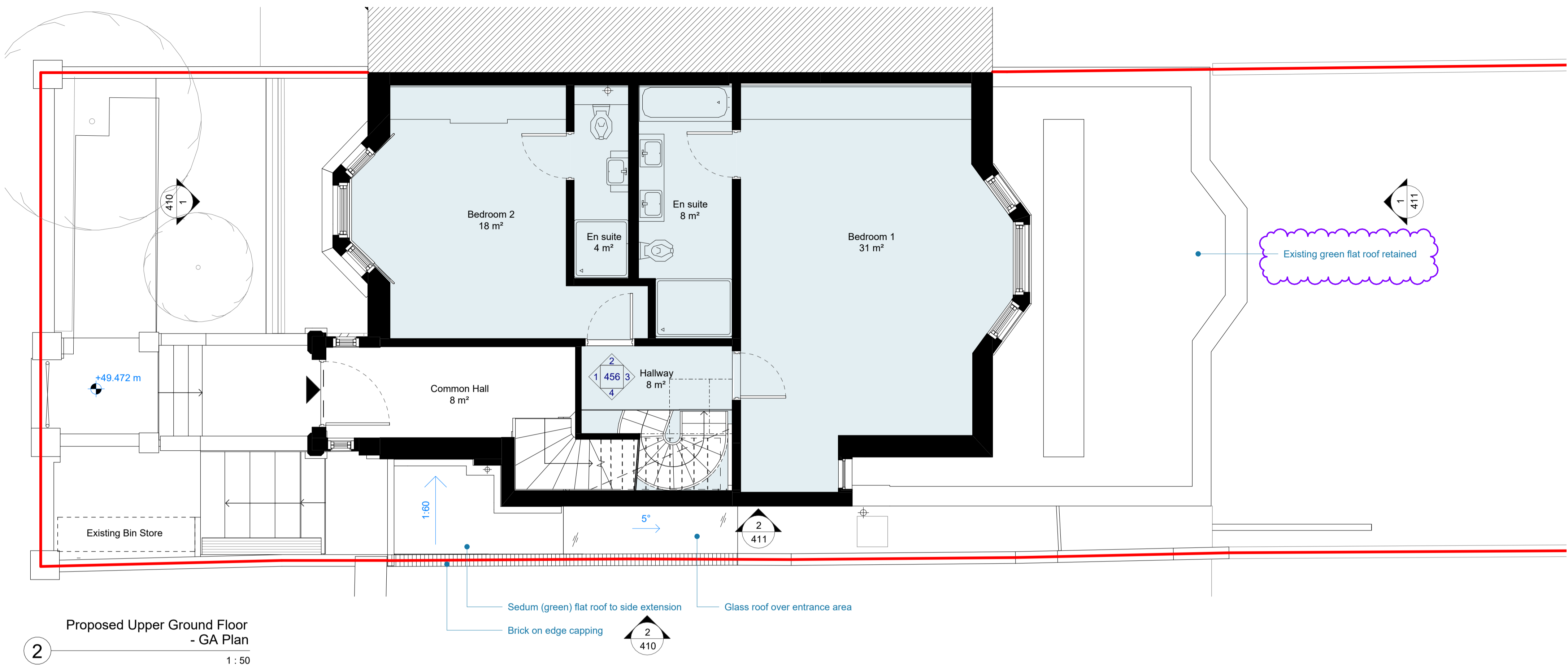


PLANNING

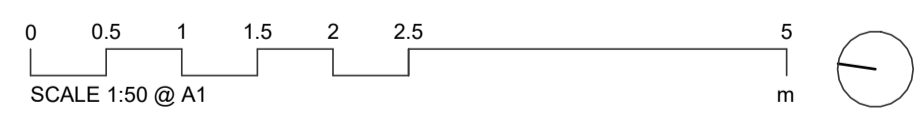
Any discrepancies must be reported to the architect before proceeding.

NOTES: This drawing is © copyright Platform 5 Architects || 

This drawing is © copyright Platform 5 Architects III



P6	21.10.21	Issued for Planning	MF
P5	11.10.21	Issued for Planning	MF
P4	25.05.21	Issued for Planning	MF
P3	10.05.21	Issued for Information	MF
P2	07.05.21	Issued for Information	MF
P1	05.05.21	Issued for Information	MF



Platform 5
architects

First Floor
217 Mare Street
London
E8 3QE

t 020 7031 5661
e info@platform5architects.com
w www.platform5architects.com

PROJECT TITLE:

117 King Henry's Road

Proposed GA Plans

FIRST ISSUE DATE:	SCALE @ A1:	SCALE @ A3:
May 2021	1:50	1:100

PROJECT NO:	DRAWING NO.:	REVISION:
21-105	(P)100	P6