



01 ELEVATION

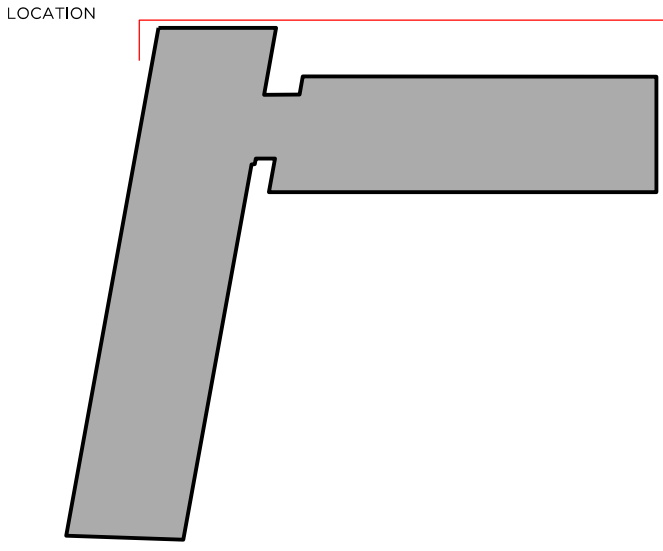
DRAWING NOTES

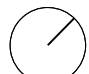
REVISION	DATE	NOTE
00	27.08.21	STAGE 03

TEAM	
CLIENT	Lazarf Investments
STRUCTURAL ENGINEER	Guardant Harmon
CIVIL ENGINEER	GLP
MEP ENGINEER	GLP
COST CONSULTANT	CN Associates
PROJECT MANAGER	Cushman Wakefield
APPROVED INSPECTOR	Saks
CDM ADVISOR	Shawi Engineering
LANDSCAPE DESIGN	Studio ONB
FIRE ENGINEER	Jensen Hughes
LIGHTING DESIGN	Studio 29

GENERAL NOTES

1. Do not scale from this drawing.
2. All dimensions to be checked on site by the contractor and such dimensions to be his responsibility.
3. Report all drawing errors, omissions and discrepancies to the architect.
4. This document may be issued in an uncontrolled CAD format to enable others to use it as background information to make alterations and/or additions. In that instance the file will be accompanied by a PDF version. It is for those making such alterations and additions to ensure that they make use of current background information. Gibson Thornley Architects accepts no liability for any such alterations or additions to the background information or arising out of changes to background information which occur prior to alterations of additions being made.





GIBSON THORNLEY

Gibson Thornley Architects Limited
No. 4 The Hangar
Perseverance Works
25-27 Hackney Road
London E2 7NX

www.gibsonthornley.com
info@gibsonthornley.com
+44 (0)20 7729 7064

JOB TITLE
MAPLE HOUSE
DRAWING TITLE
PROPOSED NORTH ELEVATION

DRAWN BY	CHECKED	SCALE	STATUS
BG	BG	1:100@A1 1:200@A3	INFORMATION

PROJECT	ZONE	TYPE	CLASSIFICATION	DRAWING NO	REVISION
20024	-	AL	[00]	211	00