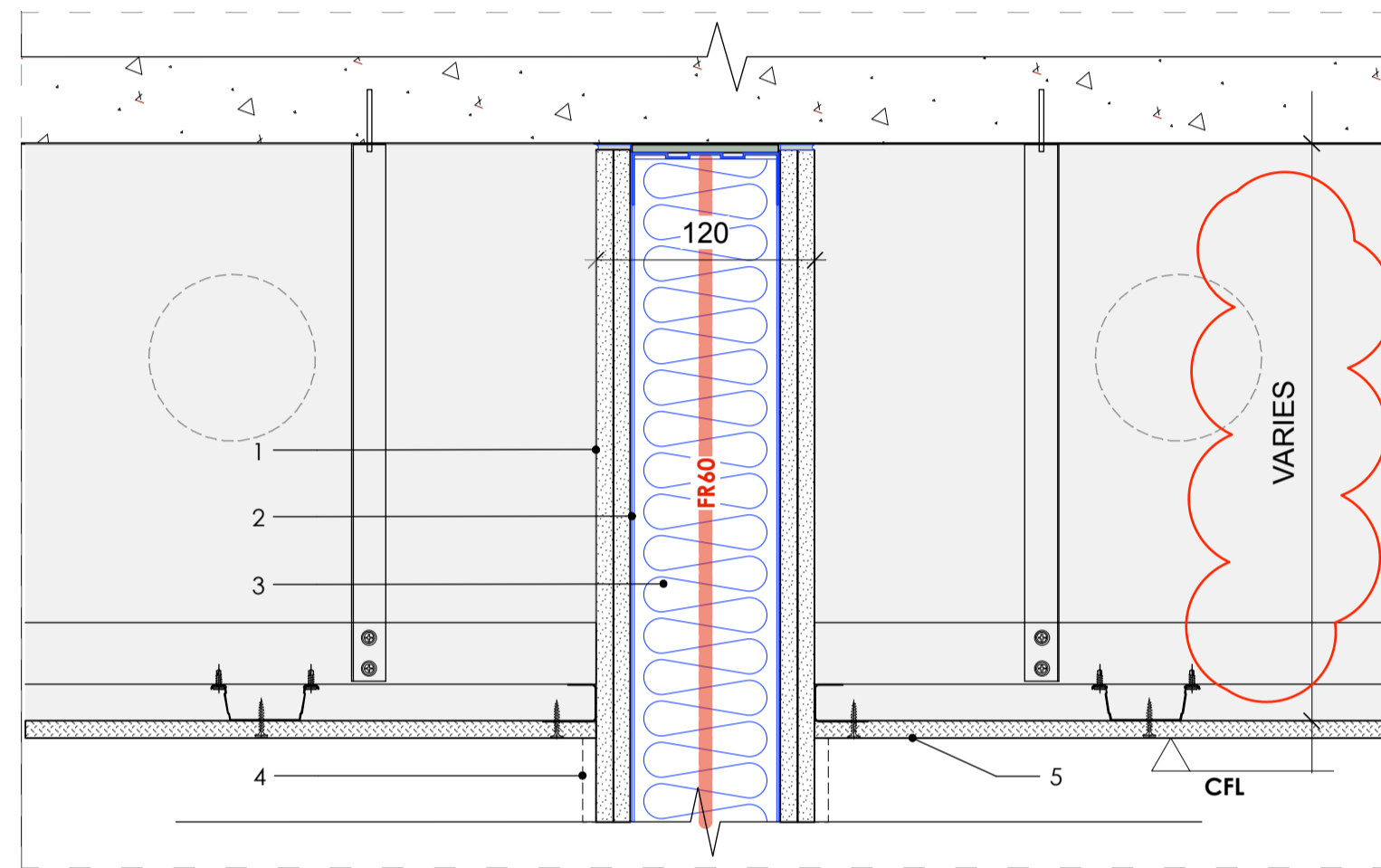


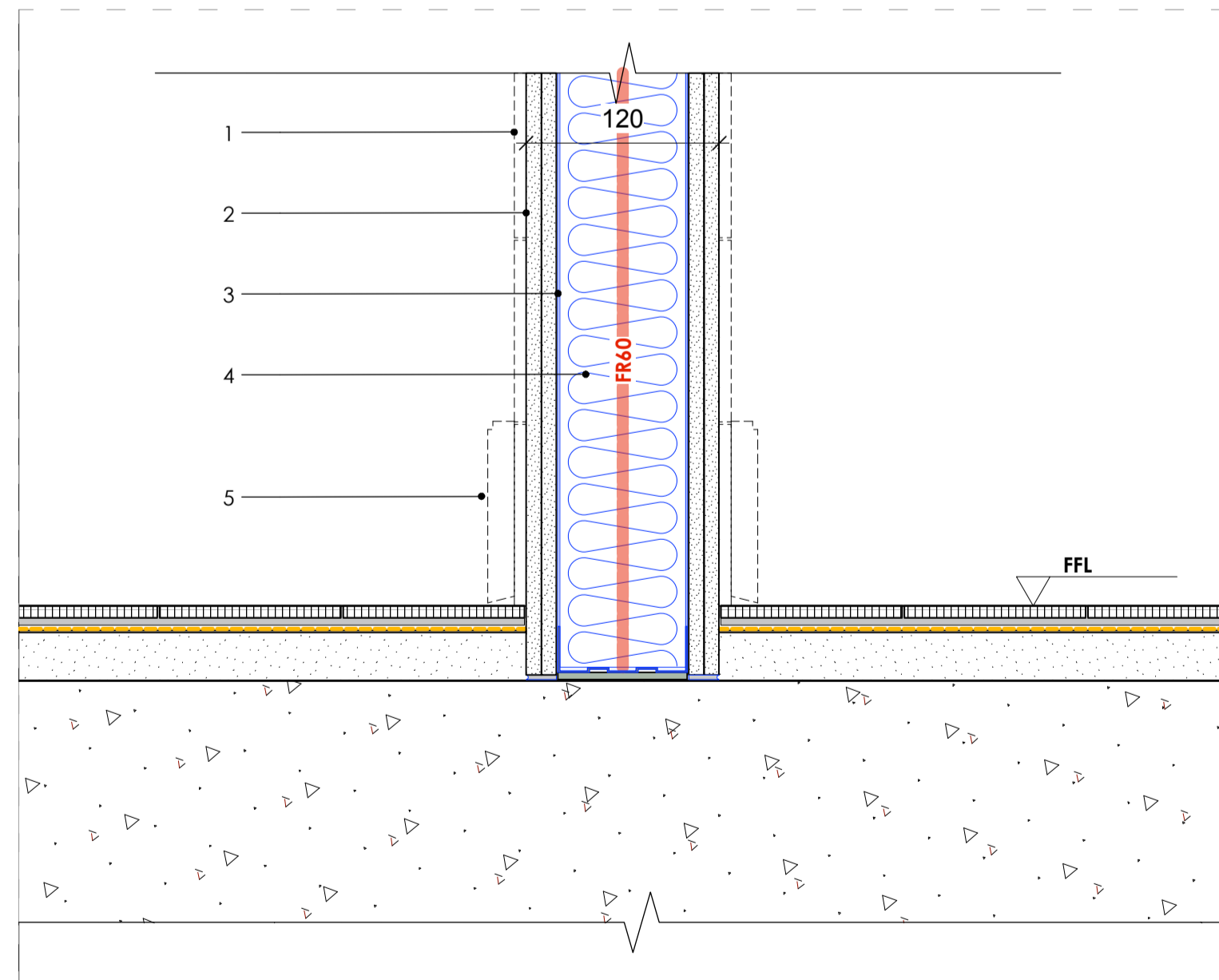
DT04: Internal wall build-up partition between Ladies & Male WC
Scale 1:5 Plan

- 1 - Indicative Tiling Area to Redhouse Specification
- 2 - Two 12.5mm Rigidur taped and skimmed
- 3 - Gypframe 70 °C Stud @600 ctrs
- 4 - 60mm Isover Ultimate Piano Insulation
- 5 - Refer to Toilet Details 350 Series
- 6 - NBS Spec: K10/115
- 7 - NB - Wall to achieve 60min fire integrity



DT04: Internal wall build-up partition between Ladies & Male WC
Scale 1:5 Ceiling Section

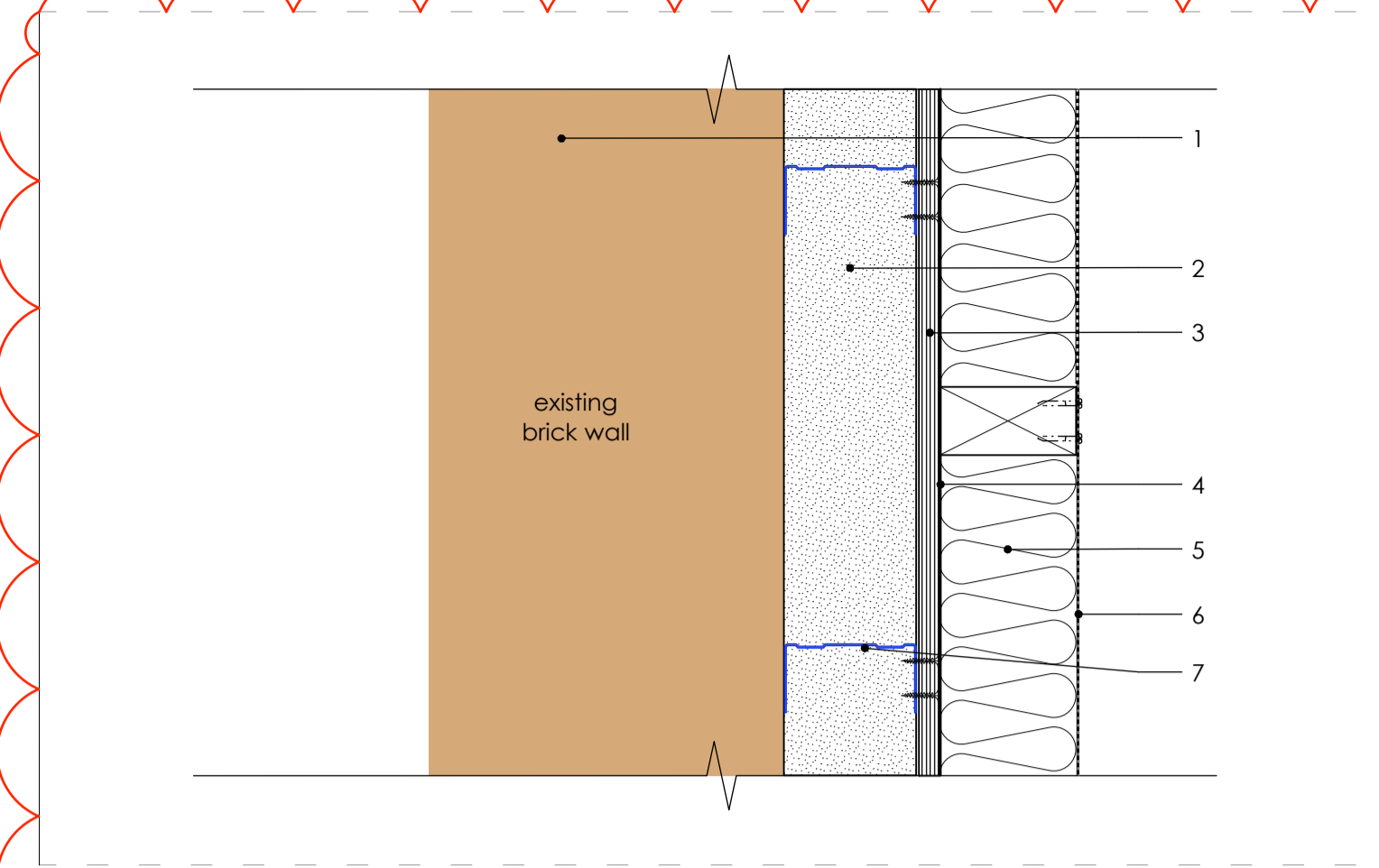
- 1 - Two 12.5mm Rigidur taped and skimmed
- 2 - Gypframe 70 °C Stud @600 ctrs
- 3 - 60mm Isover Ultimate Piano Insulation
- 4 - Indicative Tiling Area to Redhouse Specification
- 5 - Refer to generic ceiling details: AHA-KKR-DET-720
- 6 - Refer to toilet details 350 Series
- 7 - NBS Spec: K10/115
- 8 - NB - Wall to achieve 60min fire integrity



DT04: Internal wall build-up partition between Ladies & Male WC
Scale 1:5 Floor Section

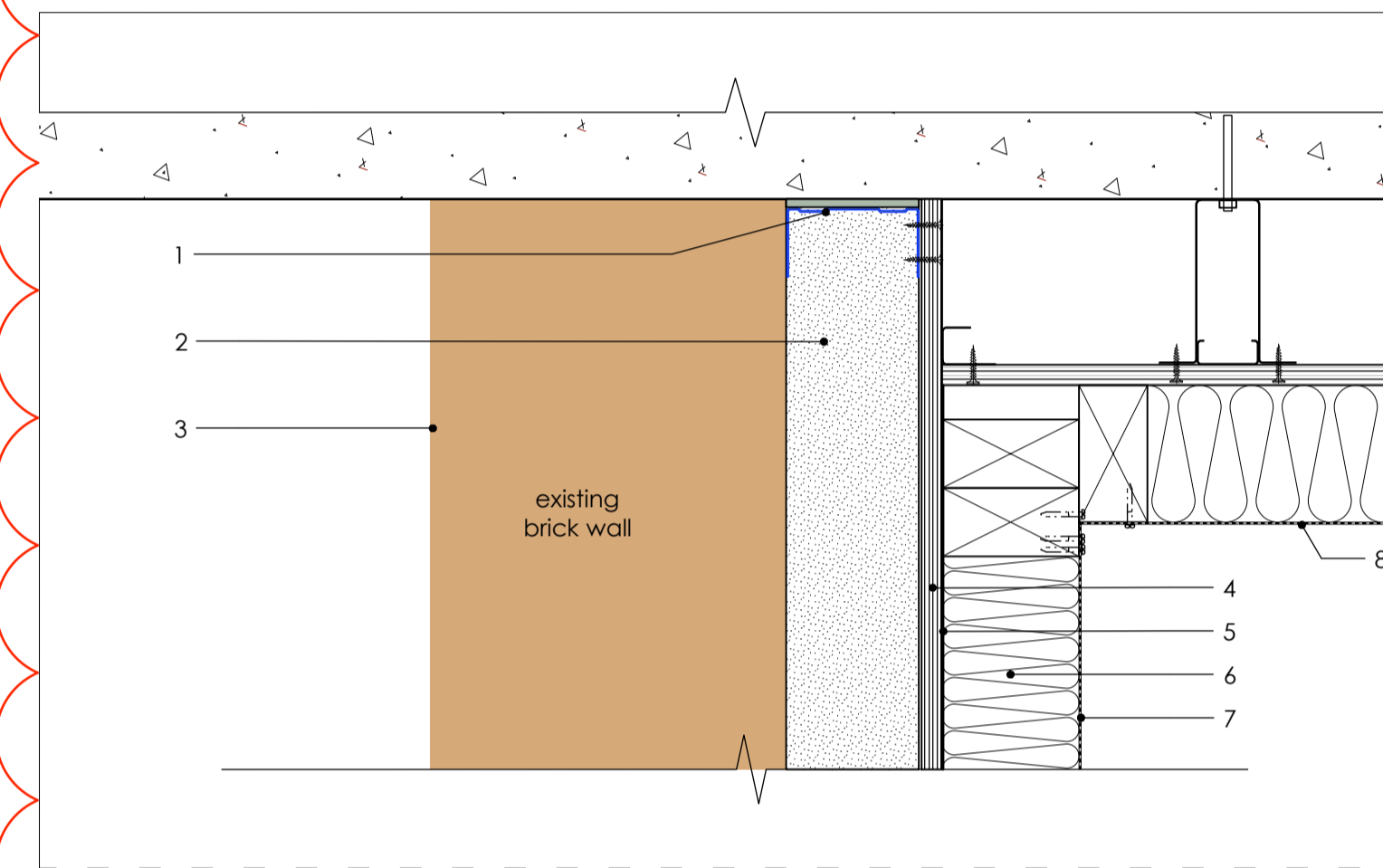
- 1 - Indicative Tiling Area to Redhouse Specification
- 2 - Two 12.5mm Rigidur taped and skimmed
- 3 - Gypframe 70 °C Stud @600 ctrs
- 4 - 60mm Isover Ultimate Piano Insulation
- 5 - Skirting to match original throughout
- 6 - Refer to Typical Floor Type Details: AHA-KKR-DET-419-423
- 7 - Refer to Toilet Details 350 Series
- 8 - NBS Spec: K10/115
- 9 - NB - Wall to achieve 60min fire integrity

Note:
1. Refer to manufacturer's specifications
2. Refer to Wall Type GA's, Floor Types Plan Details, Ceiling Details & Toilet Details



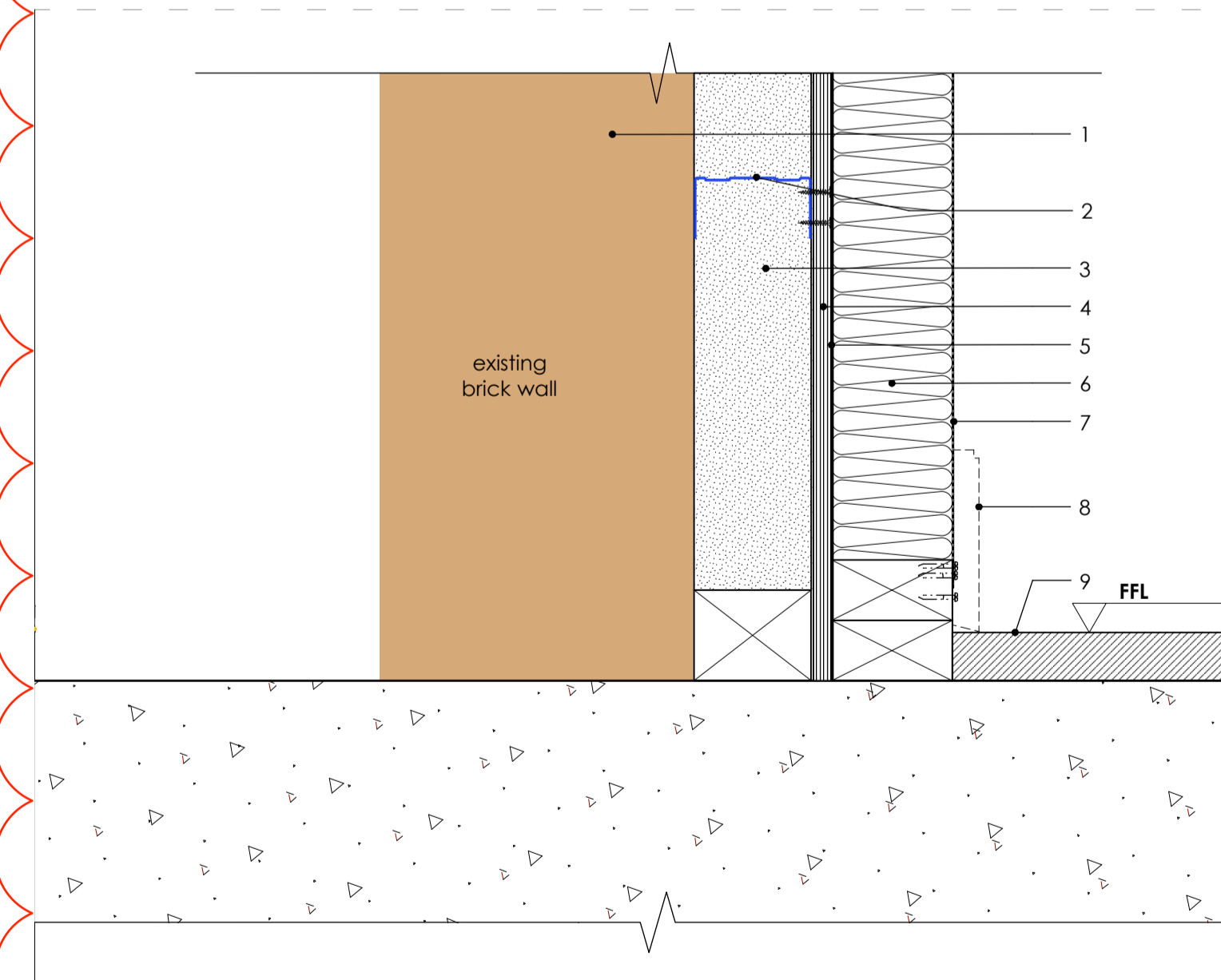
DT05: Stage Wings and Galleries Acoustic Wall
Scale 1:5 Plan

- 1 - Existing Brick Wall
- 2 - Layer of existing Asbestos - build-up varies
- 3 - Plywood Backing or Direct Fix to Wall Lining
- 4 - To encapsulate asbestos all joints, gaps, openings to be taped & not compromised in accordance to asbestos requirements
- 5 - 100mm Medium Density Mineral Fibre (45 kg/m³)
- 6 - H2 T2.5 - Hexagonal perforated tech sheet - mild steel powder coated black colour
- 7 - Studs fixed to existing wall
- 8 - NBS Spec: K10/205
- 9 - NB - Acoustic Detail Advice by Vanguardia



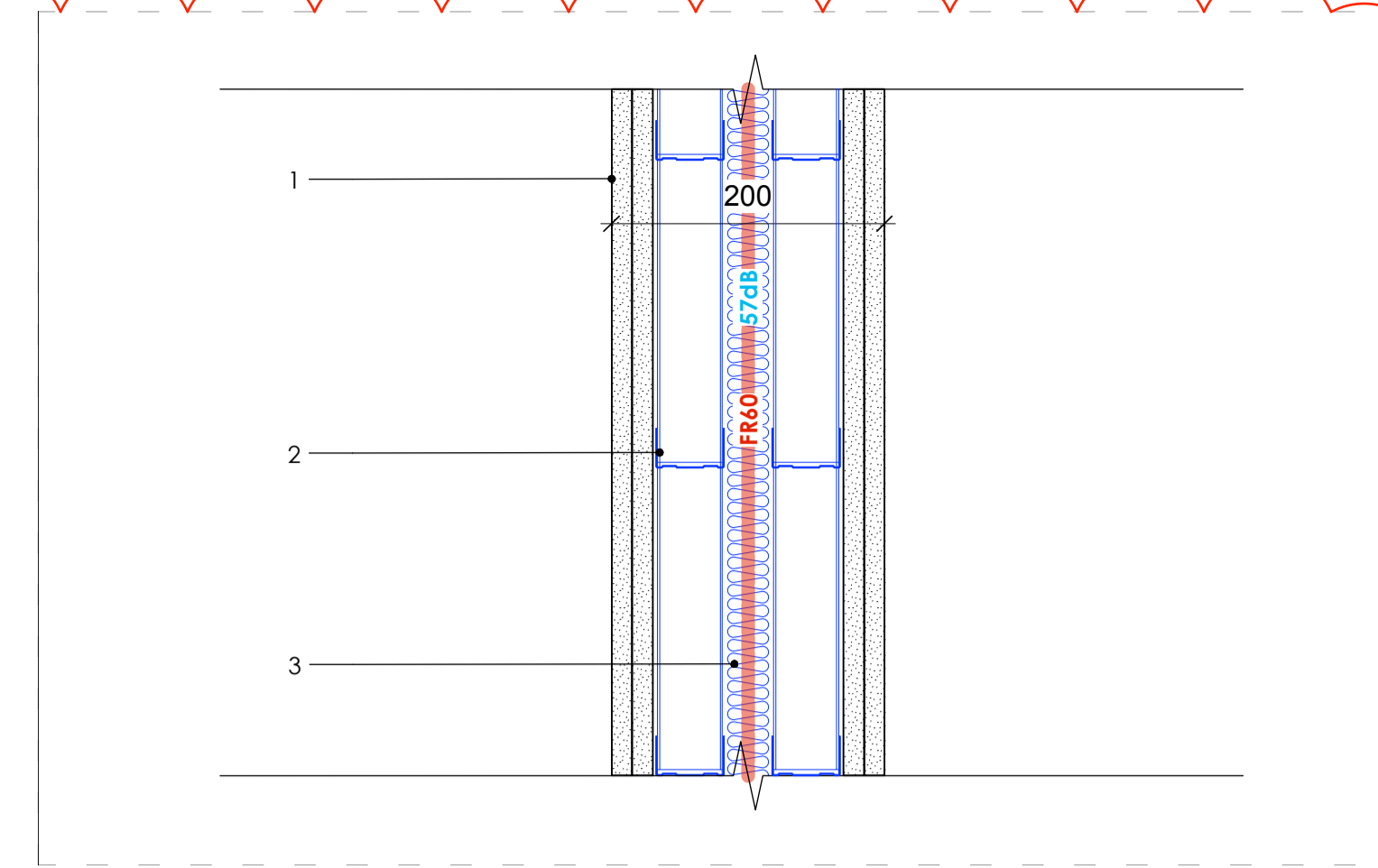
DT05: Stage Wings and Galleries Acoustic Wall
Scale 1:5 Ceiling Section

- 1 - Studs fixed to existing wall
- 2 - Layer of existing Asbestos - build-up varies
- 3 - Existing Brick Wall
- 4 - Plywood Backing or Direct Fix to Wall Lining
- 5 - To encapsulate asbestos all joints, gaps, openings to be taped & not compromised in accordance to asbestos requirements
- 6 - 100mm Medium Density Mineral Fibre (45 kg/m³)
- 7 - H2 T2.5 - Hexagonal perforated tech sheet - mild steel powder coated black colour
- 8 - Refer to generic ceiling details: AHA-KKR-DET-720
- 9 - NBS Spec: K10/205
- 10 - NB - Acoustic Detail Advice by Vanguardia



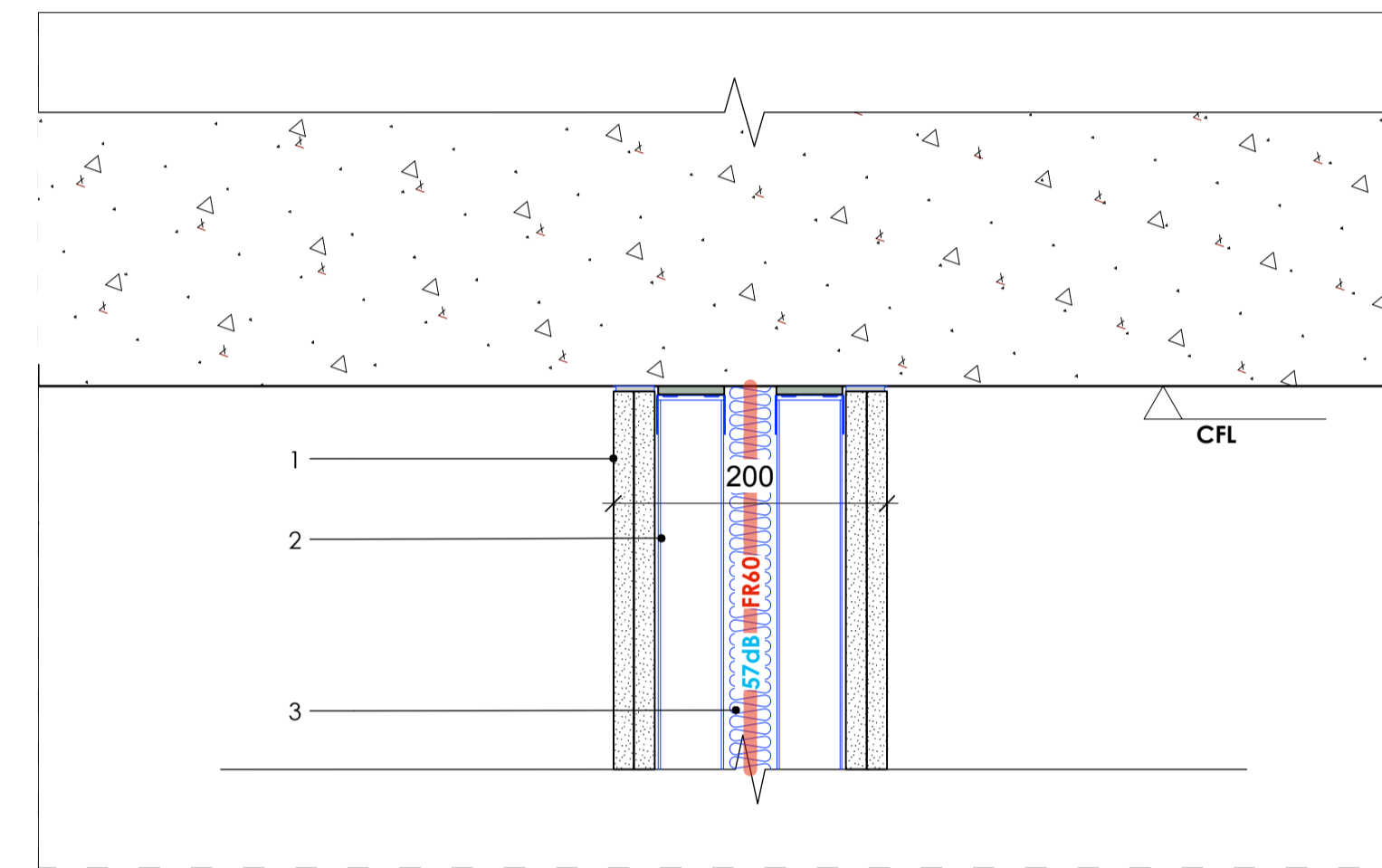
DT05: Stage Wings and Galleries Acoustic Wall
Scale 1:5 Floor Section

- 1 - Existing Brick Wall
- 2 - Studs fixed to existing wall
- 3 - Layer of existing Asbestos - build-up varies
- 4 - Plywood Backing or Direct Fix to Wall Lining
- 5 - To encapsulate asbestos all joints, gaps, openings to be taped & not compromised in accordance to asbestos requirements
- 6 - 100mm Medium Density Mineral Fibre (45 kg/m³)
- 7 - H2 T2.5 - Hexagonal perforated tech sheet - mild steel powder coated black colour
- 8 - Skirting to match original throughout
- 9 - Stage Floor
- 10 - Refer to Typical Floor Type Details: AHA-KKR-DET-419-423
- 11 - NBS Spec: K10/205
- 12 - NB - Acoustic Detail Advice by Vanguardia



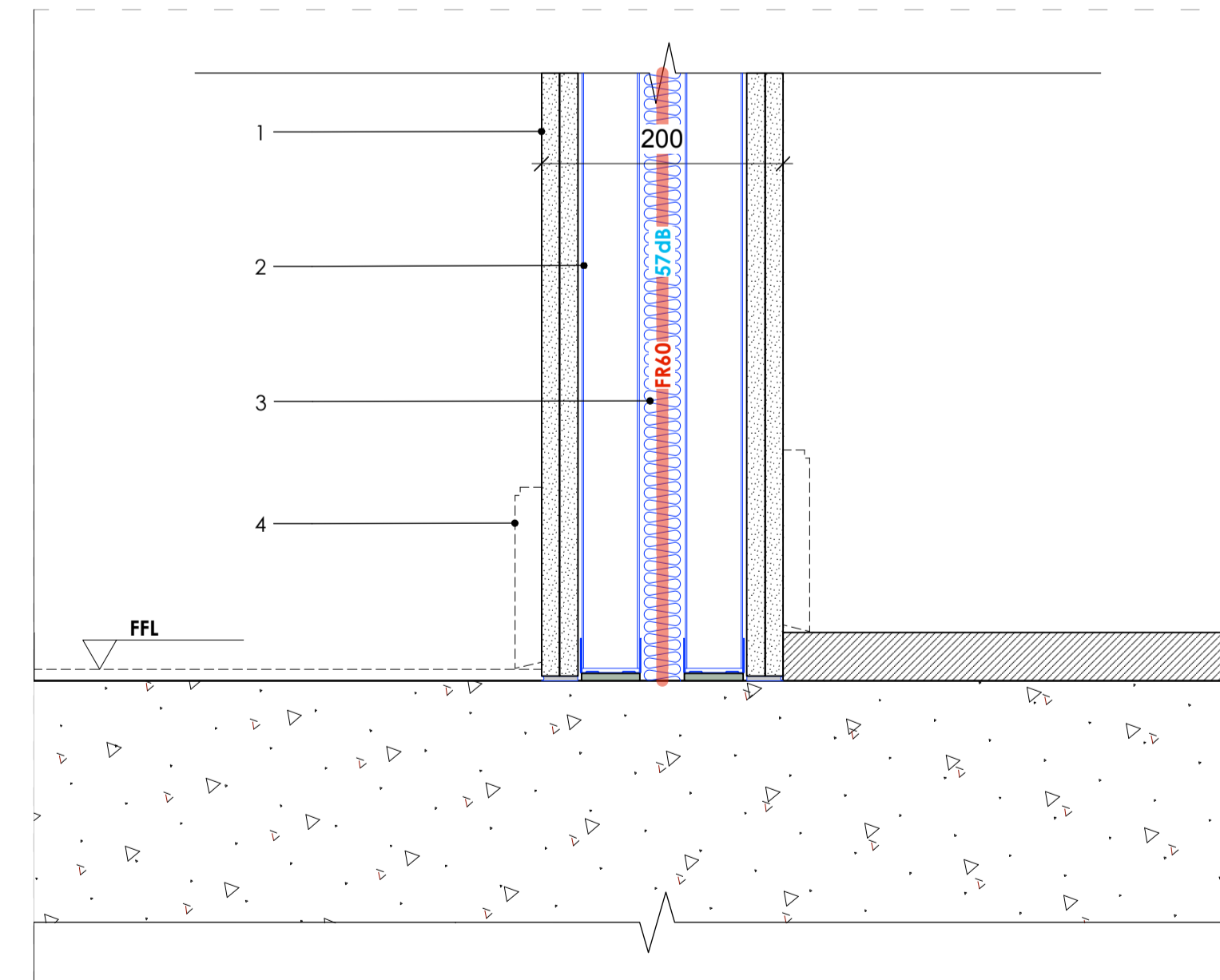
DT06: Acoustic wall build-up partition
Scale 1:5 Plan

- 1 - 2 x 15mm Gyproc SoundBloc taped and skimmed
- 2 - Two Gypframe 48 S 50 °C Stud @1200 ctrs
- 3 - 50mm Isover Acoustic Partition Roll
- 4 - 57dB Acoustic Rating
- 5 - NBS Spec: K10/125
- 6 - NB - Wall to achieve 60min fire integrity & 57dB rating



DT06: Acoustic wall build-up partition
Scale 1:5 Ceiling Section

- 1 - 2 x 15mm Gyproc SoundBloc taped and skimmed
- 2 - Two Gypframe 48 S 50 °C Stud @1200 ctrs
- 3 - 50mm Isover Acoustic Partition Roll
- 4 - 57dB Acoustic Rating
- 5 - Refer to generic ceiling details: AHA-KKR-DET-720
- 6 - NBS Spec: K10/125
- 7 - NB - Wall to achieve 60min fire integrity & 57dB rating



DT06: Acoustic wall build-up partition
Scale 1:5 Floor Section

- 1 - 2 x 15mm Gyproc SoundBloc taped and skimmed
- 2 - Two Gypframe 48 S 50 °C Stud @1200 ctrs
- 3 - 50mm Isover Acoustic Partition Roll
- 4 - Skirting to match original throughout
- 5 - 57dB Acoustic Rating
- 6 - Refer to Typical Floor Type Details: AHA-KKR-DET-419-423
- 7 - NBS Spec: K10/125
- 8 - NB - Wall to achieve 60min fire integrity & 57dB rating

Copyright: All rights reserved. This drawing must not be reproduced without permission.

Only the original drawing should be relied upon. Contractors, subcontractors and suppliers must verify all dimensions on site before commencing any work or making any shop drawings.

All shop drawings to be submitted to the architect for comment prior to fabrication.

This drawing is to be read in conjunction with the Architect's specification, bills of quantities / schedules, structural, mechanical & electrical drawings and all discrepancies are to be reported to the architect.

Do not scale from this drawing. Dimensions are in millimetres unless otherwise stated.

revision / date / amendments

- / 23/12/20 / FIRST ISSUE - STAGE 4
A / 31/01/21 / STAGE 4 - PART 2 - ISSUE & Updated plasterboard type (Rigidur) on DT01, DT02, DT04 & corrected spelling mistakes
B / 01/03/21 / Updates on details, notes & specifications
C / 10/03/21 / Updates on general notes & details DT05 & DT06

NOTE:

-REFER TO NEW WALL TYPE GA'S:
AHA-KKR-GA-609 - 614

-REFER TO WALL FINISHES GA'S:
AHA-KKR-GA-599 - 604

-REFER TO TYPICAL FLOOR TYPE DETAILS:
AHA-KKR-DET-419 - 423

-REFER TO GENERIC CEILING DETAILS:
AHA-KKR-DET-720

-REFER TO TOILET DETAILS:
AHA-KKR-DET-350 - 391

10.03.21

1:5

0 50 100 150 200 250 400mm

STAGE 4

Archer Humphries Architects

Basement
Central House
142 Central Street
London, United Kingdom
EC1V 8AR
T: +44 (0) 20 7251 8555

project title		KOKO + Hope & Anchor + Bayham Place Camden, London	
drawing title	Part 2	scale	date
drawing number	AHA / KKR / DET / 651	1:5 @A1	20.12.20
		drawn / checked	CLW / GA
		revision	C