

Copyright: All rights reserved. This drawing must not be reproduced without permission.

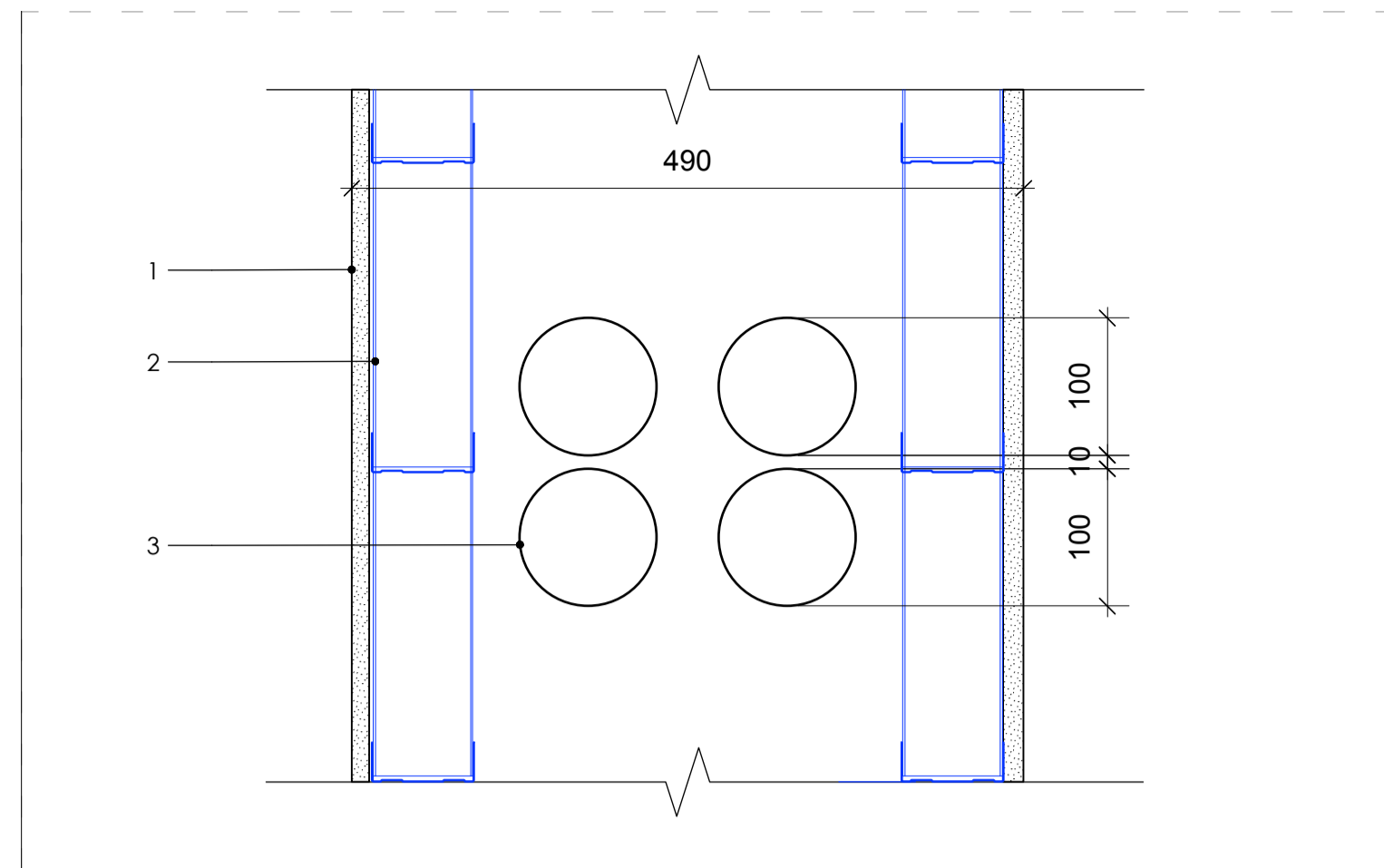
Only the original drawing should be relied upon. Contractors, subcontractors and suppliers must verify all dimensions on site before commencing any work or making any shop drawings.

All shop drawings to be submitted to the architect for comment prior to fabrication.

This drawing is to be read in conjunction with the Architect's specification, bills of quantities / schedules, structural, mechanical & electrical drawings and all discrepancies are to be reported to the architect.

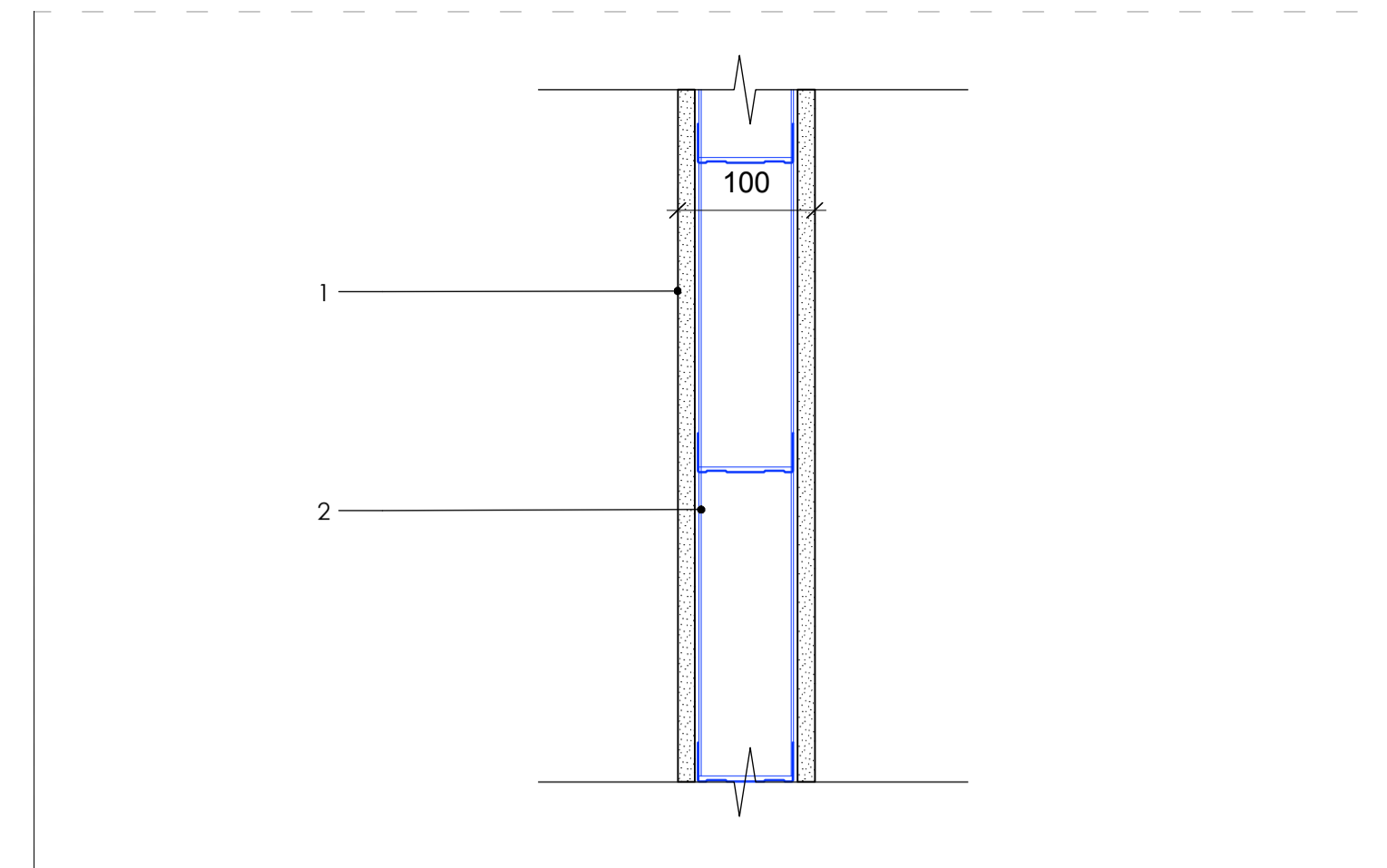
Do not scale from this drawing. Dimensions are in millimetres unless otherwise stated.

revision / date / amendments
- / 23/12/20 / FIRST ISSUE - STAGE 4
A / 31/01/21 / STAGE 4 - PART 2 - ISSUE & Updated plasterboard type (Rigidur) on DT01, DT02, DT04 & corrected spelling mistakes
B / 01/03/21 / Updates on details, notes & specifications
C / 10/03/21 / Updates on general notes



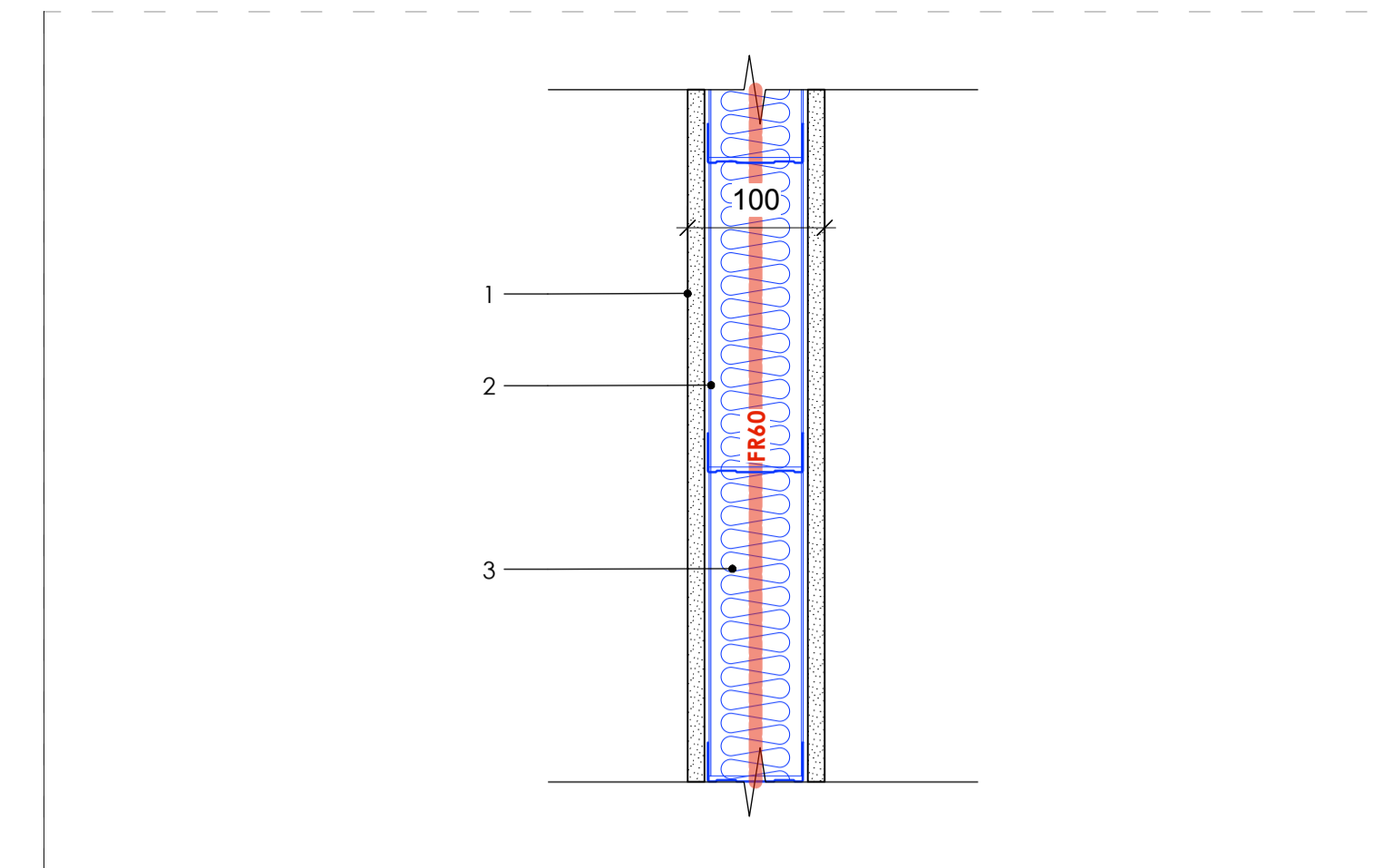
**DT01: Internal wall build-up containing beer python pipes**  
Scale 1:5 Plan

- 1 - 12.5mm Rigidur taped and skimmed
- 2 - 70mm Gyproframe S 50 Stud @600 ctrs
- 3 - 100mm Diameter Beer Python Pipes
- 4 - NBS Spec: K10/115



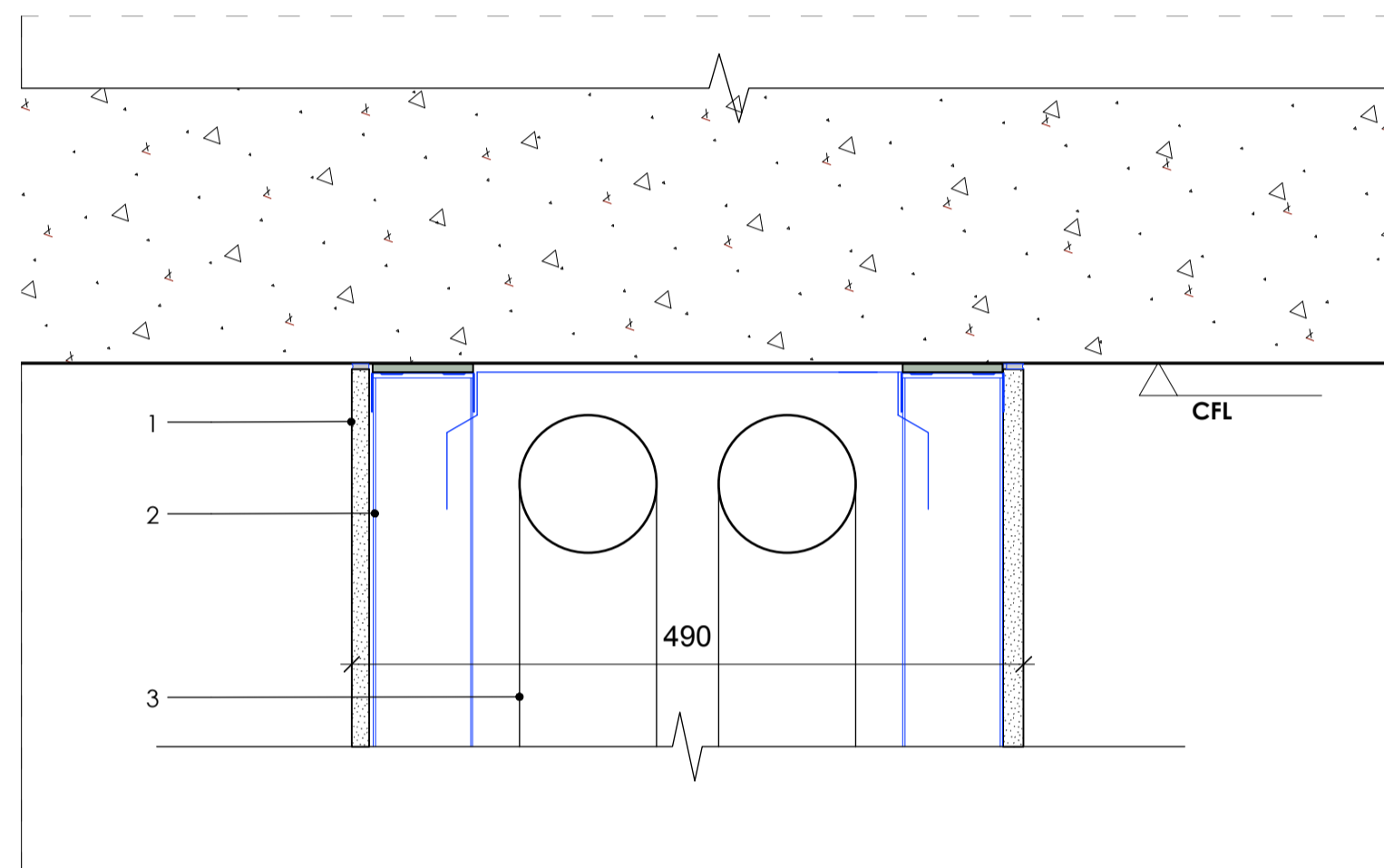
**DT02: Internal wall build-up between various locations as listed above**  
Scale 1:5 Plan

- 1 - 12.5mm Rigidur taped and skimmed
- 2 - 70mm Gyproframe S 50 Stud @600 ctrs
- 3 - NBS Spec: K10/115



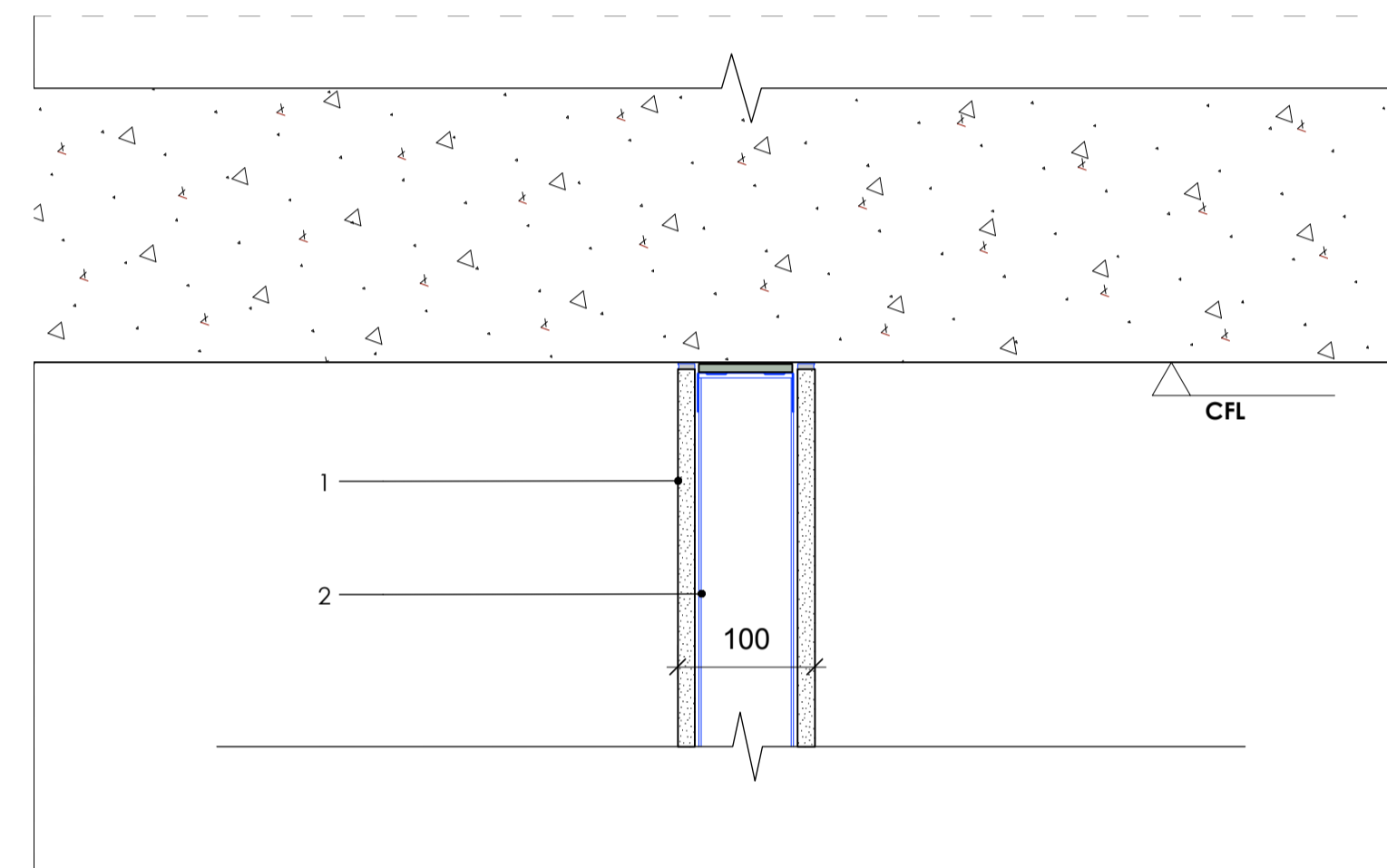
**DT03: Internal wall build-up riser partition**  
Scale 1:5 Plan

- 1 - 12.5mm Rigidur taped and skimmed
- 2 - 70mm Gyproframe S 50 Stud @600 ctrs
- 3 - Insulation
- 4 - NBS Spec: K10/115
- NB - Wall to achieve 60min fire integrity



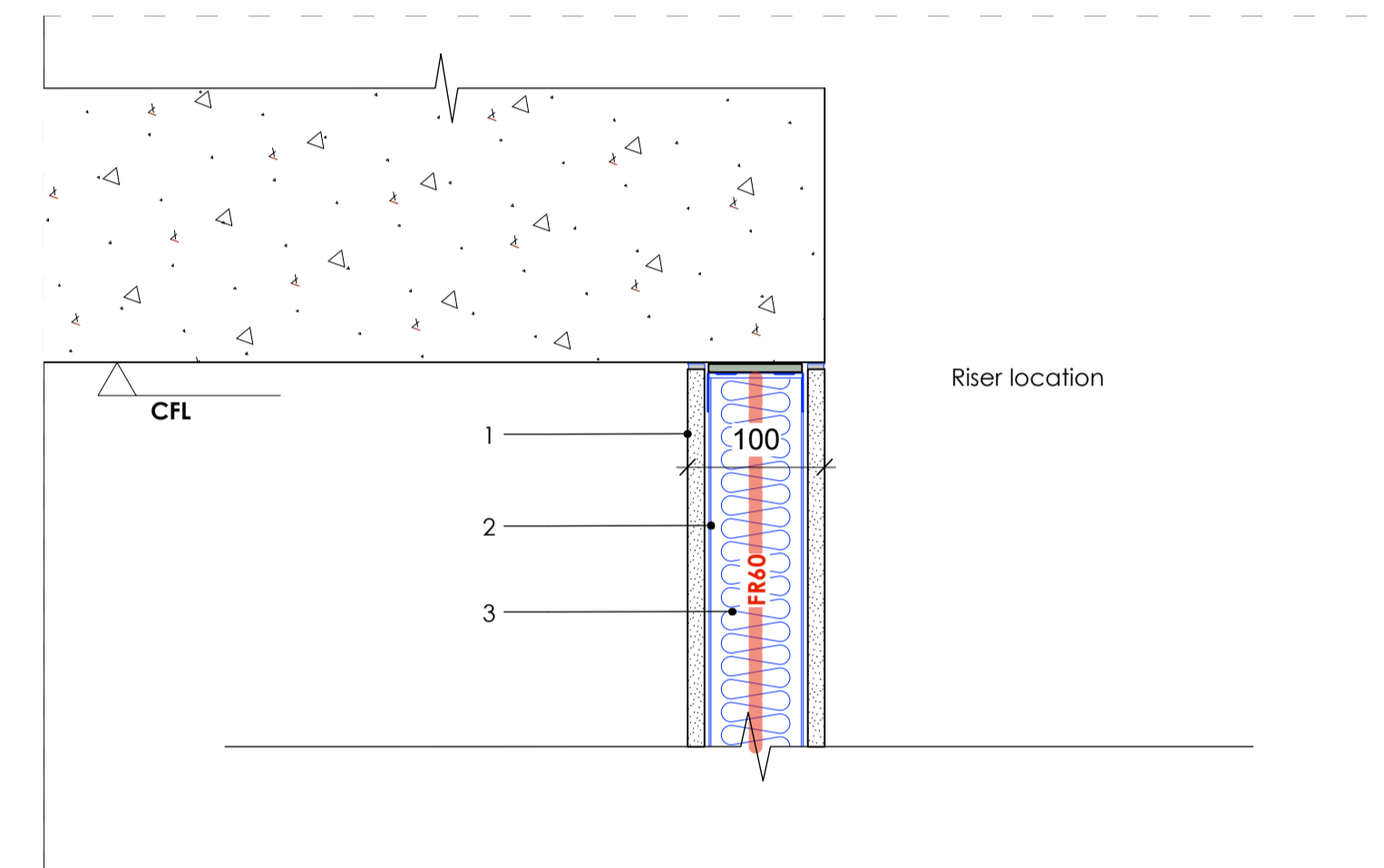
**DT01: Internal wall build-up containing beer python pipes**  
Scale 1:5 Ceiling Section

- 1 - 12.5mm Rigidur taped and skimmed
- 2 - 70mm Gyproframe S 50 Stud @600 ctrs
- 3 - 100mm Diameter Beer Python Pipes
- 4 - Refer to generic ceiling details: AHA-KKR-DET-720
- 5 - NBS Spec: K10/115



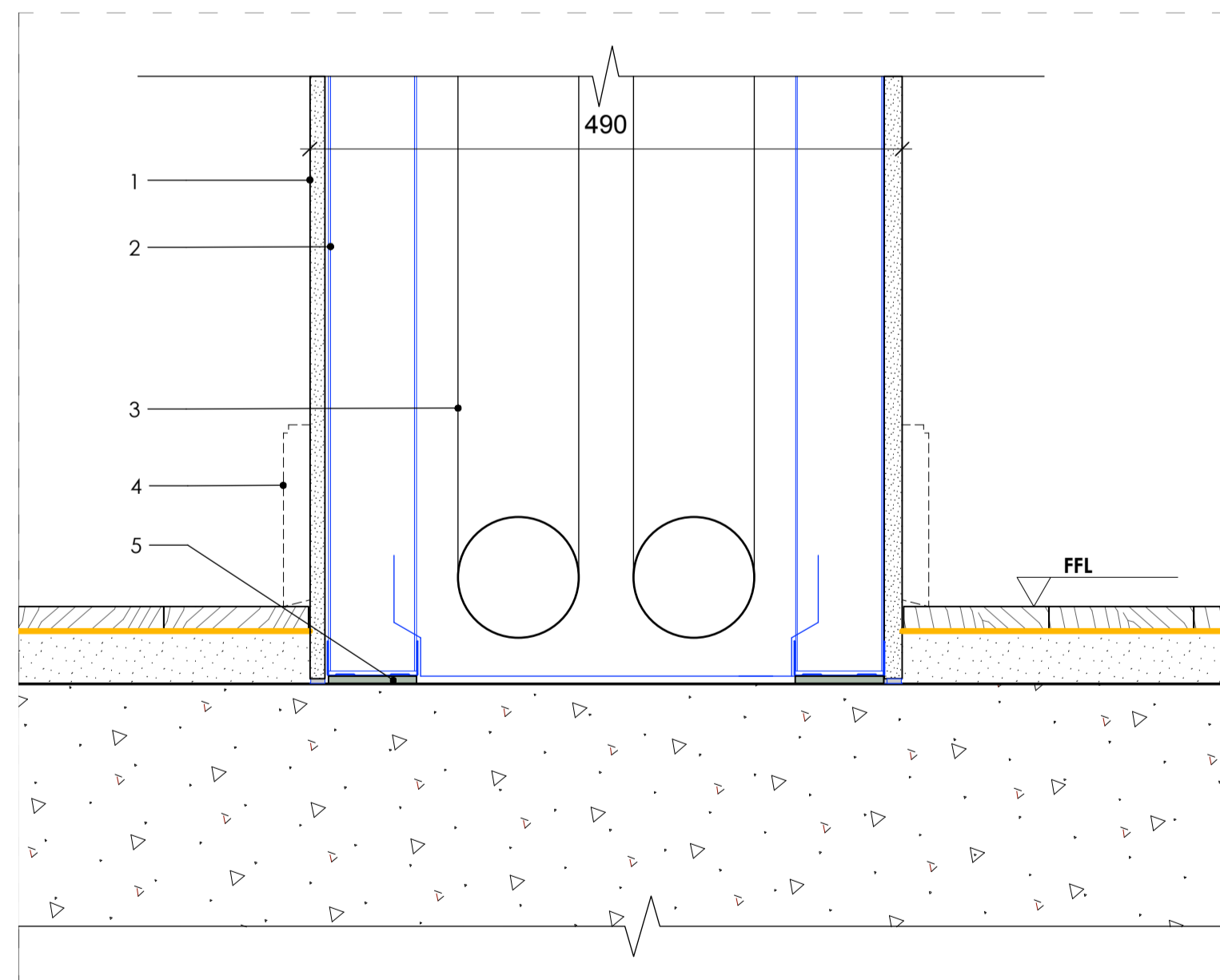
**DT02: Internal wall build-up between various locations as listed above**  
Scale 1:5 Ceiling Section

- 1 - 12.5mm Rigidur taped and skimmed
- 2 - 70mm Gyproframe S 50 Stud @600 ctrs
- 3 - Refer to generic ceiling details: AHA-KKR-DET-720
- 4 - NBS Spec: K10/115



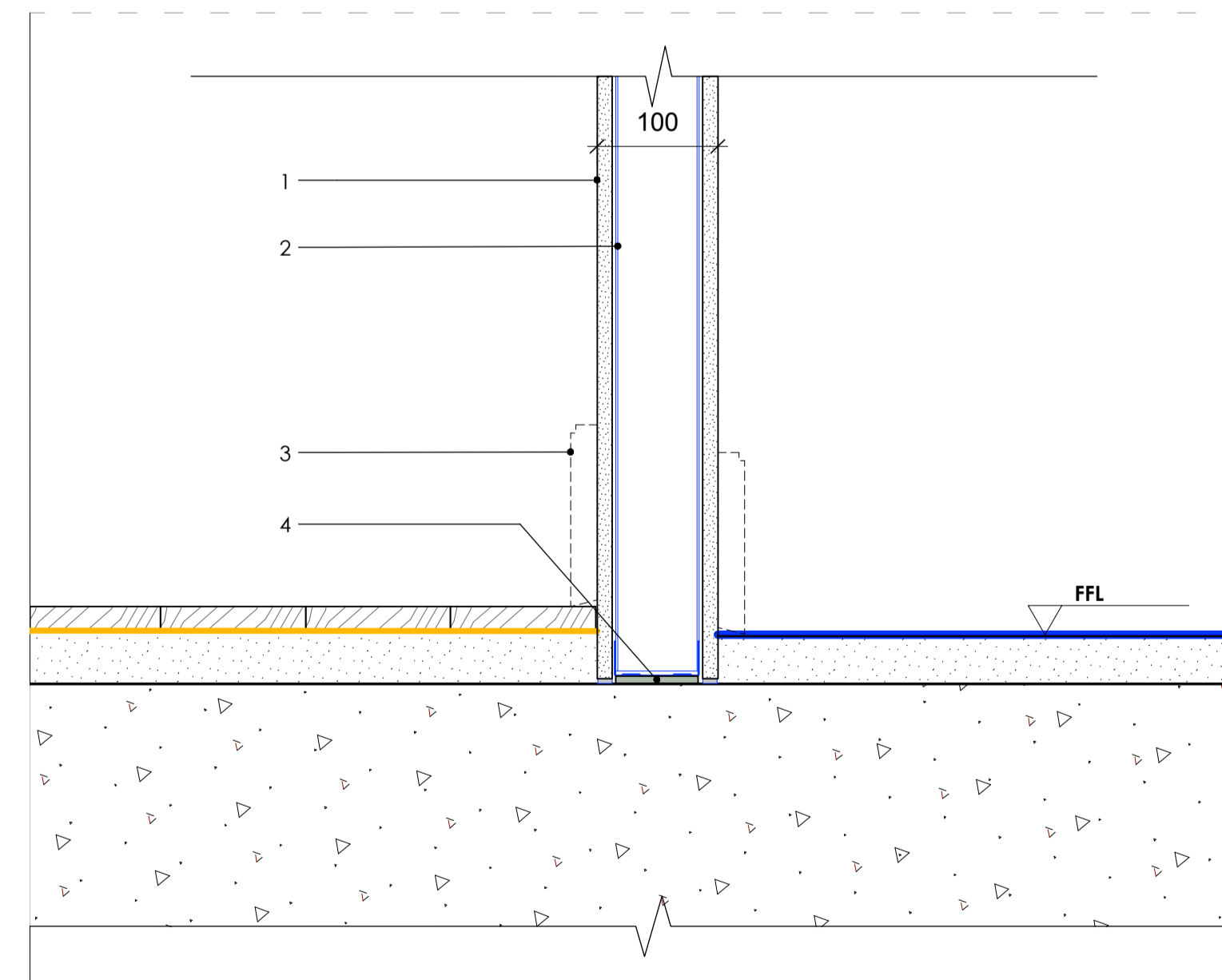
**DT03: Internal wall build-up riser partition**  
Scale 1:5 Ceiling Section

- 1 - 12.5mm Rigidur taped and skimmed
- 2 - 70mm Gyproframe S 50 Stud @600 ctrs
- 3 - Insulation
- 4 - Refer to generic ceiling details: AHA-KKR-DET-720
- 5 - NBS Spec: K10/115
- NB - Wall to achieve 60min fire integrity



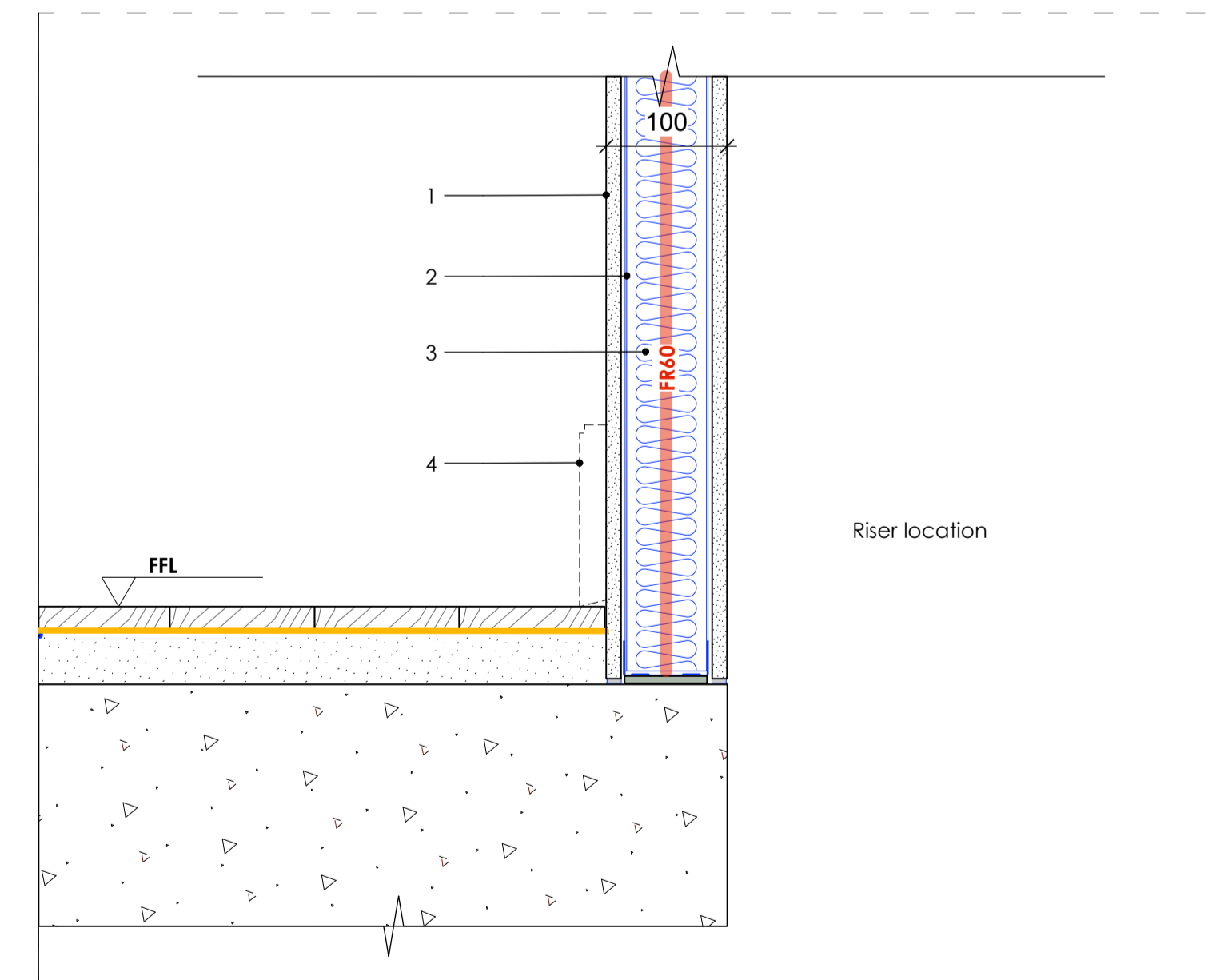
**DT01: Internal wall build-up containing beer python pipes**  
Scale 1:5 Floor Section

- 1 - 12.5mm Rigidur taped and skimmed
- 2 - 70mm Gyproframe S 50 Stud @600 ctrs
- 3 - 100mm Diameter Beer Python Pipes
- 4 - Skirting to match original throughout
- 5 - Gyproc sealant and bulkfill
- 6 - Refer to Typical Floor Type Details: AHA-KKR-DET-419-423
- 7 - NBS Spec: K10/115



**DT02: Internal wall build-up between various locations as listed above**  
Scale 1:5 Floor Section

- 1 - 12.5mm Rigidur taped and skimmed
- 2 - 70mm Gyproframe S 50 Stud @600 ctrs
- 3 - Skirting to match original throughout
- 4 - Gyproc sealant and bulkfill
- 5 - Refer to Typical Floor Type Details: AHA-KKR-DET-419-423
- 6 - NBS Spec: K10/115



**DT03: Internal wall build-up riser partition**  
Scale 1:5 Floor Section

- 1 - 12.5mm Rigidur taped and skimmed
- 2 - 70mm Gyproframe S 50 Stud @600 ctrs
- 3 - Insulation
- 4 - Skirting to match original throughout
- 5 - Refer to Typical Floor Type Details: AHA-KKR-DET-419-423
- 6 - NBS Spec: K10/115
- NB - Wall to achieve 60min fire integrity

**NOTE:**

-REFER TO NEW WALL TYPE GA'S:  
AHA-KKR-GA-609 - 614

-REFER TO WALL FINISHES GA'S:  
AHA-KKR-GA-599 - 604

-REFER TO TYPICAL FLOOR TYPE DETAILS:  
AHA-KKR-DET-419 - 423

-REFER TO GENERIC CEILING DETAILS:  
AHA-KKR-DET-720

-REFER TO TOILET DETAILS:  
AHA-KKR-DET-350 - 391

10.03.21

1:5



**STAGE 4**

Archer Humphries Architects

Basement  
Central House  
142 Central Street  
London, United Kingdom  
EC1V 8AR  
T: +44 (0) 20 7251 8555

project title		KOKO + Hope & Anchor + Bayham Place Camden, London	
drawing title	scale	date	
Typical New Wall Types Part 1	1:5 @A1	20.12.20	
drawing number	revision	checked	DA
AHA/ KKR /DET/650	C		

**Note:**  
1. Refer to manufacturer's specifications  
2. Refer to Wall Type GA's, Floor Types Plan Details, Ceiling Details & Toilet Details