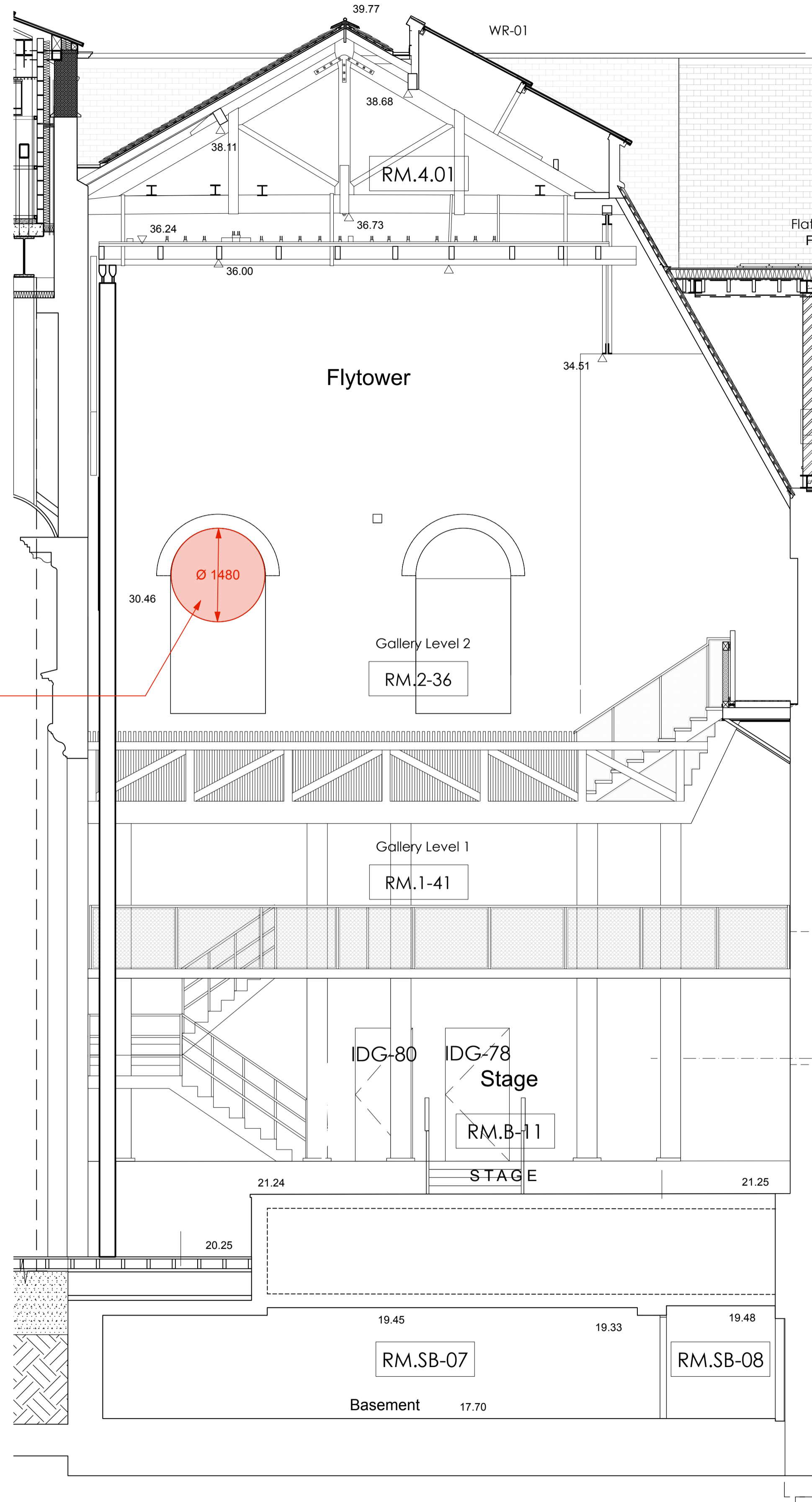


1 Proposed 4th Floor Plan
Scale: 1:500



2 Proposed Flytower Sectional Detail
Scale: 1:50

Circular penetration through blocked up brick arch for mechanical ducting service the stage and auditorium

Copyright: All rights reserved. This drawing must not be reproduced without permission.
 Only the original drawing should be relied upon. Contractors, subcontractors and suppliers must verify all dimensions on site before commencing any work or making any shop drawings.
 All shop drawings to be submitted to the architect for comment prior to fabrication.
 This drawing is to be read in conjunction with the Architect's specification, bills of quantities / schedules, structural, mechanical & electrical drawings and all discrepancies are to be reported to the architect.
 Do not scale from this drawing. Dimensions are in millimetres unless otherwise stated.

revision / date / amendments

03.07.20

FOR INFORMATION

Archer Humphryes Architects

Basement
 Central House
 142 Central Street
 London, United Kingdom
 EC1V 8AR
 T: +44 (0) 20 7251 8555

project title		KOKO + Hope & Anchor + Bayham Place Camden, London	
drawing title	scale	date	
Proposed Flytower Sectional Demolition Detail	1:50 @A1	11.08.17	
drawing number	drawn	checked	
AHA/KKC/DET/615-1	FR	DA	
	revision		
	-		