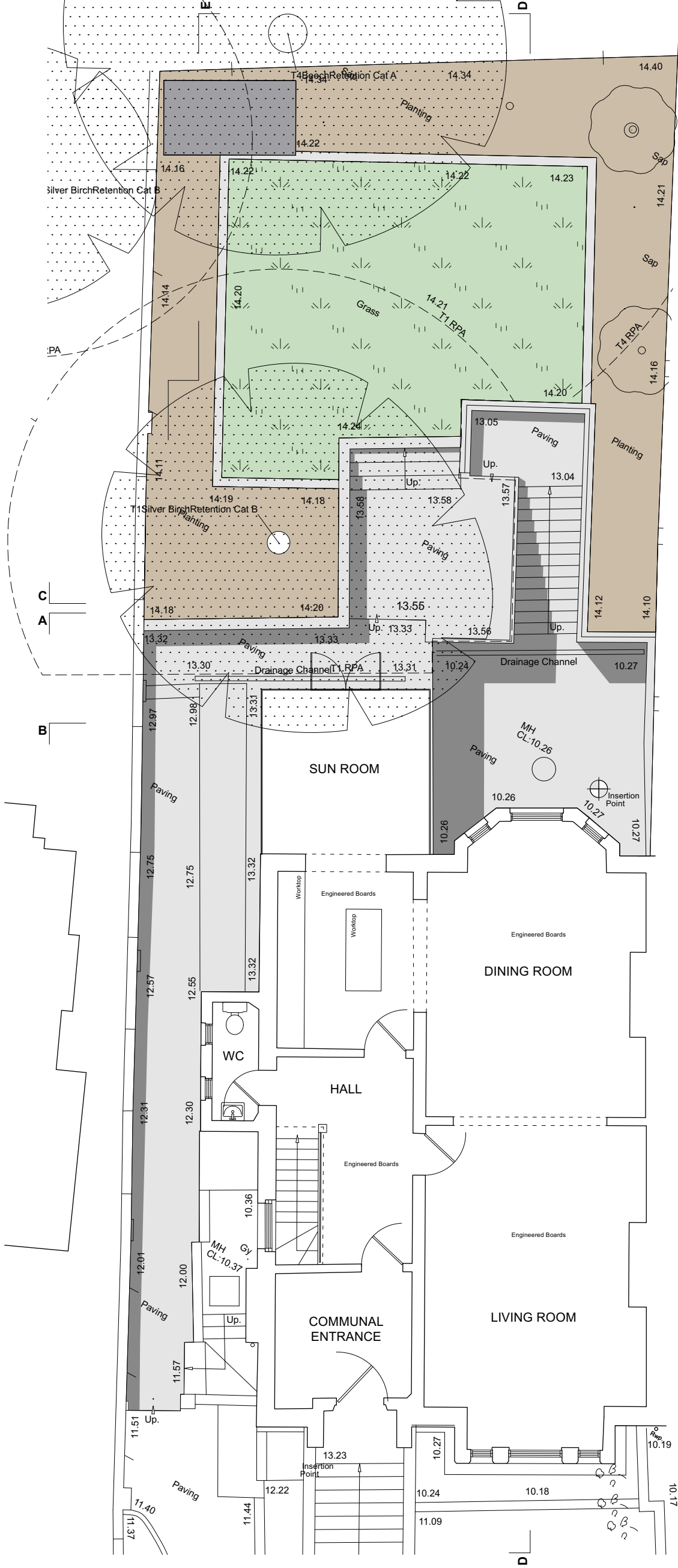


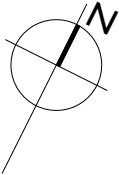
FOR PLANNING

Revision	Date	By	Amendments	Project			
A	12/02/2021	GD	BASEMENT TO 1LR ADDED	LYNDHURST ROAD	<div>23</div>	23 Architecture Ltd 318 Kensal Road London W10 5BZ T 020 8962 8666 F 020 8962 8777 info@23arc.com www.23arc.com	
B	28/06/2021	GD	REVISED TO ILLUSTRATE GARDEN STUDIO AND LANDSCAPING				
C	17/08/2021	GD	REVISIONS POST-PRE APP				
D	01/10/2021	GD	Submitted for planning				
Do not scale, use figured dimensions only.							
All dimensions to be verified on site prior to the commencement of any work or the production of any shop drawing.							
This drawing to be read in conjunction with all related Architect's and Engineer's drawings and any other relevant information.							
No liability will be accepted for any errors or omissions in the content of this drawing, which arise as a result of faulty transmission or reproduction when issued in an electronic format. No alterations or amendments are permitted to this drawing other than by 23 Architecture LTD.							
Drawing title					Date	Drawn by	Drawing number
EXISTING LOWER GROUND					JANUARY 2021	GD	ARC586-EX101
					Scale	Checked by	Revision
					1:1250@ISO A3		D

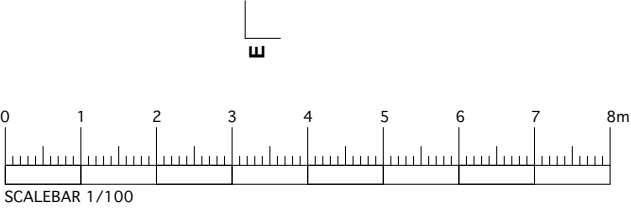
SCALEBAR 1/100




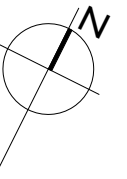
<div></div>	PLANTED BEDS
<div></div>	57 sqm
<div></div>	LAWN
<div></div>	48 sqm
TOTAL PERMEABLE	
105sqm	
<div></div>	HARD STANDING
<div></div>	96.5 sqm
<div></div>	ROOF COVERING
<div></div>	5 sqm
TOTAL IMPERMEABLE	
96.5 sqm	



FOR PLANNING



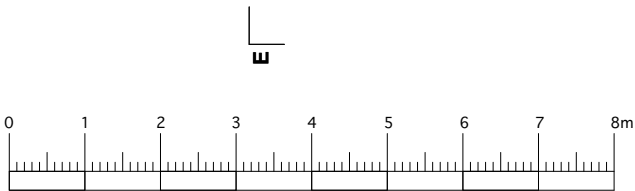
Revision	Date	By	Amendments	Project				
A	12/02/2021	GD	BASEMENT TO ILR ADDED	LYNDHURST ROAD		23 Architecture Ltd 318 Kensal Road London W10 5BZ T 020 8962 8666 F 020 8962 8777 info@23arc.com www.23arc.com		
B	28/06/2021	GD	REVISED TO ILLUSTRATE GARDEN STUDIO AND LANDSCAPING					
C	17/08/2021	GD	REVISIONS POST-PRE APP					
D	01/10/2021	GD	Submitted for planning					
Do not scale, use figured dimensions only. All dimensions to be verified on site prior to the commencement of any work or the production of any shop drawing. This drawing to be read in conjunction with all related Architect's and Engineer's drawings and any other relevant information. No liability will be accepted for any errors or omissions in the content of this drawing, which arise as a result of faulty transmission or reproduction when issued in an electronic format. No alterations or amendments are permitted to this drawing other than by 23 Architecture LTD.					Drawing title	Date	Drawn by	Drawing number
					EXISTING RAISED GROUND	JANUARY 2021	GD	ARC586-EX102
						Scale	Checked by	Revision
						1:1250@ISO A3		D



23

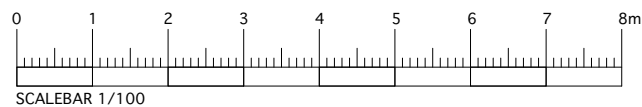
23 Architecture Ltd
318 Kensal Road London W10 5BZ
T 020 8962 8666 F 020 8962 8777
info@23arc.com www.23arc.com


<table><tr><th>Revision</th><th>Date</th><th>By</th><th>Amendments</th></tr><tr><td>A</td><td>12/02/2021</td><td>GD</td><td>BASEMENT TO 1LR ADDED</td></tr><tr><td>B</td><td>28/06/2021</td><td>GD</td><td>REVISED TO ILLUSTRATE GARDEN STUDIO AND LANDSCAPING</td></tr><tr><td>C</td><td>17/08/2021</td><td>GD</td><td>REVISIONS POST-PRE APP</td></tr><tr><td>D</td><td>01/10/2021</td><td>GD</td><td>Submitted for planning</td></tr></table>	Revision	Date	By	Amendments	A	12/02/2021	GD	BASEMENT TO 1LR ADDED	B	28/06/2021	GD	REVISED TO ILLUSTRATE GARDEN STUDIO AND LANDSCAPING	C	17/08/2021	GD	REVISIONS POST-PRE APP	D	01/10/2021	GD	Submitted for planning	<table><tr><th>Project</th></tr><tr><td>LYNDHURST ROAD</td></tr></table>	Project	LYNDHURST ROAD	<div><div>23</div><div>23 Architecture Ltd 318 Kensal Road London W10 5BZ T 020 8962 8666 F 020 8962 8777 info@23arc.com www.23arc.com</div></div>		
Revision	Date	By	Amendments																							
A	12/02/2021	GD	BASEMENT TO 1LR ADDED																							
B	28/06/2021	GD	REVISED TO ILLUSTRATE GARDEN STUDIO AND LANDSCAPING																							
C	17/08/2021	GD	REVISIONS POST-PRE APP																							
D	01/10/2021	GD	Submitted for planning																							
Project																										
LYNDHURST ROAD																										
<p>Do not scale, use figured dimensions only.</p> <p>All dimensions to be verified on site prior to the commencement of any work or the production of any shop drawing.</p> <p>This drawing to be read in conjunction with all related Architect's and Engineer's drawings and any other relevant information.</p> <p>No liability will be accepted for any errors or omissions in the content of this drawing, which arise as a result of faulty transmission or reproduction when issued in an electronic format. No alterations or amendments are permitted to this drawing other than by 23 Architecture LTD.</p>	<table><tr><th>Drawing title</th></tr><tr><td>EXISTING FIRST FLOOR</td></tr></table>	Drawing title	EXISTING FIRST FLOOR	<table><tr><th>Date</th></tr><tr><td>JANUARY 2021</td></tr><tr><th>Scale</th></tr><tr><td>1:1250@ISO A3</td></tr></table>	Date	JANUARY 2021	Scale	1:1250@ISO A3	<table><tr><th>Drawn by</th></tr><tr><td>GD</td></tr><tr><th>Checked by</th></tr><tr><td>D</td></tr></table>	Drawn by	GD	Checked by	D	<table><tr><th>Drawing number</th></tr><tr><td>ARC586-EX103</td></tr><tr><th>Revision</th></tr><tr><td></td></tr></table>	Drawing number	ARC586-EX103	Revision									
Drawing title																										
EXISTING FIRST FLOOR																										
Date																										
JANUARY 2021																										
Scale																										
1:1250@ISO A3																										
Drawn by																										
GD																										
Checked by																										
D																										
Drawing number																										
ARC586-EX103																										
Revision																										





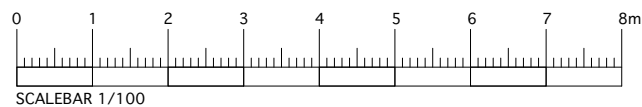
FOR PLANNING



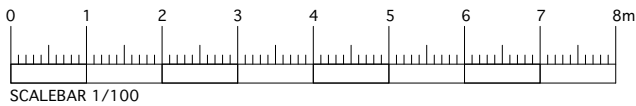
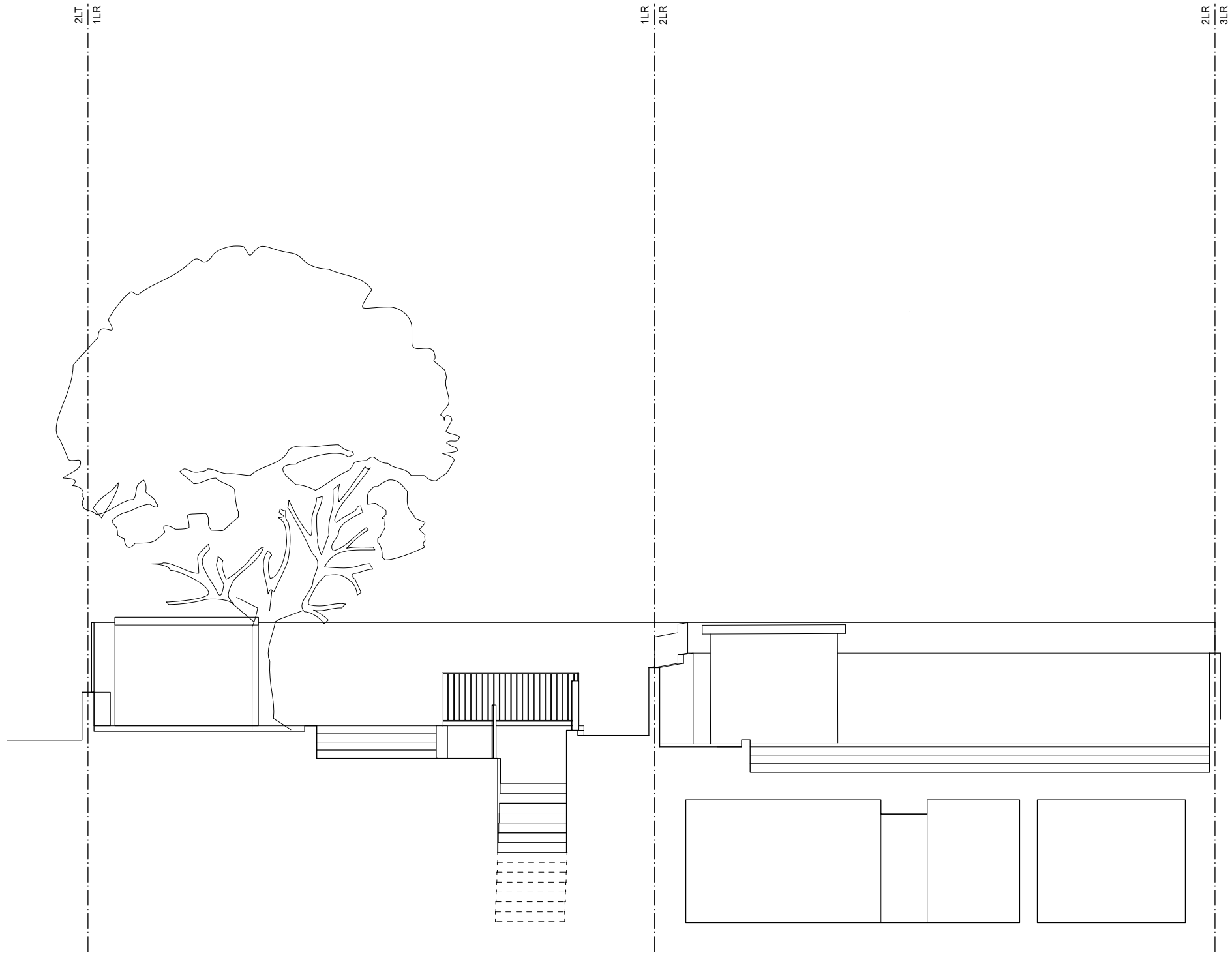
Revision	Date	By	Amendments	Project				
A	12/02/2021	GD	BASEMENT TO 1LR ADDED	LYNDHURST ROAD		23 Architecture Ltd 318 Kensal Road London W10 5BZ T 020 8962 8666 F 020 8962 8777 info@23arc.com www.23arc.com		
B	28/06/2021	GD	REVISED TO ILLUSTRATE GARDEN STUDIO AND LANDSCAPING					
C	17/08/2021	GD	REVISIONS POST-PRE APP					
D	01/10/2021	GD	Submitted for planning					
Do not scale, use figured dimensions only. All dimensions to be verified on site prior to the commencement of any work or the production of any shop drawing. This drawing to be read in conjunction with all related Architect's and Engineer's drawings and any other relevant information. No liability will be accepted for any errors or omissions in the content of this drawing, which arise as a result of faulty transmission or reproduction when issued in an electronic format. No alterations or amendments are permitted to this drawing other than by 23 Architecture LTD.					Drawing title			
EXISTING SECTION AA					Date	Drawn by	Drawing number	
					JANUARY 2021	GD	ARC586-EX107	
					Scale	Checked by	Revision	
					1:1250@ISO A3		D	



FOR PLANNING



Revision				Project		<div><div>23</div><div>23 Architecture Ltd 318 Kensal Road London W10 5BZ T 020 8962 8666 F 020 8962 8777 info@23arc.com www.23arc.com</div></div>				
A	12/02/2021	GD	BASEMENT TO 1LR ADDED		LYNDHURST ROAD					
B	28/06/2021	GD	REVISED TO ILLUSTRATE GARDEN STUDIO AND LANDSCAPING							
C	17/08/2021	GD	REVISIONS POST-PRE APP							
D	01/10/2021	GD	Submitted for planning							
<div><div>Do not scale, use figured dimensions only.</div><div>All dimensions to be verified on site prior to the commencement of any work or the production of any shop drawing.</div><div>This drawing to be read in conjunction with all related Architect's and Engineer's drawings and any other relevant information.</div><div>No liability will be accepted for any errors or omissions in the content of this drawing, which arise as a result of faulty transmission or reproduction when issued in an electronic format. No alterations or amendments are permitted to this drawing other than by 23 Architecture LTD.</div></div>						Drawing title		Date	Drawn by	Drawing number
EXISTING SECTION BB						JANUARY 2021		GD	ARC586-EX108	
						Scale		Checked by	Revision	
						1:1250@ISO A3			D	



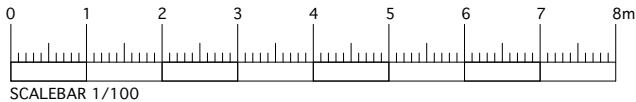
FOR PLANNING


Revision				Date	By	Amendments	Project		<div><div>23</div><div>23 Architecture Ltd 318 Kensal Road London W10 5BZ T 020 8962 8666 F 020 8962 8777 info@23arc.com www.23arc.com</div></div>				
A			12/02/2021	GD	BASEMENT TO 1LR ADDED		LYNDHURST ROAD						
B			28/06/2021	GD	REVISED TO ILLUSTRATE GARDEN STUDIO AND LANDSCAPING								
C			17/08/2021	GD	REVISIONS POST-PRE APP								
D			01/10/2021	GD	Submitted for planning								
Do not scale, use figured dimensions only.								Drawing title		Date	Drawn by	Drawing number	
All dimensions to be verified on site prior to the commencement of any work or the production of any shop drawing. This drawing to be read in conjunction with all related Architect's and Engineer's drawings and any other relevant information. No liability will be accepted for any errors or omissions in the content of this drawing, which arise as a result of faulty transmission or reproduction when issued in an electronic format. No alterations or amendments are permitted to this drawing other than by 23 Architecture LTD.								EXISTING SECTION CC		JANUARY 2021	GD	ARC586-EX109	
										Scale		Checked by	Revision
										1:1250@ISO A3			D



1LR

FOR PLANNING



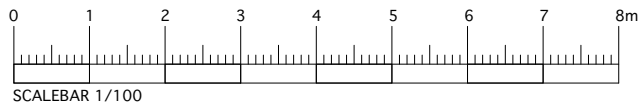
Revision	Date	By	Amendments	Project					
A	12/02/2021	GD	BASEMENT TO 1LR ADDED	LYNDHURST ROAD		23 Architecture Ltd 318 Kensal Road London W10 5BZ T 020 8962 8666 F 020 8962 8777 info@23arc.com www.23arc.com			
B	28/06/2021	GD	REVISED TO ILLUSTRATE GARDEN STUDIO AND LANDSCAPING						
C	17/08/2021	GD	REVISIONS POST-PRE APP						
D	01/10/2021	GD	Submitted for planning						
Do not scale, use figured dimensions only. All dimensions to be verified on site prior to the commencement of any work or the production of any shop drawing. This drawing to be read in conjunction with all related Architect's and Engineer's drawings and any other relevant information. No liability will be accepted for any errors or omissions in the content of this drawing, which arise as a result of faulty transmission or reproduction when issued in an electronic format. No alterations or amendments are permitted to this drawing other than by 23 Architecture LTD.					Drawing title		Date	Drawn by	Drawing number
					EXISTING SECTION DD		JANUARY 2021	GD	ARC586-EX110
							Scale		Checked by
							1:1250@ISO A3		D



FOR PLANNING




Revision	Date	By	Amendments	Project	<div>23</div> <div>23 Architecture Ltd 318 Kensal Road London W10 5BZ T 020 8962 8666 F 020 8962 8777 info@23arc.com www.23arc.com</div>			
A	12/02/2021	GD	BASEMENT TO 1LR ADDED	LYNDHURST ROAD				
B	28/06/2021	GD	REVISED TO ILLUSTRATE GARDEN STUDIO AND LANDSCAPING					
C	17/08/2021	GD	REVISIONS POST-PRE APP					
D	01/10/2021	GD	Submitted for planning					
<div>Do not scale, use figured dimensions only.</div> <div>All dimensions to be verified on site prior to the commencement of any work or the production of any shop drawing.</div> <div>This drawing to be read in conjunction with all related Architect's and Engineer's drawings and any other relevant information.</div> <div>No liability will be accepted for any errors or omissions in the content of this drawing, which arise as a result of faulty transmission or reproduction when issued in an electronic format. No alterations or amendments are permitted to this drawing other than by 23 Architecture LTD.</div>					Drawing title	Date	Drawn by	Drawing number
EXISTING SECTION EE					JANUARY 2021	GD	ARC586-EX111	
					Scale	Checked by	Revision	
					1:1250@ISO A3		D	



SCALEBAR 1/100

FOR PLANNING

Revision	Date	By	Amendments	Project				
A	12/02/2021	GD	BASEMENT TO 1LR ADDED	LYNDHURST ROAD		23 Architecture Ltd 318 Kensal Road London W10 5BZ T 020 8962 8666 F 020 8962 8777 info@23arc.com www.23arc.com		
B	28/06/2021	GD	REVISED TO ILLUSTRATE GARDEN STUDIO AND LANDSCAPING					
C	17/08/2021	GD	REVISIONS POST-PRE APP					
D	01/10/2021	GD	Submitted for planning					
Do not scale, use figured dimensions only.					Drawing title			
All dimensions to be verified on site prior to the commencement of any work or the production of any shop drawing.					EXISTING FRONT ELEVATION			
This drawing to be read in conjunction with all related Architect's and Engineer's drawings and any other relevant information.					JANUARY 2021			
No liability will be accepted for any errors or omissions in the content of this drawing, which arise as a result of faulty transmission or reproduction when issued in an electronic format. No alterations or amendments are permitted to this drawing other than by 23 Architecture LTD.					Scale			
					1:1250@ISO A3			
					Drawn by		Drawing number	
					GD		ARC586-EX114	
					Checked by		Revision	
							D	