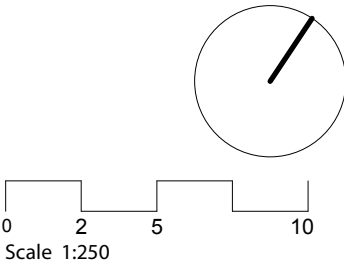


GENERAL NOTES:  
This drawing is copyright of KSR architects.  
This drawing must be read in conjunction with the Designer's Risk Assessment, specification and all other relevant documentation and drawings.  
KSR architects accept no liability for any expense, loss or damage of whatsoever nature and however arising from any variation made to this drawing or in the execution of the work to which it relates which has not been referred to them and their approval obtained.  
Areas are based on unchecked survey and are approximate only.  
Do not scale from this drawing or the digital data, only figured dimensions are to be used. Refer to linear scale for guidance.  
Check all dimensions on site prior to carrying out any works and advise any discrepancy



- KEY**
- Assumed boundary line
  - Existing footprint



PLANNING

**KSR** ARCHITECTS & INTERIOR DESIGNERS  
KSR Architects LLP    mail@ksrarchitects.com  
14 Greenland Street    t: +44 (0)20 7692 5000  
London NW1 0ND    www.ksrarchitects.com

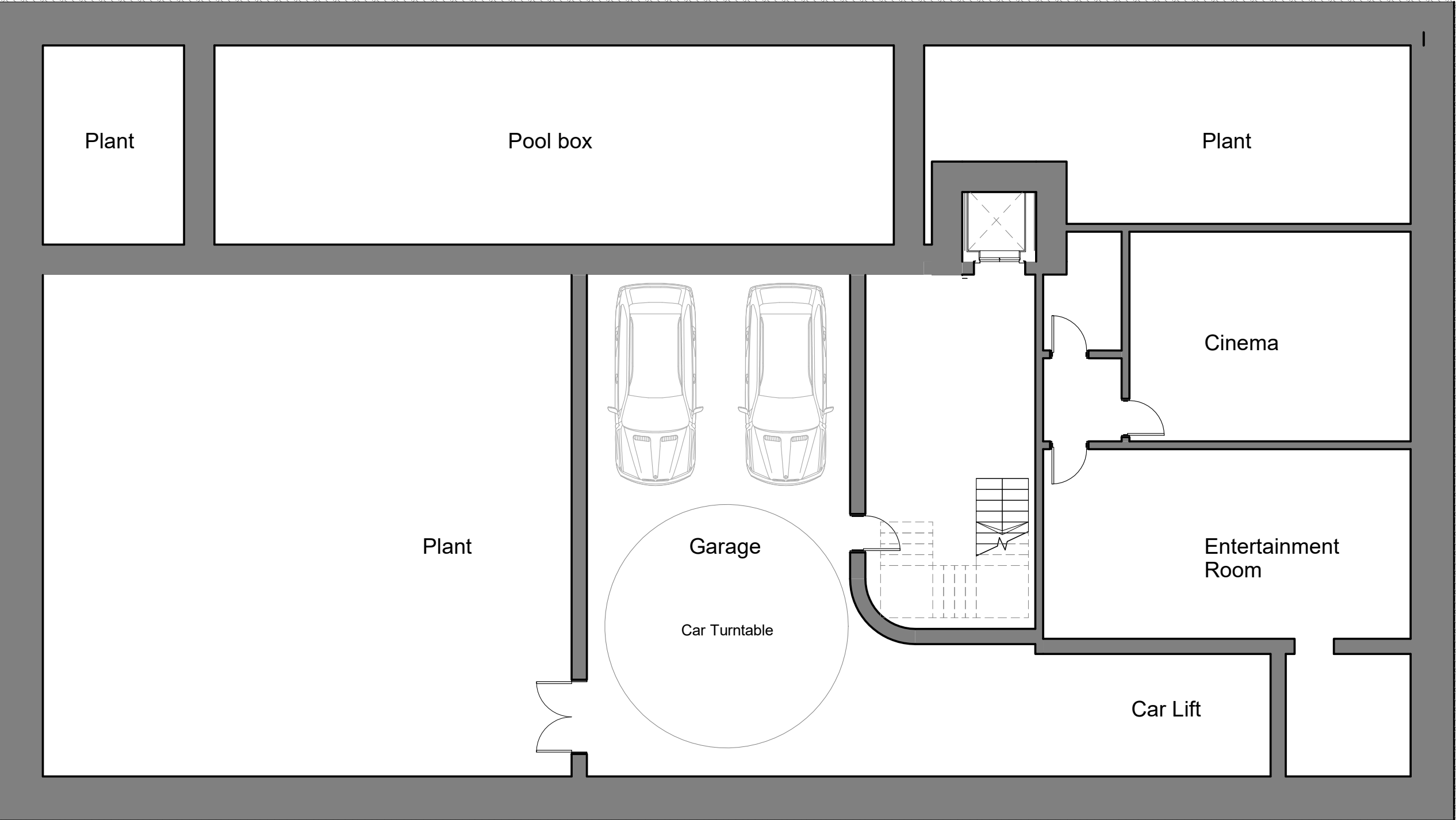
77 Avenue Road

Proposed site plan

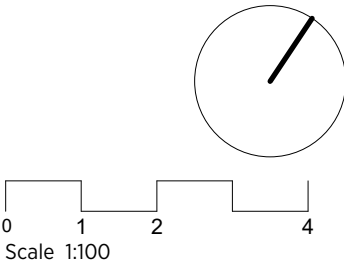
Date: 27/04/21	Status:
Scale: 1:250 @ A3	© KSR Architects
Project Ref: 21002	Drawing No: P002

IN CONJUNCTION WITH  
MIRA A -Architecture & Engineering

1 Proposed site plan  
1 : 250



GENERAL NOTES:  
This drawing is copyright of KSR architects.  
This drawing must be read in conjunction with the Designer's Risk Assessment, specification and all other relevant documentation and drawings.  
KSR architects accept no liability for any expense, loss or damage of whatsoever nature and however arising from any variation made to this drawing or in the execution of the work to which it relates which has not been referred to them and their approval obtained.  
Areas are based on unchecked survey and are approximate only.  
Do not scale from this drawing or the digital data, only figured dimensions are to be used. Refer to linear scale for guidance.  
Check all dimensions on site prior to carrying out any works and advise any discrepancy



PLANNING

**KSR** ARCHITECTS & INTERIOR DESIGNERS  
KSR Architects LLP    mail@ksrarchitects.com  
14 Greenland Street    t: +44 (0)20 7692 5000  
London NW1 0ND    www.ksrarchitects.com

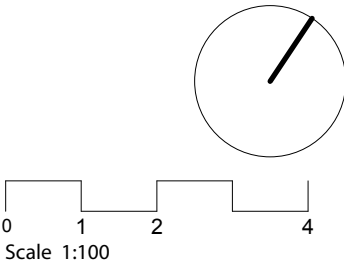
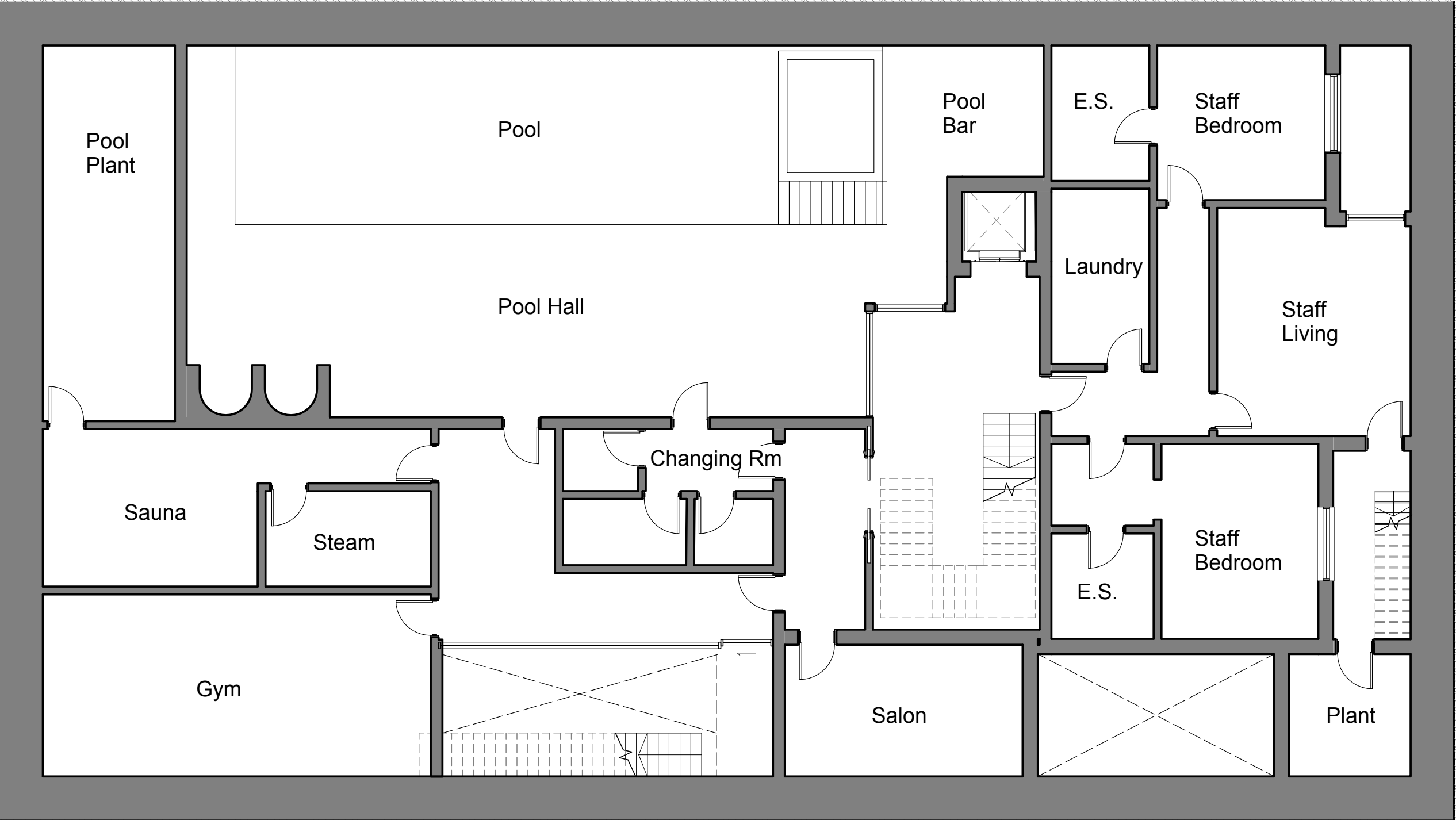
77 Avenue Road

Basement Plan

Date: 27/04/21	Status:
Scale: 1:100 @ A3	© KSR Architects
Project Ref: 21002	Drawing No: P090

IN CONJUNCTION WITH  
MIRA A-Architecture & Engineering

GENERAL NOTES:  
This drawing is copyright of KSR architects.  
This drawing must be read in conjunction with the Designer's Risk Assessment, specification and all other relevant documentation and drawings.  
KSR architects accept no liability for any expense, loss or damage of whatsoever nature and however arising from any variation made to this drawing or in the execution of the work to which it relates which has not been referred to them and their approval obtained.  
Areas are based on unchecked survey and are approximate only.  
Do not scale from this drawing or the digital data, only figured dimensions are to be used. Refer to linear scale for guidance.  
Check all dimensions on site prior to carrying out any works and advise any discrepancy



PLANNING

**KSR** ARCHITECTS & INTERIOR DESIGNERS  
KSR Architects LLP    mail@ksrarchitects.com  
14 Greenland Street    t: +44 (0)20 7692 5000  
London NW1 0ND    www.ksrarchitects.com

77 Avenue Road

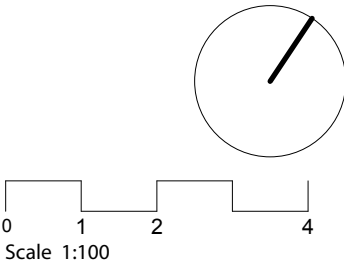
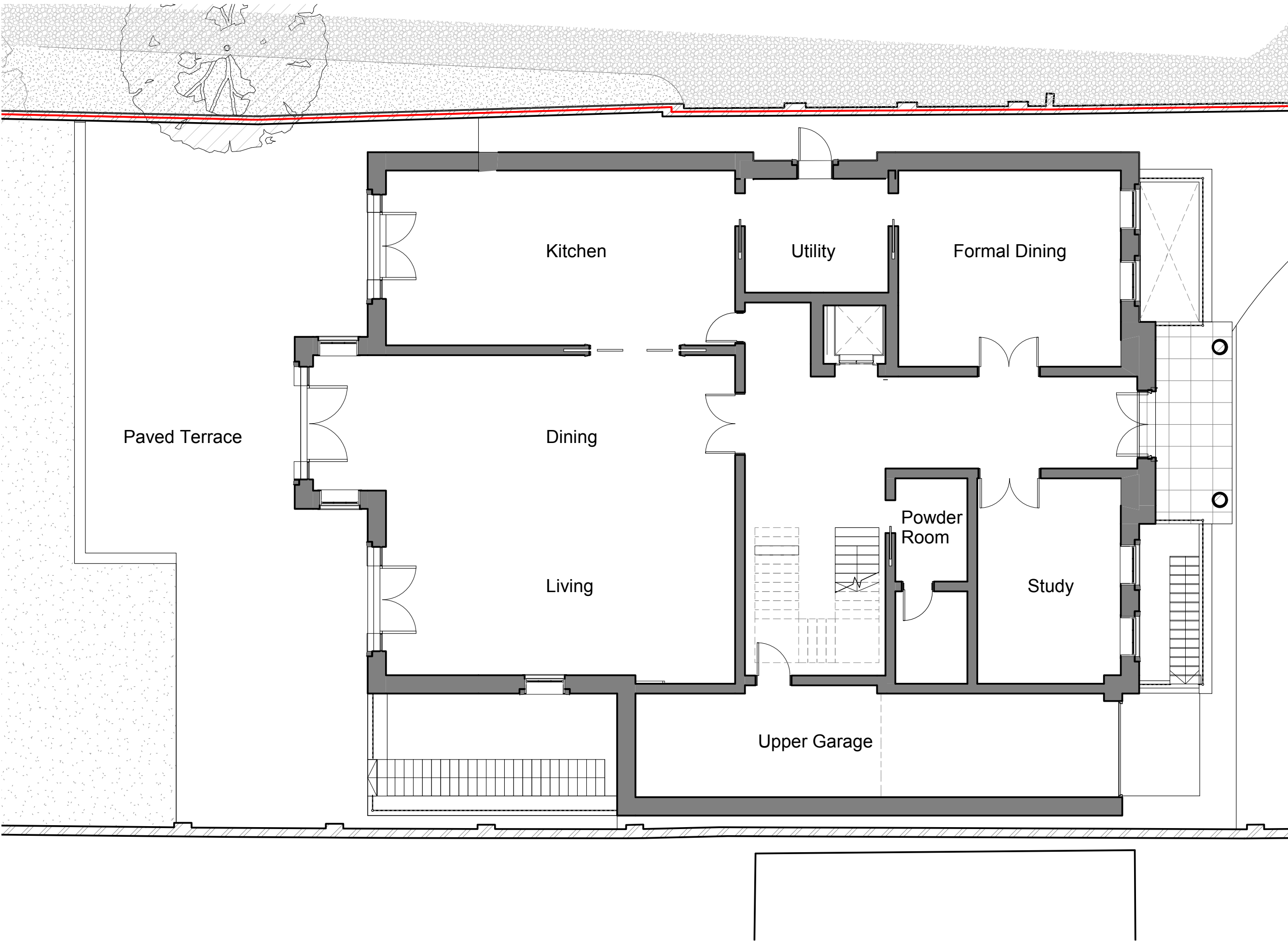
Proposed Lower Ground Floor Plan

Date: 16/08/21	Status:
Scale: 1:100 @ A3	© KSR Architects
Project Ref: 21002	Drawing No: P091
	Revision:

IN CONJUNCTION WITH  
MIRA A -Architecture & Engineering

1 Proposed Basement  
1:100

GENERAL NOTES:  
This drawing is copyright of KSR architects.  
This drawing must be read in conjunction with the Designer's Risk Assessment, specification and all other relevant documentation and drawings.  
KSR architects accept no liability for any expense, loss or damage of whatsoever nature and however arising from any variation made to this drawing or in the execution of the work to which it relates which has not been referred to them and their approval obtained.  
Areas are based on unchecked survey and are approximate only.  
Do not scale from this drawing or the digital data, only figured dimensions are to be used. Refer to linear scale for guidance.  
Check all dimensions on site prior to carrying out any works and advise any discrepancy



PLANNING

**KSR** ARCHITECTS & INTERIOR DESIGNERS  
KSR Architects LLP    mal@ksrarchitects.com  
14 Greenland Street    t: +44 (0)20 7692 5000  
London NW1 0ND    www.ksrarchitects.com

77 Avenue Road

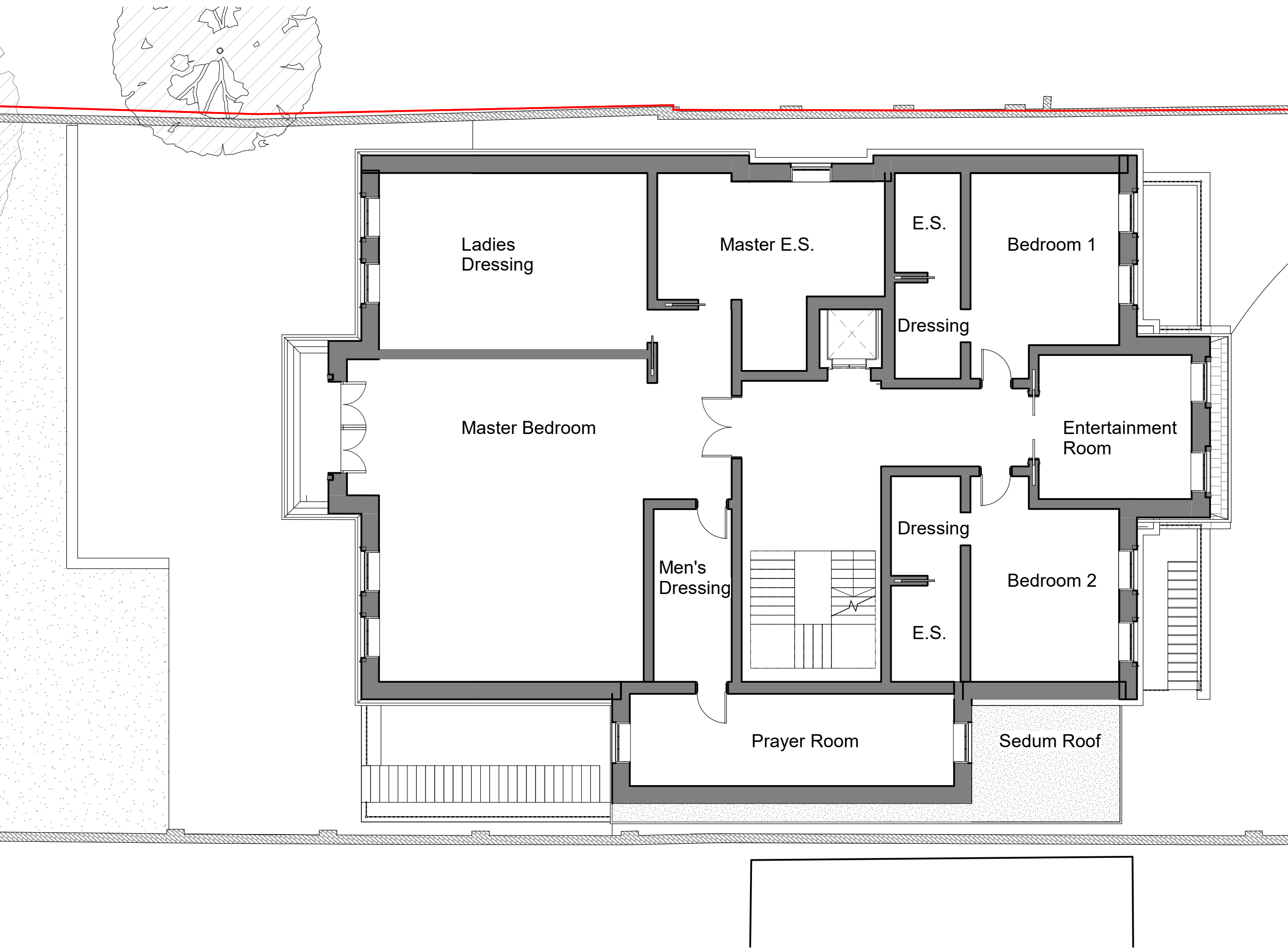
Proposed Ground Floor

Date: 16/08/21	Status:
Scale: 1:100 @ A3	© KSR Architects
Project Ref: 21002	Drawing No: P100

IN CONJUNCTION WITH  
MIRA A -Architecture & Engineering



GENERAL NOTES:  
This drawing is copyright of KSR architects.  
This drawing must be read in conjunction with the Designer's Risk Assessment, specification and all other relevant documentation and drawings.  
KSR architects accept no liability for any expense, loss or damage of whatsoever nature and however arising from any variation made to this drawing or in the execution of the work to which it relates which has not been referred to them and their approval obtained.  
Areas are based on unchecked survey and are approximate only.  
Do not scale from this drawing or the digital data, only figured dimensions are to be used. Refer to linear scale for guidance.  
Check all dimensions on site prior to carrying out any works and advise any discrepancy



PLANNING

**KSR** ARCHITECTS & INTERIOR DESIGNERS  
KSR Architects LLP 14 Greenland Street London NW1 0ND  
mail@ksrarchitects.com t: +44 (0)20 7692 5000 www.ksrarchitects.com

77 Avenue Road

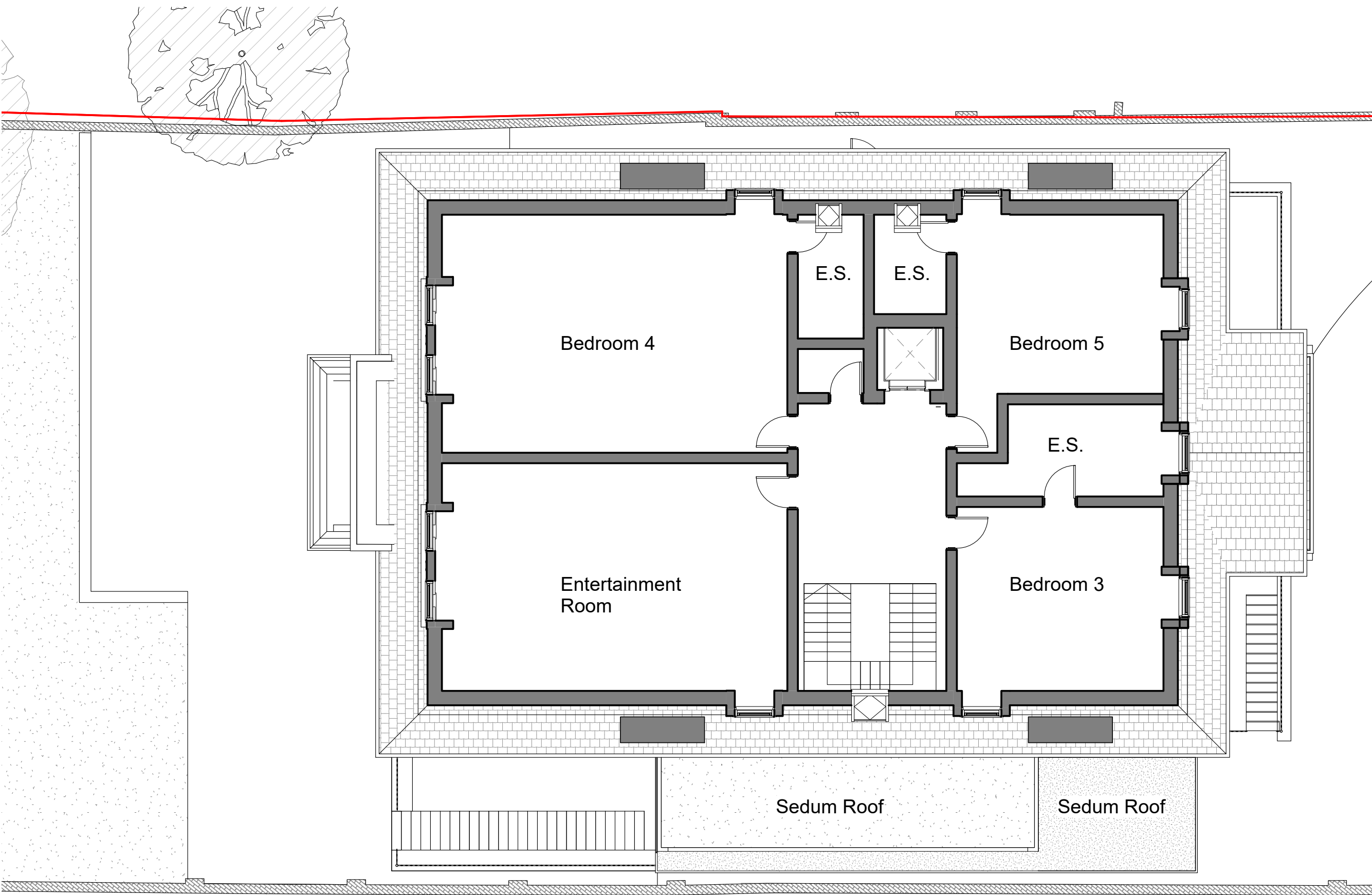
Proposed First Floor Plan

Date: 16/08/21	Status:
Scale: 1:100 @ A3	© KSR Architects
Project Ref: 21002	Drawing No: P101
	Revision:

IN CONJUNCTION WITH  
MIRA A-Architecture & Engineering

**1** Proposed First Floor  
1:100

GENERAL NOTES:  
This drawing is copyright of KSR architects.  
This drawing must be read in conjunction with the Designer's Risk Assessment, specification and all other relevant documentation and drawings.  
KSR architects accept no liability for any expense, loss or damage of whatsoever nature and however arising from any variation made to this drawing or in the execution of the work to which it relates which has not been referred to them and their approval obtained.  
Areas are based on unchecked survey and are approximate only.  
Do not scale from this drawing or the digital data, only figured dimensions are to be used. Refer to linear scale for guidance.  
Check all dimensions on site prior to carrying out any works and advise any discrepancy



PLANNING

**KSR** ARCHITECTS &  
INTERIOR DESIGNERS  
KSR Architects LLP  
14 Greenland Street  
London NW1 0ND  
mail@ksrarchitects.com  
t: +44 (0)20 7692 5000  
www.ksrarchitects.com

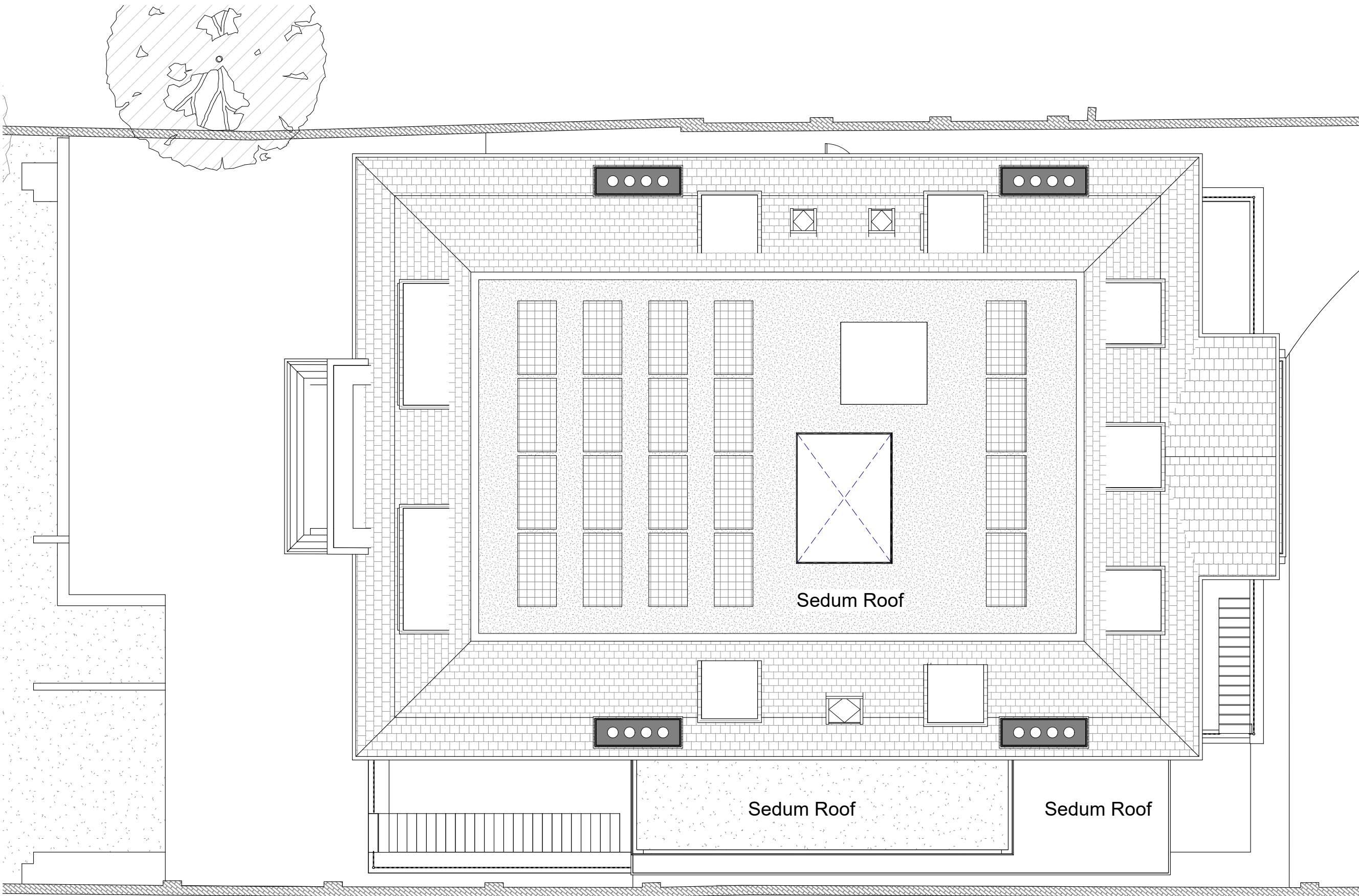
77 Avenue Road

Proposed Second Floor

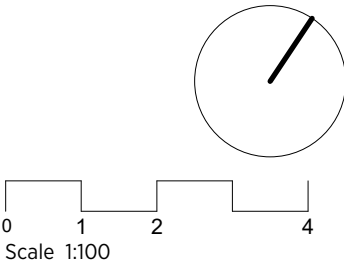
Date: 16/08/21	Status:
Scale: 1:100 @ A3	© KSR Architects
Project Ref: 21002	Drawing No: P102

IN CONJUNCTION WITH  
MIRA A-Architecture & Engineering

**1** Proposed Second Floor  
1:100



GENERAL NOTES:  
This drawing is copyright of KSR architects.  
This drawing must be read in conjunction with the Designer's Risk Assessment, specification and all other relevant documentation and drawings.  
KSR architects accept no liability for any expense, loss or damage of whatsoever nature and however arising from any variation made to this drawing or in the execution of the work to which it relates which has not been referred to them and their approval obtained.  
Areas are based on unchecked survey and are approximate only.  
Do not scale from this drawing or the digital data, only figured dimensions are to be used. Refer to linear scale for guidance.  
Check all dimensions on site prior to carrying out any works and advise any discrepancy



PLANNING

**KSR** ARCHITECTS & INTERIOR DESIGNERS  
KSR Architects LLP    mail@ksrarchitects.com  
14 Greenland Street    t: +44 (0)20 7692 5000  
London NW1 0ND    www.ksrarchitects.com

77 Avenue Road

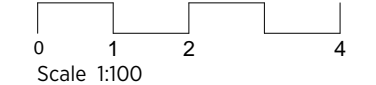
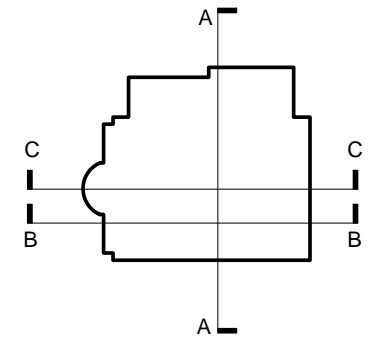
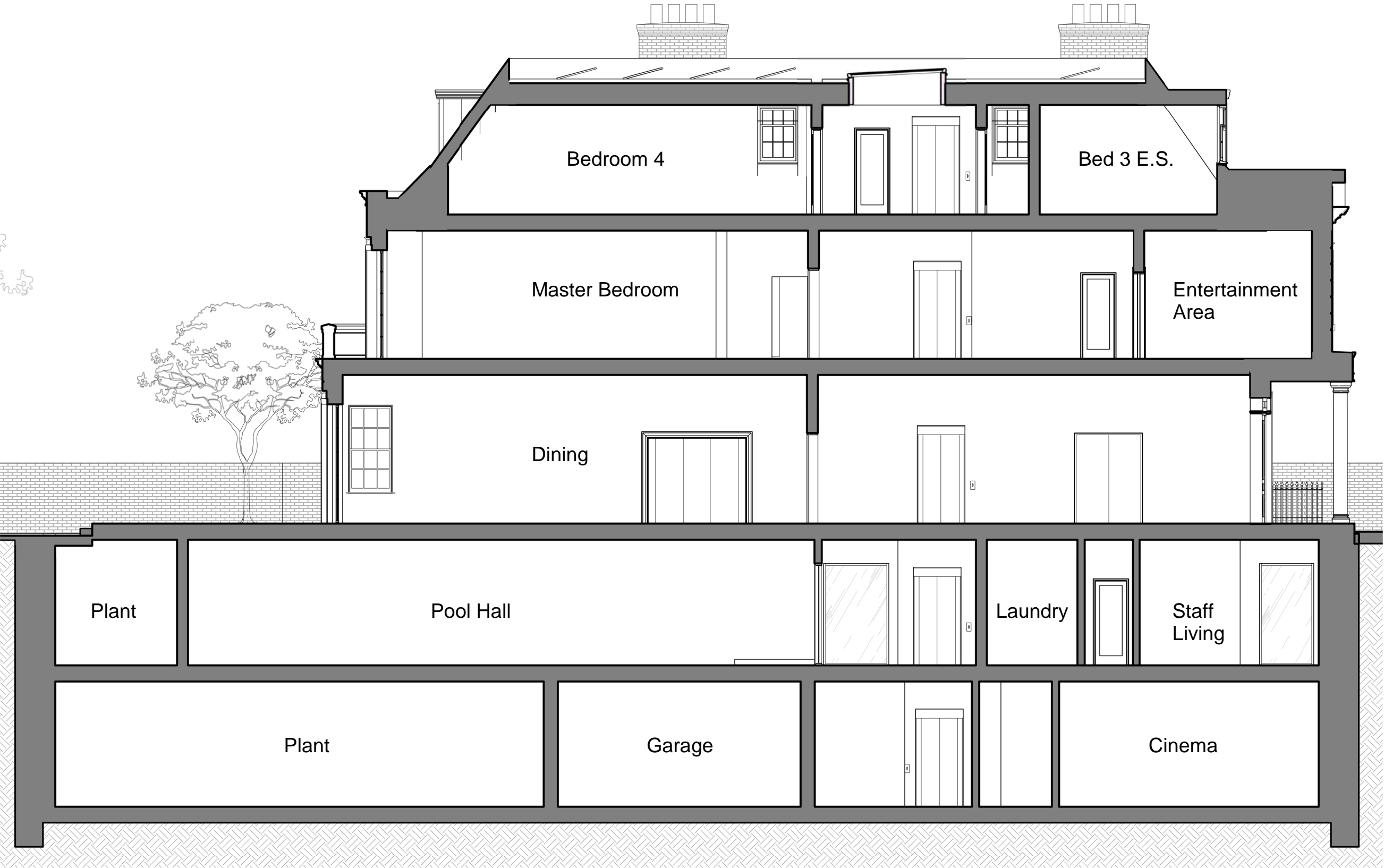
Proposed Roof Plan

Date: 16/08/21	Status:
Scale: 1:100 @ A3	© KSR Architects
Project Ref: 21002	Drawing No: P103
	Revision:

IN CONJUNCTION WITH  
MIRA A-Architecture & Engineering

**1** Proposed Roof Plan  
1 : 100

GENERAL NOTES:  
This drawing is copyright of KSR architects.  
This drawing must be read in conjunction with the Designer's Risk Assessment, specification and all other relevant documentation and drawings.  
KSR architects accept no liability for any expense, loss or damage of whatsoever nature and however arising from any variation made to this drawing or in the execution of the work to which it relates which has not been referred to them and their approval obtained.  
Areas are based on unchecked survey and are approximate only.  
Do not scale from this drawing or the digital data, only figured dimensions are to be used. Refer to linear scale for guidance.  
Check all dimensions on site prior to carrying out any works and advise any discrepancy



PLANNING

**KSR** ARCHITECTS & INTERIOR DESIGNERS  
KSR Architects LLP    mail@ksrarchitects.com  
14 Greenland Street    t: +44 (0)20 7692 5000  
London NW1 0ND    www.ksrarchitects.com

77 Avenue Road

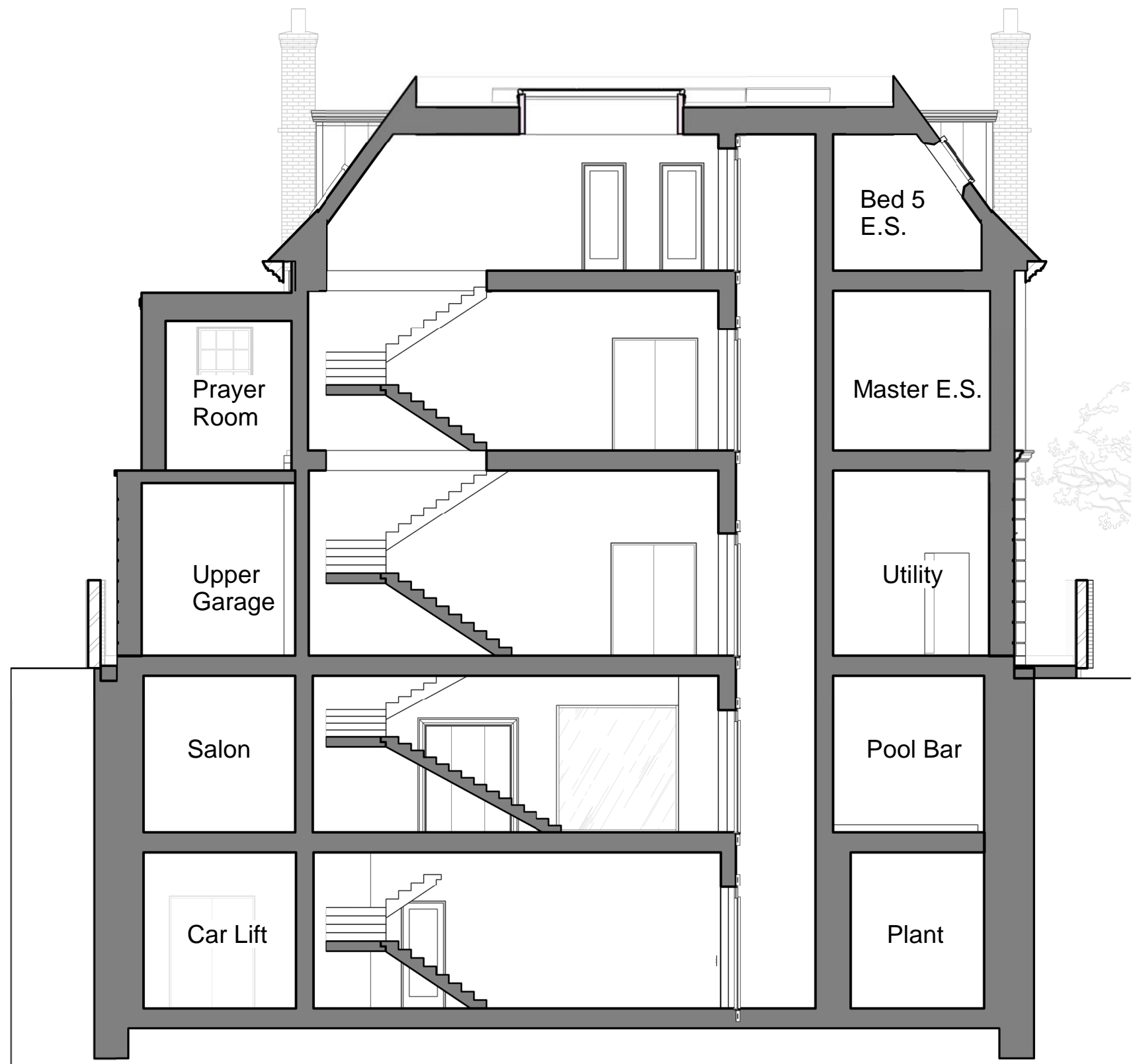
Proposed Section AA

Date: 27/04/21	Status:
Scale: 1:100 @ A3	© KSR Architects
Project Ref: 21002	Drawing No: P200

IN CONJUNCTION WITH  
MIRA A-Architecture & Engineering

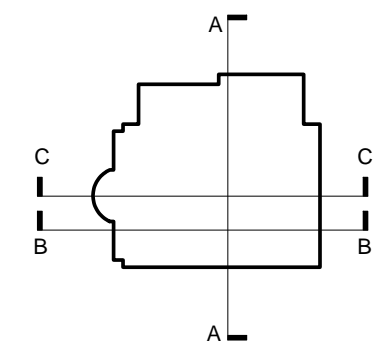
1 Section 1  
1:100





1 Section DD  
1:100

GENERAL NOTES:  
This drawing is copyright of KSR architects.  
This drawing must be read in conjunction with the Designer's Risk Assessment, specification and all other relevant documentation and drawings.  
KSR architects accept no liability for any expense, loss or damage of whatsoever nature and however arising from any variation made to this drawing or in the execution of the work to which it relates which has not been referred to them and their approval obtained.  
Areas are based on unchecked survey and are approximate only.  
Do not scale from this drawing or the digital data, only figured dimensions are to be used. Refer to linear scale for guidance.  
Check all dimensions on site prior to carrying out any works and advise any discrepancy



0 1 2 4  
Scale 1:100

PLANNING

**KSR** ARCHITECTS &  
INTERIOR DESIGNERS  
KSR Architects LLP mail@ksrarchitects.com  
14 Greenland Street t: +44 (0)20 7692 5000  
London NW1 0ND www.ksrarchitects.com

77 Avenue Road

Proposed Section BB

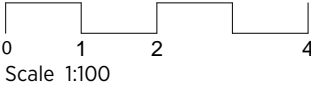
Date: 27/04/21	Status:
Scale: 1:100 @ A3	© KSR Architects
Project Ref: 21002	Drawing No: P201

IN CONJUNCTION WITH  
MIRA A-Architecture & Engineering

GENERAL NOTES:  
This drawing is copyright of KSR architects.  
This drawing must be read in conjunction with the Designer's Risk Assessment, specification and all other relevant documentation and drawings.  
KSR architects accept no liability for any expense, loss or damage of whatsoever nature and however arising from any variation made to this drawing or in the execution of the work to which it relates which has not been referred to them and their approval obtained.  
Areas are based on unchecked survey and are approximate only.  
Do not scale from this drawing or the digital data, only figured dimensions are to be used. Refer to linear scale for guidance.  
Check all dimensions on site prior to carrying out any works and advise any discrepancy



1 Front Elevation  
1:100



PLANNING

**KSR** ARCHITECTS &  
INTERIOR DESIGNERS  
KSR Architects LLP    mail@ksrarchitects.com  
14 Greenland Street    t: +44 (0)20 7692 5000  
London NW1 0ND    www.ksrarchitects.com

77 Avenue Road

Proposed Front Elevation

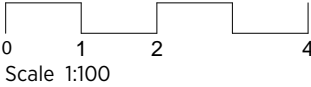
Date: 16/08/21	Status:
Scale: 1:100 @ A3	© KSR Architects
Project Ref:	Drawing No:    Revision:
21002	P300

IN CONJUNCTION WITH  
MIRA A-Architecture & Engineering

GENERAL NOTES:  
This drawing is copyright of KSR architects.  
This drawing must be read in conjunction with the Designer's Risk Assessment, specification and all other relevant documentation and drawings.  
KSR architects accept no liability for any expense, loss or damage of whatsoever nature and however arising from any variation made to this drawing or in the execution of the work to which it relates which has not been referred to them and their approval obtained.  
Areas are based on unchecked survey and are approximate only.  
Do not scale from this drawing or the digital data, only figured dimensions are to be used. Refer to linear scale for guidance.  
Check all dimensions on site prior to carrying out any works and advise any discrepancy



1 Rear elevation  
1:100



PLANNING

**KSR** ARCHITECTS &  
INTERIOR DESIGNERS  
KSR Architects LLP    mail@ksrarchitects.com  
14 Greenland Street    t: +44 (0)20 7692 5000  
London NW1 0ND    www.ksrarchitects.com

77 Avenue Road

Proposed Rear Elevation

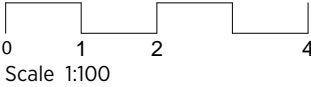
Date: 16/08/21		Status:	
Scale: 1:100 @ A3		© KSR Architects	
Project Ref:	Drawing No:	Revision:	
21002	P301		

IN CONJUNCTION WITH  
MIRA A-Architecture & Engineering

GENERAL NOTES:  
This drawing is copyright of KSR architects.  
This drawing must be read in conjunction with the Designer's Risk Assessment, specification and all other relevant documentation and drawings.  
KSR architects accept no liability for any expense, loss or damage of whatsoever nature and however arising from any variation made to this drawing or in the execution of the work to which it relates which has not been referred to them and their approval obtained.  
Areas are based on unchecked survey and are approximate only.  
Do not scale from this drawing or the digital data, only figured dimensions are to be used. Refer to linear scale for guidance.  
Check all dimensions on site prior to carrying out any works and advise any discrepancy



**1** South Side Elevation  
1 : 100



PLANNING

**KSR** ARCHITECTS &  
INTERIOR DESIGNERS  
KSR Architects LLP    mail@ksrarchitects.com  
14 Greenland Street    t: +44 (0)20 7692 5000  
London NW1 0ND    www.ksrarchitects.com

77 Avenue Road

Proposed Side-South Elevation

Date: 16/08/21	Status:
Scale: 1:100 @ A3	© KSR Architects
Project Ref:	Drawing No:    Revision:
21002	P302

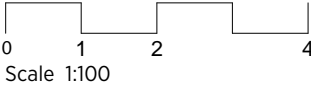
IN CONJUNCTION WITH  
MIRA A-Architecture & Engineering



GENERAL NOTES:  
This drawing is copyright of KSR architects.  
This drawing must be read in conjunction with the Designer's Risk Assessment, specification and all other relevant documentation and drawings.  
KSR architects accept no liability for any expense, loss or damage of whatsoever nature and however arising from any variation made to this drawing or in the execution of the work to which it relates which has not been referred to them and their approval obtained.  
Areas are based on unchecked survey and are approximate only.  
Do not scale from this drawing or the digital data, only figured dimensions are to be used. Refer to linear scale for guidance.  
Check all dimensions on site prior to carrying out any works and advise any discrepancy



**1** North Side Elevation  
1 : 100



PLANNING

**KSR** ARCHITECTS &  
INTERIOR DESIGNERS  
KSR Architects LLP    mail@ksrarchitects.com  
14 Greenland Street    t: +44 (0)20 7692 5000  
London NW1 0ND    www.ksrarchitects.com

77 Avenue Road

Proposed Side-North Elevation

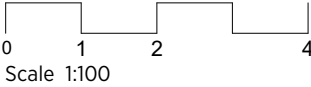
Date: 16/08/21	Status:
Scale: 1:100 @ A3	© KSR Architects
Project Ref:	Drawing No:    Revision:
21002	P303

IN CONJUNCTION WITH  
MIRA A-Architecture & Engineering

GENERAL NOTES:  
This drawing is copyright of KSR architects.  
This drawing must be read in conjunction with the Designer's Risk Assessment, specification and all other relevant documentation and drawings.  
KSR architects accept no liability for any expense, loss or damage of whatsoever nature and however arising from any variation made to this drawing or in the execution of the work to which it relates which has not been referred to them and their approval obtained.  
Areas are based on unchecked survey and are approximate only.  
Do not scale from this drawing or the digital data, only figured dimensions are to be used. Refer to linear scale for guidance.  
Check all dimensions on site prior to carrying out any works and advise any discrepancy



1 Street Elevation  
1:200



PLANNING

**KSR** ARCHITECTS &  
INTERIOR DESIGNERS  
KSR Architects LLP    mail@ksrarchitects.com  
14 Greenland Street    t: +44 (0)20 7692 5000  
London NW1 0ND    www.ksrarchitects.com

77 Avenue Road

Proposed Street Elevation

Date: 16/08/21	Status:
Scale: 1:200 @ A3	© KSR Architects
Project Ref:	Drawing No:    Revision:
21002	P305

IN CONJUNCTION WITH  
MIRA A-Architecture & Engineering