

51-53 HATTON GARDEN

ENTRANCE RAMP & BALUSTRADE PROPOSAL

13.10.21



Street view

1:12 ramp for
step free access

Dark brown metal
balustrade with
intercom



Front facade

1:12 ramp for
step free
access

Dark brown metal
balustrade with
intercom

1:12 ramp for
step free
access

1.0 SUMMARY OF PROPOSAL OF ENTRANCE RAMP & BALUSTRADE

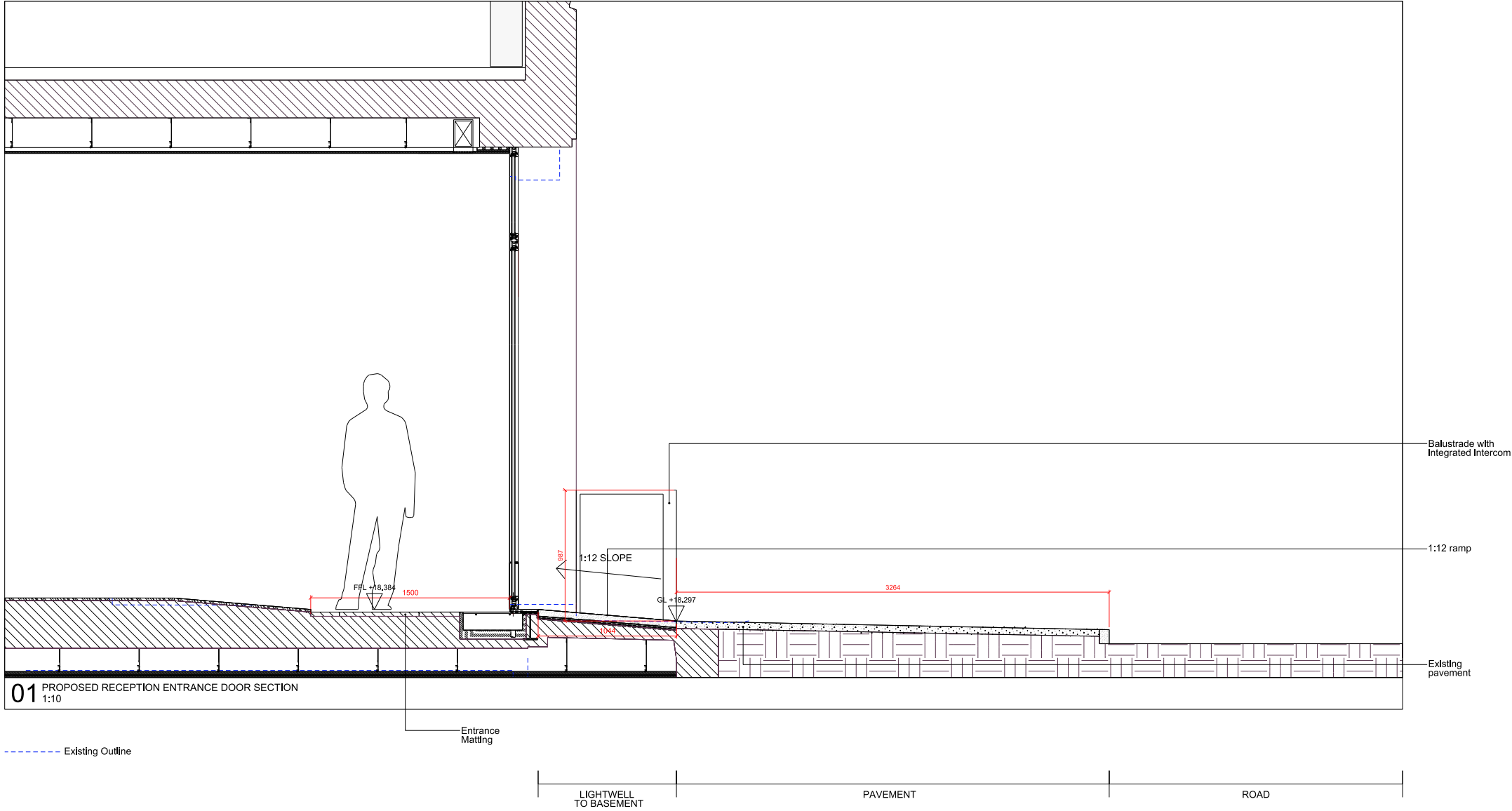
In order to provide the step free access to the building, which the existing entry arrangement doesn't offer, we propose to introduce new 1:12 ramps at both entrances and balustrade from the street level to the entrance lobby, replacing existing steps at 51-53 Hatton Garden.

This new proposal is in keeping with the facade of the building. The ramp is made of Portland stone to match the stone pillars on either side of the entrance with a bronze metallic finish to an elegant and simple balustrade which will match the the finish of entrance doors which was approved under application reference 2020/2542/P.

There are a number of neighbouring buildings on Hatton Garden with ramps and steps in their forecourt on the pavement area. We believe that our proposed entry arrangement respects the character of Hatton Garden, and no harm to the harmony of the streetscape is made. We also note that the remaining width of the pavement is 3.2m at the front of 51-53 Hatton Garden, which is considerably wider than the 2.6m pavement of 49 Hatton Garden, next door.

Our proposal is not only to improve the accessibility to the building, but further enhances the entry experience, suitable to the buildings within the vicinity.

1.1
SECTION THROUGH RECEPTION
ENTRANCE AND PAVEMENT



1.2
EXAMPLES OF RAMP/BALLUSTRADES
PROTRUDING ONTO HATTON GARDEN



Ramp and steps infront of
50 Hatton Garden entrance



Balustrades around lightwell of
56 Hatton Garden entrance



Ramp on the side of
60 Hatton Garden entrance