








10-85: proposed Proposed new operable glass roof light over existing pocket garden, to replace existing glass balustrades.

10-84: Proposed new operable glass roof light over existing pocket garden, to replace existing glass balustrades.

COLOUR KEY:

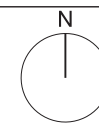
	PLANTED MEADOW		BALUSTRADE
	RAISED CORTEN PLANTER		OPENABLE ROOF LIGHT OVER ATRIUM
	TIMBER DECKING		PENTHOUSE GARDEN DIVIDER
	SATELLITE DISHES		

Rev	Date	Description	By	Chkd
P1	19-09-2014	ISSUED FOR APPROVAL	TGP	JL

FOR PLANNING PURPOSES ONLY



FOR APPROVAL



33 Bowling Green Lane
London
EC1R 0BJ

+44 (0) 20 7608 7900 T
+44 (0) 20 7608 7901 F
www.wilkinsoneyre.com

WilkinsonEyre.Architects

Project: KING'S CROSS GAS HOLDER TRIPLETS

Title: Roof General Arrangement Plans

Scale: 1:500 @ A3
Drawing and CAD File Number: KX_WEA823_A_N1_9015
Rev: P1