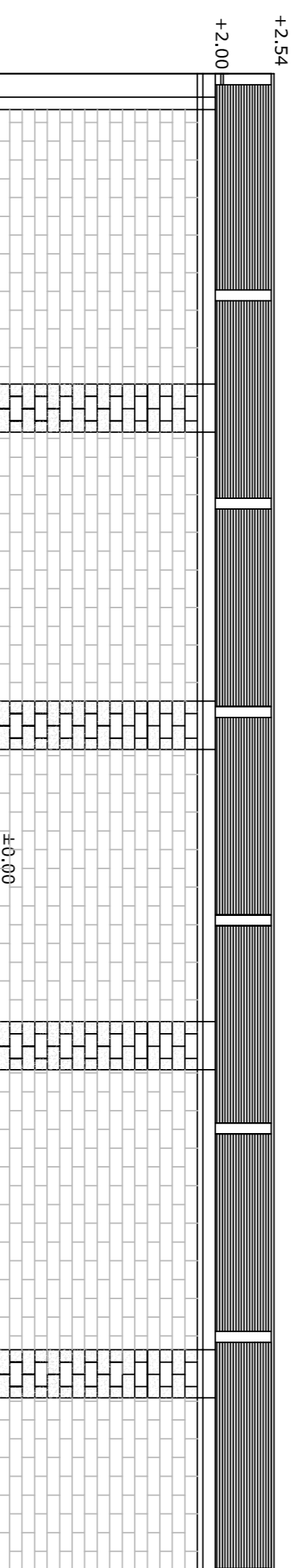


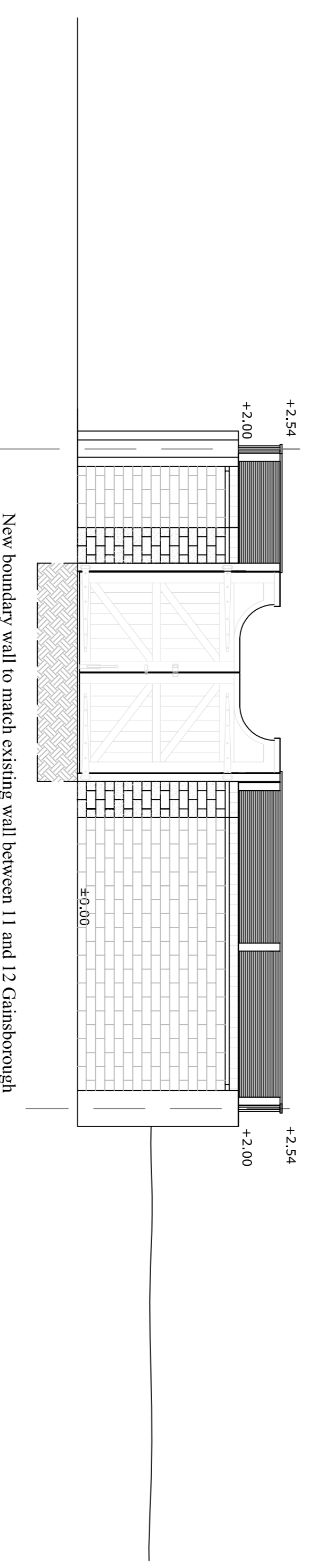
Existing boundary wall in red/brown multi-stock bricks in English bond flush pointing with brick on edge coping; creasing tile; piers in red/brown multi-stock bricks to match main house with engineering brick quoins; timber trellis above.

Garden Wall to No. 11 Gainsborough Gardens - UNCHANGED



New boundary wall to match existing wall between 11 and 12 Gainsborough Gardens in red/brown multi-stock bricks in English bond flush pointing with brick on edge coping; creasing tile; piers built in matching red/brown multi-stock bricks with quoins from engineering bricks; timber trellis above.

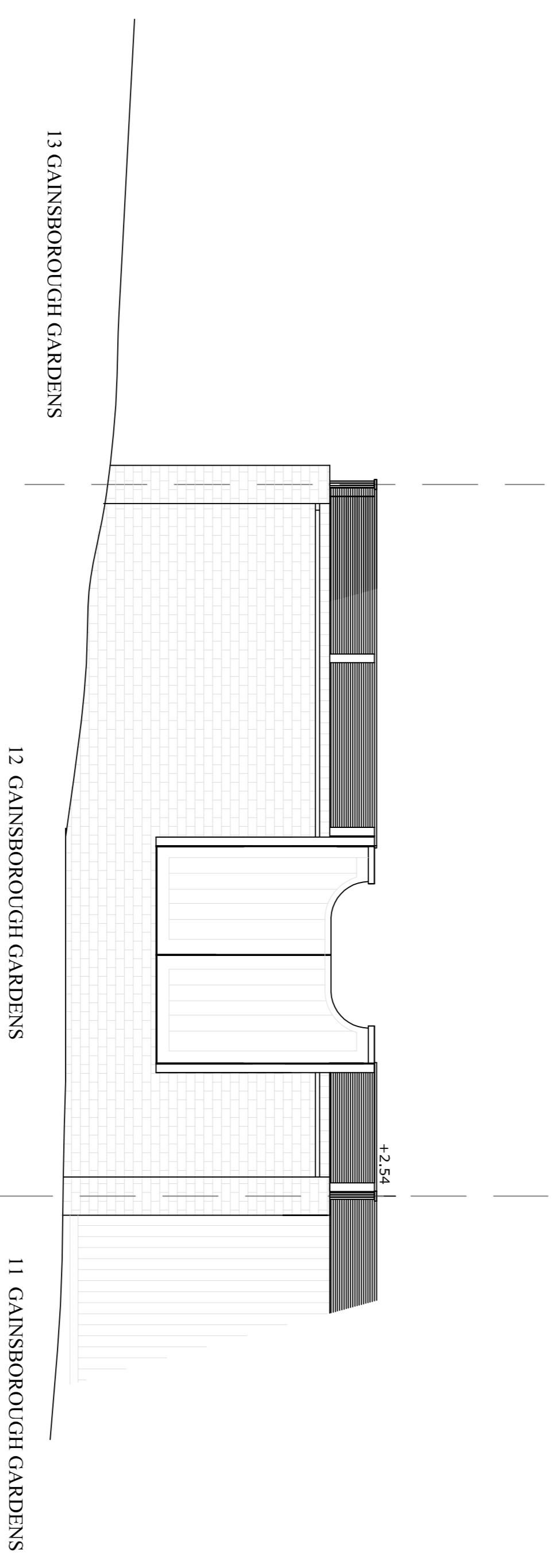
Garden Wall to boundary between Nos. 12 and 13 Gainsborough Gardens



New boundary wall to match existing wall between 11 and 12 Gainsborough Gardens in red/brown multi-stock bricks in English bond flush pointing with brick on edge coping; creasing tile; piers built with matching red/brown multi-stock bricks with engineering brick quoins to match remainder; timber trellis above; pair of framed ledged and braced gates with mortice and tenoned joints fabricated from Scandinavian Redwood (FSC) with all edges chamfered to match existing hung off 100x100mm Redwood posts; re-use existing wrought iron traditional hinges. Timber trellis over to match boundary wall with No. 11.

Infill lower patio area with bricks from demolition well crushed and compacted, hardcore and 300mm topsoil. Continue face brick wall at low level to contain infill, visible from road side only.

End wall facing Christchurch Hill



End wall elevation from Christchurch Hill

REVISIONS			
A	18/2021	Planters removed	
B	13/2021	text clearer	
C	13/2021	brick colour	

PROJECT		DRAWING	
12 Gainsborough Gardens NWS		Elevations	
SCALE	1:50@A1	DRAWING NO.	20.06.05
DATE	13/2020		
Copyright ©2019 HAINE & CO. LTD.		HAINE & CO. ARCHITECTURAL & INTERIOR DESIGN Haine & Co. Ltd. Architectural Design and Project Management 6 Lamballe Place Northampton NN1 1JG Phone: 07721 339009 Email: roh@haineco.com Website: www.haineco.com	