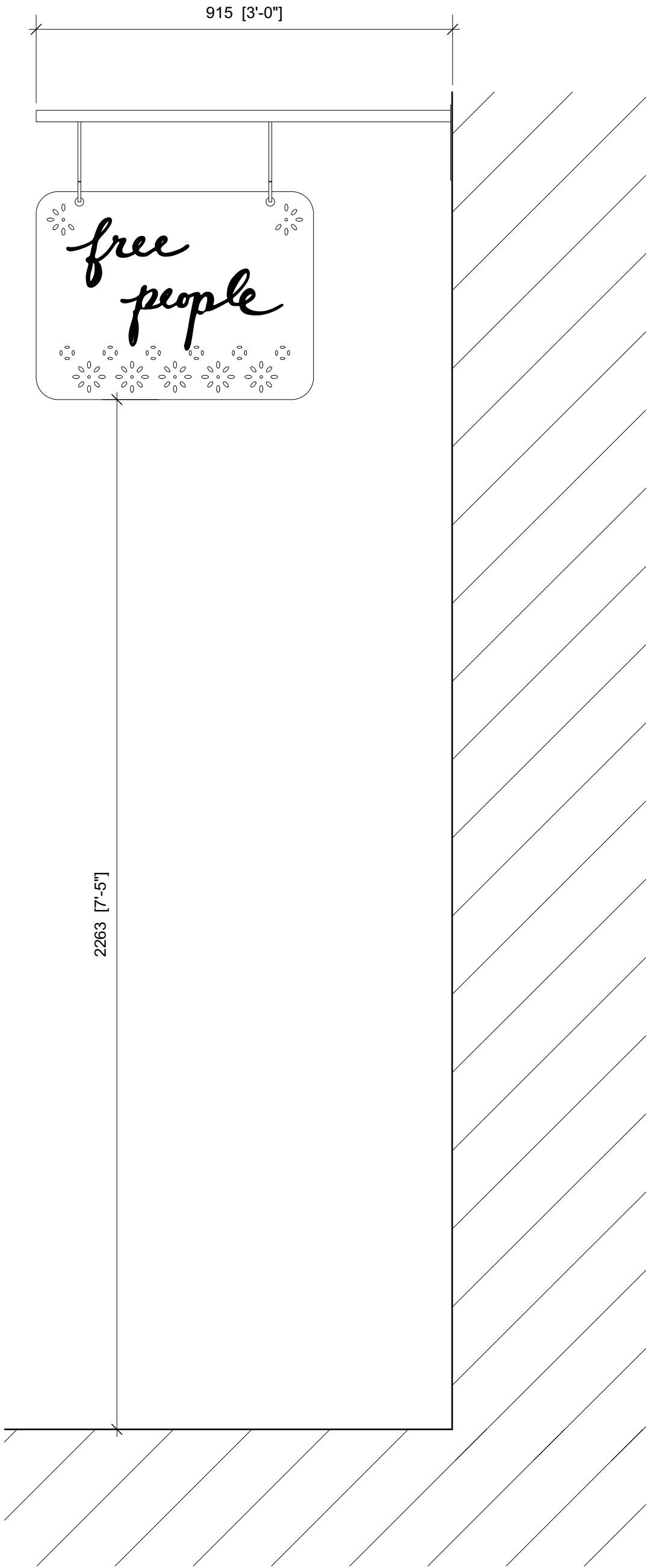




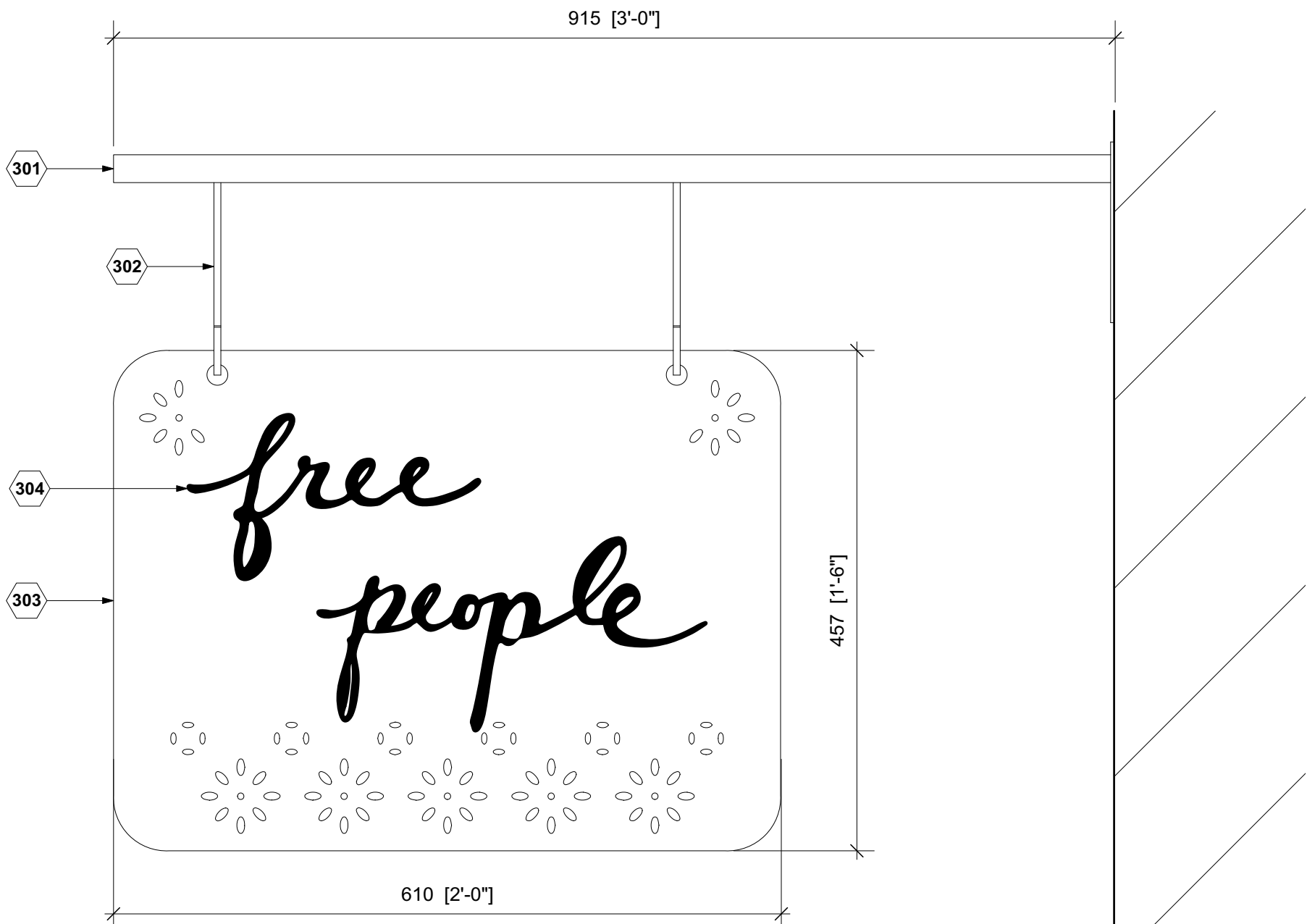
KEY NOTES

- 301 25mm Ø brass hanging bar and base plate resin anchored to storefront pilaster supporting 'Free People' hanging sign.
- 302 5mm Ø brass mounting hangers to support hanging sign
- 303 Hanging sign to be 610 wide x 457 high x 3mm thick in painted finish to match storefront - Farrow & Ball "Pink Ground" ref 202 in exterior eggshell with perforated floral pattern.
- 304 3mm thick x 38mm high powder coated aluminium letters pin mounted to hanging sign with 10mm stand off using 5mm Ø dowels. Stand off dowels and letters to be powder coated in RAL 9005 (black) colour coated finish.



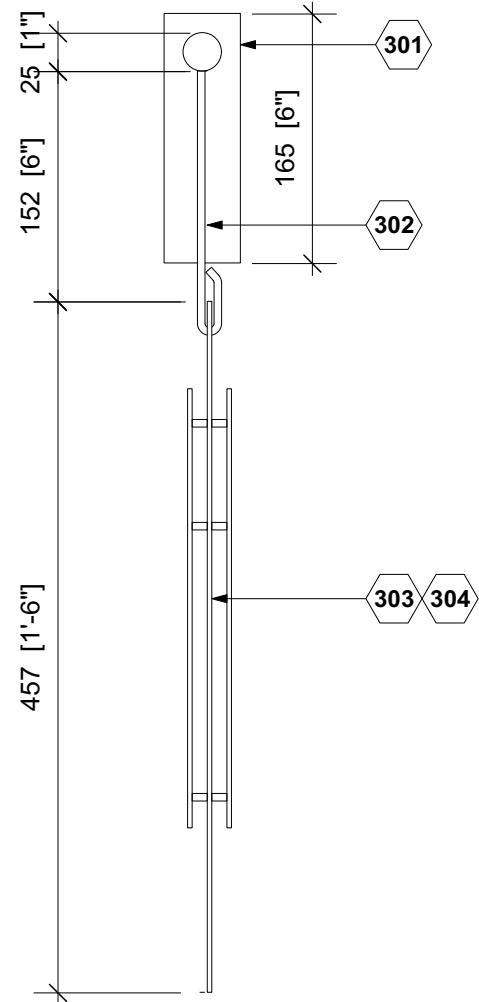
1 SIGN LOCATION ELEVATION

PL301 SCALE: @A1 1:10



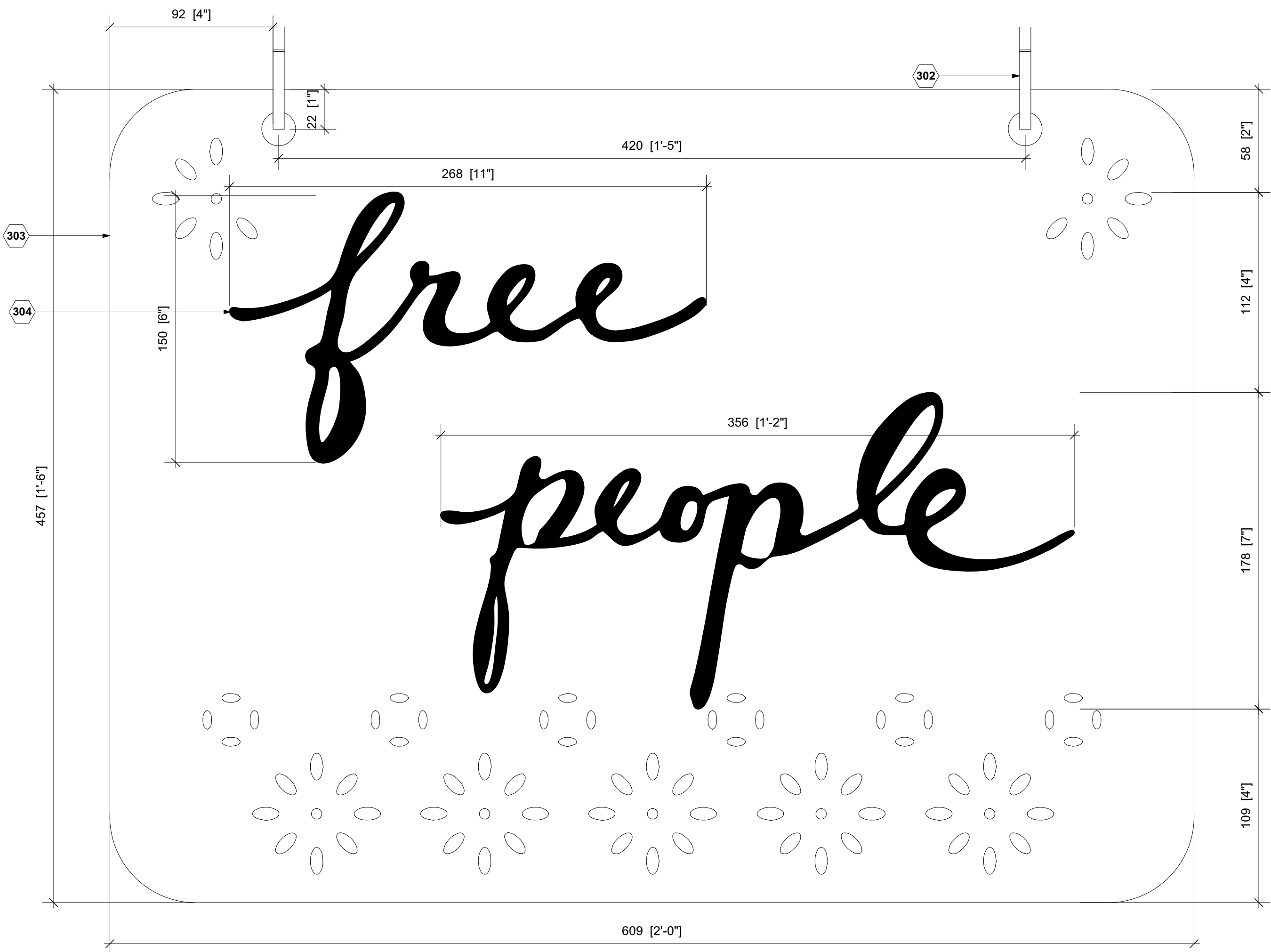
2 SIGN AND BRACKET SIDE ELEVATION

PL301 SCALE: @A1 1:5



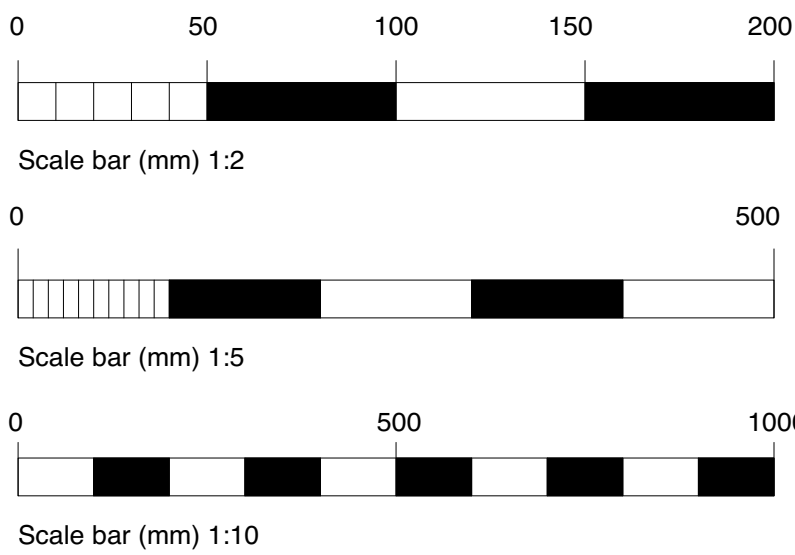
4 SIGN AND BRACKET FRONT ELEVATION

PL301 SCALE: @A1 1:5



3 ENLARGED SIGN ELEVATION

PL301 SCALE: @A1 1:2



Figured dimensions shall be taken in preference to scaled dimensions and any discrepancies or errors are to be referred to the Designer. Contractors, sub-contractors and suppliers must verify all dimensions on site before commencing work or making any fabrication drawings. © Copyright Reserved



For Office Use: A\_12487

*free people*

27 HAMPSTEAD HIGH STREET  
LONDON  
NW3 1QA

CONSULTANT :

*free people*

DRAWN BY:

LN

ISSUE / DATE:

PLANNING 12.10.2021

REVISION :

SHEET TITLE :

**SIGNAGE PROPOSAL**

Proposed Blade Sign  
Details

SHEET NO. :

**PL301**