

VIEW N. 1

VIEW N. 2

VIEW N. 3

VIEW N. 4

VIEW N. 5



VIEW N. 6

VIEW N. 7

VIEW N. 8

VIEW N. 9

VIEW N. 10

VIEW N. 11

VIEW N. 12

VIEW N. 13



VIEW N. 14

VIEW N. 15

VIEW N. 16

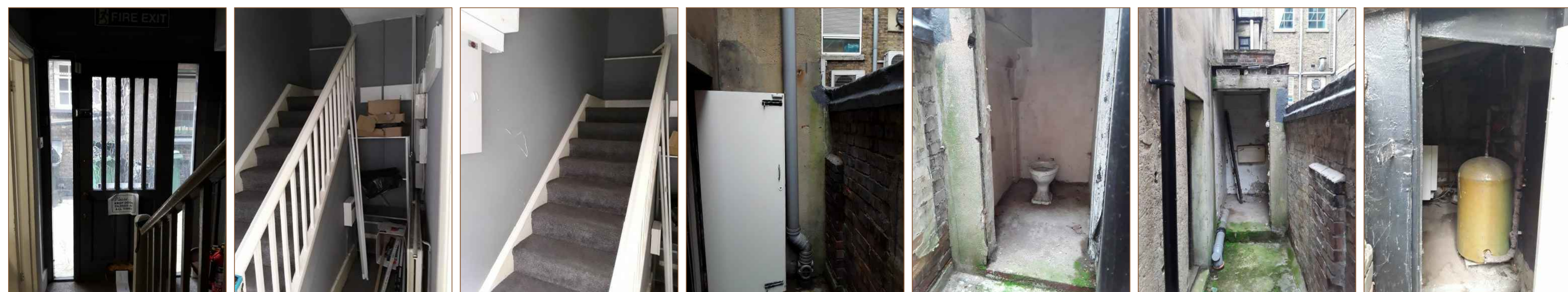
VIEW N. 17

VIEW N. 18

VIEW N. 19

VIEW N. 20

VIEW N. 21



VIEW N. 22

VIEW N. 23

VIEW N. 24

VIEW N. 25

VIEW N. 26

VIEW N. 27

VIEW N. 28

Registered as an architect under the Architect Act 1997



Company n. 11868709 & its office registered in England & Wales  
 Don't scale for building control or construction purpose, may be scaled for planning purpose  
 Any variation or supplementary drawings are to be approved by the Architect  
 Ownership & Copyright of the drawing belongs to ASP Architects London Ltd

Issue for Prior Approval 06/09/2021 0

Description	Date	Rev.

**CLIENT**  
 Newmake Properties Ltd  
 245 Whitton Avenue East  
 Greenford, UB6 0QQ

**LOCAL AUTHORITY**  
 Camden Council



**ASP ARCHITECTS LONDON LTD**  
 Alshajrawi Sami Projects  
 3 Russell Road, Flat n. 2  
 LONDON W14 8JA - ENGLAND  
 E-Mail: info@asparchitects.co.uk  
 www.asparchitects.co.uk  
 Tel. N.: +44 02030341350

**PROJECT:**  
 Change of Use From B1 to C3  
 1-6 Speedy Place, London WC1H 8BU

**TITLE:**  
 Photographic Report  
 Existing Internal - Ground Floor

Drawn By Sami A.	Checked By ASP	Approved By A.A.
---------------------	-------------------	---------------------

Scale 3/16" @ A1	Date 06/09/2021
---------------------	--------------------

Project Code ASP-21105	Drawing No. P151	Revision 0
---------------------------	---------------------	---------------