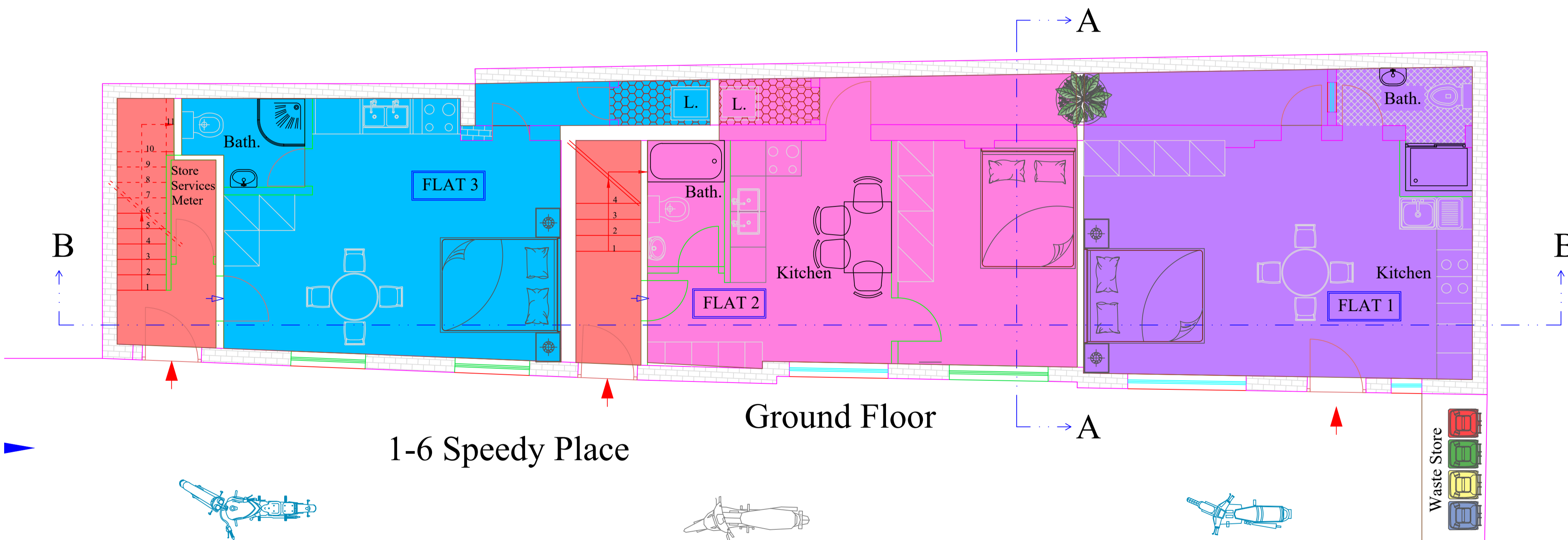
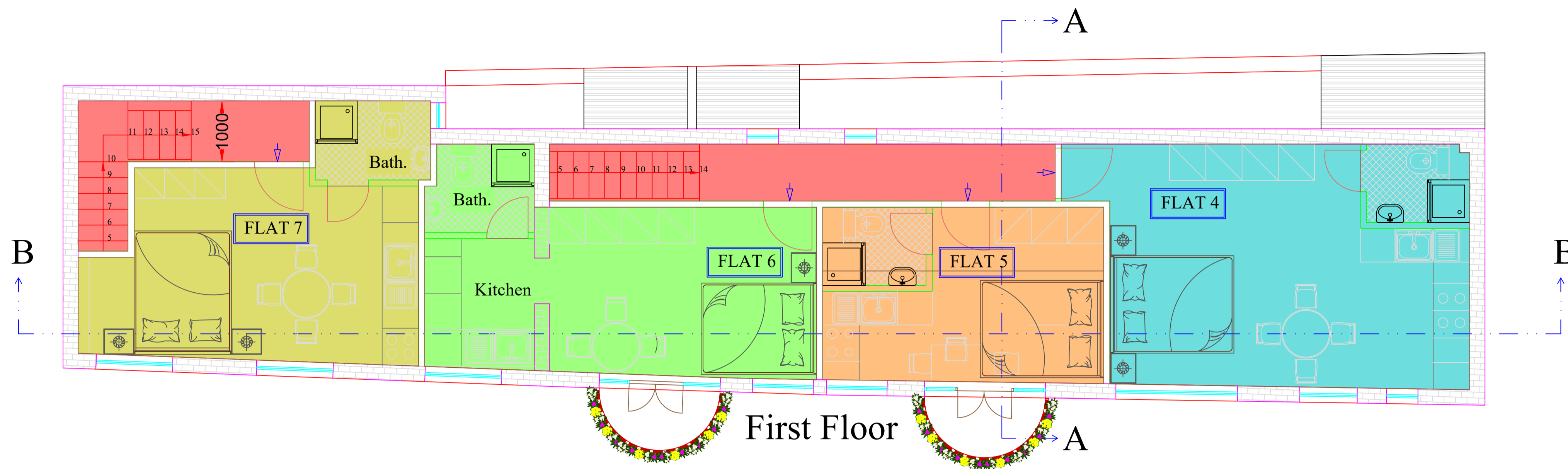
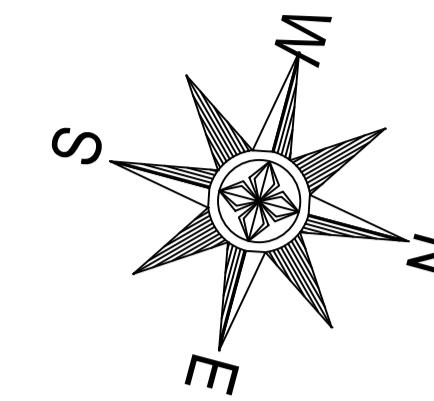


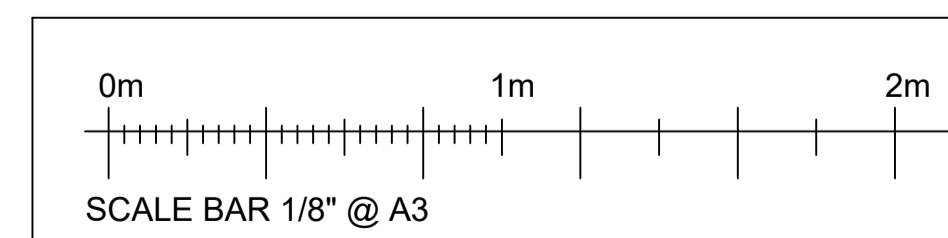
# PROPOSED LAYOUT



1-6 Speedy Place

KEY PLAN

- |                                                                                                               |                                                                                                               |
|---------------------------------------------------------------------------------------------------------------|---------------------------------------------------------------------------------------------------------------|
|  FLAT 1 - G.I.A = 33.26 mq |  FLAT 5 - G.I.A = 13.26 mq |
|  FLAT 2 - G.I.A = 34.05 mq |  FLAT 6 - G.I.A = 19.36 mq |
|  FLAT 3 - G.I.A = 28.32 mq |  FLAT 7 - G.I.A = 18.45 mq |
|  FLAT 4 - G.I.A = 33.96 mq |  COMMOM SPACE              |



Registered as an architect under the Architect Act 1997



Company n. 11868709 & its office registered in England & Wales  
 Don't scale for building control or construction purpose, may be scaled for planning purpose  
 Any variation or supplementary drawings are to be approved by the Architect  
 Ownership & Copyright of the drawing belongs to ASP Architects london Ltd

G.I.A Ground Floor = 109.07 m<sup>2</sup>  
 G.I.A First Floor = 91.03 m<sup>2</sup>

Issue for Prior Approval 06/09/2021 0

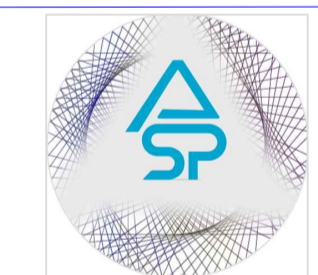
| Description | Date | Rev. |
|-------------|------|------|
|             |      |      |

## CLIENT

Newmake Properties Ltd  
 245 Whitton Avenue East  
 Greenford, UB6 0QQ

## LOCAL AUTHORITY

Camden Council



ASP ARCHITECTS LONDON LTD  
 Alshajrawi Sami Projects  
 3 Russell Road, Flat n. 2  
 LONDON W14 8JA - ENGLAND  
 E-Mail: info@asparchitects.co.uk  
 www.asparchitects.co.uk  
 Tel. N.: +44 02030341350

PROJECT:  
 Change of Use From B1 to C3  
 1-6 Speedy Place, London WC1H 8BU

TITLE:  
 Proposed layout  
 Ground & First Floor

|                     |                   |                     |
|---------------------|-------------------|---------------------|
| Drawn By<br>Sami A. | Checked By<br>ASP | Approved By<br>A.A. |
|---------------------|-------------------|---------------------|

|                          |                    |
|--------------------------|--------------------|
| Scale<br>1/4" (1:40) @A1 | Date<br>06/09/2021 |
|--------------------------|--------------------|

|                           |                     |               |
|---------------------------|---------------------|---------------|
| Project Code<br>ASP-21105 | Drawing No.<br>P200 | Revision<br>0 |
|---------------------------|---------------------|---------------|