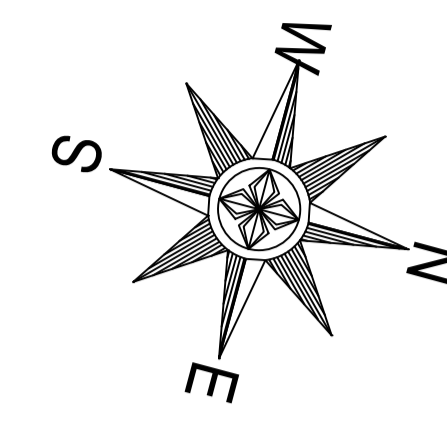
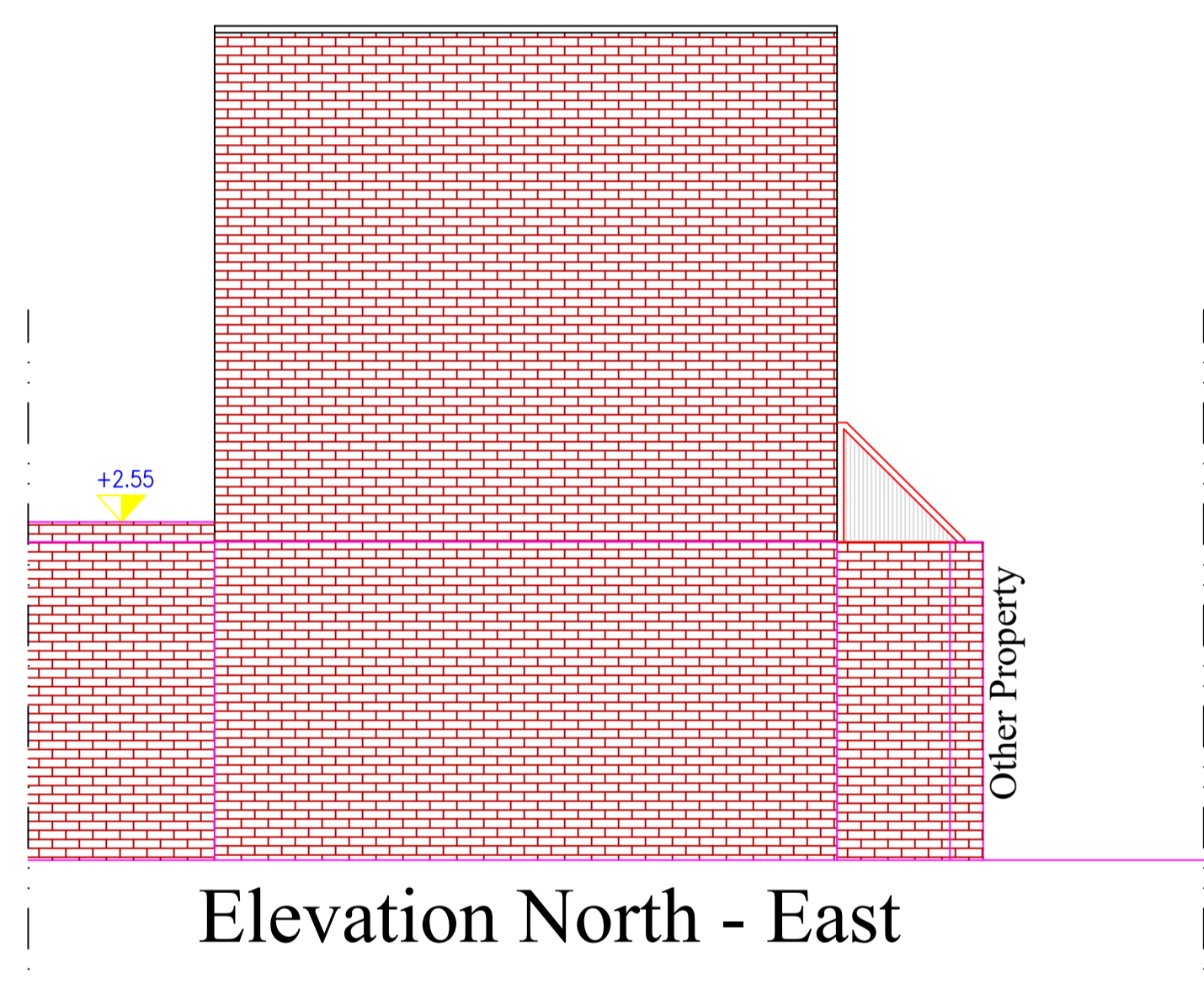


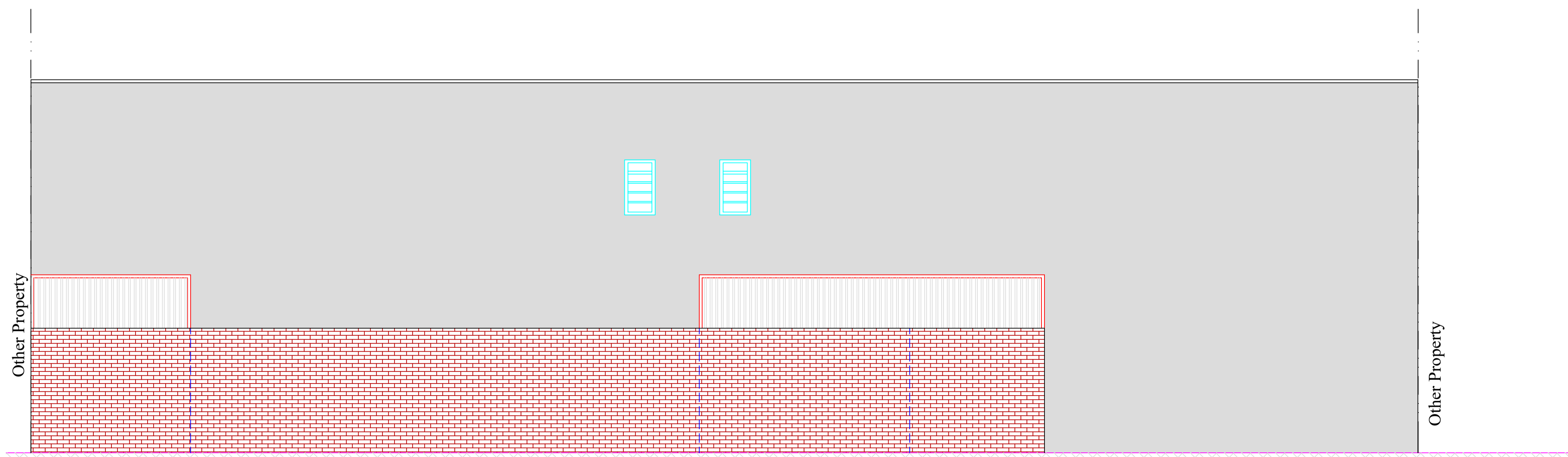
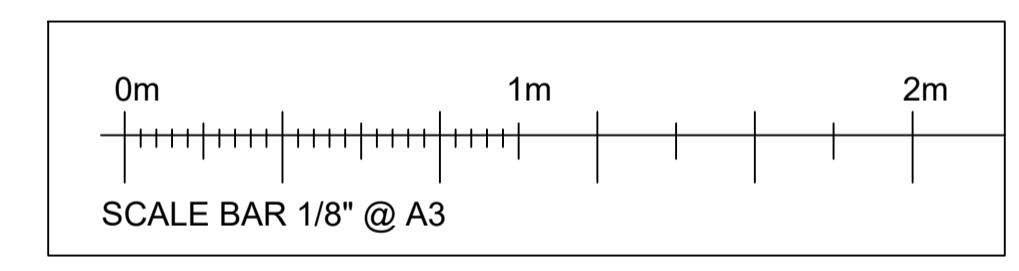
Elevation South - East



Note: For materials and colors, please refer to Photographic report (P150)



Elevation North - East



Elevation South - East

Registered as an architect under the Architect Act 1997



Company n. 11868709 & its office registered in England & Wales
 Don't scale for building control or construction purpose, may be scaled for planning purpose
 Any variation or supplementary drawings are to be approved by the Architect
 Ownership & Copyright of the drawing belongs to ASP Architects london Ltd

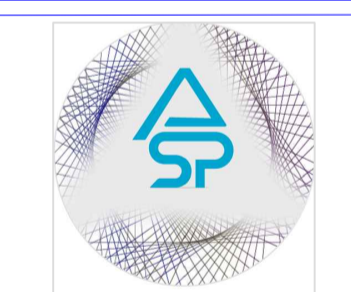
G.I.A Ground Floor = 109.07 m²
 G.I.A First Floor = 91.03 m²

Issue for Prior Approval 06/09/2021 0

Description	Date	Rev.
-------------	------	------

CLIENT
 Newmake Properties Ltd
 245 Whitton Avenue East
 Greenford, UB6 0QQ

LOCAL AUTHORITY
 Camden Council



ASP ARCHITECTS LONDON LTD
 Alshajrawi Sami Projects
 3 Russell Road, Flat n.2
 LONDON W14 8JA - ENGLAND
 E-Mail: info@asparchitects.co.uk
 www.asparchitects.co.uk
 Tel. N.: +44 02030341350

PROJECT:
 Change of Use From B1 to C3
 1-6 Speedy Place, London WC1H 8BU

TITLE:
 Existing Elevations
 North-South / East & West South

Drawn By Sami A.	Checked By ASP	Approved By A.A.
---------------------	-------------------	---------------------

Scale 1/4" (1:40) @A1	Date 06/09/2021
--------------------------	--------------------

Project Code ASP-21105	Drawing No. P101	Revision 0
---------------------------	---------------------	---------------