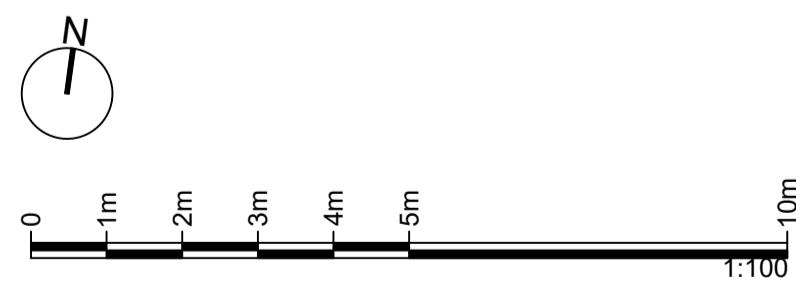


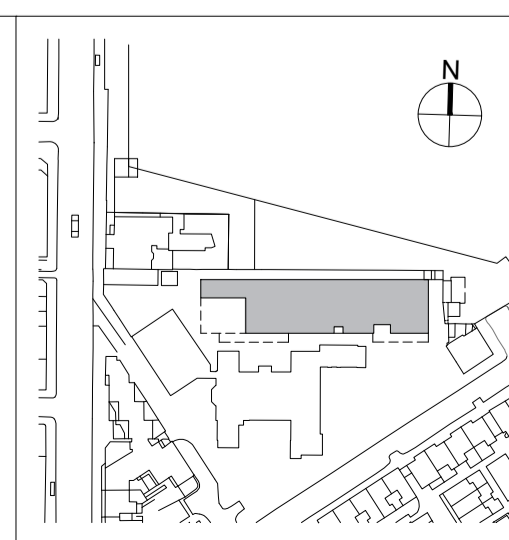
Third Floor Plan  
1:100@A1



					HS2 accepts no responsibility for any circumstances which arise from the reproduction of this document after alteration, amendment or abbreviation or if it is issued in part or issued incompletely in any way.
C02	Internal layout changed Window positions changed Walkway altered	GR	JSN	APB	© Crown Copyright and database right 2020. All rights reserved. Ordnance Survey Licence number 100043190
C01	Contract Issue	GR	JSN	APB	© Crown Copyright material is reproduced with the permission of Land Registry under delegated authority from the Controller of HMSO. This material was last updated on 2020 and may not be copied, distributed, sold or published without the formal permission of Land Registry. Only an official copy of a title plan or register obtained from the Land Registry may be used for legal or other official purposes.
P1.2	General update/ Key plan added	GR	JSN	APB	
P1.1	Initial Issue	GR	JSN	APB	
Rev	Description	Drawn	Checked	Approved	Con App

**Legends/Notes:**  
**NOTE, this floor contains:**  
 BCO - EFFECTIVE DENSITY GUIDELINE: 7m<sup>2</sup> - 13m<sup>2</sup> PER PERSON  
 EFFECTIVE DENSITY AT 100% OCCUPANCY: 8.7m<sup>2</sup> Per Person  
 34.5 Modular Units  
 142 Desks  
 8 Female WC  
 8 Male WC  
 3x 12p Meeting Room  
 1x 18p Meeting Room  
 74 Lockers

- KEY:**
- ◇ ACCESS TO THE BUILDING
  - KITCHEN FOR CANTEN
  - CANTEN
  - OFFICE SPACE
  - ANCILLARY ROOMS
  - WC, SHOWERS, CHANGING ROOMS
  - VERTICAL CIRCULATION
  - TERRACE/ DECK
  - RISER
  - BROWN ROOF / GREEN ROOF
  - CSC



**HS2**  
 OFFICIAL  
 Registered in England  
 Registration No. 06791686  
 Registered office:  
 2 Snow Hill, Queensway,  
 Birmingham, B4 6GA

Project/Contract Proposed Maria Fidelis CSC & Site Accommodation, London. NW1 2HR 1CP01		Creator/Originator MDS		Sub-Originator FBM	
Zone SS08	Work Package Description SL23	Discipline/Function AR		System Description DGA	
Drawing Title Third Floor GA Plan		Drawn by GR	Checked by JSN	Approved by APB	Date 20/09/2021
Scale 1:100	Size A1	Stage 3	Suitability C		
Drawing No. 1CP01-MDS_FBM-AR-DGA-SS08_SL23-F3-000001					Rev. C02