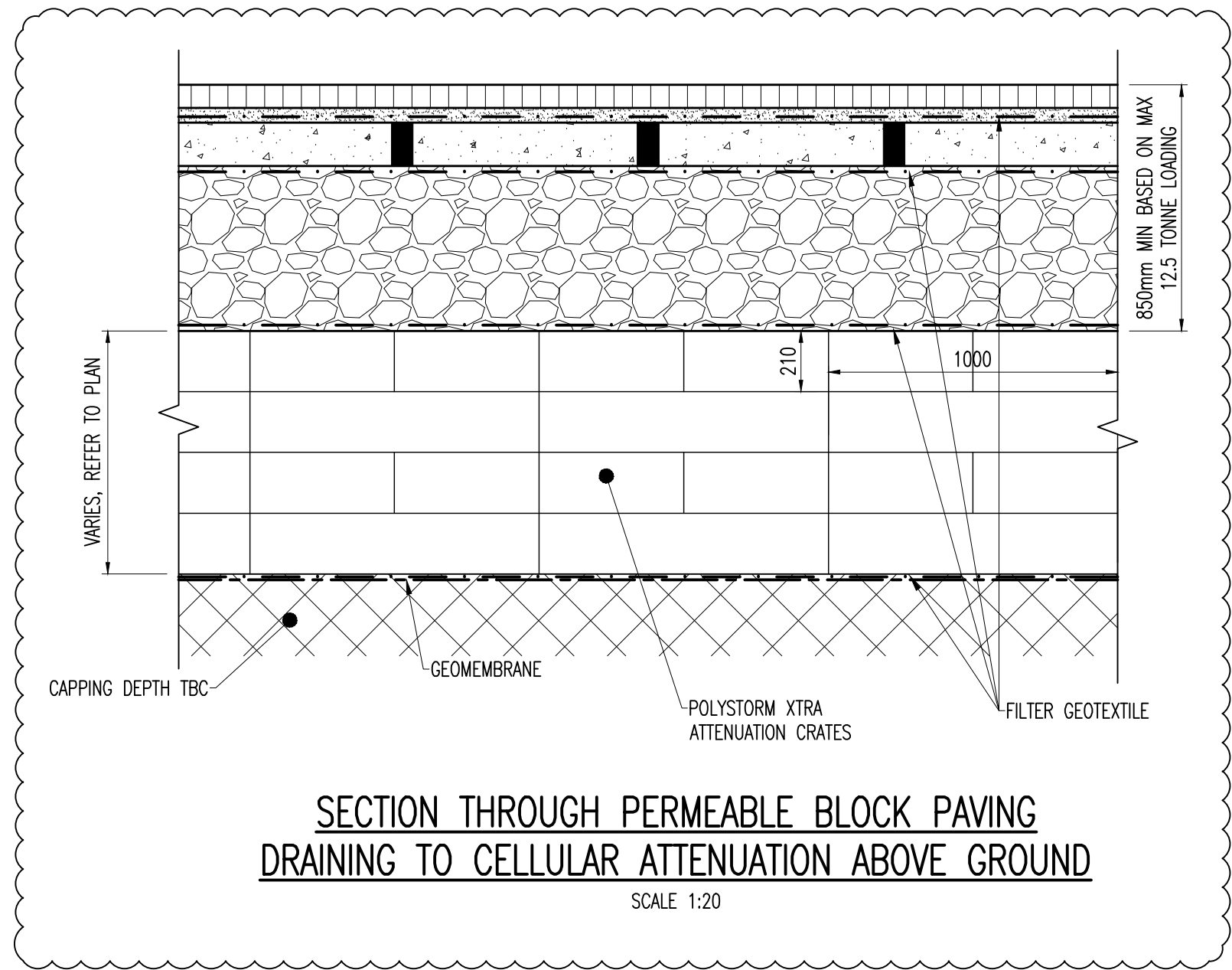


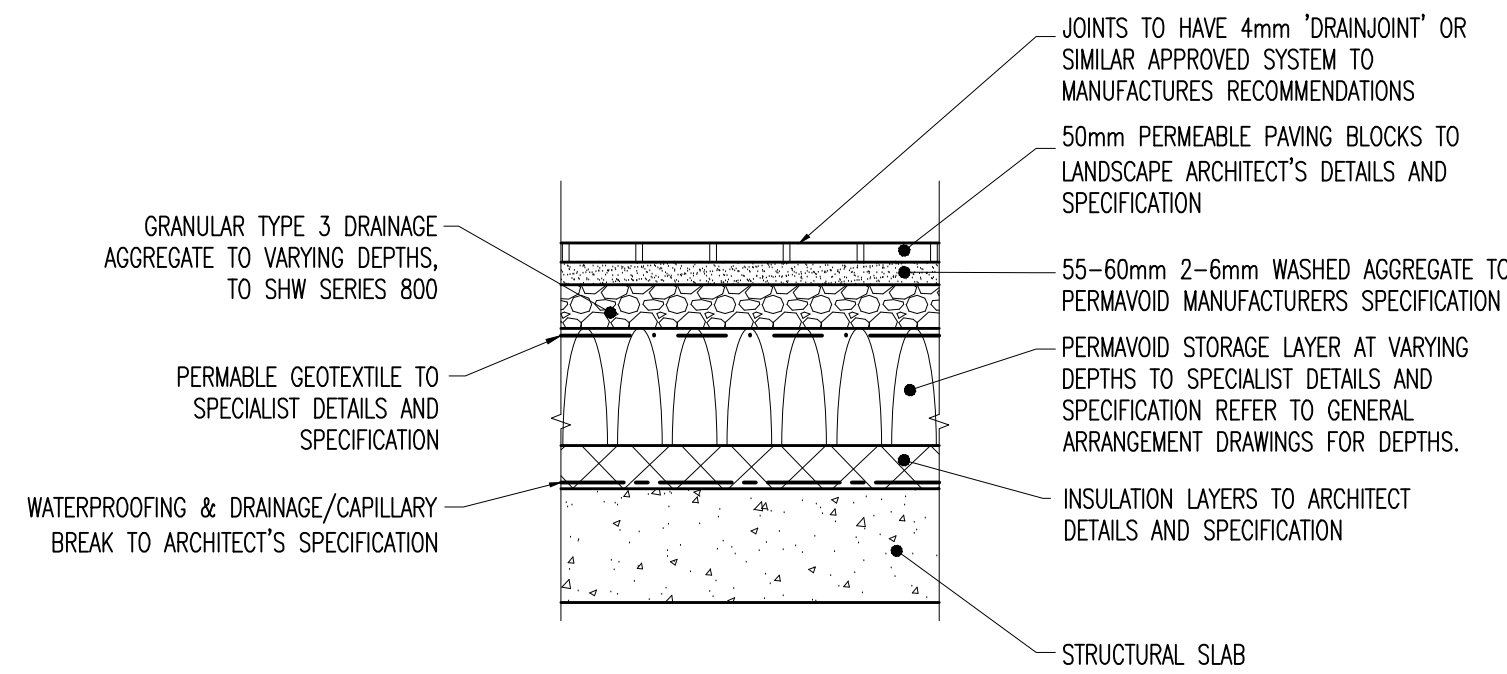
ATTENUATION TANK - CONNECTION ARRANGEMENT TYPE 2 (225Ø PIPE)

SCALE 1:20



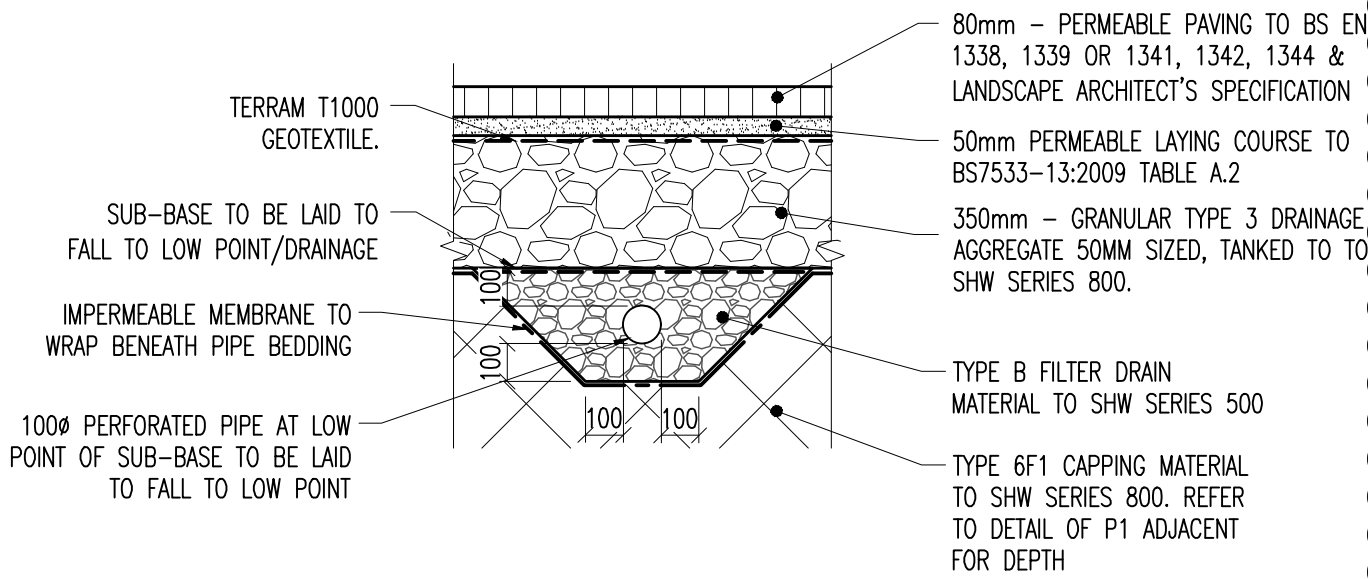
SECTION THROUGH PERMEABLE BLOCK PAVING DRAINING TO CELLULAR ATTENUATION ABOVE GROUND

SCALE 1:20



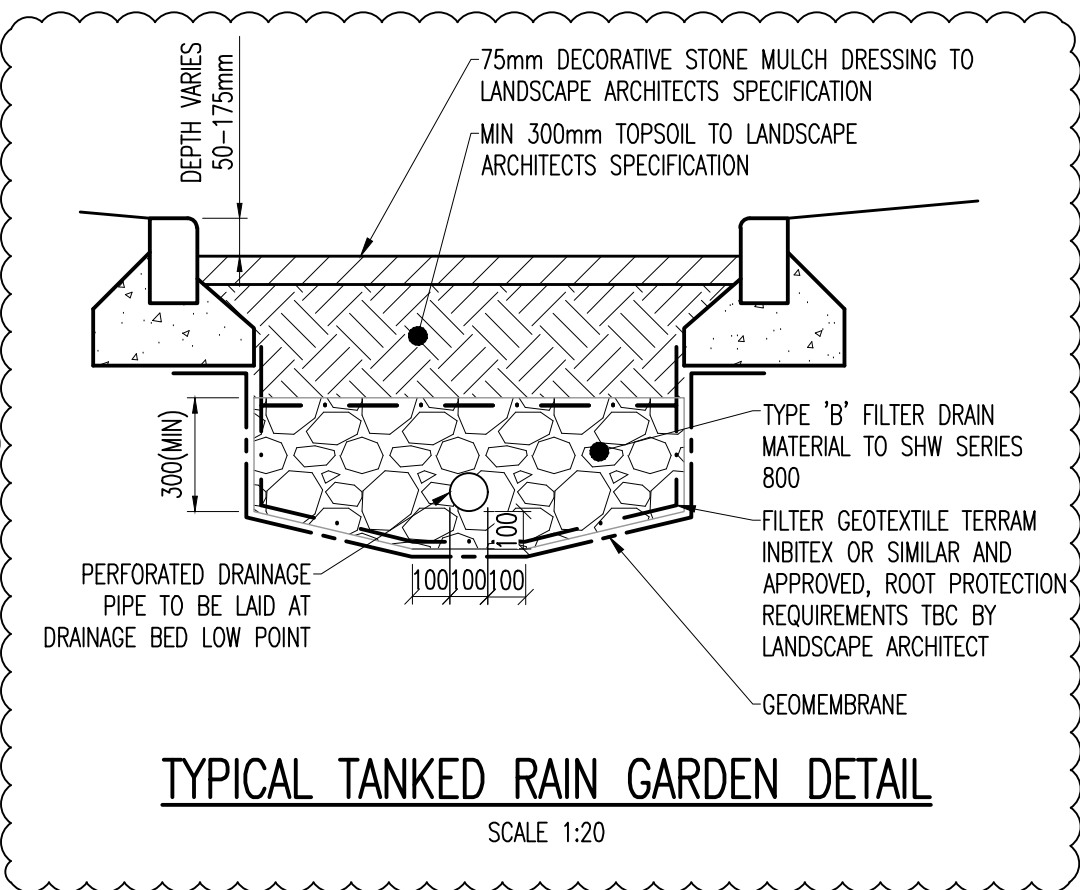
TYPICAL PERMAVOID PEDESTRIANIZED AREAS/FOOTWAYS ABOVE PODIUM SLAB

(FOR PEDESTRIAN LOADING ONLY)
SCALE 1:20



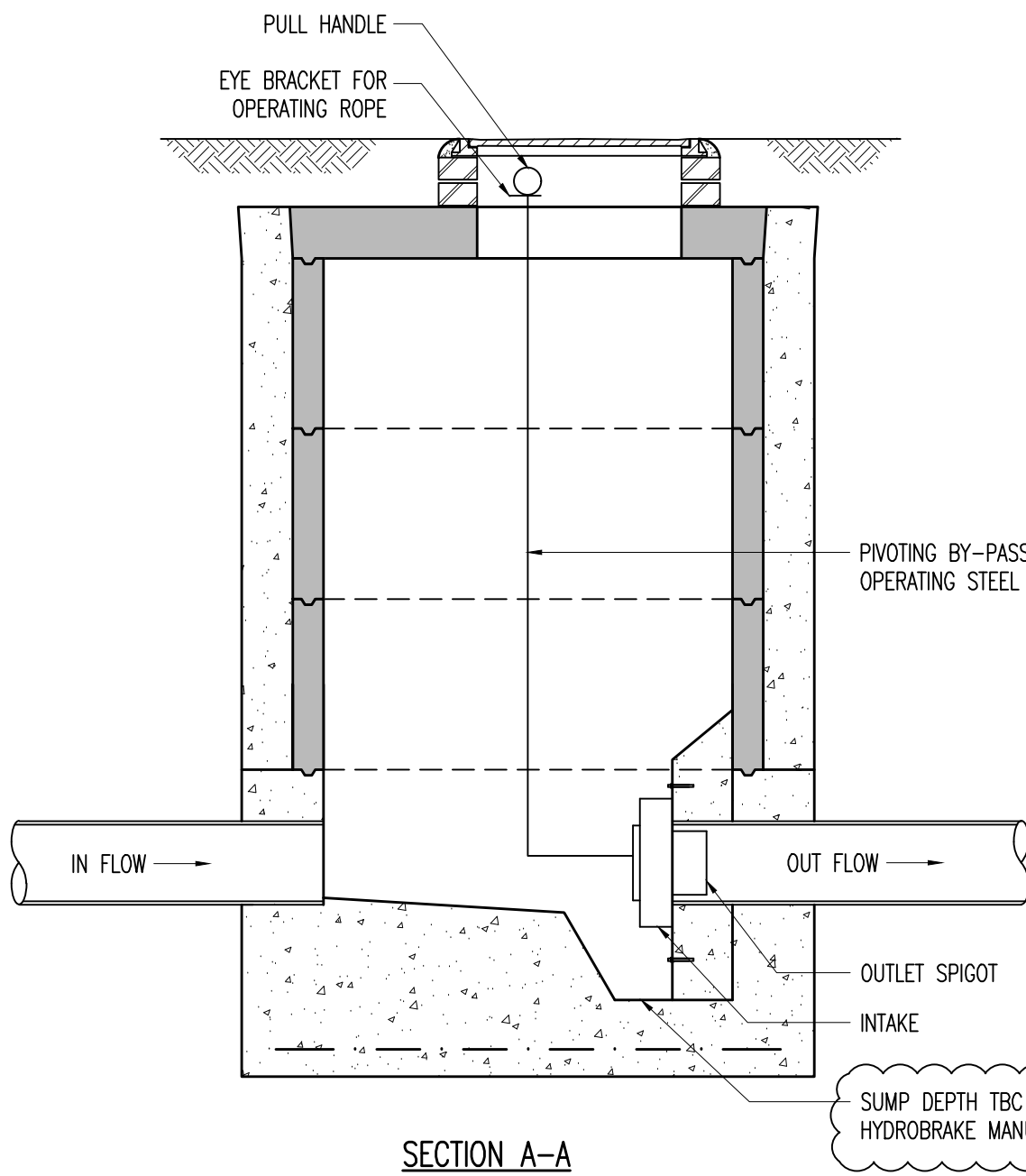
TYPICAL TANKED PERMEABLE PAVING WITH UNDERLAIN FILTER DRAIN

SCALE 1:20



TYPICAL TANKED RAIN GARDEN DETAIL

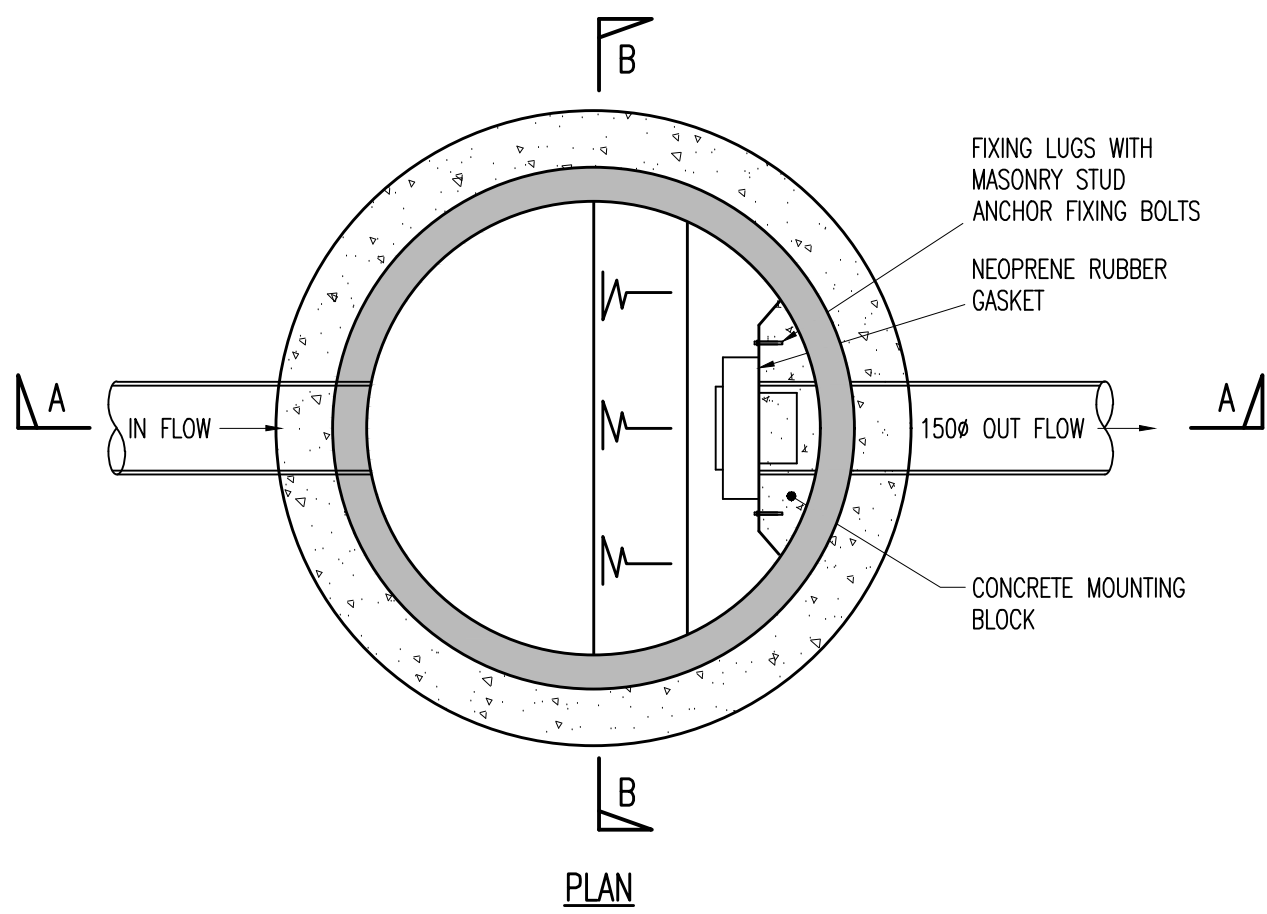
SCALE 1:20



SECTION A-A

DETAIL OF FLOW CONTROL MANHOLE

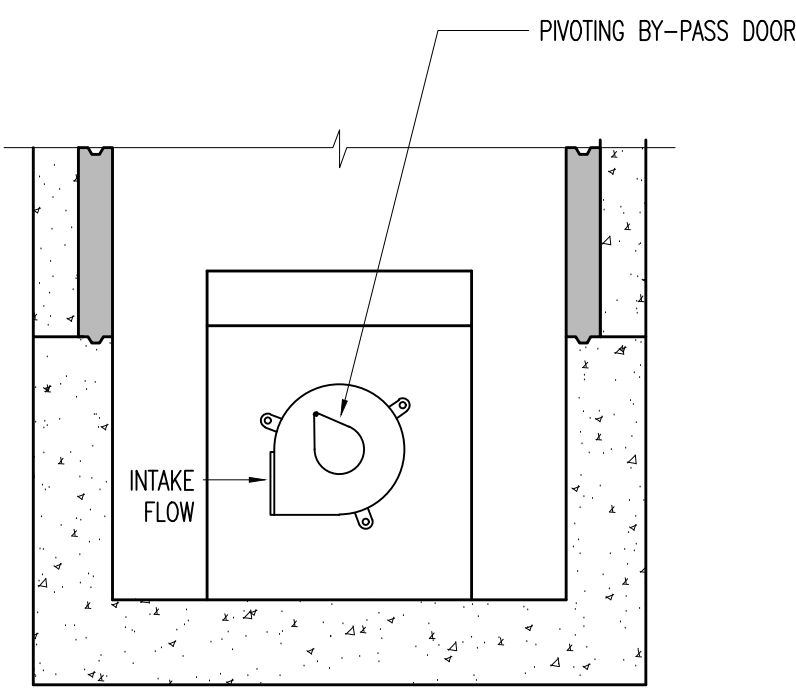
SCALE 1:20



PLAN

GENERAL MANHOLE CONSTRUCTION TO BE AS MANHOLE TYPE B ON DRAWING CGY00-WAL-XXX-ZZ-DR-CV-3201

NB: TYPICAL HYDROBRAKE FLOW CONTROL DETAILS SHOWN. DETAILED INFORMATION TO BE PROVIDED BY MANUFACTURER



SECTION B-B

| Notes |
|---|
| NOTES: 1. ALL DIMENSIONS ARE IN MILLIMETRES AND LEVELS IN METRES. 2. THIS DRAWING TO BE READ IN CONJUNCTION WITH RELEVANT ARCHITECT'S AND ENGINEER'S DRAWINGS AND SPECIFICATIONS. 3. THIS DRAWING HAS BEEN PRODUCED ELECTRONICALLY AND MAY HAVE BEEN PHOTO REDUCED OR ENLARGED WHEN COPIED. HENCE, DO NOT RELY ON ANY SCALES QUOTED. WORK ONLY TO FIGURED DIMENSIONS (DO NOT SCALE). ALL DIMENSIONS TO BE CHECKED ON SITE. ANY ERRORS OR OMISSIONS TO BE REPORTED TO THE ENGINEER IMMEDIATELY. 4. ALL DETAILS TYPICAL ONLY. REFER TO MANUFACTURER'S INFORMATION FOR INSTALLATION DETAILS. 5. FOLLOWING INSTALLATION OF ATTENUATION TANK, CONTRACTOR TO ENSURE ATTENUATION TANKS RECEIVE SUFFICIENT COVER PRIOR TO ANY LOADING WITH CONSTRUCTION VEHICLES OR PLANT. |
| C.D.M. |
| SIGNIFICANT RISKS AND HAZARDS: |
| KEY DESIGN DECISIONS TO REDUCE OR ELIMINATE HAZARDS: |

| | | | |
|--|----------|--------------|-----------------------|
| P02 | 21.06.21 | HTW | REVISED WHERE CLOUDED |
| P01 | 15.03.21 | MDL | FIRST ISSUE |
| Rev | Date | By | Details Of Revision |
| Client | | | |
| ST. GEORGE WEST LONDON | | | |
| Project | | | |
| CAMDEN GOODS YARD (PHASE 2) | | | |
| Title | | | |
| FLOW CONTROL AND ATTENUATION TANK DETAILS SHEET 1 OF 2 | | | |
| Status | | | |
| PRELIMINARY | | | |
| Drawn | MDL | A1 Scales | AS SHOWN |
| Date | 10.03.21 | Eng. | HW |
| WA Ref | 5359 | Chk. | HW |
| | | App'd. | |
| | | Suitability. | |
| Drawing No. | | | |
| CGY00-WAL-XXX-ZZ-DR-CV-3203 | | | P02 |