

Proposed Back Garden Plan

**Outline Specification Notes**

**General**  
 Plant material all plants shall conform to the relevant british standards: BS 3936 and BS 5326. All plants shall be true to form, type, size, healthy, vigorous, pest and weed free. No substitutes in size or type shall be made without written consent of the landscape architect.

**Tree planting (refer to detail)**

Trees shall be planted into prepared pits 900 x 900 x 750mm to the positions shown on the layout drawing. Break up the bases of all pits to a further depth of 150mm and ensure that the sides of the pits are not glazed. Backfill with imported topsoil and mix with an approved tree planting compost. Allow for 2no. peeled and treated tree stakes, 1.8m long overall with a mean top diameter of 65mm to be used to secure each tree with 2no. 600mm rubber ties at a height of 600mm above ground level. Ensure that the trees are finished at their original soil level. Water-in thoroughly immediately after planting. Allow for amendment to the fertilizer specification, as indicated by the topsoil analysis. All trees planted into new/existing grass shall have a 1.0m clear area around the base of the trunk, covered with 50mm composted bark mulch which shall be kept weed free throughout the maintenance period.

**Shrub Planting**

Shrubs shall be planted into 450mm of topsoil. Apply a slow release fertilizer such as Enmag at 70g/sq.m or similar approved and work into the topsoil. Plant material shall be planted into pits 75mm wider than the root spread. The pits shall be backfilled gently, firming-in around the roots, ensuring that all plants are finished at their original soil levels. All plants shall be watered-in thoroughly, immediately after planting. Allow for an amendment to the fertilizer specification as indicated by the topsoil analysis. Shrub beds shall be mulched with a minimum 50mm layer of composted bark, with the depth topped up at end of maintenance period.

- All reused existing or imported topsoil shall be tested by approved Topsoil Analyst to conform to BS 3882:2007 'Specification for Topsoil and Requirements for Use'. Any required amelioration or soil improvement to be carried out in line with Analyst's report.  
 - Topsoil storage mounds shall be in accordance with NBS landscape specification - locations are to be confirmed with Contractor.

- All fertilizers are to be applied or supervised by qualified staff to avoid the action of plasmolysis.

**Maintenance Notes - Overview**

All landscaped areas are to be maintained for 24 months following practical completion of the phase or until the plants have established, all tree planting to be maintained for 36 months.

Planting to be protected from mammal and human damage by stock proof fencing.  
 All planted areas to be kept clear of weeds at all times throughout maintenance period.  
 Planted areas to be forked through regularly to keep soil loose and aerated.  
 All litter and debris to be removed from landscaped areas and carted off site.  
 Plants pruned as instructed by the Landscape Architect to promote healthy growth and to remove dead and diseased wood.  
 Watering as required to maintain healthy growth. (allow for 12No. watering minimum).  
 Any species that dies or fails to establish in the first five years should be replaced by an identical species, or alternative species as agreed otherwise.

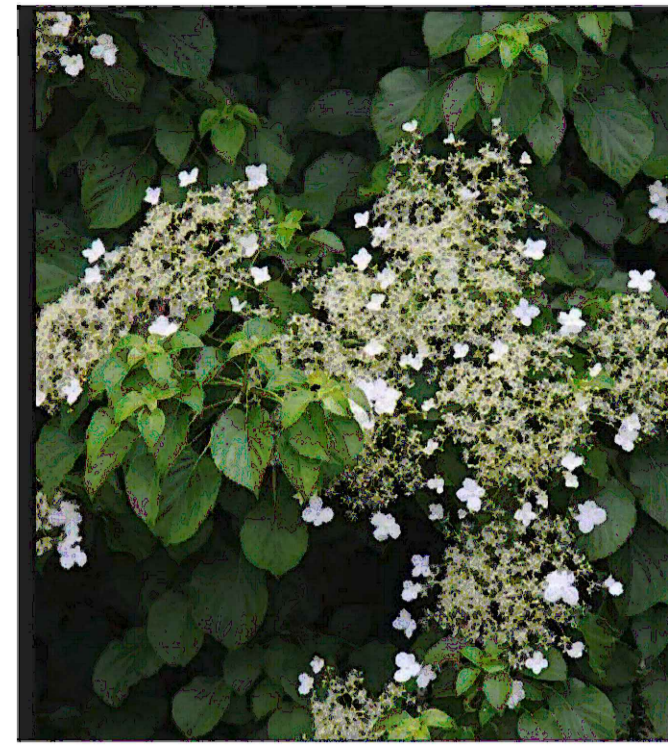
**KEY**

- Existing trees / vegetation
- Proposed lawn area
- Proposed Ilex aquifolium
- Proposed trellis on top of existing wall planted with climbers for privacy
- Proposed low clipped Ilex Crenata hedge
- Proposed mixed border
- Proposed permeable path gravel
- Proposed clipped yew hedge
- Proposed Arbutus unedo
- Proposed grass and wild flower planting
- Proposed sand stone paving with permeable joints

**SPECIFICATION**  
 All planting stock and trees should comply & be carried out in accordance to the following:  
 • Forestry Commission Practice note 8.  
 • Native species from local stock.  
 • Native trees and shrubs certified as British Native plant stock.  
 • Horticultural Trade Association National Plant specification.  
 • Planting preparation, handling, planting & maintenance to the CPSE Code for Handling and Establishing plants.  
 • BS 3936 Part 1 1992.  
 • Planted to BS 4428:1989.  
 • Imported topsoil to be mounded towards the centre of each bed to allow for settlement.  
 • On completion of planting, shrub beds mulched with 75mm consolidated thickness of medium textured decorative grade natural pine bark (see accompanying notes for preparation details).  
 • Existing trees and hedges to be protected in accordance with BS5837:2005 for the duration of the construction period.  
 • Tree distances to be in accordance with engineers specification.  
 For more details on the spec see the accompanying notes.

**Landmark Trees**  
 Holden House, 4th Floor, 57 Rathbone Place, London, W1T 1JU  
 Tel: 0207 851 4544 Mobile: 07812 989928  
 e-mail: info@landmarktrees.co.uk Web: www.landmarktrees.co.uk

Site: 31 Elsworth  
 Drawing Title: Landscape Plan  
 1:50 @ A1  
 March 2021



Hydrangea petiolaris



Arbutus unedo



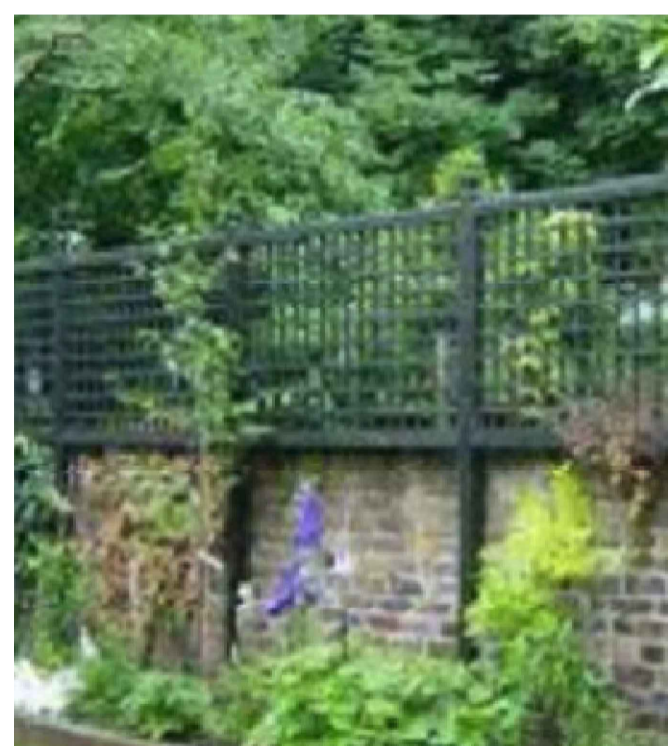
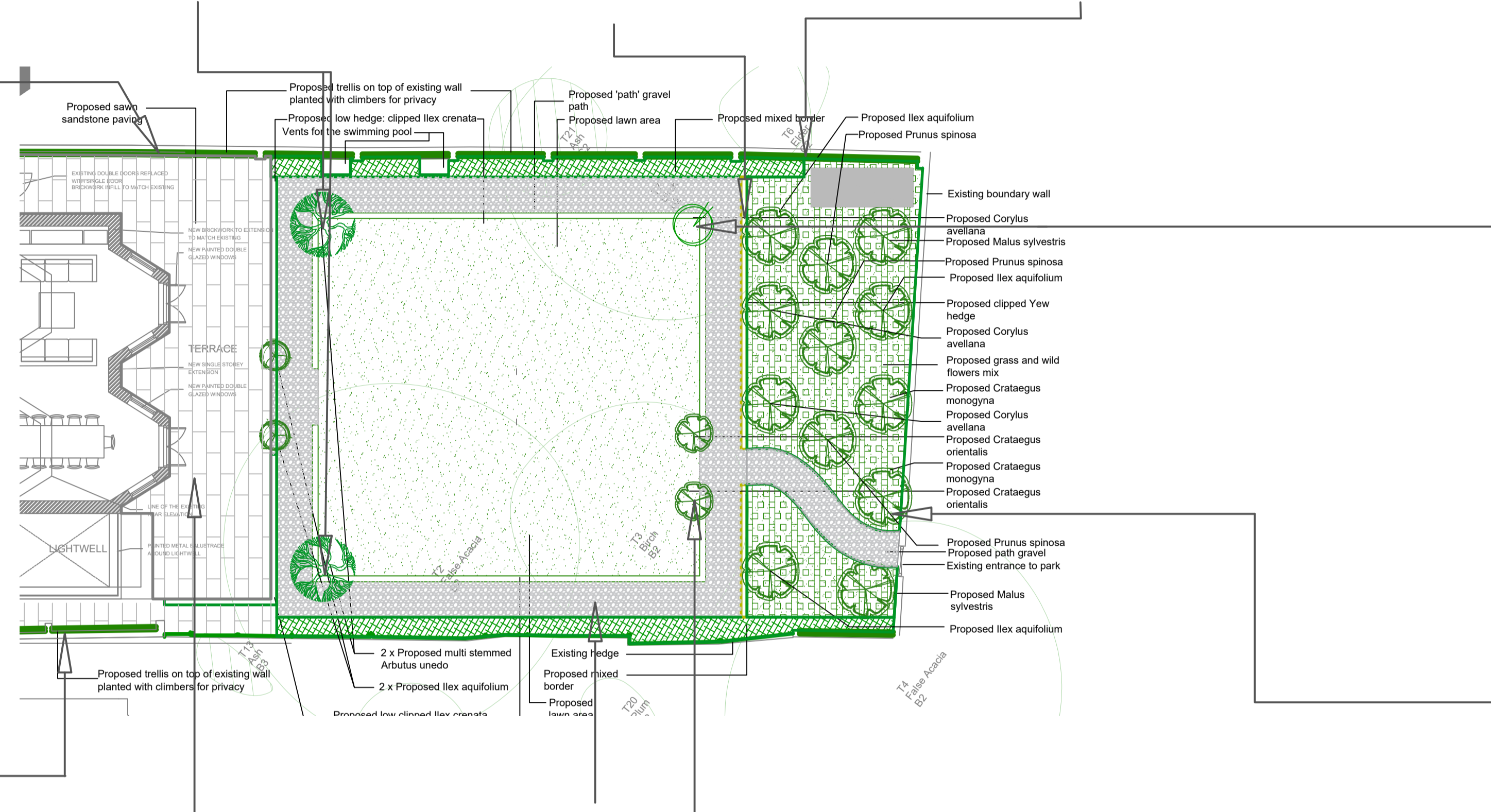
Yew hedge



Euphorbia to Euphorbia characins subspecies. wulfenii



Corylus avellana



Trellis



Grey sawn sand stone paving



Tumbled granite setts bordering the gravel



Crataegus orientalis



Cornus sanguinea

	Number	Density	Height	Girth	Pot Size
<b>Statement Trees</b>					
Arbutus unedo	2		3m		290lt
<b>Woodland trees</b>					
Corylus avellana	3		1-5/ 2		40lt
Crataegus orientalis	2		1-5/ 2		40lt
Crataegus monogyna	2		1-5/ 2		40lt
Ilex aquifolium	6		1-5/ 2		40lt
Malus sylvestris	2		1-5/ 2		40lt
Prunus spinosa	2		1-5/ 2		40lt
Woodland 80/20 grass/wildflower mix	30 sq.m.	30g/ sq.m.			
<b>Mixed scented border</b>					
Planted toward the back of the border					
<b>Shrubs</b>					
Philadelphus coronarius	3	1/m <sup>2</sup>			3lt
Syringa vulgaris	3	1/m <sup>2</sup>			3lt
Chimonanthus praecox	3	1/m <sup>2</sup>			3lt
Lonicera fragrantissima	3	1/m <sup>2</sup>			3lt
Lavandula angustifera little lady	3	1/m <sup>2</sup>			
<b>Perennials</b>					
Euphorbia to Euphorbia characins subspecies. wulfenii	12	3/m <sup>2</sup>			2lt
Geranium 'Ann Folkard'	12	3/m <sup>2</sup>			2lt
Digitalis purpurea	12	3/m <sup>2</sup>			2lt
Lunaria annua	12	3/m <sup>2</sup>			2lt
Iris pallida	12	3/m <sup>2</sup>			2lt
Achillea millefolium	12	3/m <sup>2</sup>			2lt
<b>Bulbs</b>					
Fritillaria imperialis	30	1/m <sup>2</sup>			
Tulip 'White Triumphater'	30	1/m <sup>2</sup>			
<b>Low Clipped Hedge</b>					
Taxus baccata	45	3/m	1-2		15lt
Ilex crenata	225	3/m			2lt

**SPECIFICATION**  
 All planting stock and trees should comply & be carried out in accordance to the following:

- Forestry Commission Practice note 8.
- Native species from local stock.
- Native trees and shrubs certified as British Native plant stock.
- Horticultural Trade Association National Plant specification.
- Planting preparation, handling, planting & maintenance to the CPSE Code for Handling and Establishing plants.
- BS 3936 Part 1 1992.
- Planted to BS 4428:1989.
- Imported topsoil to be mounded towards the centre of each bed to allow for settlement.
- On completion of planting, shrub beds mulched with 75mm consolidated thickness of medium textured decorative grade natural pine bark (see accompanying notes for preparation details).
- Existing trees and hedges to be protected in accordance with BS5837:2005 for the duration of the construction period.
- Tree distances to be in accordance with engineers specification.

For more details on the spec see the accompanying notes.

**Landmark Trees**  
 Holden House, 4th Floor, 57 Rathbone Place, London, W1T 1JU  
 Tel: 0207 851 4544 Mobile: 07812 989928  
 e-mail: info@landmarktrees.co.uk Web: www.landmarktrees.co.uk